

DGHDP STANDARD COMPONENTS

Room Layout Sheet

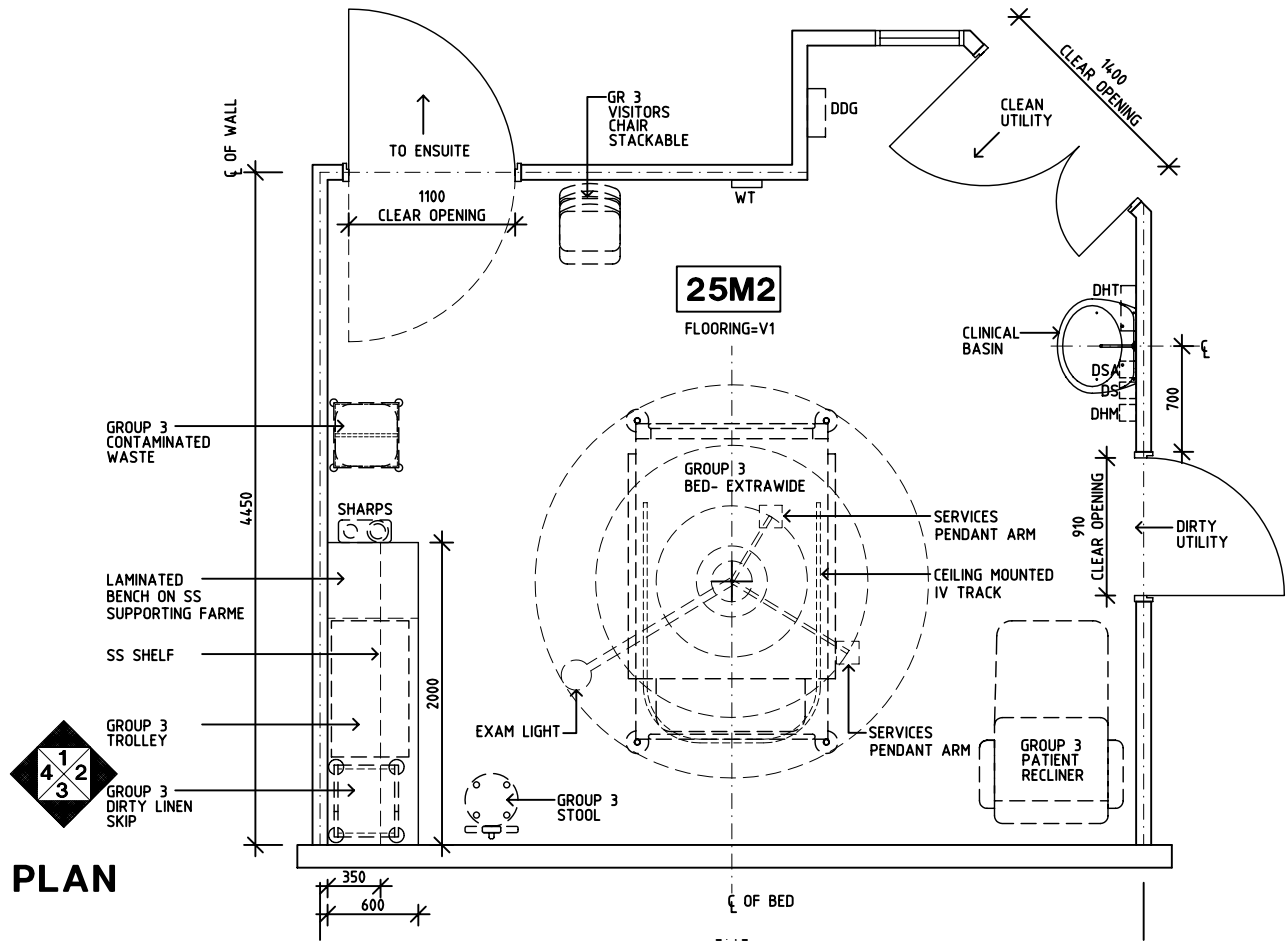
Department **Ultra Isolation Facility**

Room Name **Patient Bed Room**

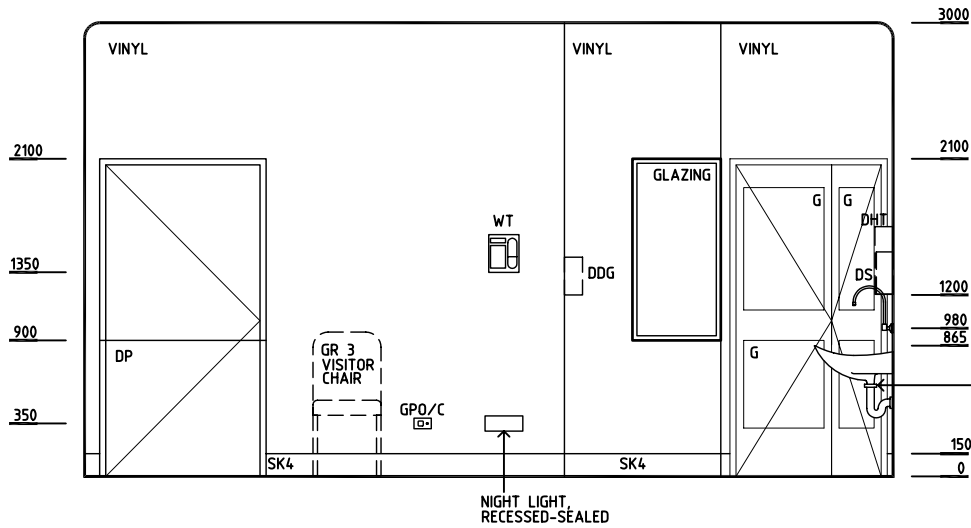
ID No **UIF-BR**

- COM/2 COMMUNICATION OUTLET, DOUBLE
- COH COAT HOOK
- CW COLD WATER OUTLET - FILTERED
- DDG DISPENSER - DISPOSABLE GLOVES
- DHT DISPENSER - HAND TOWEL
- DHM DISPENSER - HAND MOISTURER
- DS DISPENSER - SOAP
- DSA DISPENSER - SOAP ANTISEPTIC
- DP DOOR AND FRAME PROTECTION
- G GLAZING
- GPO/1 GENERAL PURPOSE OUTLET-SINGLE
- GPO/2 GENERAL PURPOSE OUTLET-DOUBLE
- GPO/1EP EMERGENCY POWER - SINGLE
- GPO/2EP EMERGENCY POWER - DOUBLE
- GPO/C GENERAL PURPOSE OUTLET-CLEANER'S
- LS LIGHT SWITCH
- OP OBSERVATION PANEL
- SS STAINLESS STEEL
- SK4 FLOOR VINYL COVERED SKIRTING
- V1 VINYL FLOORING STANDARD
- WT WALL TELEPHONE
- WW WARM WATER OUTLET - FILTERED

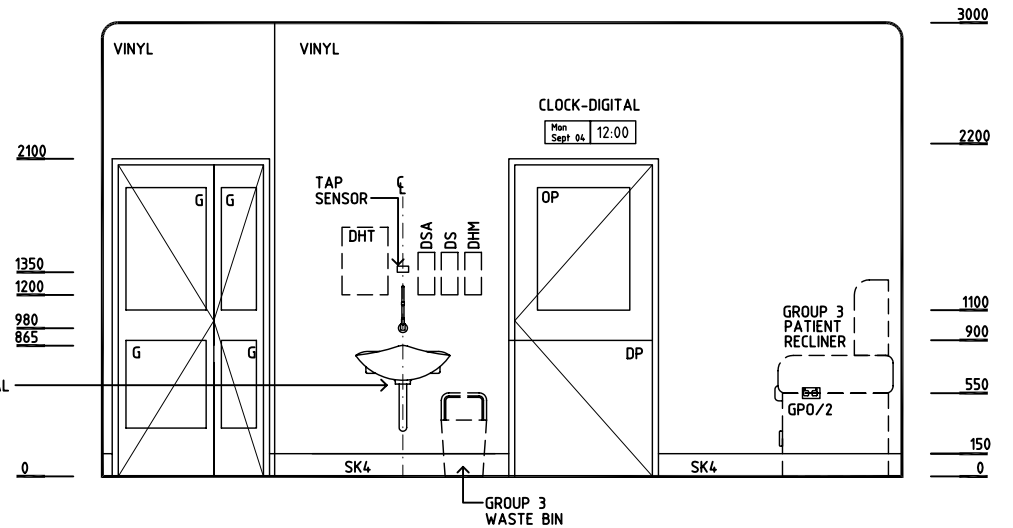
- SERVICE PENDANTS:
- 1 x EMERGENCY CALL
 - 1 x NURSE ASSIST
 - 1 x NURSE CALL & HANDSET
 - 12 x GPO/1
 - 12 x GPO/1 EP
 - 2 x GPO/1-UPS
 - 4 x OXYGEN
 - 2 x MEDICAL AIR
 - 4 x SUCTION
 - 2 x SCAVENGE (OPTIONAL)
 - 1 x MONITOR CONNECTION
 - 2 x DATA POINT, DOUBLE



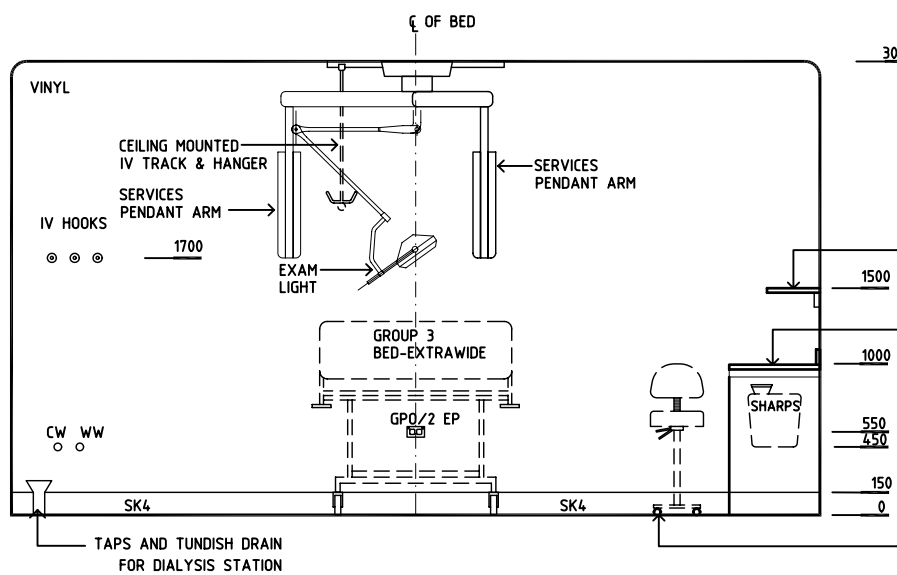
PLAN



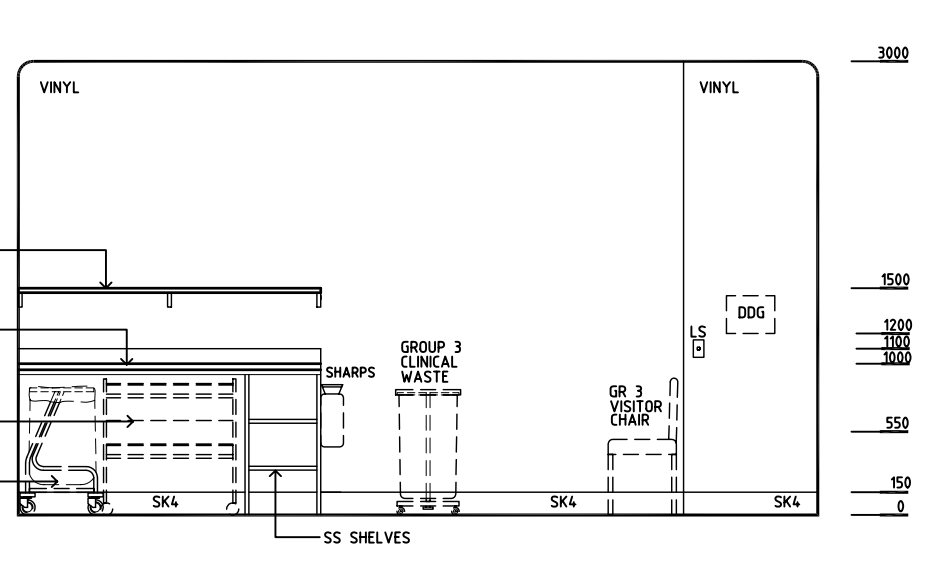
ELEVATION 1



ELEVATION 2



ELEVATION 3



ELEVATION 4

Rev	Revision Description	Date	Rev	Revision Description	Date	Rev	Revision Description	Date
1	FIRST ISSUE	27.9.04						
2	DRAWING REVISED	22.10.04						