

DGHDP STANDARD COMPONENTS

Room Layout Sheet

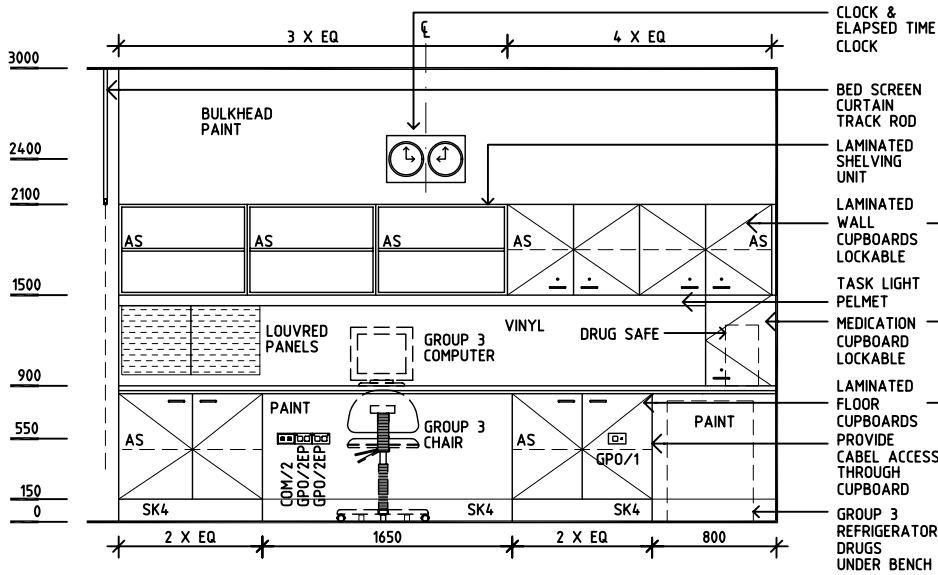
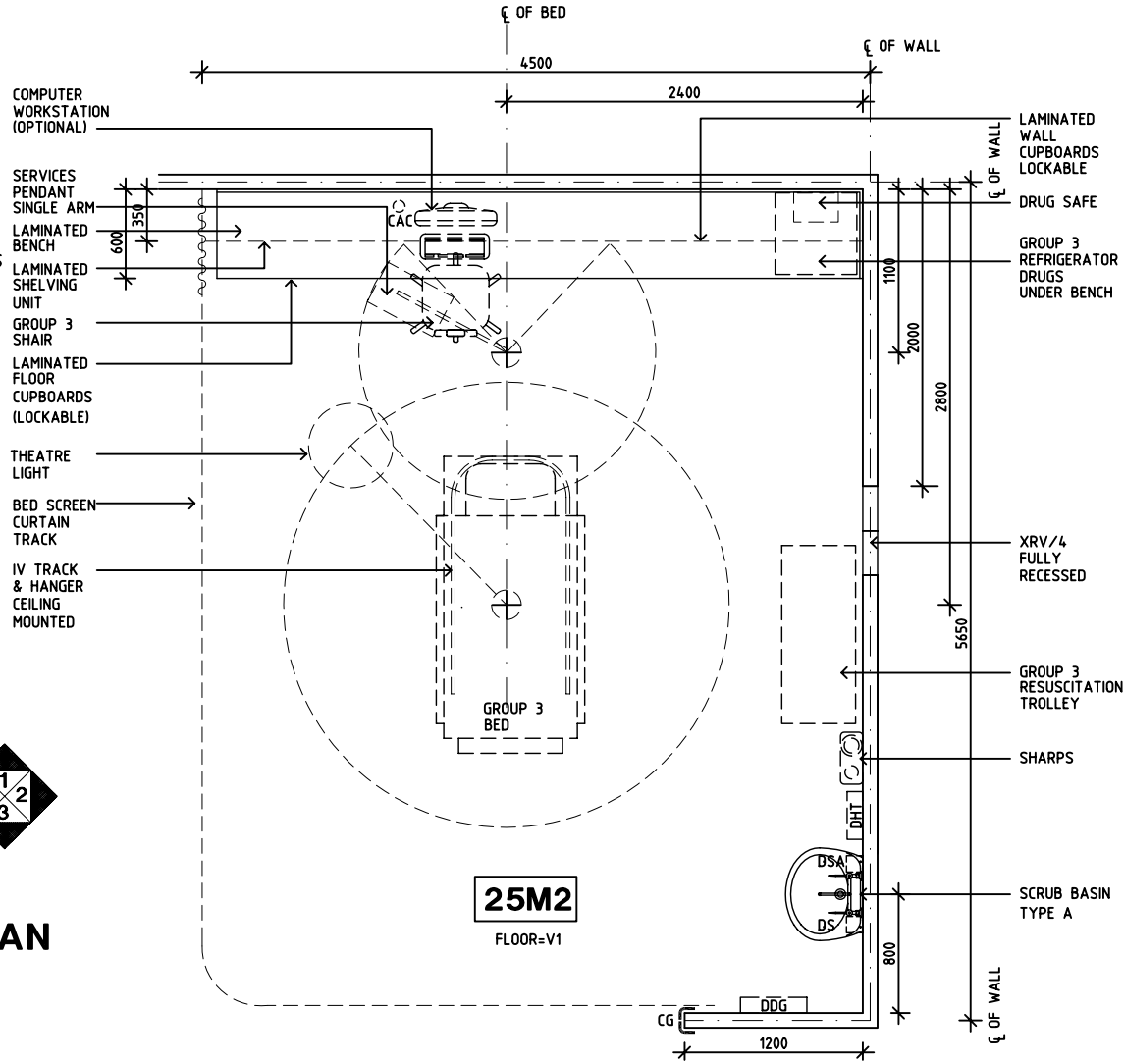
Room Name **Patient Bay - Critical**

ID No **PBTR-C**

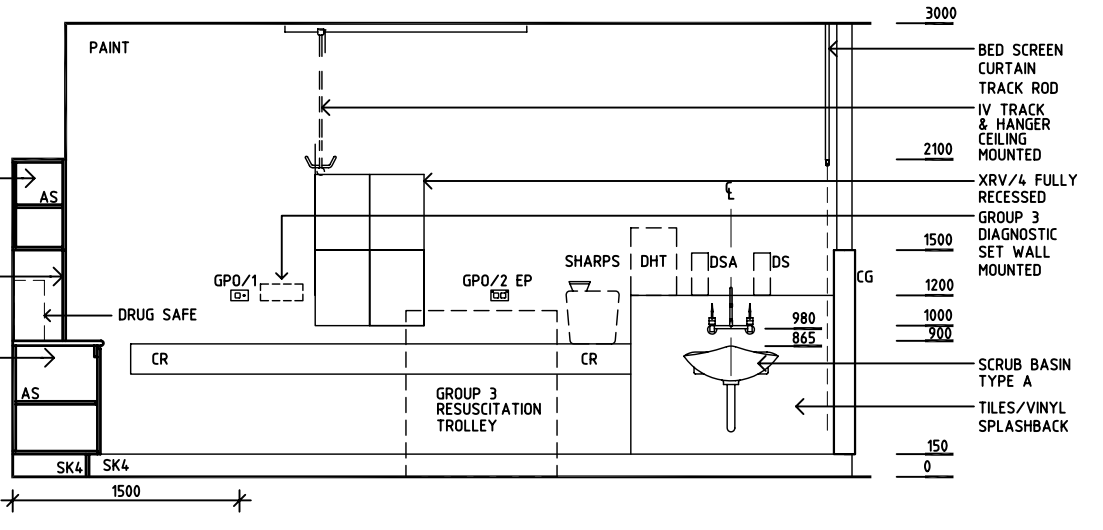
- AS ADJUSTABLE SHELF
 - CAC CABLE ACCESS CAP
 - CG CORNER GUARD
 - CR CRASH RAIL
 - COM/2 COMMUNICATION OUTLET - DOUBLE
 - DDG DISPENSER - DISPOSABLE GLOVES
 - DHT DISPENSER - HAND TOWEL
 - DS DISPENSER - SOAP
 - DSA DISPENSER - SOAP ANTISEPTIC
 - GPO/1 GENERAL PURPOSE OUTLET - SINGLE
 - GPO/2 EP EMERGENCY POWER - DOUBLE
 - GPO/C GENERAL PURPOSE OUTLET - CLEANER'S
 - SK4 FLOOR VINYL COVERED SKIRTING
 - TMV THERMOSTATIC MIXING VALVE
 - V1 VINYL FLOORING, STANDARD
- SERVICE PENDANT:
- 1 x EMERGENCY CALL
 - 1 x NURSE ASSIST
 - 1 x NURSE CALL
 - 16 x GPO- EMERGENCY POWER
 - 4 x OXYGEN
 - 2 x MEDICAL AIR
 - 1 x NITROUS OXIDE (OPTIONAL)
 - 2 x SUCTION
 - 1 x MONITOR CONNECTION (OPTIONAL)
 - 1 x COM/2



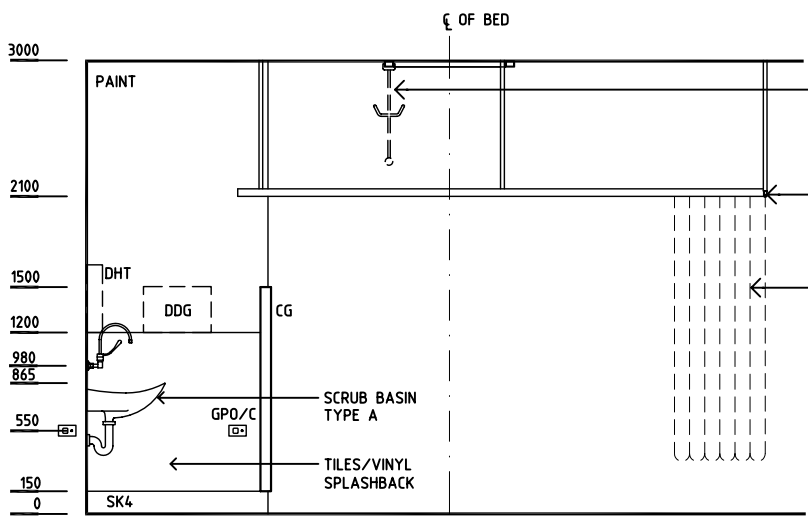
PLAN



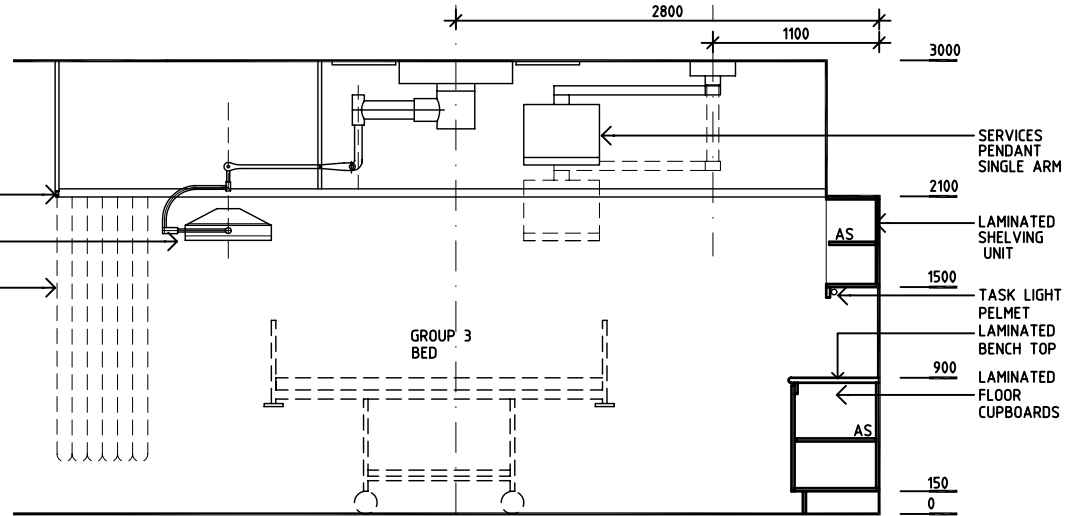
ELEVATION 1



ELEVATION 2



ELEVATION 3



ELEVATION 4

Rev	Revision Description	Date	Rev	Revision Description	Date	Rev	Revision Description	Date
1	FIRST ISSUE	27.9.04						
2	DRAWING REVISED	22.10.04						

<p>HEALTH PROJECTS INTERNATIONAL (c) Ground Floor, Suite 1, 68 Alfred Street, Milsons Point NSW 2061 Ph: (02)9460 4199 www.hpi.net.au ACN: 066 856 595</p>	<p>The Department of Human Services, Victoria Design guidelines for hospitals and day procedure centres</p>		Drawn CC	Checked DB	Date 22.10.04	Scale 1:50 in A3	Sheet 1 of 1	
			CAD File		Drawing No.		Issue	
			PBTR-C		PBTR-C		2	