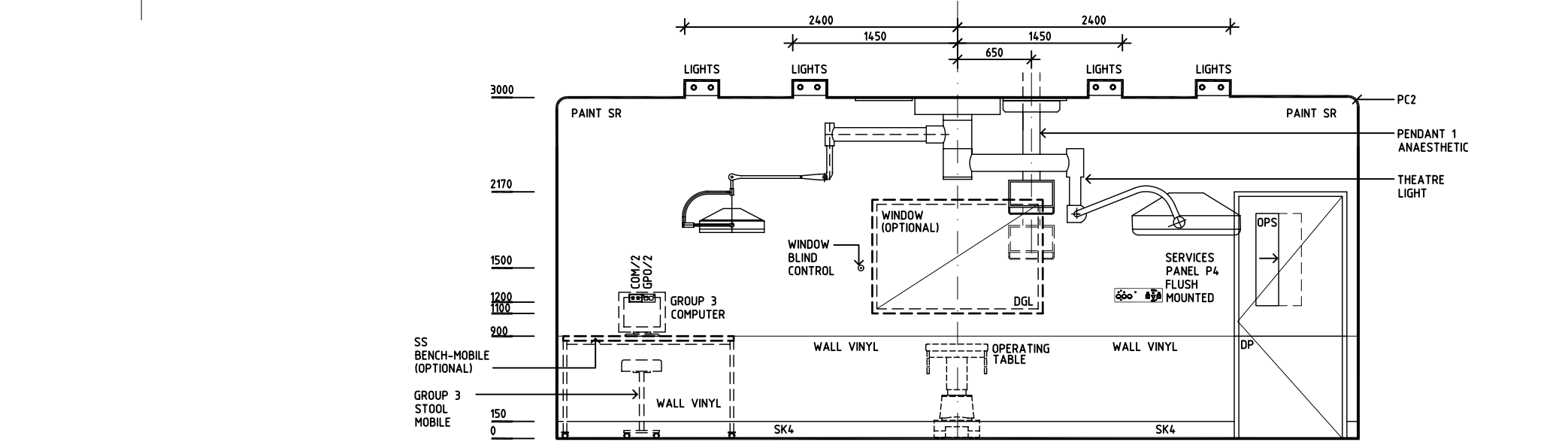
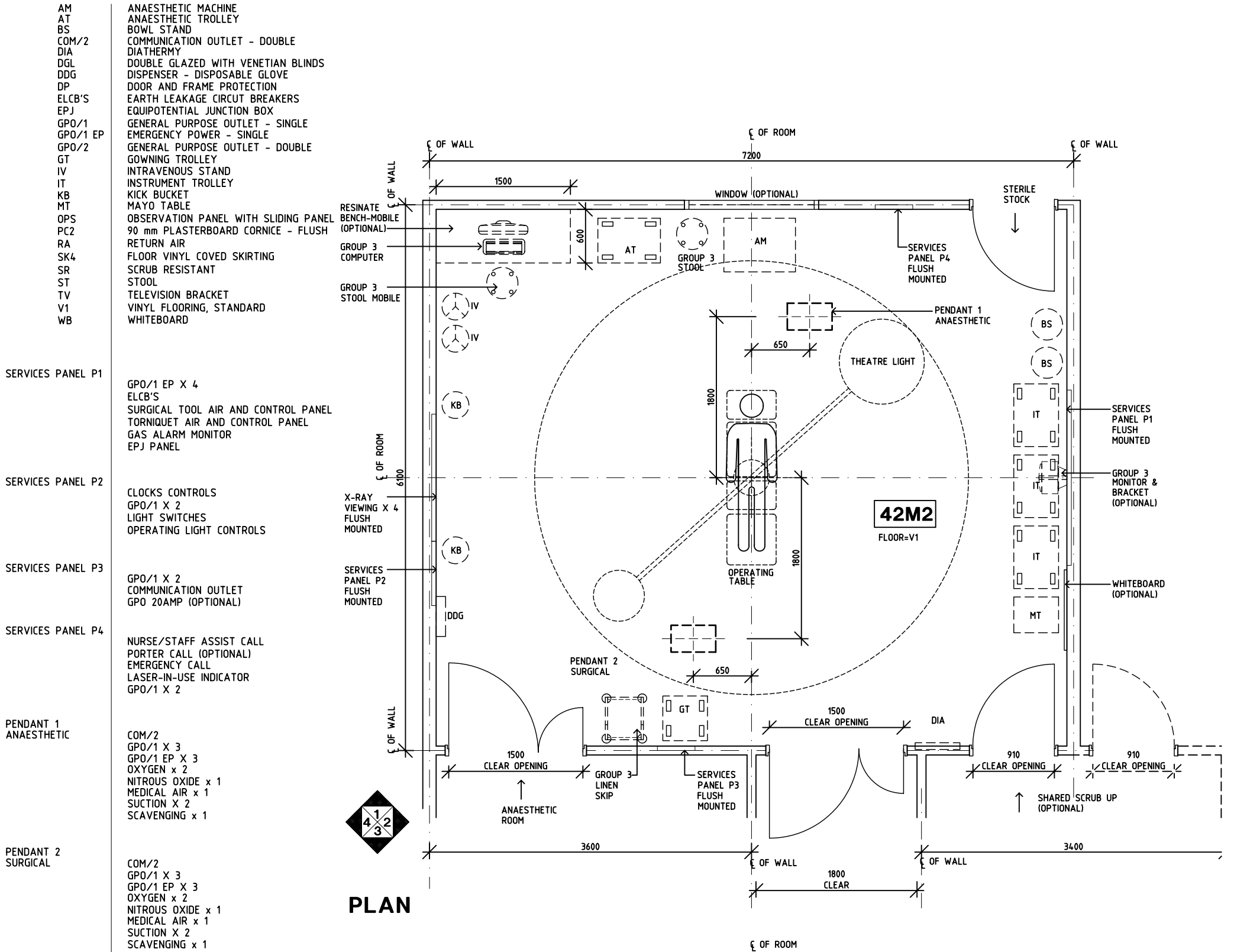


DGHDP STANDARD COMPONENTS

Room Layout Sheet

Room Name **Operating Room - General**

ID No **ORGN**



Rev	Revision Description	Date	Rev	Revision Description	Date	Rev	Revision Description	Date
1	FIRST ISSUE	27.9.04						
2	DRAWING REVISED	25.10.04						

HEALTH PROJECTS INTERNATIONAL (c) Ground Floor, Suite 1, 68 Alfred Street, Milsons Point NSW 2061 Ph: (02)9460 4199 www.hpi.net.au ACN: 066 856 595	The Department of Human Services, Victoria Design guidelines for hospitals and day procedure centres	The Place To Be	Drawn	Checked	Date	Scale	Sheet
			CC	DB	25.10.04	1:50 in A3	1 of 2
			CAD File		Drawing No.		Issue
			ORGN		ORGNa		2

DGHDP STANDARD COMPONENTS

Room Layout Sheet

Room Name **Operating Room - General**

ID No **ORGN**

- AM ANAESTHETIC MACHINE
- AT ANAESTHETIC TROLLEY
- BS BOWL STAND
- COM/2 COMMUNICATION OUTLET - DOUBLE
- DIA DIATHERMY
- DGL DOUBLE GLAZED WITH VENETIAN BLINDS
- DDG DISPENSER - DISPOSABLE GLOVE
- DP DOOR AND FRAME PROTECTION
- ELCB'S EARTH LEAKAGE CIRCUIT BREAKERS
- EPJ EQUIPOTENTIAL JUNCTION BOX
- GPO/1 GENERAL PURPOSE OUTLET - SINGLE
- GPO/1 EP EMERGENCY POWER - SINGLE
- GPO/2 GENERAL PURPOSE OUTLET - DOUBLE
- GPO/C GENERAL PURPOSE OUTLET - CLEANER'S
- GT GOWNING TROLLEY
- IV INTRAVENOUS STAND
- IT INSTRUMENT TROLLEY
- KB KICK BUCKET
- MT MAYO TABLE
- OPS OBSERVATION PANEL WITH SLIDING PANEL
- PC2 90 mm PLASTERBOARD CORNICE- FLUSH
- RA RETURN AIR
- SK4 FLOOR VINYL COVERED SKIRTING
- SR SCRUB RESISTANT
- ST STOOL
- TV TELEVISION BRACKET
- V1 VINYL FLOORING, STANDARD
- WB WHITEBOARD

- SERVICES PANEL P1
- GPO/1 EP X 4
 - ELCB'S
 - SURGICAL TOOL AIR AND CONTROL PANEL
 - TORNIQUET AIR AND CONTROL PANEL
 - GAS ALARM MONITOR
 - EPJ PANEL

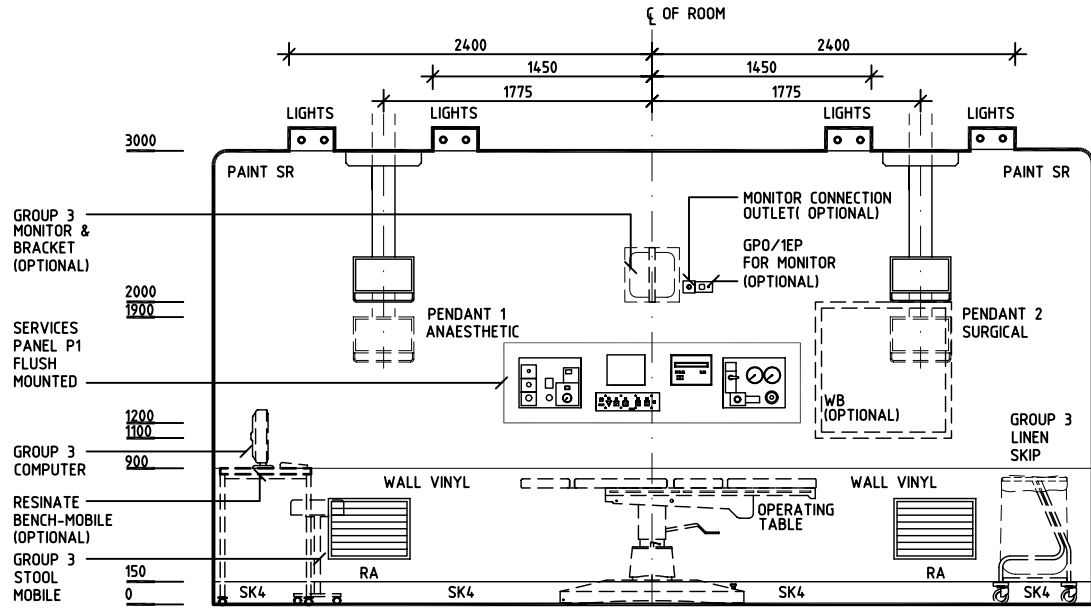
- SERVICES PANEL P2
- CLOCKS CONTROLS
 - GPO/1 X 2
 - LIGHT SWITCHES
 - OPERATING LIGHT CONTROLS

- SERVICES PANEL P3
- GPO/1 X 2
 - COMMUNICATION OUTLET
 - GPO 20AMP (OPTIONAL)

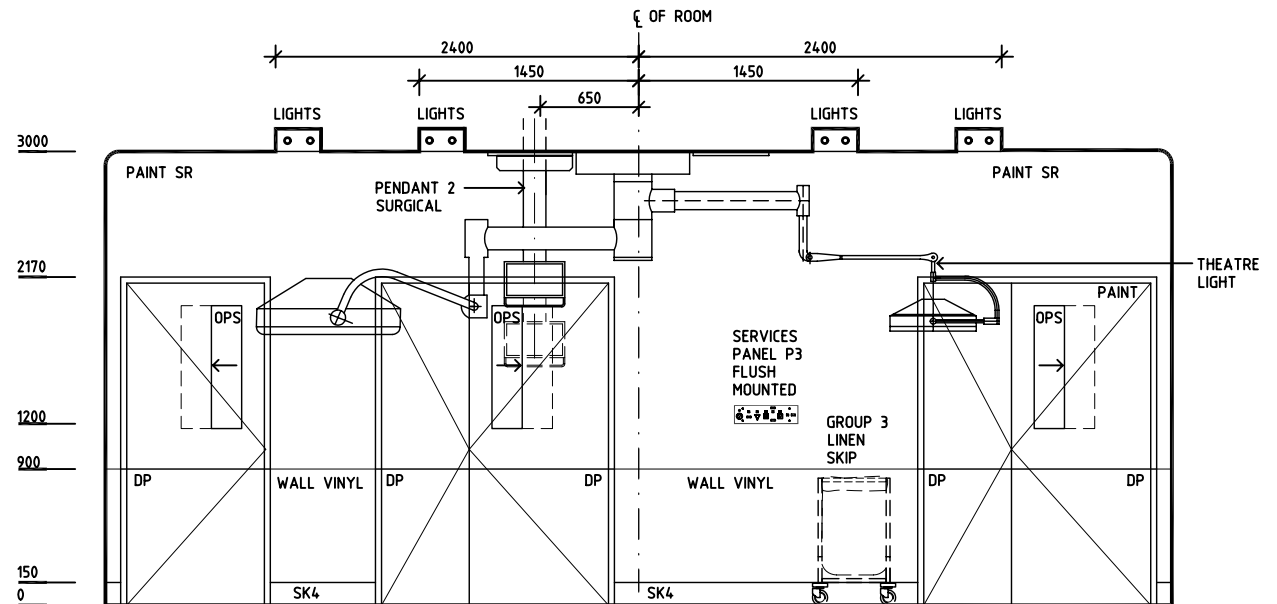
- SERVICES PANEL P4
- NURSE/STAFF ASSIST CALL
 - PORTER CALL (OPTIONAL)
 - EMERGENCY CALL
 - LASER-IN-USE INDICATOR
 - GPO/1 X 2

- PENDANT 1 ANAESTHETIC
- COM/2
 - GPO/1 X 3
 - GPO/1 EP X 3
 - OXYGEN X 2
 - NITROUS OXIDE X 1
 - MEDICAL AIR X 1
 - SUCTION X 2
 - SCAVENGING X 1

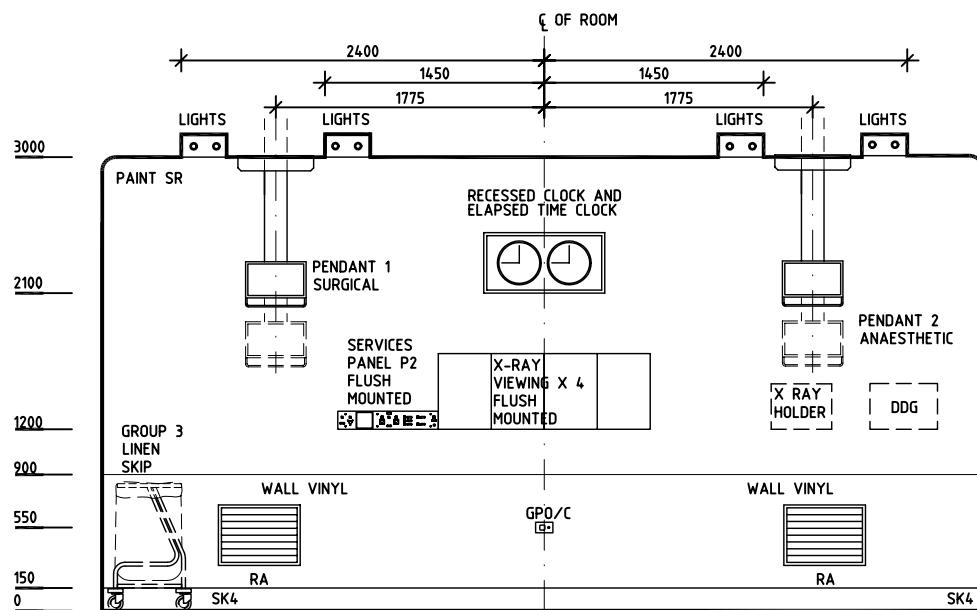
- PENDANT 2 SURGICAL
- COM/2
 - GPO/1 X 3
 - GPO/1 EP X 3
 - OXYGEN X 2
 - NITROUS OXIDE X 1
 - MEDICAL AIR X 1
 - SUCTION X 2
 - SCAVENGING X 1



ELEVATION 2



ELEVATION 3



ELEVATION 4

Rev	Revision Description	Date	Rev	Revision Description	Date	Rev	Revision Description	Date
1	FIRST ISSUE	27.9.04						
2	DRAWING REVISED	25.10.04						