

DGHDP STANDARD COMPONENTS

Room Layout Sheet

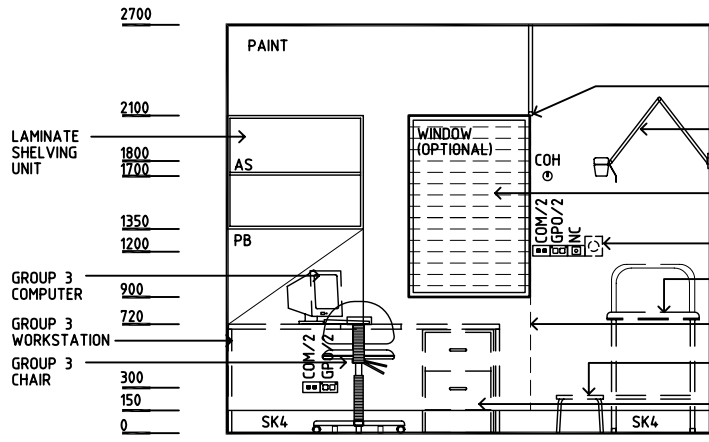
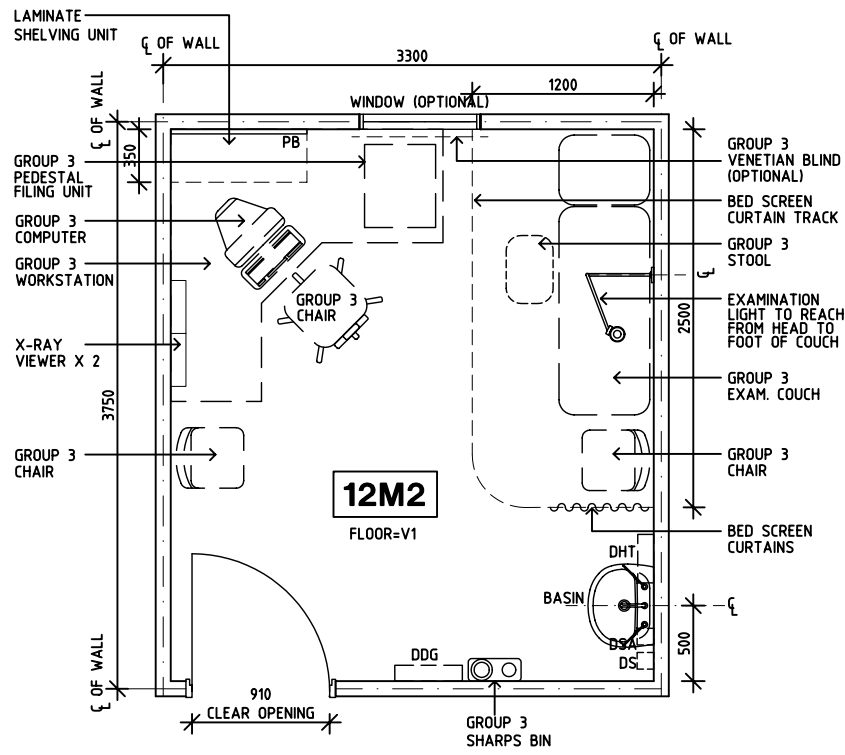
Room Name **Office - Consult**

ID No **OFF-CON**

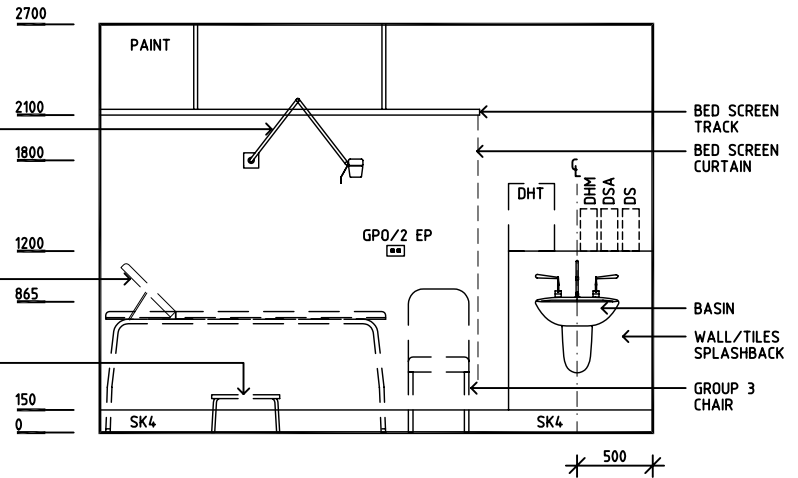
- AS ADJUSTABLE SHELF
- COH COAT HOOK
- COM/2 COMMUNICATION OUTLET, DOUBLE
- DDG DISPENSER - DISPOSABLE GLOVES
- DHM DISPENSER - HAND MOISTURISER
- DHT DISPENSER - HAND TOWEL
- DP DOOR AND FRAME PROTECTION
- DSA DISPENSER - SOAP ANTISEPTIC
- DSA DISPENSER - SOAP
- EC EMERGENCY CALL
- GPO/1 GENERAL PURPOSE OUTLET-SINGLE
- GPO/2 GENERAL PURPOSE OUTLET-DOUBLE
- GPO/2 EP EMERGENCY POWER OUTLET-DOUBLE
- GPO/C GENERAL PURPOSE OUTLET-CLEANER'S
- LS LIGHT SWITCH
- NA NURSE ASSIST
- NC NURSE CALL
- PB PINBOARD
- SK4 FLOOR VINYL COVERED SKIRTING
- V1 VINYL FLOORING STANDARD
- XRV X-RAY VIEWER



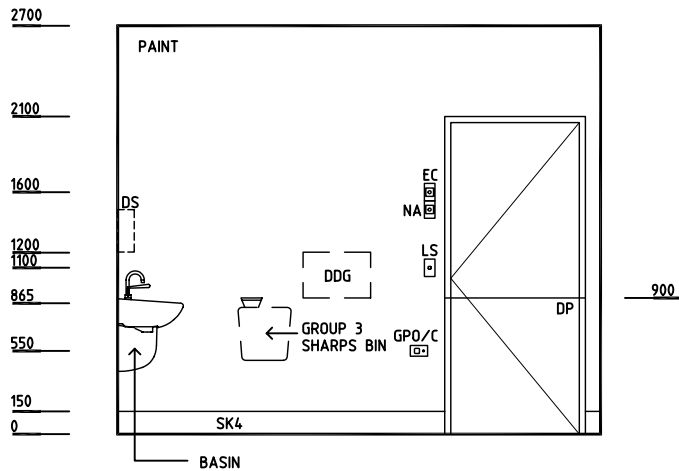
PLAN



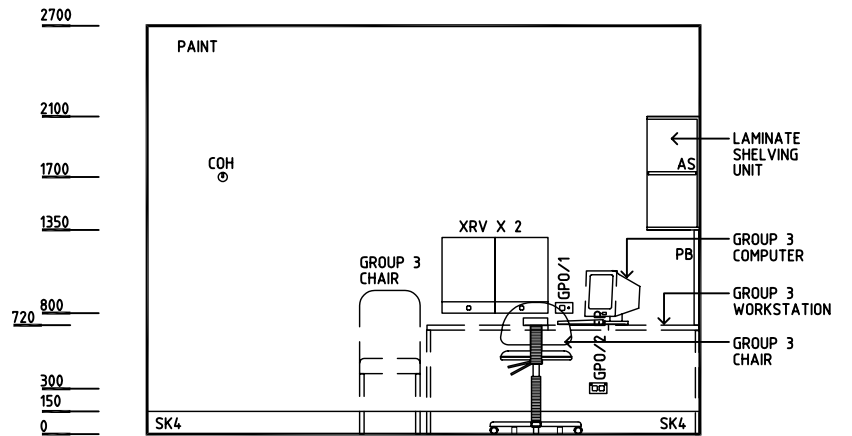
ELEVATION 1



ELEVATION 2



ELEVATION 3



ELEVATION 4

Rev	Revision Description	Date	Rev	Revision Description	Date	Rev	Revision Description	Date
1	FIRST ISSUE	27.9.04						
2	DRAWING REVISED	22.10.04						