

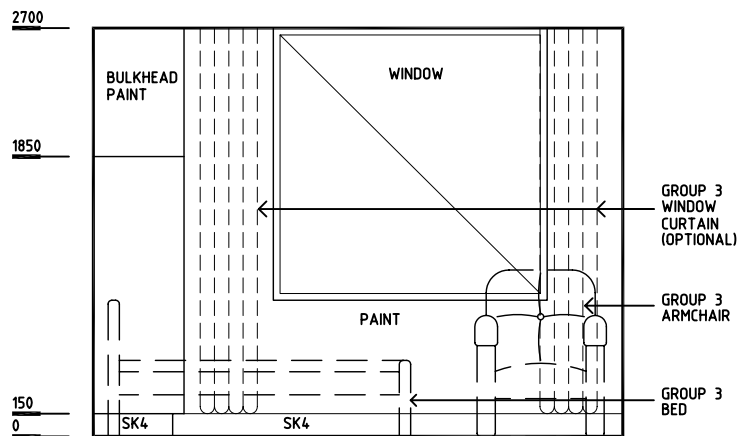
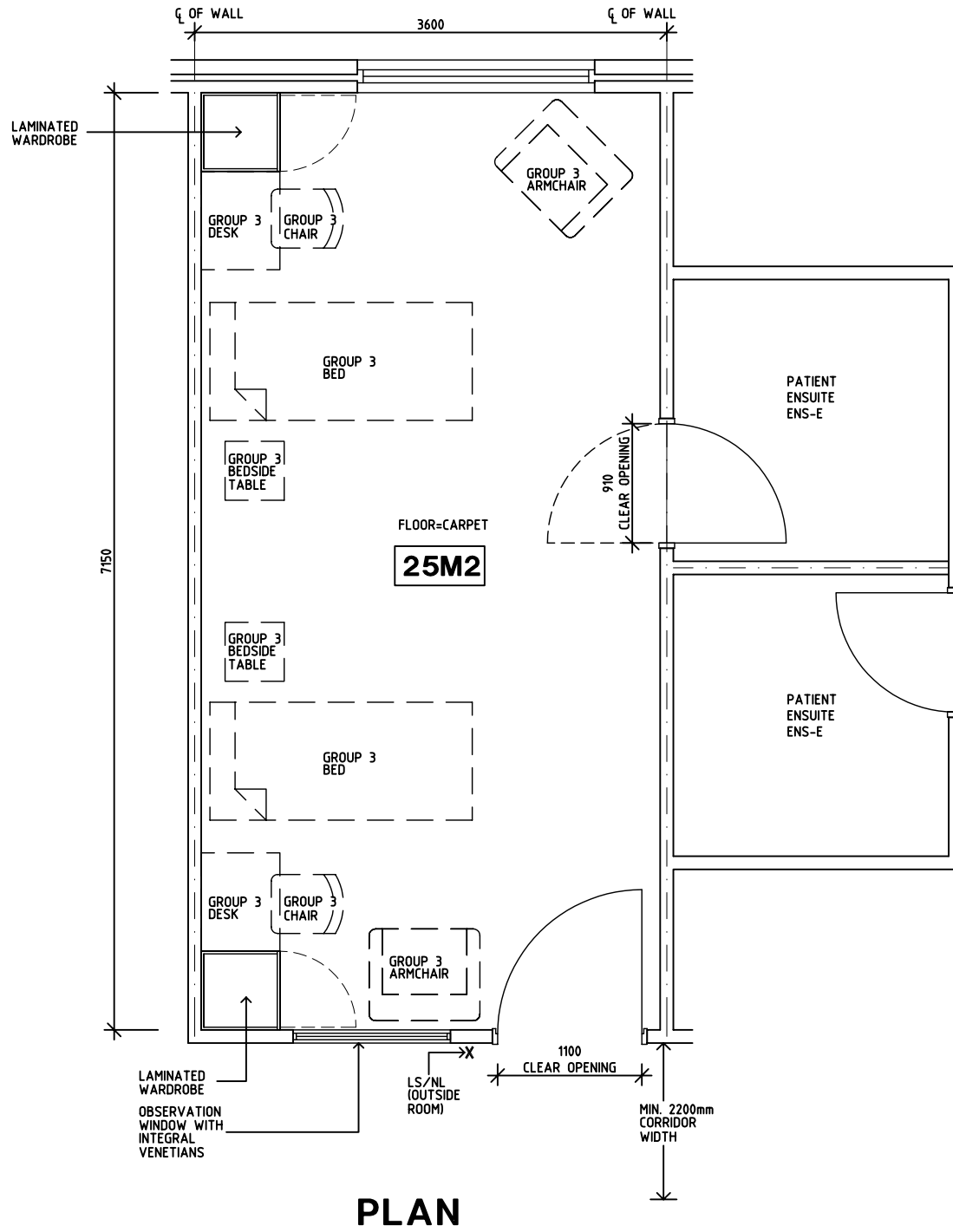
DGHDP STANDARD COMPONENTS

Room Layout Sheet

Room Name **2 Bed Room - Mental Health (Back to Back Ensuite)**

ID No **2 BR-C**

- FS FIXED SHELF
- GPO/1 GENERAL PURPOSE OUTLET-SINGLE
- LS/ENS LIGHT SWITCH - ENSUITE
- LS/NL LIGHT SWITCH - NIGHT LIGHT
- LS/R LIGHT SWITCH - ROOM
- LS/RL LIGHT SWITCH - READING LIGHT
- NA NURSE ASSIST
- NC NURSE CALL
- OP OBSERVATION PANEL
- SK5 FEATHER EDGE VINYL SKIRTING



Rev	Revision Description	Date	Rev	Revision Description	Date	Rev	Revision Description	Date			
1	FIRST ISSUE	16.9.04									
<p>Ground Floor, Suite 1, 68 Alfred Street, Milsons Point NSW 2061 Ph: (02)9460 4199 www.hpi.net.au ACN: 066 856 595</p>						<p>The Department of Human Services, Victoria Design guidelines for hospitals and day procedure centres</p>			<p>The Place To Be</p>		
Drawn		Checked		Date		Scale		Sheet			
CC		DB		16.9.04		1:50 in A3		1 of 2			
CAD File				Drawing No.				Issue			
2 BR-C				2 BR-C				1			

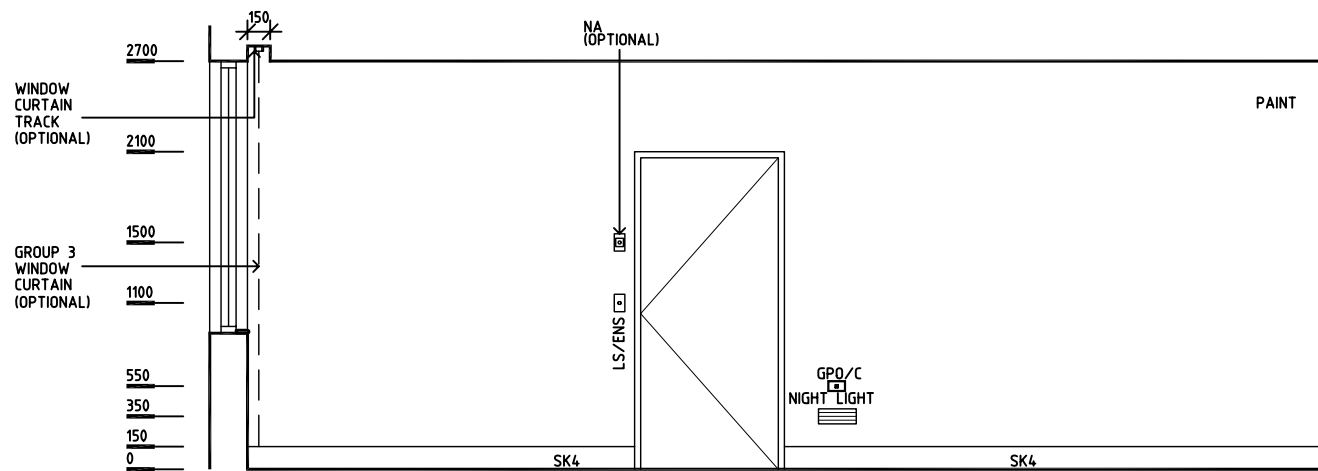
DGHDP STANDARD COMPONENTS

Room Layout Sheet

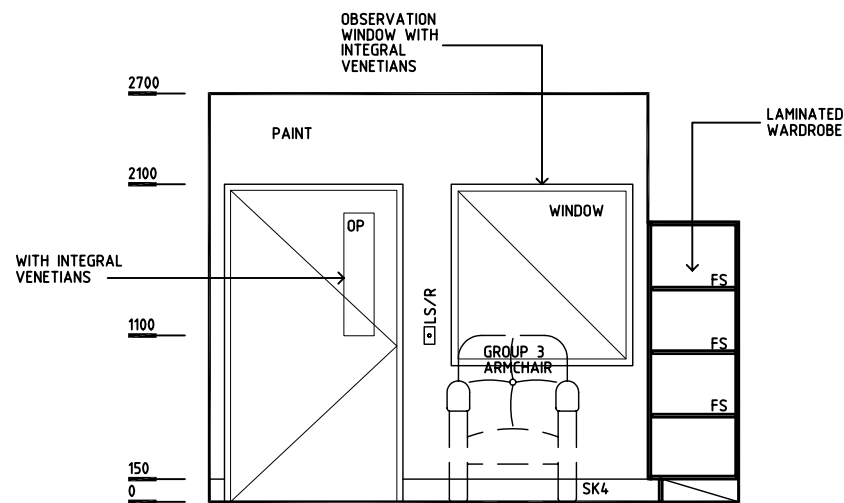
Room Name **2 Bed Room - Mental Health (Back to Back Ensuite)**

ID No **2 BR-C**

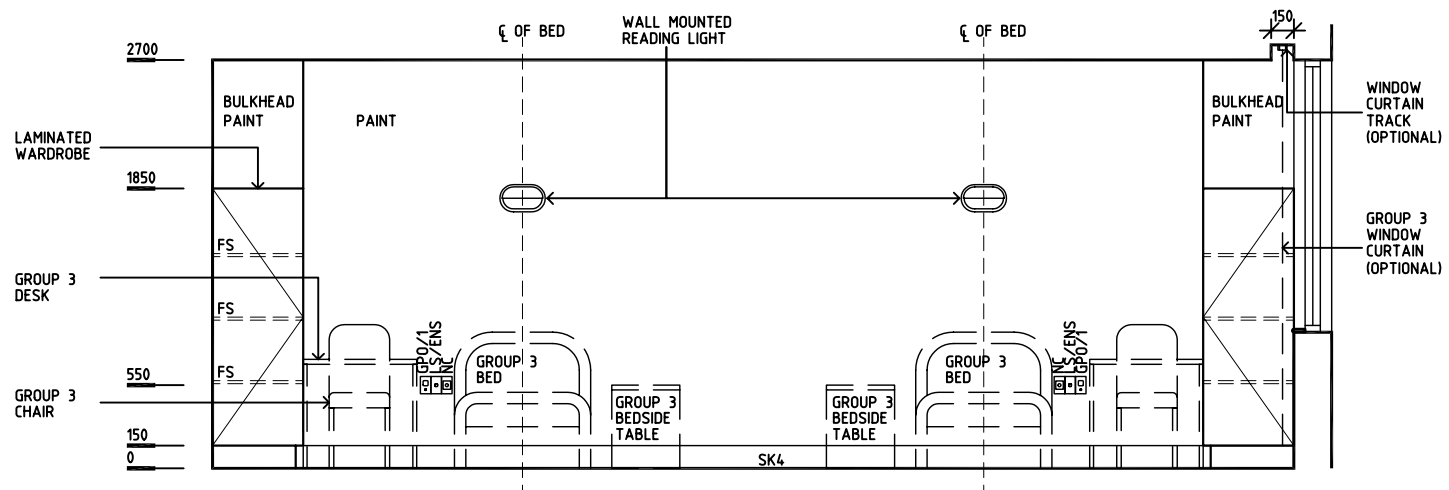
- FS FIXED SHELF
- GPO/1 GENERAL PURPOSE OUTLET-SINGLE
- GPO/C GENERAL PURPOSE OUTLET-CLEANER'S
- LS/ENS LIGHT SWITCH - ENSUITE
- LS/NL LIGHT SWITCH - NIGHT LIGHT
- LS/R LIGHT SWITCH - ROOM
- LS/RL LIGHT SWITCH - READING LIGHT
- NA NURSE ASSIST
- NC NURSE CALL
- OP OBSERVATION PANEL
- SK5 FEATHER EDGE VINYL SKIRTING



ELEVATION 2



ELEVATION 3



ELEVATION 4

Rev	Revision Description	Date	Rev	Revision Description	Date	Rev	Revision Description	Date
1	FIRST ISSUE	16.9.04						
2	DRAWING REVISED	22.10.04						