

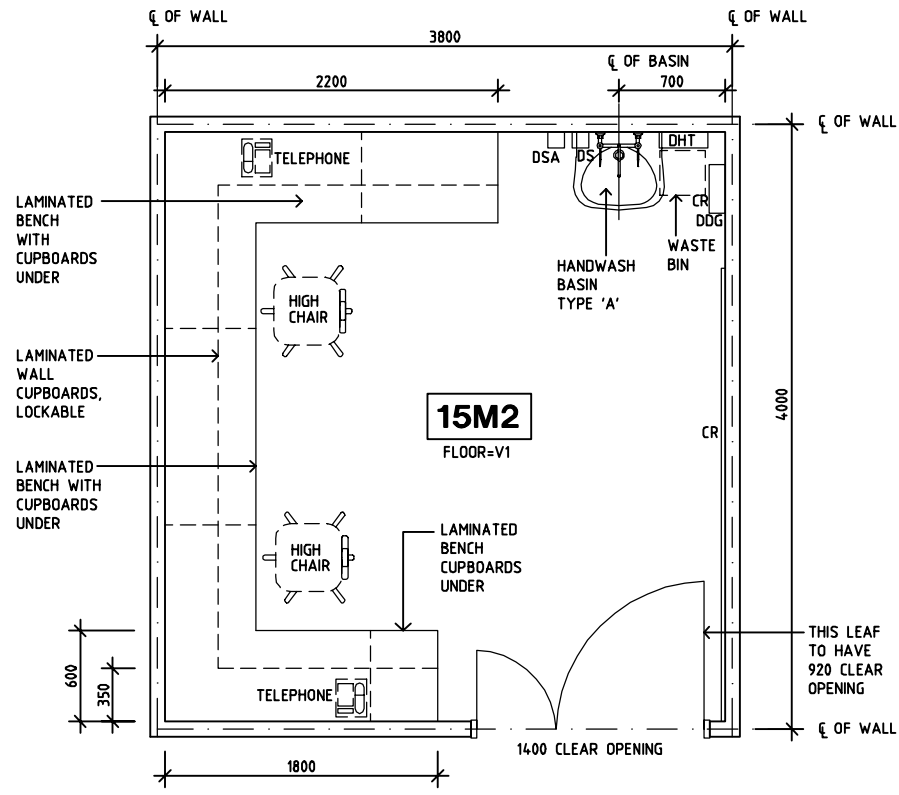
SHARJAH HEALTHCARE CITY STANDARD COMPONENTS

Room Layout Sheet

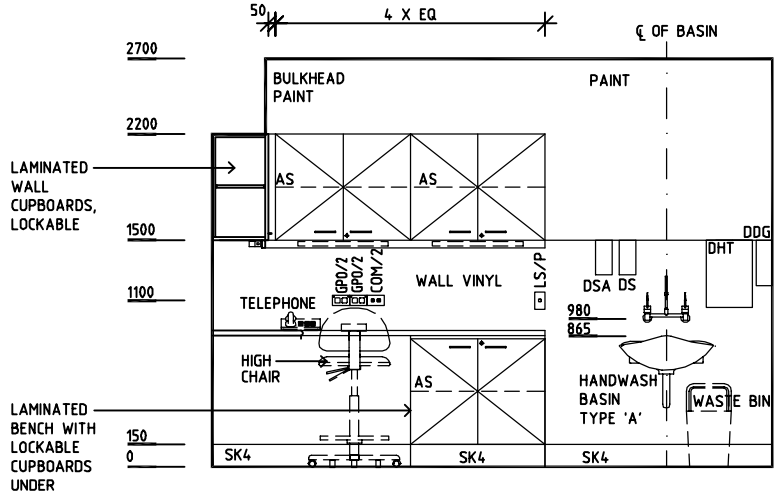
Room Name **Workshop - Biomedical**

RLS Room Code **WS-BM-SJ**
RDS Room Code **WS-BM-SJ**

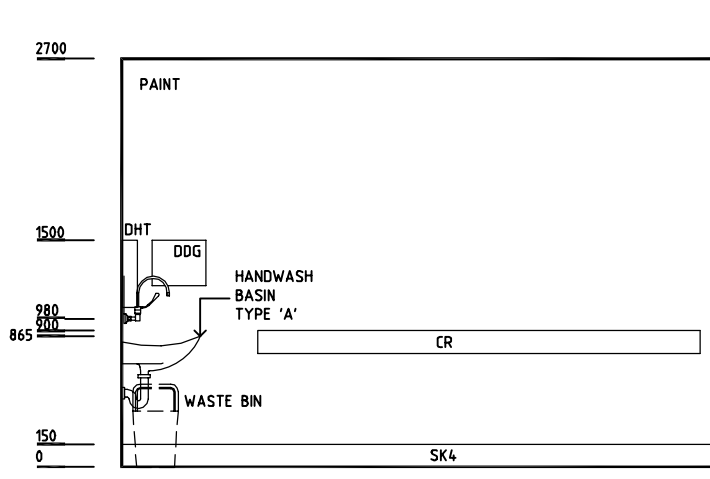
- AS ADJUSTABLE SHELF
- COM/2 COMMUNICATIONS OUTLET - DOUBLE
- CR CRASH RAIL
- DDG DISPENSER - DISPOSABLE GLOVE
- DHT DISPENSER - HAND TOWEL
- DS DISPENSER - SOAP
- DSA DISPENSER - SOAP ANTISEPTIC
- DP DOOR & DOOR FRAME PROTECTION GENERAL
- GPO/2 POWER OUTLET - DOUBLE
- LS/R LIGHT SWITCH - ROOM
- LS/P LIGHT SWITCH - PELMET TASK LIGHT
- MA MEDICAL AIR
- N2O NITROUS OXIDE
- O2 OXYGEN
- OP OBSERVATION PANEL
- S SUCTION
- SC SCAVENGE OUTLET
- SK4 FLOOR VINYL COVED SKIRTING
- V1 VINYL FLOORING, STANDARD SLIP RESISTANT



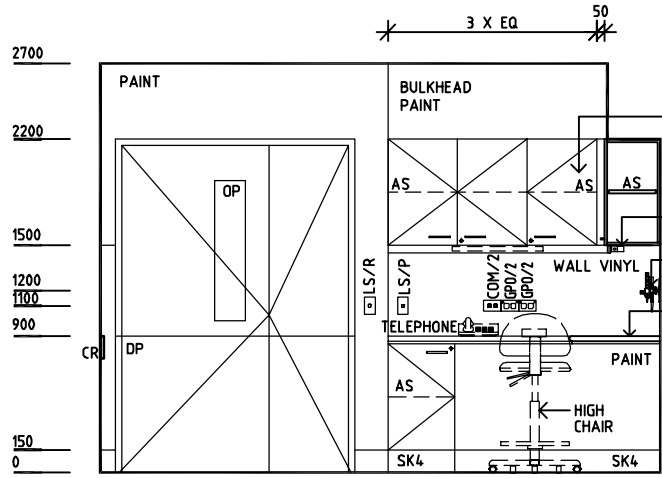
PLAN



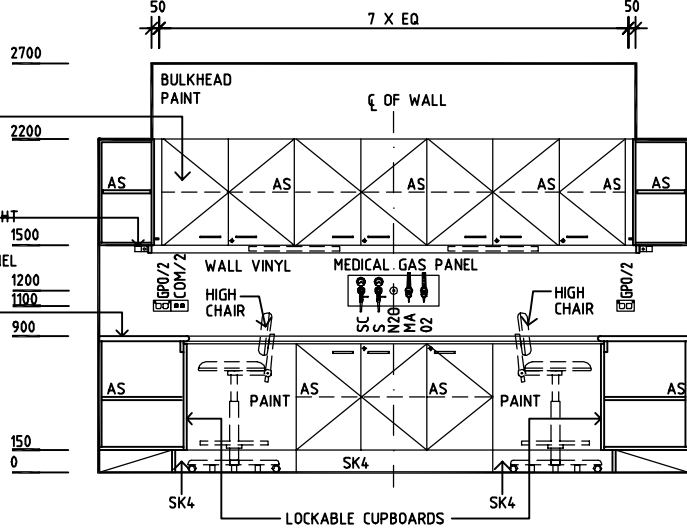
ELEVATION 1



ELEVATION 2



ELEVATION 3



ELEVATION 4

| REV | DESCRIPTION | DATE | BY | REV | DESCRIPTION | DATE | BY | REV | DESCRIPTION | DATE | BY |
|-----|-------------|------------|----|-----|-------------|------|----|-----|-------------|------|----|
| 1 | FIRST ISSUE | 14.03.2014 | AA | | | | | | | | |



Sharjah Health Facility Guidelines at:
www.healthdesign.com.au/shccfg
Editable version of Standard Components on
Health Facility Briefing System (HFBS) at:
www.healthdesign.com.au
Provided by TAHPI

| DESIGNED | APPROVED | DATE | SCALE(S) | SHEET |
|---------------|----------|------------------|------------|--------|
| CC | DB | 30.12.13 | 1:50 in A3 | 1 of 1 |
| CAD FILE NAME | | PAPER DRAWING ID | | ISSUE |
| WS-BM-SJ | | WS-BM-SJ | | 1 |

This document is for advisory purpose only