

SHARJAH HEALTHCARE CITY STANDARD COMPONENTS

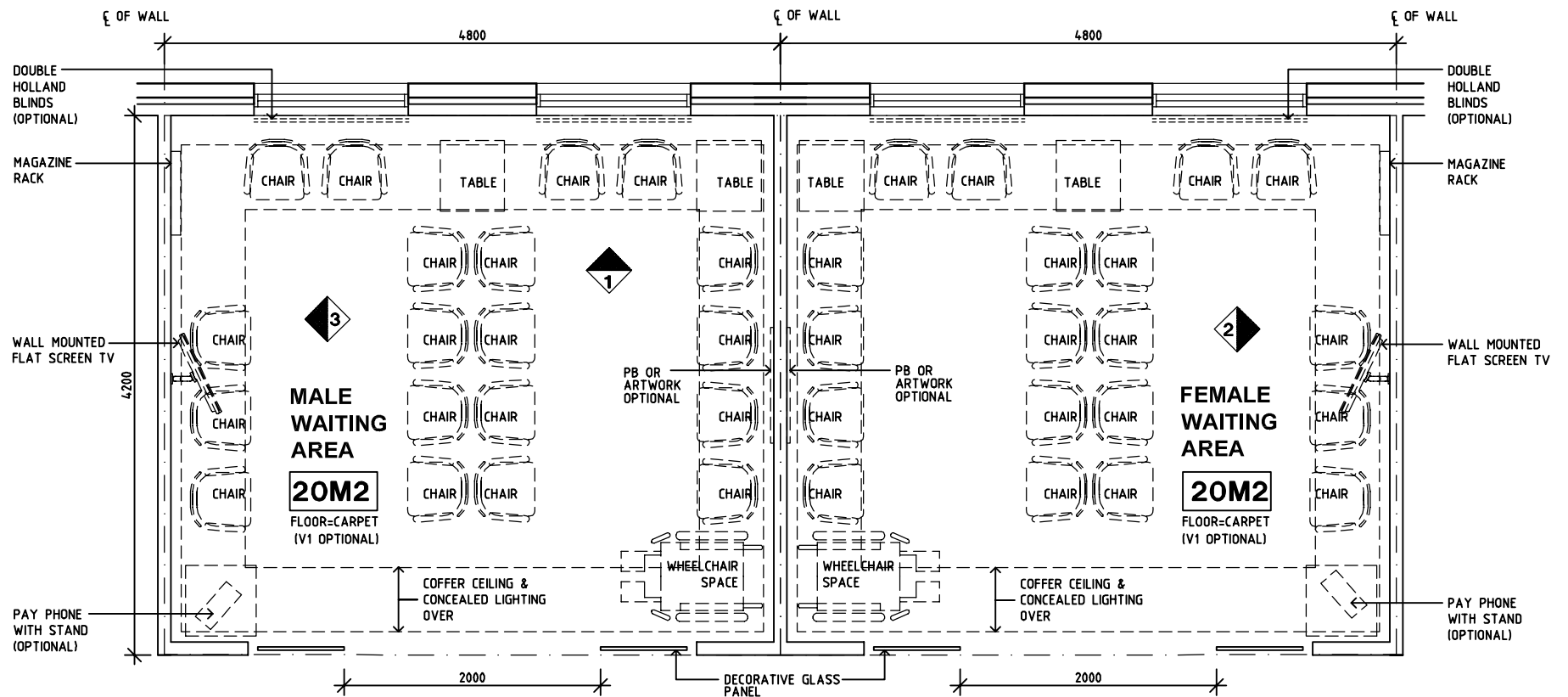
Room Layout Sheet

Room Name **Waiting, 20m2**

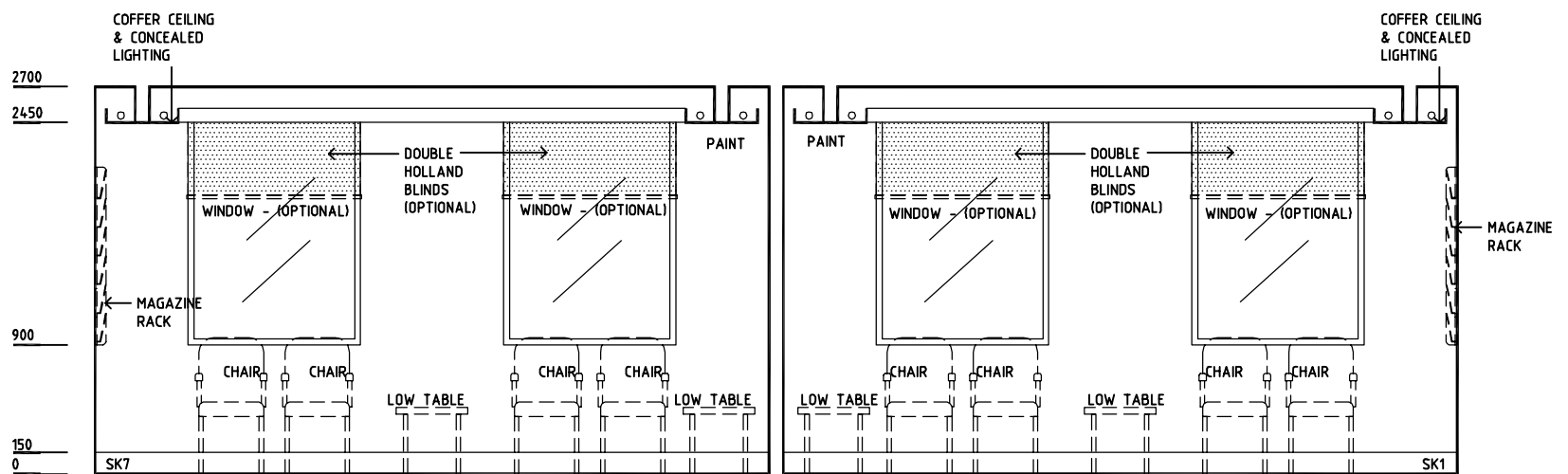
RLS Room Code **WAIT-20-SJ**

RDS Room Code **WAIT-20-SJ**

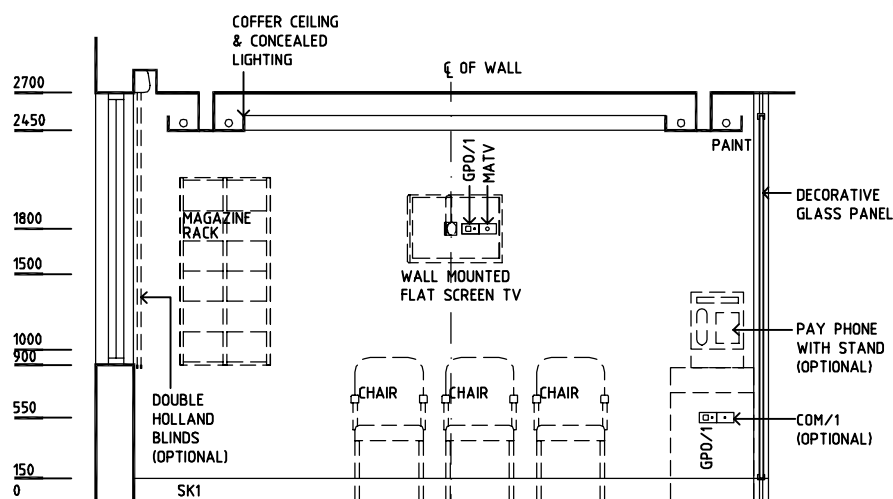
- COM/1 COMMUNICATION OUTLET-SINGLE
- GPO/1 GENERAL POWER OUTLET-SINGLE
- GPO/2 GENERAL POWER OUTLET-DOUBLE
- GPO/C GENERAL POWER OUTLET-CLEANER'S
- MATV MASTER ANTENNA TV
- PB PINBOARD
- SK7 TIMBER SKIRTING
- V1 VINYL FLOORING STANDARD SLIP RESISTANT



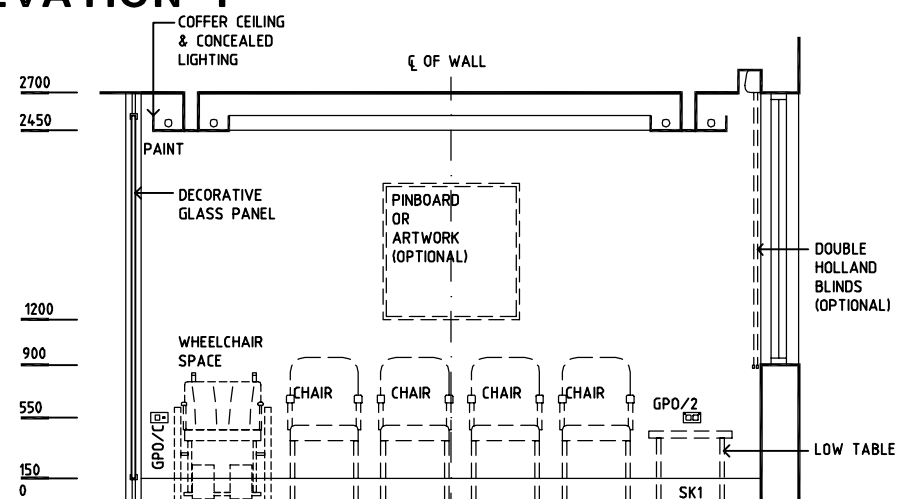
PLAN



ELEVATION 1



ELEVATION 2



ELEVATION 3

REV	DESCRIPTION	DATE	BY	REV	DESCRIPTION	DATE	BY	REV	DESCRIPTION	DATE	BY
1	FIRST ISSUE	14.03.2014	AA								



Sharjah Health Facility Guidelines at:
www.healthdesign.com.au/shccfg
 Editable version of Standard Components on
 Health Facility Briefing System (HFBS) at:
www.healthdesign.com.au
 Provided by TAHPI

DESIGNED	APPROVED	DATE	SCALE(S)	SHEET
CC	DB	30.12.13	1:50 in A3	1 of 1
CAD FILE NAME		PAPER DRAWING ID		ISSUE
WAIT-20-SJ		WAIT-20-SJ		1

This document is for advisory purpose only