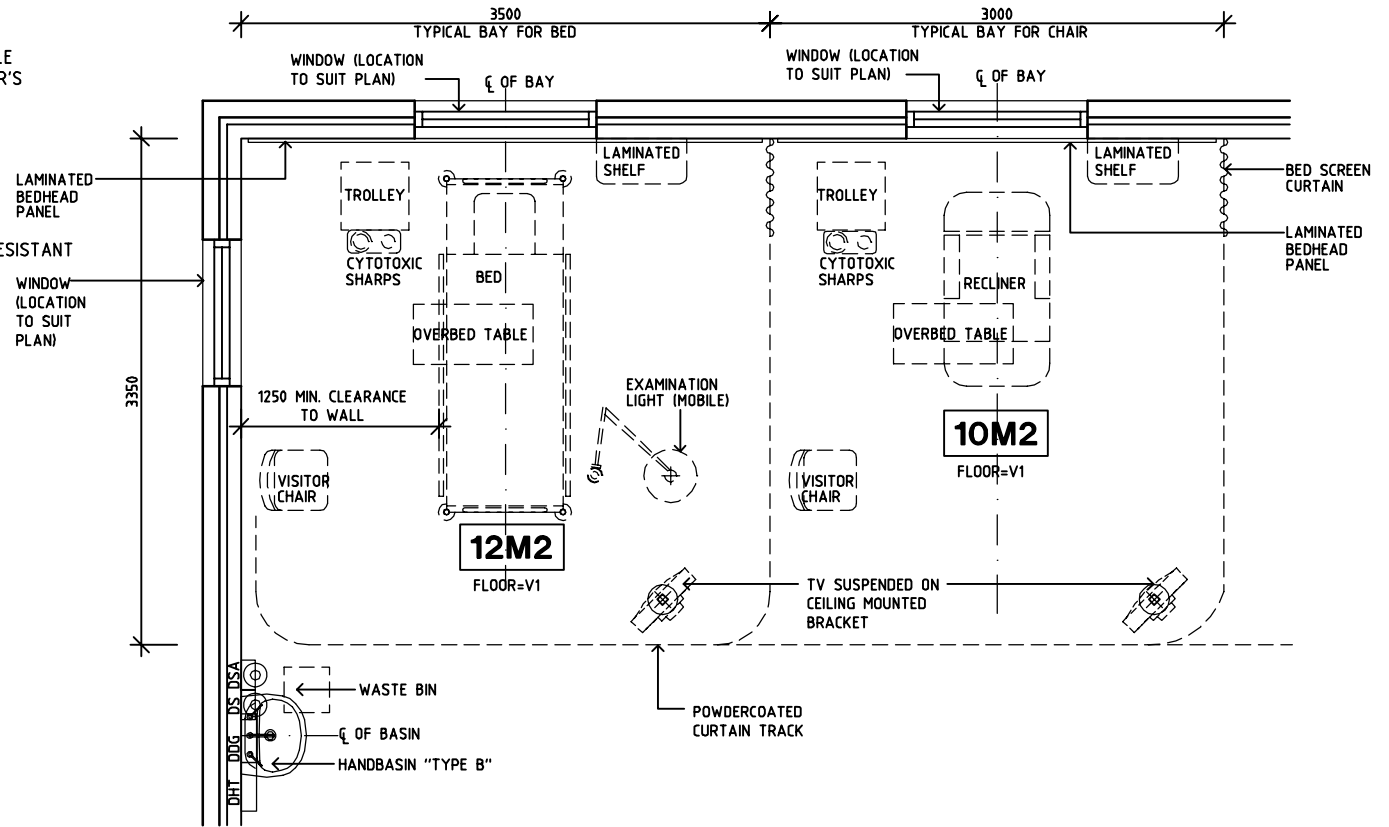


# SHARJAH HEALTHCARE CITY STANDARD COMPONENTS

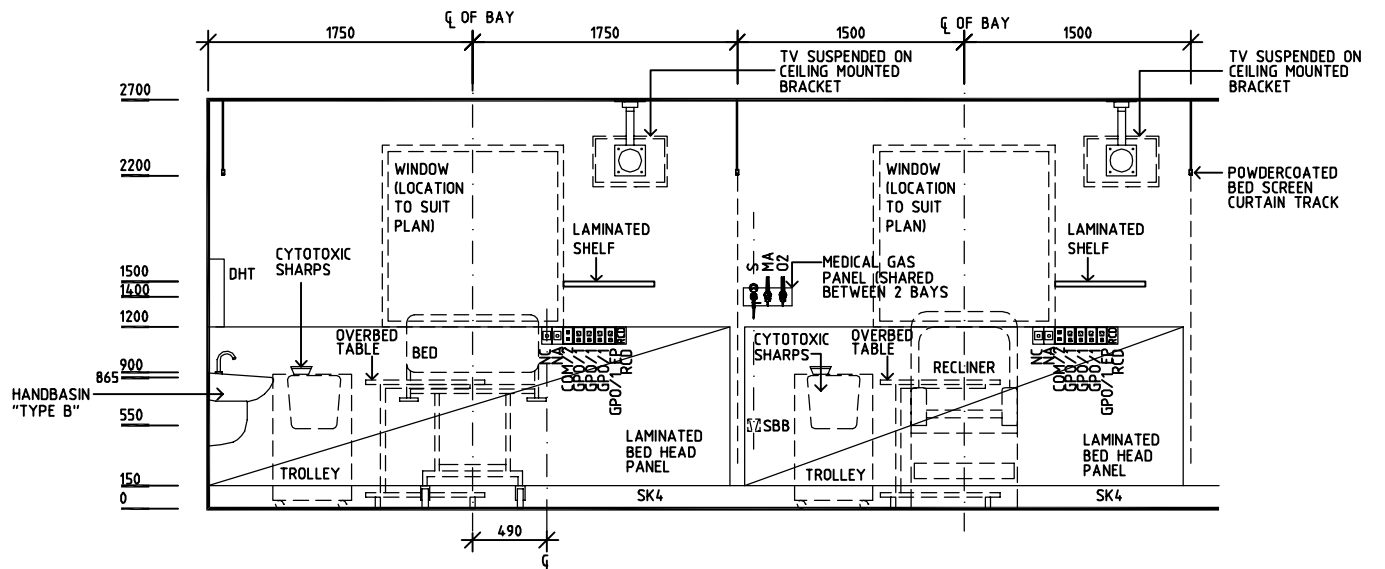
Room Layout Sheet

Room Name: **Treatment Bay - Chemotherapy** | RLS Room Code: **TRMT-CHE-SJ** | RDS Room Code: **TRMT-CHE-SJ**

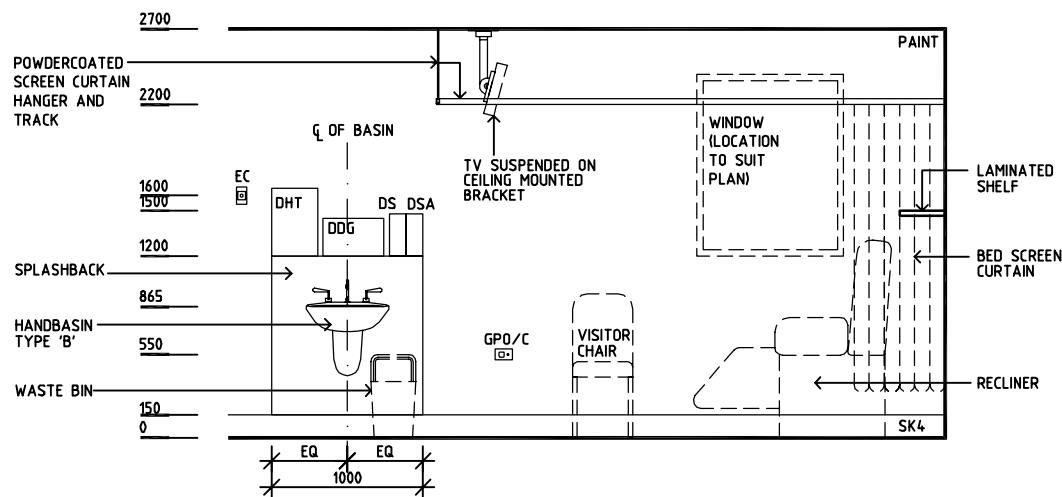
- COM/2 COMMUNICATIONS/DATA OUTLET - DOUBLE
- DDG DISPENSER - DISPOSABLE GLOVE
- DHT DISPENSER - HAND TOWEL
- DS DISPENSER - SOAP
- DSA DISPENSER - SOAP ANTISEPTIC
- EC EMERGENCY CALL
- GPO/1 GENERAL POWER OUTLET - SINGLE
- GPO/1 EP EMERGENCY POWER OUTLET - SINGLE
- GPO/C GENERAL POWER OUTLET - CLEANER'S
- MA MEDICAL AIR
- NA NURSE ASSIST CALL
- NC PATIENT/ NURSE CALL
- O2 OXYGEN
- RCD RESIDUAL CURRENT DEVICE
- S SUCTION
- SBB SUCTION BOTTLE BRACKET
- SK4 FLOOR VINYL COVED SKIRTING
- V1 VINYL FLOORING STANDARD SLIP RESISTANT



**PLAN**



**ELEVATION 1**



**ELEVATION 2**

| REV | DESCRIPTION | DATE       | BY | REV | DESCRIPTION | DATE | BY | REV | DESCRIPTION | DATE | BY |
|-----|-------------|------------|----|-----|-------------|------|----|-----|-------------|------|----|
| 1   | FIRST ISSUE | 14.03.2014 | AA |     |             |      |    |     |             |      |    |



Sharjah Health Facility Guidelines at:  
[www.healthdesign.com.au/shccfg](http://www.healthdesign.com.au/shccfg)  
 Editable version of Standard Components on  
 Health Facility Briefing System (HFBS) at:  
[www.healthdesign.com.au](http://www.healthdesign.com.au)  
 Provided by TAHPI

| DESIGNED      | APPROVED | DATE             | SCALE(S)   | SHEET  |
|---------------|----------|------------------|------------|--------|
| CC            | DB       | 30.12.13         | 1:50 in A3 | 1 of 1 |
| CAD FILE NAME |          | PAPER DRAWING ID |            | ISSUE  |
| TRMT-CHE-SJ   |          | TRMT-CHE-SJ      |            | 1      |

This document is for advisory purpose only