

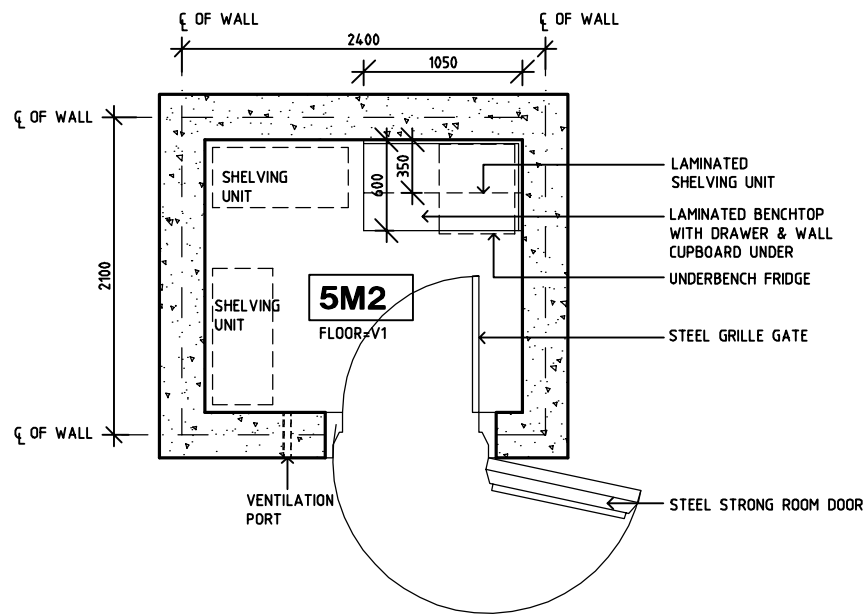
SHARJAH HEALTHCARE CITY STANDARD COMPONENTS

Room Layout Sheet

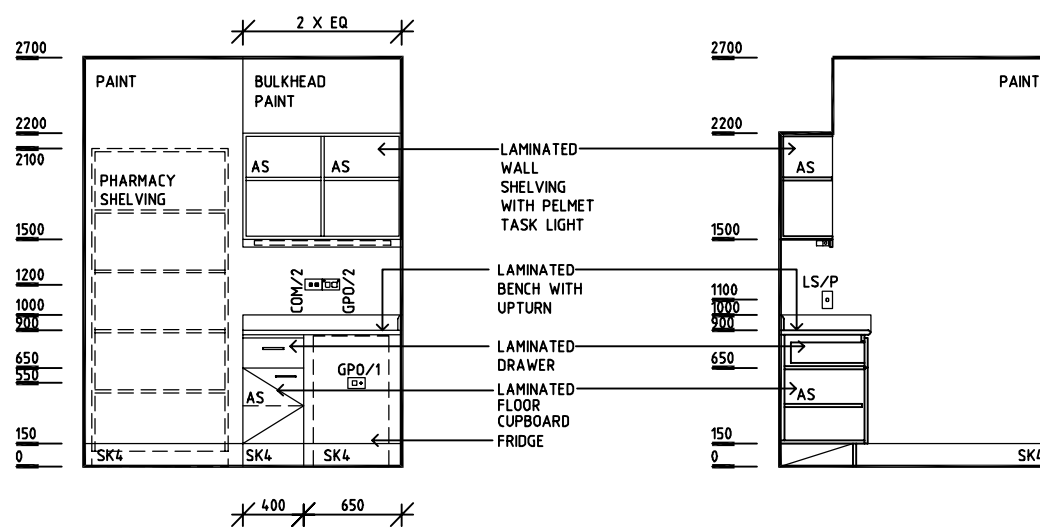
Room Name | **Store - Accountable Drugs**

RLS Room Code | **STAD-SJ**
RDS Room Code | **STAD-SJ**

- AS | ADJUSTABLE SHELF
- COM/2 | COMMUNICATIONS OUTLET - DOUBLE
- DA | DURESS ALARM
- GPO/1 | GENERAL POWER OUTLET - SINGLE
- GPO/2 | GENERAL POWER OUTLET - DOUBLE
- LS/R | LIGHT SWITCH - ROOM
- LS/P | LIGHT SWITCH - PELMET
- SK4 | FLOOR VINYL COVED SKIRTING
- V1 | VINYL FLOORING STANDARD SLIP RESISTANT

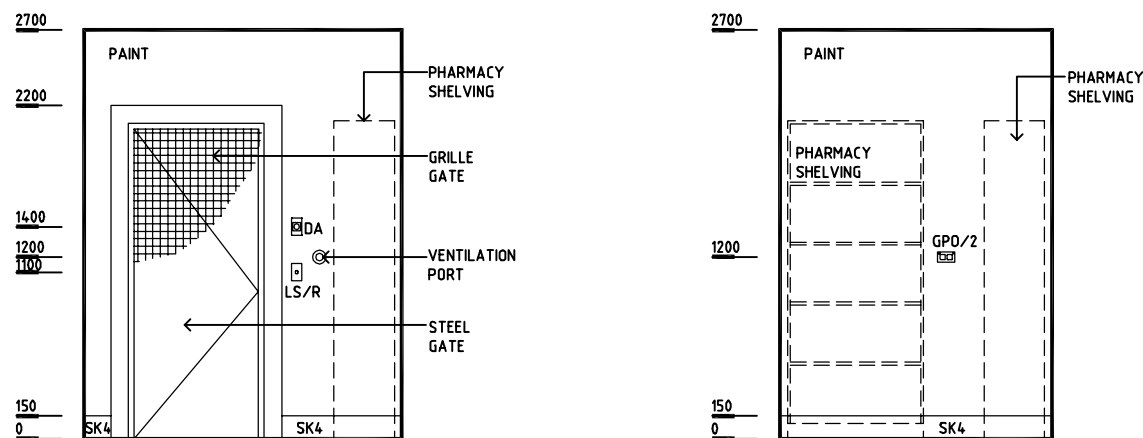


PLAN



ELEVATION 1

ELEVATION 2



ELEVATION 3

ELEVATION 4

REV	DESCRIPTION	DATE	BY	REV	DESCRIPTION	DATE	BY	REV	DESCRIPTION	DATE	BY
1	FIRST ISSUE	14.03.2014	AA								



Sharjah Health Facility Guidelines at:
www.healthdesign.com.au/shcc/hfg
Editable version of Standard Components on
Health Facility Briefing System (HFBS) at:
www.healthdesign.com.au
Provided by TAHPI

DESIGNED	APPROVED	DATE	SCALE(S)	SHEET
CC	DB	30.12.13	1:50 in A3	1 of 1
CAD FILE NAME		PAPER DRAWING ID		ISSUE
STAD-SJ		STAD-SJ		1

This document is for advisory purpose only