

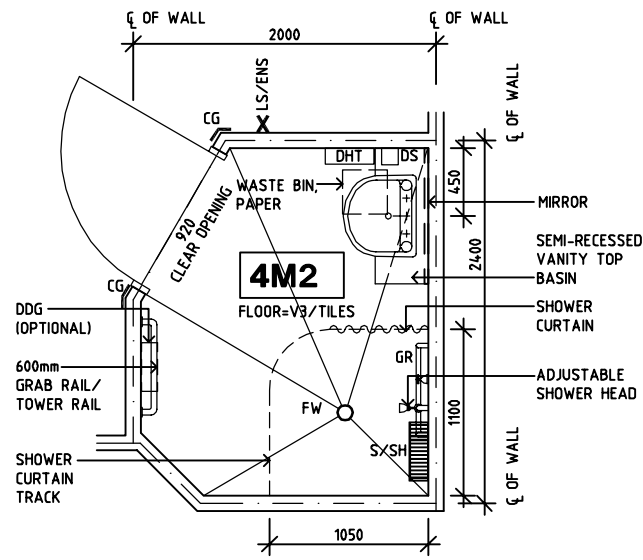
# SHARJAH HEALTHCARE CITY STANDARD COMPONENTS

Room Layout Sheet

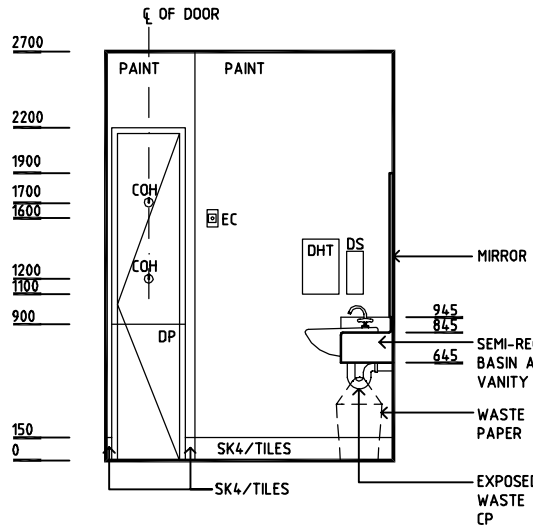
Room Name **Shower - Patient**

RLS Room Code **SHPT-SJ**  
RDS Room Code **SHPT-SJ**

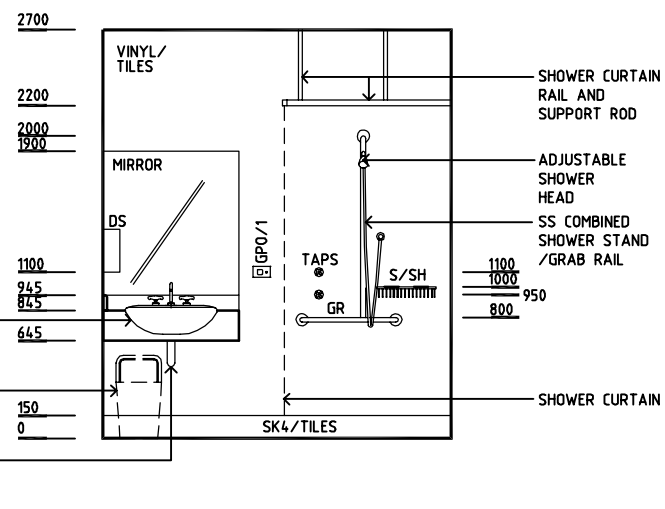
- CH CATHETER HOOK
- COH COAT HOOK
- CG CORNER GUARD
- CP CHROME PLATED
- DHT DISPENSER HAND TOWEL
- DP DOOR AND DOOR FRAME PROTECTION
- DS DISPENSER - SOAP
- DDG DISPENSER - DISPOSABLE GLOVE
- EC EMERGENCY CALL
- FW FLOOR WASTE
- GPO/1 GENERAL POWER OUTLET - SINGLE
- GPO/2 GENERAL POWER OUTLET - DOUBLE
- GR GRAB RAIL
- IV IV HOOK
- LS/ENS LIGHT SWITCH - ENSUITE
- NA NURSE ASSIST CALL
- NC PATIENT NURSE CALL
- S/SH SOAP AND SHAMPOO HOLDER
- SK4 FLOOR VINYL COVERED SKIRTING
- V3 VINYL FLOORING, NON-SLIP - STUDDED



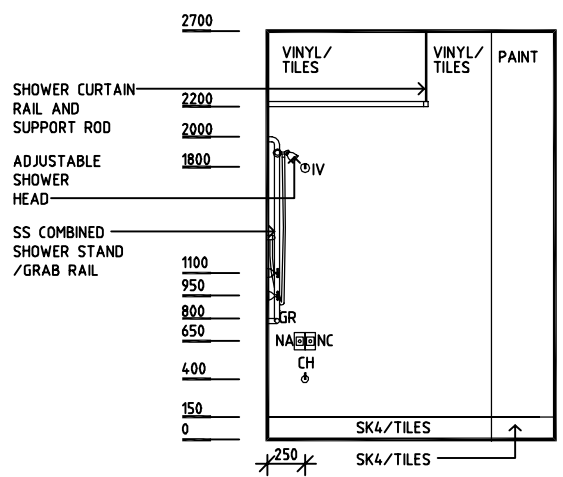
**PLAN**



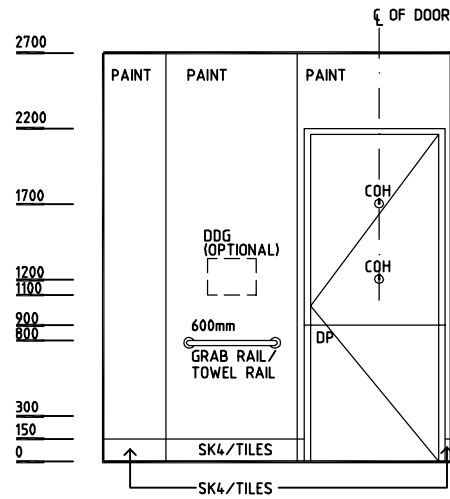
**ELEVATION 1**



**ELEVATION 2**



**ELEVATION 3**



**ELEVATION 4**

REV	DESCRIPTION	DATE	BY	REV	DESCRIPTION	DATE	BY	REV	DESCRIPTION	DATE	BY
1	FIRST ISSUE	14.03.2014	AA								



Sharjah Health Facility Guidelines at:  
www.healthdesign.com.au/shccfg  
Editable version of Standard Components on  
Health Facility Briefing System (HFBS) at:  
www.healthdesign.com.au  
Provided by TAHPI

DESIGNED	APPROVED	DATE	SCALE(S)	SHEET
CC	DB	30.12.13	1:50 in A3	1 of 1
CAD FILE NAME		PAPER DRAWING ID		ISSUE
SHPT-SJ		SHPT-SJ		1

This document is for advisory purpose only