

SHARJAH HEALTHCARE CITY STANDARD COMPONENTS

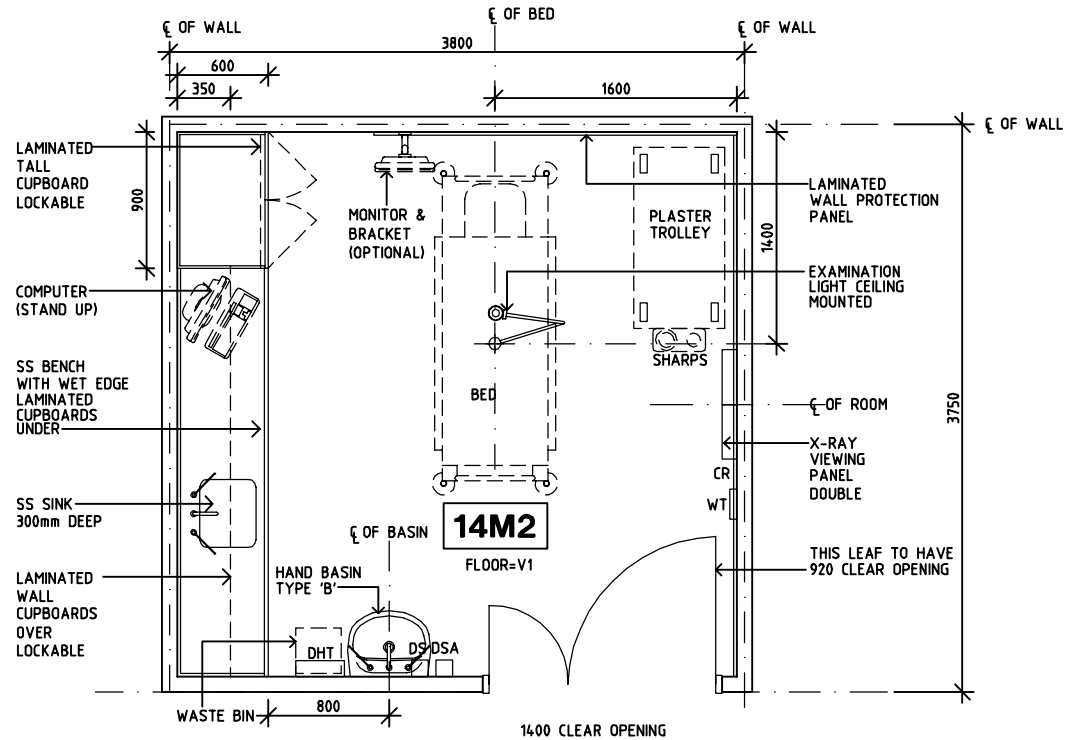
Room Layout Sheet

Room Name **Plaster Room**

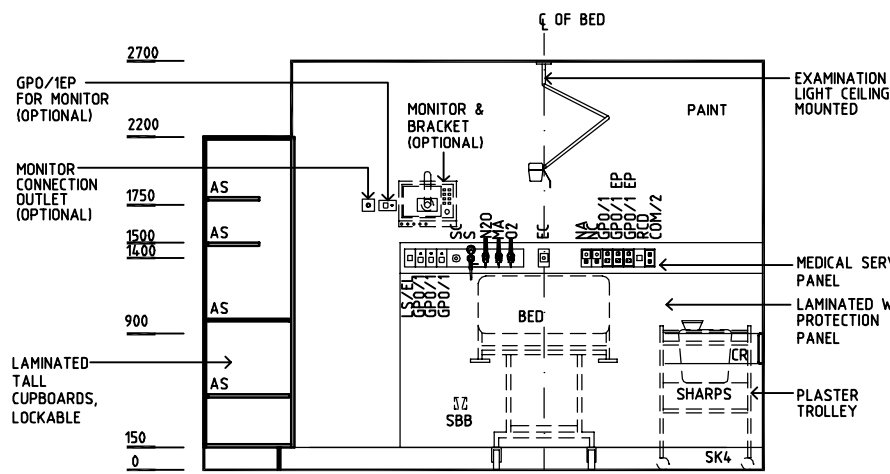
RLS Room Code **PLST-SJ**

RDS Room Code **PLST-SJ**

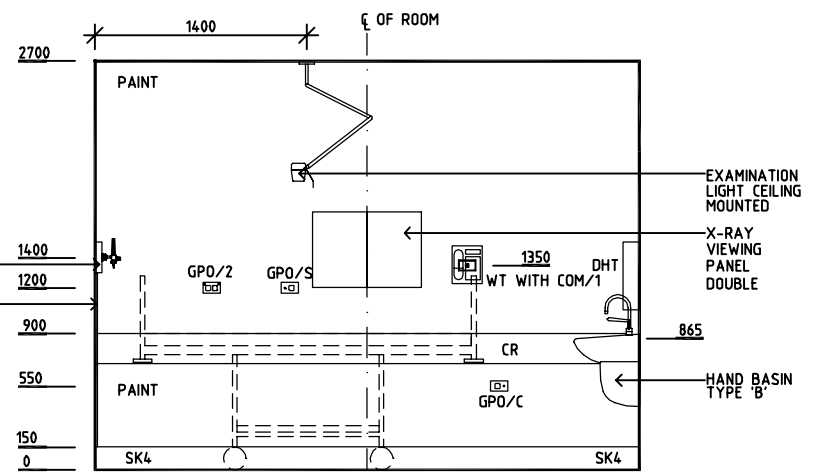
- AS ADJUSTABLE SHELF
- COM/1 COMMUNICATION OUTLET - SINGLE
- COM/2 COMMUNICATION OUTLET - DOUBLE
- CR CRASH RAIL
- DDG DISPENSER - DISPOSABLE GLOVES
- DHT DISPENSER - HAND TOWEL
- DP DOOR AND DOOR FRAME PROTECTION
- DS DISPENSER - SOAP
- DSA DISPENSER - SOAP ANTISEPTIC
- EC EMERGENCY CALL
- GPO/1 GENERAL POWER OUTLET - SINGLE
- GPO/2 GENERAL POWER OUTLET - DOUBLE
- GPO/S GENERAL POWER OUTLET - SPECIAL SINGLE
- GPO/1 EP EMERGENCY POWER - SINGLE
- GPO/C GENERAL POWER OUTLET - CLEANER'S
- LS/EL LIGHT SWITCH - EXAMINATION LIGHT
- LS/R LIGHT SWITCH - ROOM
- LS/P LIGHT SWITCH - PELMET
- MA MEDICAL AIR
- NA NURSE ASSIST CALL
- NC PATIENT/NURSE CALL
- N2O NITROUS OXIDE
- O2 OXYGEN
- OP OBSERVATION PANEL - SLIDING COVER
- RCD RESIDUAL CURRENT DEVICE
- S SUCTION
- SBB SUCTION BOTTLE BRACKET
- SC SCAVENGE OUTLET
- SK4 FLOOR VINYL COVERED SKIRTING
- SS STAINLESS STEEL
- V1 VINYL FLOORING, STANDARD SLIP RESISTANT
- WT WALL TELEPHONE



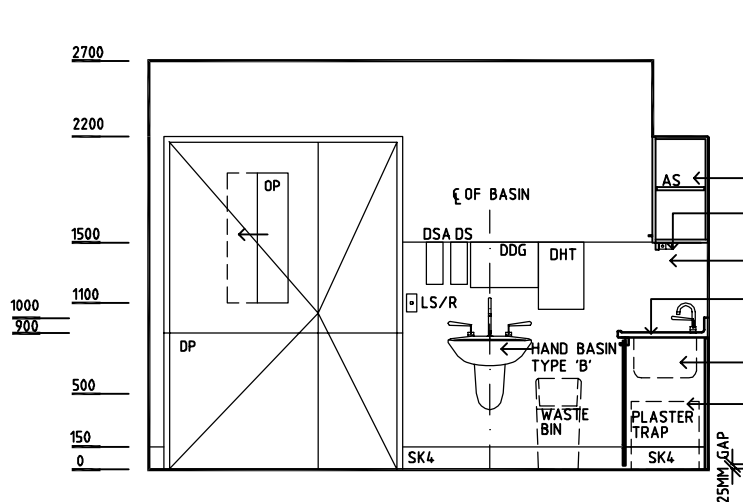
PLAN



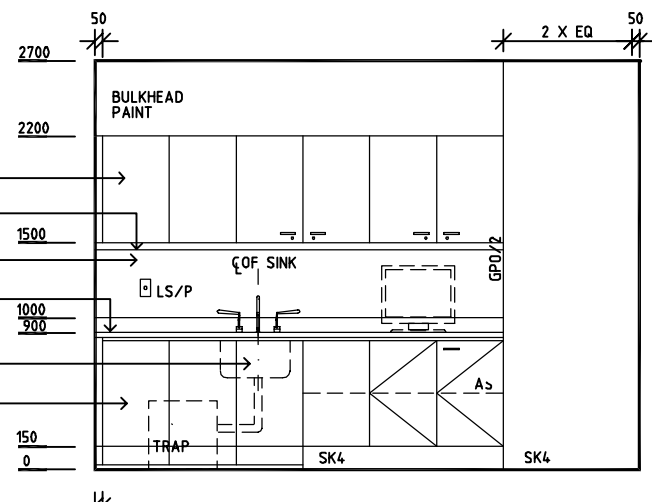
ELEVATION 1



ELEVATION 2



ELEVATION 3



ELEVATION 4

| REV | DESCRIPTION | DATE | BY | REV | DESCRIPTION | DATE | BY | REV | DESCRIPTION | DATE | BY |
|-----|-------------|------------|----|-----|-------------|------|----|-----|-------------|------|----|
| 1 | FIRST ISSUE | 14.03.2014 | AA | | | | | | | | |



Sharjah Health Facility Guidelines at:
www.healthdesign.com.au/shccfg
 Editable version of Standard Components on
 Health Facility Briefing System (HFBS) at:
www.healthdesign.com.au
 Provided by TAHPI

| DESIGNED | APPROVED | DATE | SCALE(S) | SHEET |
|---------------|----------|------------------|------------|--------|
| CC | DB | 30.12.13 | 1:50 in A3 | 1 of 1 |
| CAD FILE NAME | | PAPER DRAWING ID | | ISSUE |
| PLST-SJ | | PLST-SJ | | 1 |

This document is for advisory purpose only