

# SHARJAH HEALTHCARE CITY STANDARD COMPONENTS

Room Layout Sheet

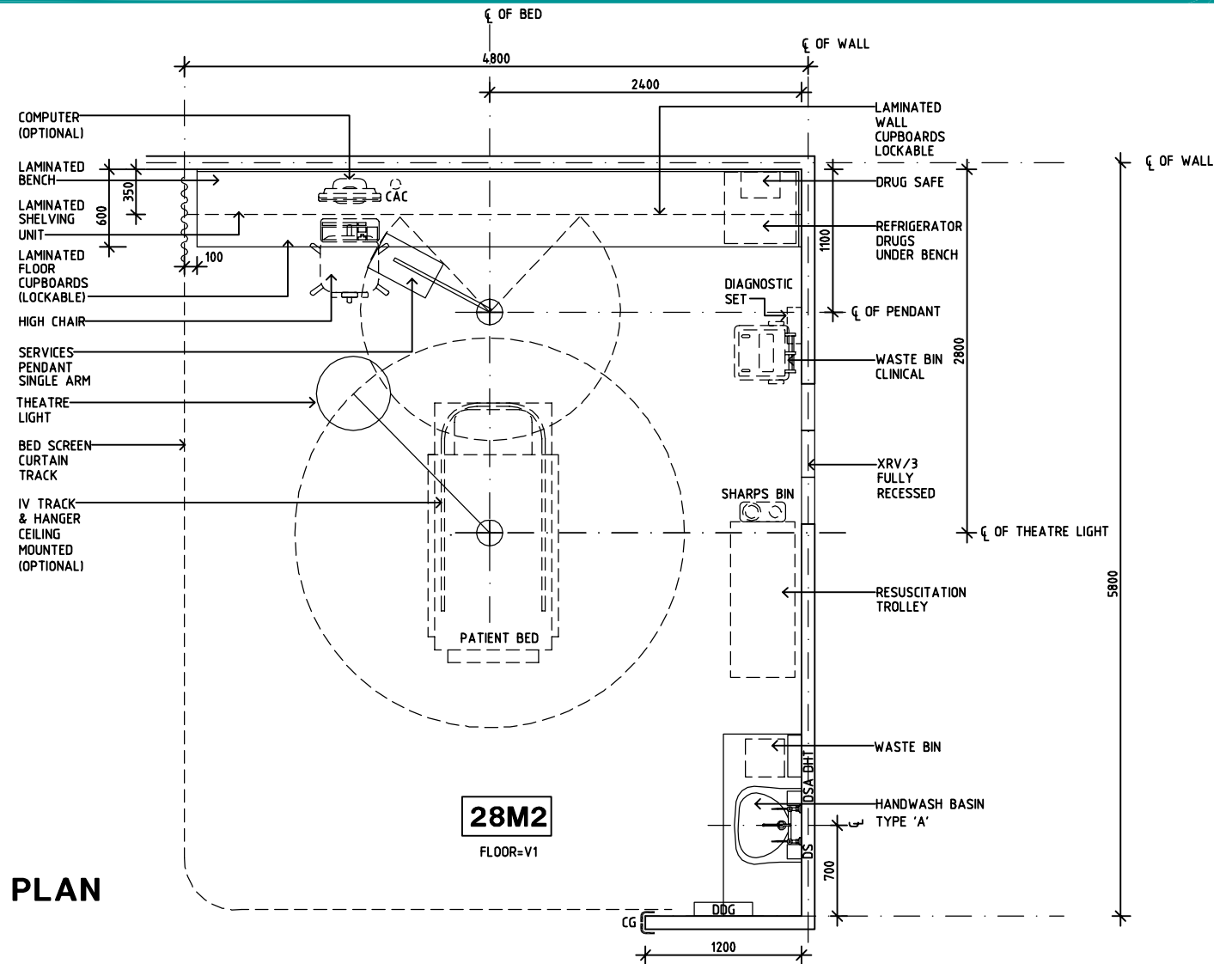
Room Name **Patient Bay - Resuscitation**

RLS Room Code **PBTR-R-SJ**  
RDS Room Code **PBTR-R-SJ**

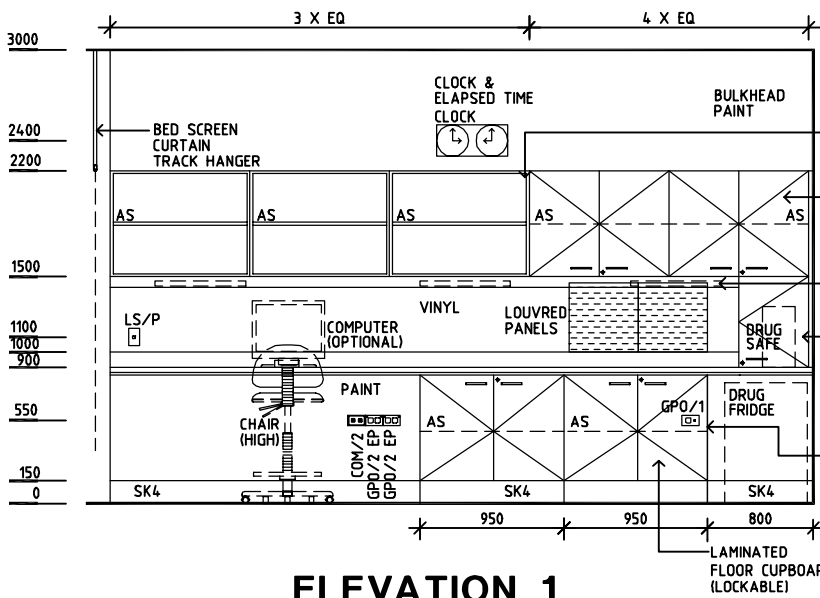
- AS ADJUSTABLE SHELF
- CAC CABLE ACCESS CAP
- CG CORNER GUARD
- CR CRASH RAIL
- COM/2 COMMUNICATION OUTLET - DOUBLE
- DDG DISPENSER - DISPOSABLE GLOVES
- DHT DISPENSER - HAND TOWEL
- DS DISPENSER - SOAP
- DSA DISPENSER - SOAP ANTISEPTIC
- GPO/1 GENERAL POWER OUTLET - SINGLE
- GPO/2 EP EMERGENCY POWER - DOUBLE
- GPO/C GENERAL POWER OUTLET - CLEANER'S
- LS/P LIGHT SWITCH - PELMET
- SK4 FLOOR VINYL COVERED SKIRTING
- TMV THERMOSTATIC MIXING VALVE
- V1 VINYL FLOORING, STANDARD
- XRV/3 X-RAY VIEWER, 3 SCREENS

**SERVICE PENDANT:**

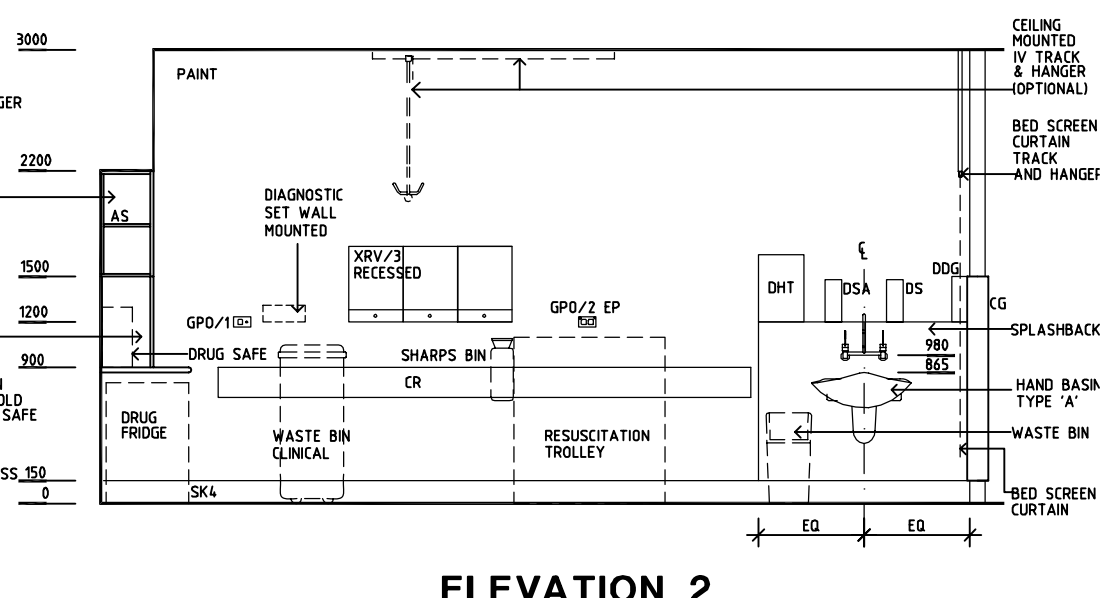
- 1 x EMERGENCY CALL
- 1 x NURSE ASSIST CALL
- 1 x PATIENT/NURSE CALL
- 16 x GPO/1 EMERGENCY POWER
- 3 x OXYGEN
- 2 x MEDICAL AIR
- 1 x NITROUS OXIDE (OPTIONAL)
- 3 x SUCTION
- 1 x SCAVENGE OUTLET (OPTIONAL)
- 1 x MONITOR CONNECTION (OPTIONAL)
- 1 x COM/2
- 1 x RCD



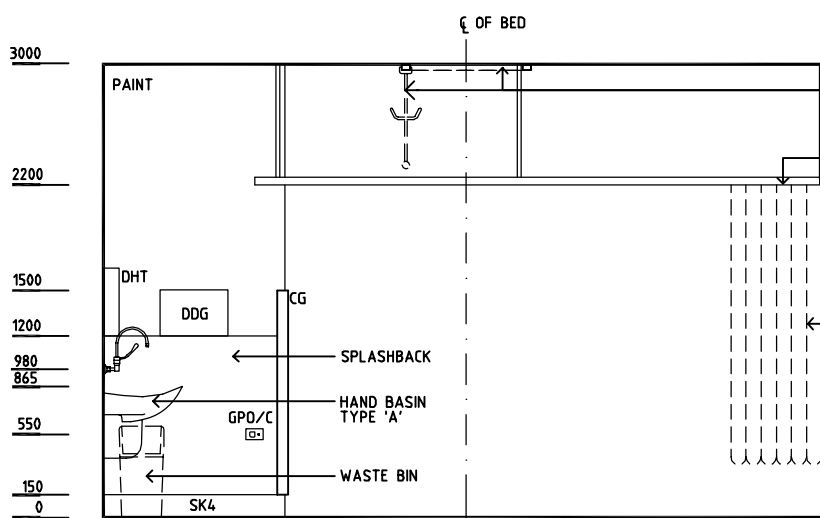
**PLAN**



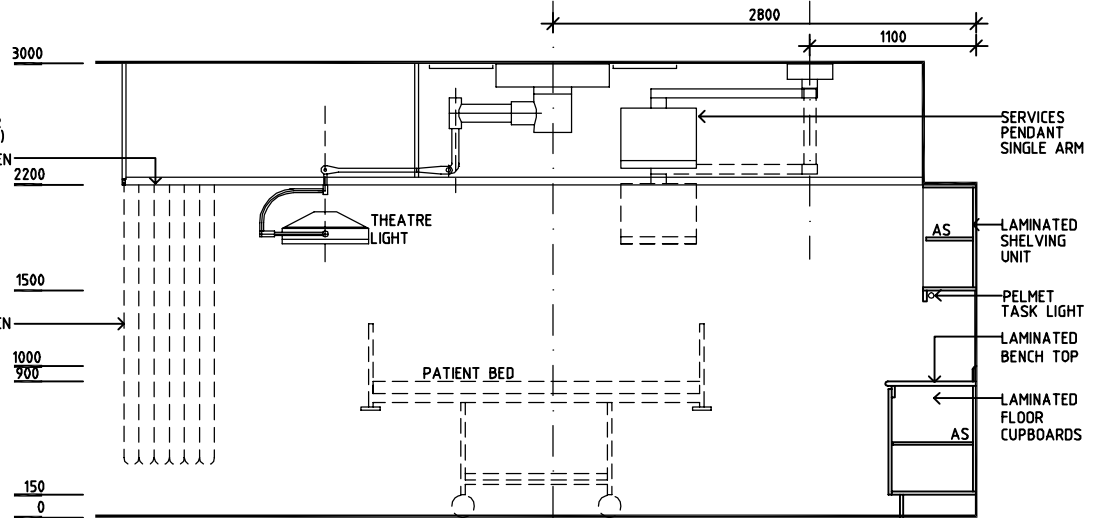
**ELEVATION 1**



**ELEVATION 2**



**ELEVATION 3**



**ELEVATION 4**

REV	DESCRIPTION	DATE	BY	REV	DESCRIPTION	DATE	BY	REV	DESCRIPTION	DATE	BY
1	FIRST ISSUE	14.03.2014	AA								



Sharjah Health Facility Guidelines at:  
www.healthdesign.com.au/shccfg  
Editable version of Standard Components on  
Health Facility Briefing System (HFBS) at:  
www.healthdesign.com.au  
Provided by TAHPI

DESIGNED	APPROVED	DATE	SCALE(S)	SHEET
CC	DB	30.12.13	1:50 in A3	1 of 1
CAD FILE NAME		PAPER DRAWING ID		ISSUE
PBTR-R-SJ		PBTR-R-SJ		1

This document is for advisory purpose only