

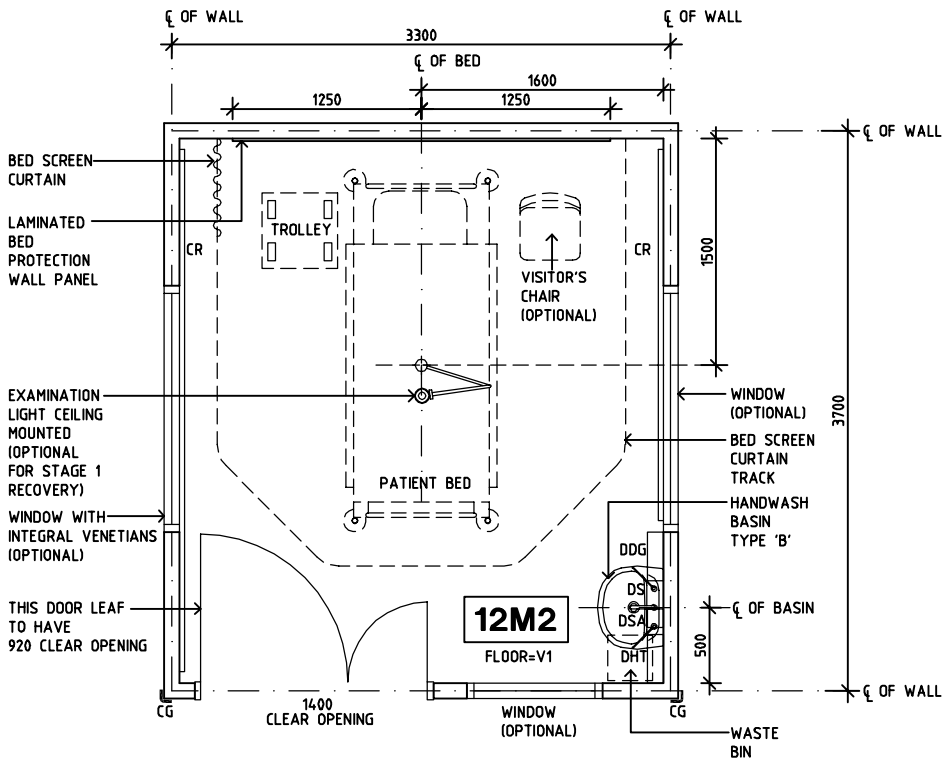
# SHARJAH HEALTHCARE CITY STANDARD COMPONENTS

Room Layout Sheet

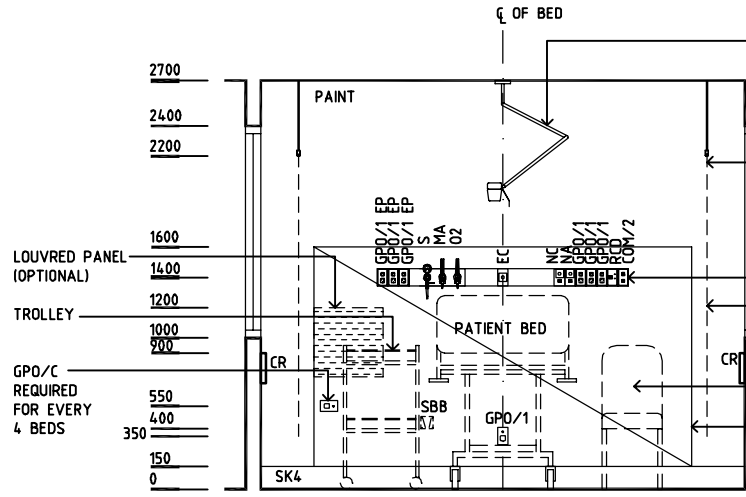
Room Name **Patient Bay - Holding (Enclosed), 12m2**

RLS Room Code **PBTR-H-E-12-SJ**  
RDS Room Code **PBTR-H-E-12-SJ**

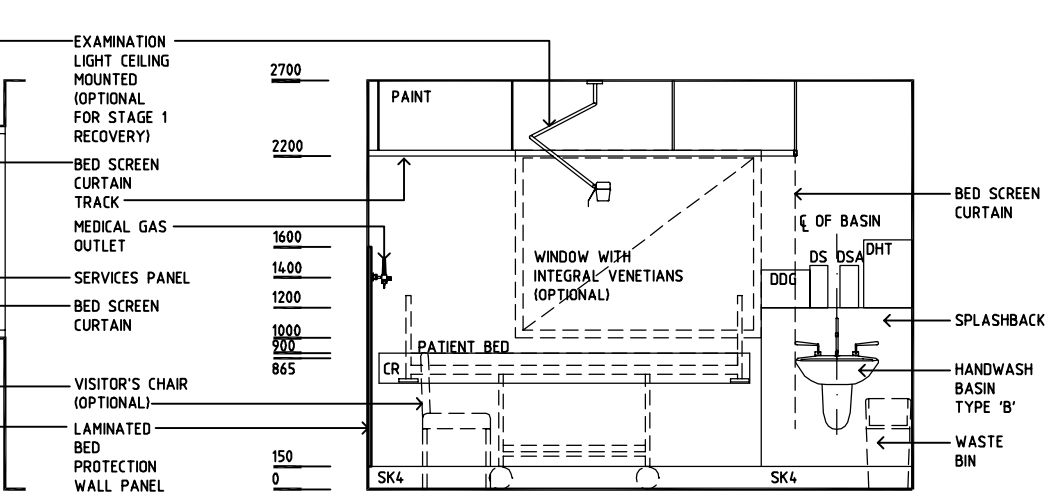
- COM/2 COMMUNICATION OUTLET - DOUBLE
- CG CORNER GUARD
- CR CRASH RAIL
- DDG DISPENSER - DISPOSABLE GLOVES
- DHT DISPENSER - HAND TOWEL
- DS DISPENSER - SOAP
- DS DISPENSER - SOAP ANTISEPTIC
- EC EMERGENCY CALL
- FG FIXED GLASS
- GPO/1 GENERAL POWER OUTLET - SINGLE
- GPO/1 EP EMERGENCY POWER OUTLET - SINGLE
- GPO/C GENERAL POWER OUTLET - CLEANER
- LS LIGHT SWITCH
- MA MEDICAL AIR
- NC PATIENT/NURSE CALL
- NA NURSE ASSIST CALL
- O2 OXYGEN
- RCD RESIDUAL CURRENT DEVICE
- S SUCTION
- SBB SUCTION BOTTLE BRACKET
- SK4 FLOOR VINYL COVERED SKIRTING
- V1 VINYL FLOORING, STANDARD SLIP RESISTANT



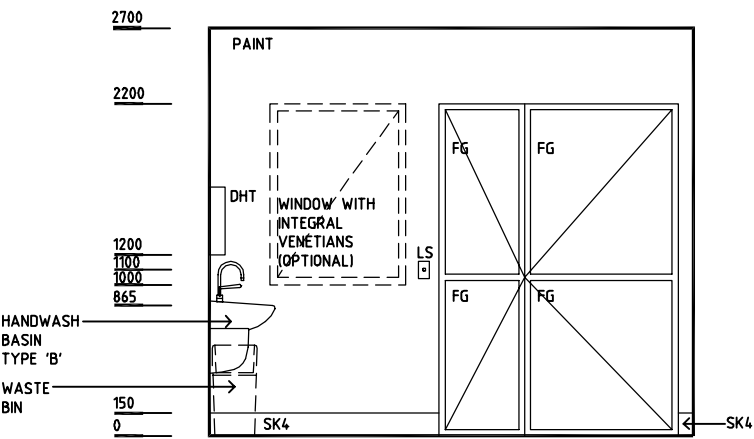
**PLAN**



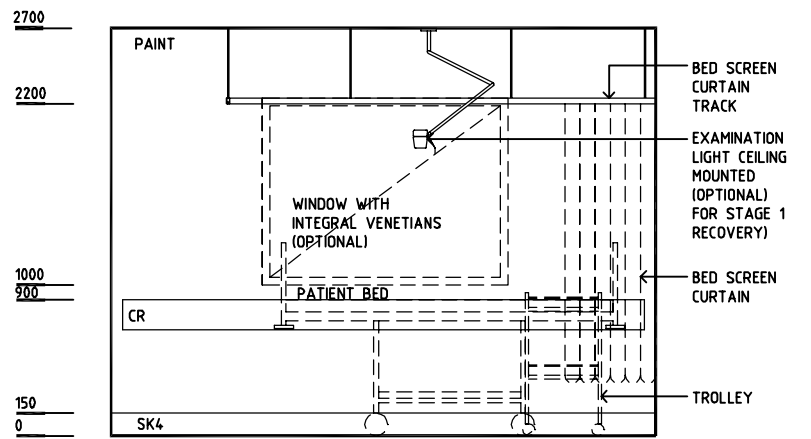
**ELEVATION 1**



**ELEVATION 2**



**ELEVATION 3**



**ELEVATION 4**

| REV | DESCRIPTION | DATE       | BY | REV | DESCRIPTION | DATE | BY | REV | DESCRIPTION | DATE | BY |
|-----|-------------|------------|----|-----|-------------|------|----|-----|-------------|------|----|
| 1   | FIRST ISSUE | 14.03.2014 | AA |     |             |      |    |     |             |      |    |



Sharjah Health Facility Guidelines at:  
www.healthdesign.com.au/shccfg  
Editable version of Standard Components on  
Health Facility Briefing System (HFBS) at:  
www.healthdesign.com.au  
Provided by TAHPI

| DESIGNED       | APPROVED | DATE             | SCALE(S)   | SHEET  |
|----------------|----------|------------------|------------|--------|
| CC             | DB       | 30.12.13         | 1:50 in A3 | 1 of 1 |
| CAD FILE NAME  |          | PAPER DRAWING ID |            | ISSUE  |
| PBTR-H-E-12-SJ |          | PBTR-H-E-12-SJ   |            | 1      |

This document is for advisory purpose only