

SHARJAH HEALTHCARE CITY STANDARD COMPONENTS

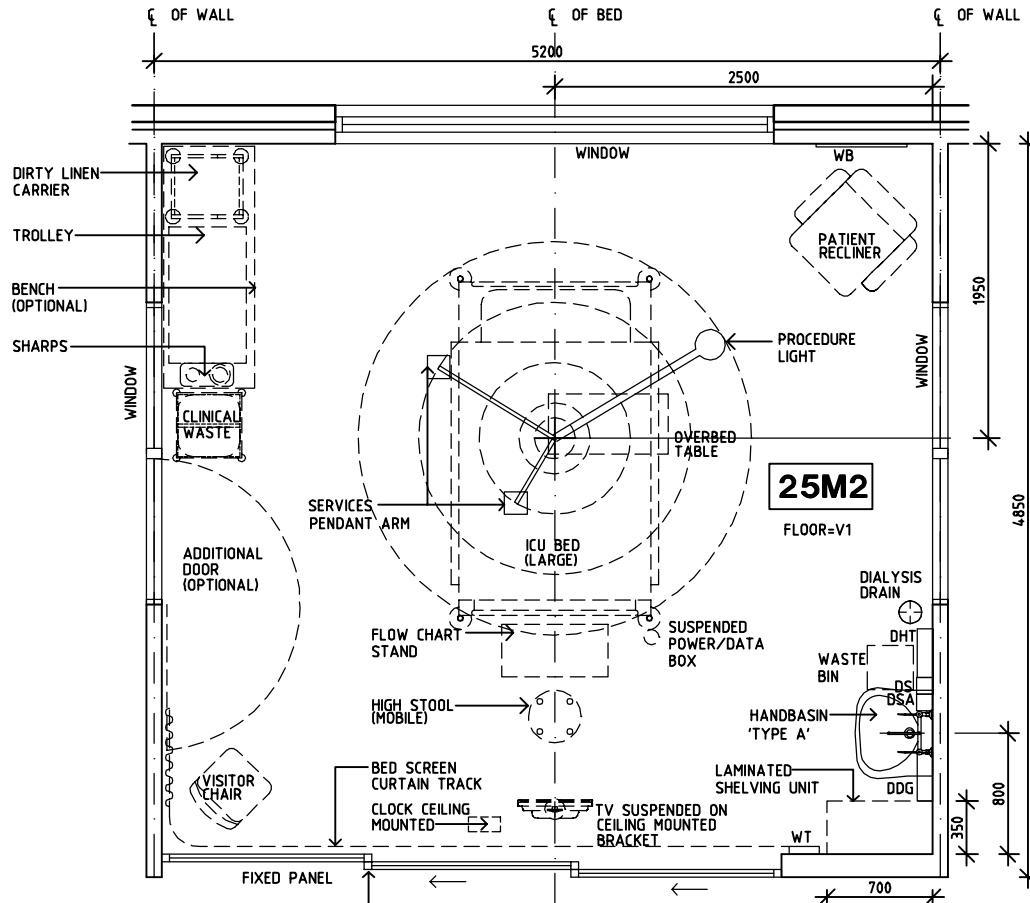
Room Layout Sheet

Room Name **Patient Bay - Critical (Enclosed), 25m2**

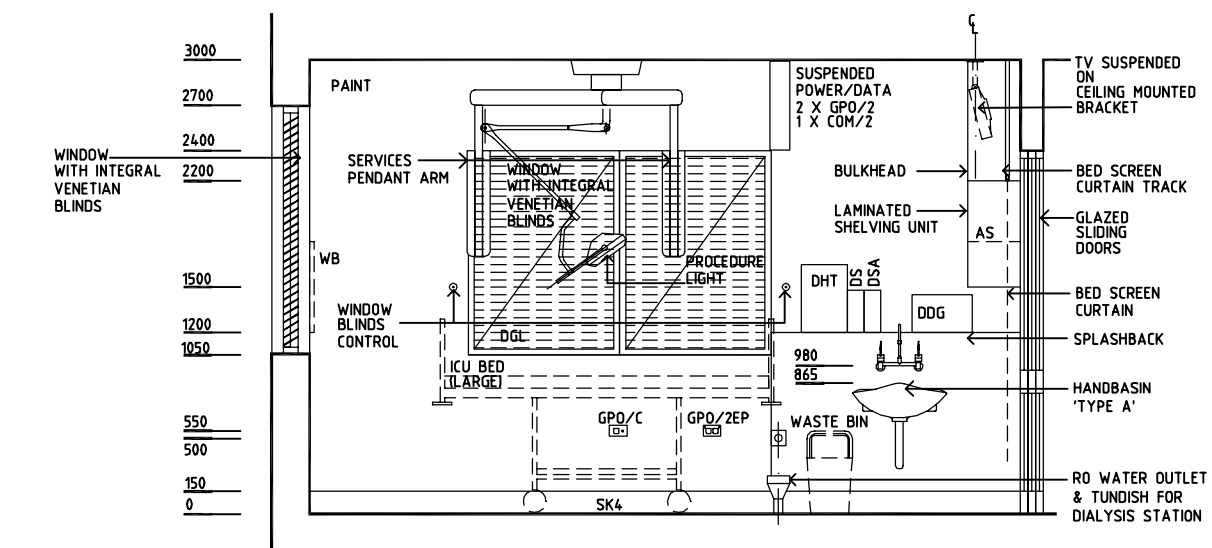
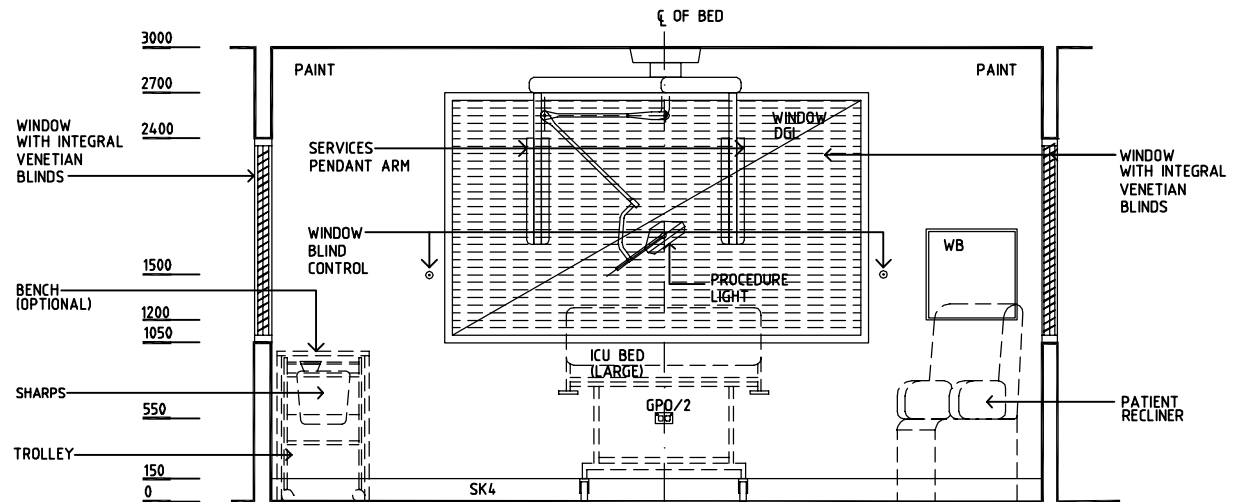
RLS Room Code **PBCE-25-SJ**
RDS Room Code **PBCE-25-SJ**

- COM/2 COMMUNICATION OUTLET - DOUBLE
- DDG DISPENSER - DISPOSABLE GLOVES
- DGL DOUBLE GLAZING
- DHT DISPENSER - HAND TOWEL
- DSA DISPENSER - SOAP ANTISEPTIC
- DS DISPENSER - SOAP
- GPO/1 GENERAL POWER OUTLET - SINGLE
- GPO/2 GENERAL POWER OUTLET - DOUBLE
- GPO/1 EP EMERGENCY POWER - SINGLE
- GPO/2 EP EMERGENCY POWER - DOUBLE
- GPO/C GENERAL POWER OUTLET - CLEANER'S
- LS/R LIGHT SWITCH - ROOM
- RCD RESIDUAL CURRENT DEVICE
- RO REVERSE OSMOSIS
- SG SAFETY GLAZING
- SK4 FLOOR VINYL COVERED SKIRTING
- V1 VINYL FLOORING STANDARD
- UPS UNINTERRUPTABLE POWER SUPPLY
- WB WHITEBOARD
- WT WALL TELEPHONE

- SERVICE PENDANTS :
- 1 x EMERGENCY CALL
 - 1 x NURSE ASSIST CALL
 - 1 x PATIENT/NURSE CALL & HANDSET
 - 12 x GPO/1
 - 12 x GPO/1 EP (2 ON UPS)
 - 4 x OXYGEN
 - 2 x MEDICAL AIR
 - 4 x SUCTION
 - 1 x MONITOR CONNECTION
 - 1 x COMMUNICATION OUTLET - DOUBLE
 - 1 x RCD



NOTE:
LARGE BED SHOWN
TO INDICATE CAPACITY
OF ROOM TO
ACCOMMODATE IT.



REV	DESCRIPTION	DATE	BY	REV	DESCRIPTION	DATE	BY	REV	DESCRIPTION	DATE	BY
1	FIRST ISSUE	14.03.2014	AA								



Sharjah Health Facility Guidelines at:
www.healthdesign.com.au/shccfg
Editable version of Standard Components on
Health Facility Briefing System (HFBS) at:
www.healthdesign.com.au
Provided by TAHPI

DESIGNED	APPROVED	DATE	SCALE(S)	SHEET
CC	DB	30.12.13	1:50 in A3	1 of 2
CAD FILE NAME		PAPER DRAWING ID		ISSUE
PBCE-25-SJ		PBCE-25-SJa		1

This document is for advisory purpose only

SHARJAH HEALTHCARE CITY STANDARD COMPONENTS

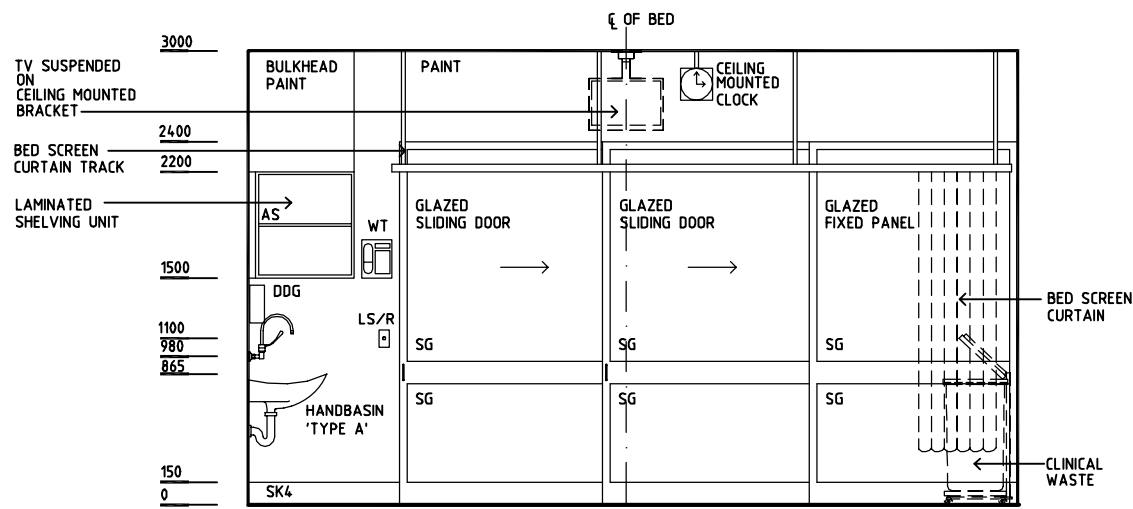
Room Layout Sheet

Room Name **Patient Bay - Critical (Enclosed), 25m2**

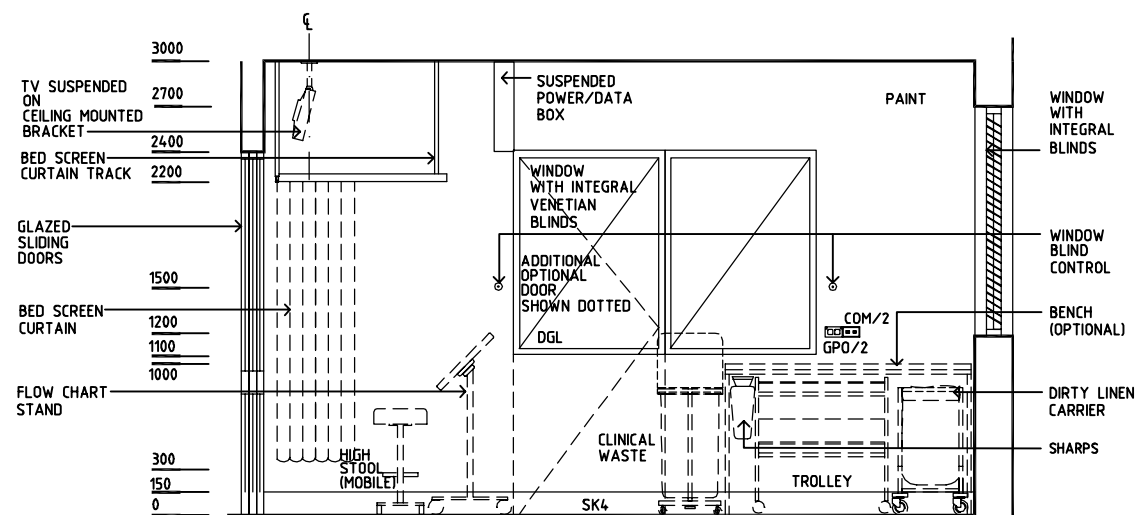
RLS Room Code **PBCE-25-SJ**
RDS Room Code **PBCE-25-SJ**

- COM/2 COMMUNICATION OUTLET - DOUBLE
- DDG DISPENSER - DISPOSABLE GLOVES
- DGL DOUBLE GLAZING
- DHT DISPENSER - HAND TOWEL
- DSA DISPENSER - SOAP ANTISEPTIC
- DS DISPENSER - SOAP
- GPO/1 GENERAL POWER OUTLET - SINGLE
- GPO/2 GENERAL POWER OUTLET - DOUBLE
- GPO/1 EP EMERGENCY POWER - SINGLE
- GPO/2 EP EMERGENCY POWER - DOUBLE
- GPO/C GENERAL POWER OUTLET - CLEANER'S
- LS/R LIGHT SWITCH - ROOM
- RCD RESIDUAL CURRENT DEVICE
- RO REVERSE OSMOSIS
- SG SAFETY GLAZING
- SK4 FLOOR VINYL COVERED SKIRTING
- V1 VINYL FLOORING STANDARD
- UPS UNINTERRUPTABLE POWER SUPPLY
- WB WHITEBOARD
- WT WALL TELEPHONE

- SERVICE PENDANTS :
- 1 x EMERGENCY CALL
 - 1 x NURSE ASSIST CALL
 - 1 x PATIENT/NURSE CALL & HANDSET
 - 12 x GPO/1
 - 12 x GPO/1 EP (2 ON UPS)
 - 4 x OXYGEN
 - 2 x MEDICAL AIR
 - 4 x SUCTION
 - 1 x MONITOR CONNECTION
 - 1 x COMMUNICATION OUTLET - DOUBLE
 - 1 x RCD




ELEVATION 3



ELEVATION 4

REV	DESCRIPTION	DATE	BY	REV	DESCRIPTION	DATE	BY	REV	DESCRIPTION	DATE	BY
1	FIRST ISSUE	14.03.2014	AA								

 SHCC Guidelines	DESIGNED CC APPROVED DB		DATE 30.12.13	SCALE(S) 1:50 in A3	SHEET 2 of 2
	CAD FILE NAME PBCE-25-SJ		PAPER DRAWING ID PBCE-25-SJb		ISSUE 1
	Sharjah Health Facility Guidelines at: www.healthdesign.com.au/shcc/hfg Editable version of Standard Components on Health Facility Briefing System (HFBS) at: www.healthdesign.com.au Provided by TAHPI				

This document is for advisory purpose only