

# SHARJAH HEALTHCARE CITY STANDARD COMPONENTS

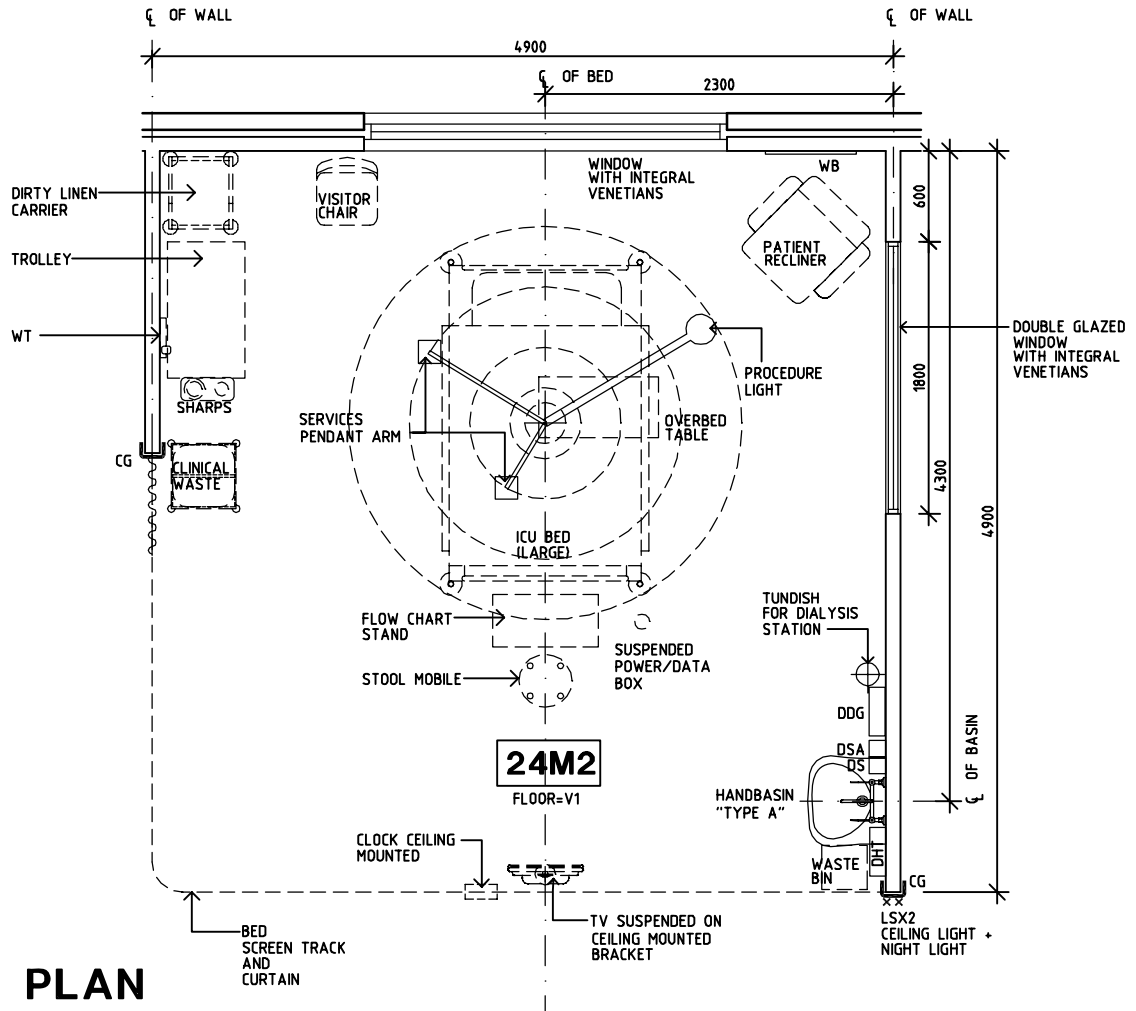
Room Layout Sheet

Room Name **Patient Bay - Critical, 24m2**

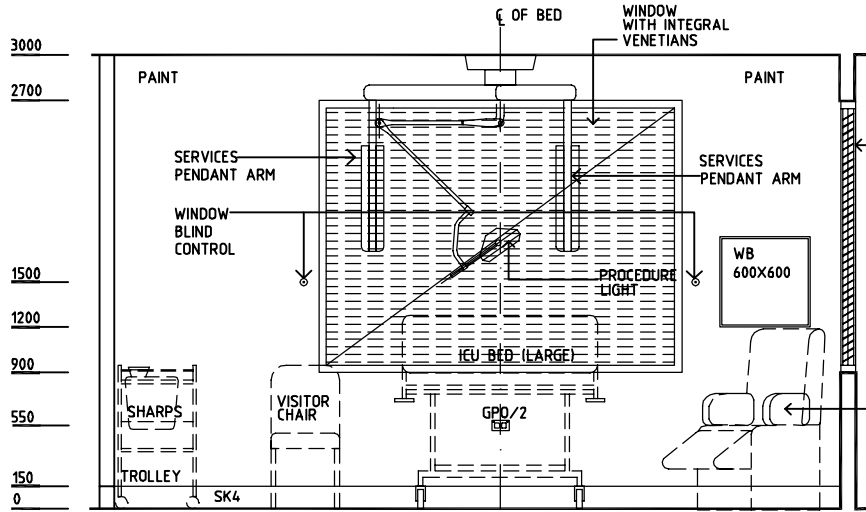
RLS Room Code **PBC-24-SJ**  
RDS Room Code **PBC-24-SJ**

- COM/2 COMMUNICATION OUTLET - DOUBLE
- CG CORNER GUARD
- CP CHROME PLATED
- DDG DISPENSER - DISPOSABLE GLOVES
- DGL DOUBLE GLAZING
- DHT DISPENSER - HAND TOWEL
- DSA DISPENSER - SOAP ANTISEPTIC
- DS DISPENSER - SOAP
- GPO/1 GENERAL POWER OUTLET - SINGLE
- GPO/1 EP EMERGENCY POWER - SINGLE
- GPO/2 EP EMERGENCY POWER - DOUBLE
- GPO/2 GENERAL PURPOSE OUTLET - DOUBLE
- GPO/C GENERAL PURPOSE OUTLET - CLEANER'S
- LS LIGHT SWITCH
- RCD RESIDUAL CURRENT DEVICE
- RO REVERSE OSMOSIS
- SK4 FLOOR VINYL COVERED SKIRTING
- V1 VINYL FLOORING, STANDARD SLIP RESISTANT
- WB WHITEBOARD

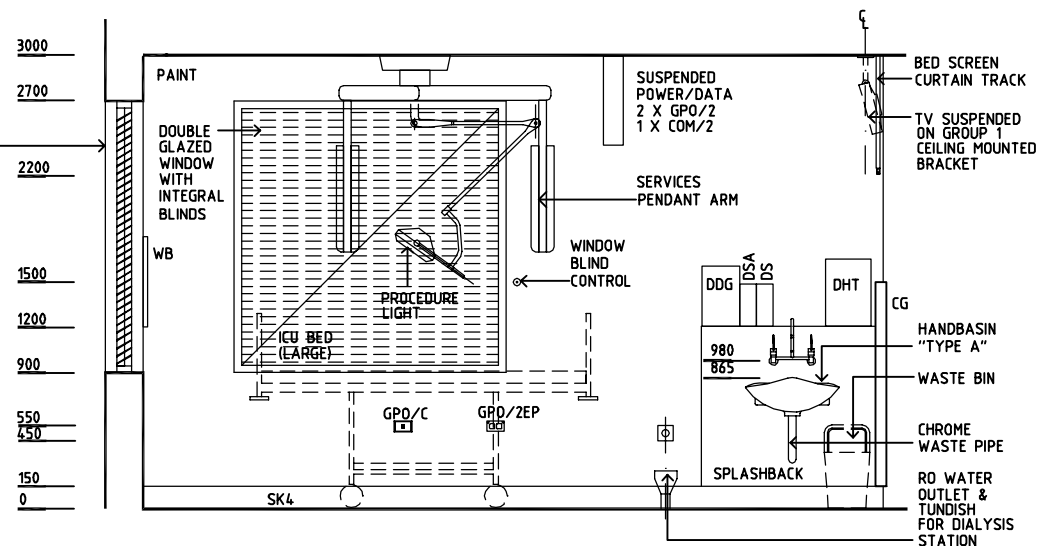
- SERVICE PENDANTS:
- 1 x EMERGENCY CALL
  - 1 x NURSE ASSIST CALL
  - 1 x PATIENT/NURSE CALL & HANDSET
  - 12 x GPO/1
  - 12 x GPO/1 EP
  - 4 x OXYGEN
  - 2 x MEDICAL AIR
  - 4 x SUCTION
  - 1 x MONITOR CONNECTION
  - 1 x COM/2
  - 1 x RCD



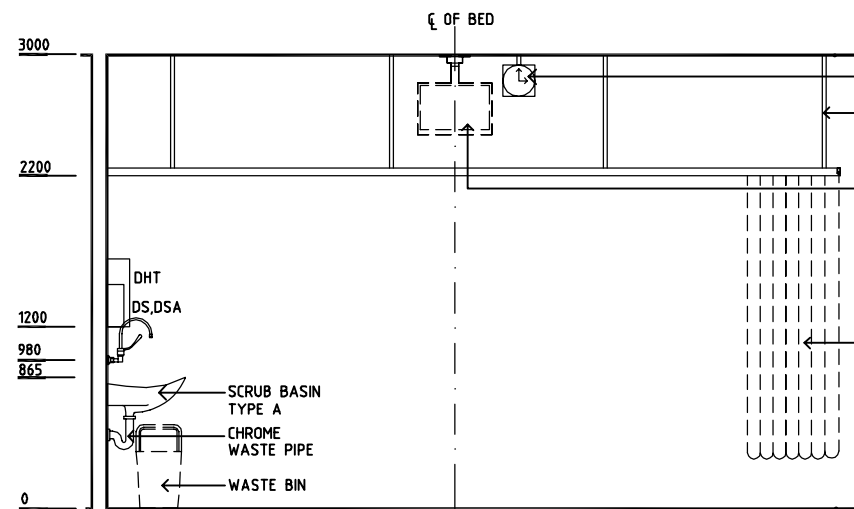
**PLAN**



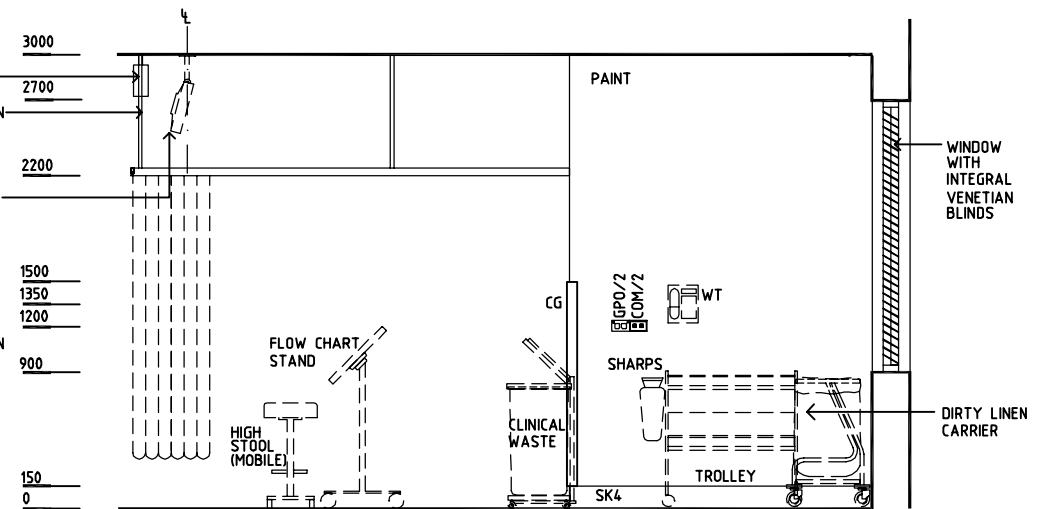
**ELEVATION 1**



**ELEVATION 2**



**ELEVATION 3**



**ELEVATION 4**

REV	DESCRIPTION	DATE	BY	REV	DESCRIPTION	DATE	BY	REV	DESCRIPTION	DATE	BY
1	FIRST ISSUE	14.03.2014	AA								



Sharjah Health Facility Guidelines at:  
www.healthdesign.com.au/shccfg  
Editable version of Standard Components on  
Health Facility Briefing System (HFBS) at:  
www.healthdesign.com.au  
Provided by TAHPI

DESIGNED	APPROVED	DATE	SCALE(S)	SHEET
CC	DB	30.12.13	1:50 in A3	1 of 1
CAD FILE NAME		PAPER DRAWING ID		ISSUE
PBC-24-SJ		PBC-24-SJ		1

This document is for advisory purpose only