

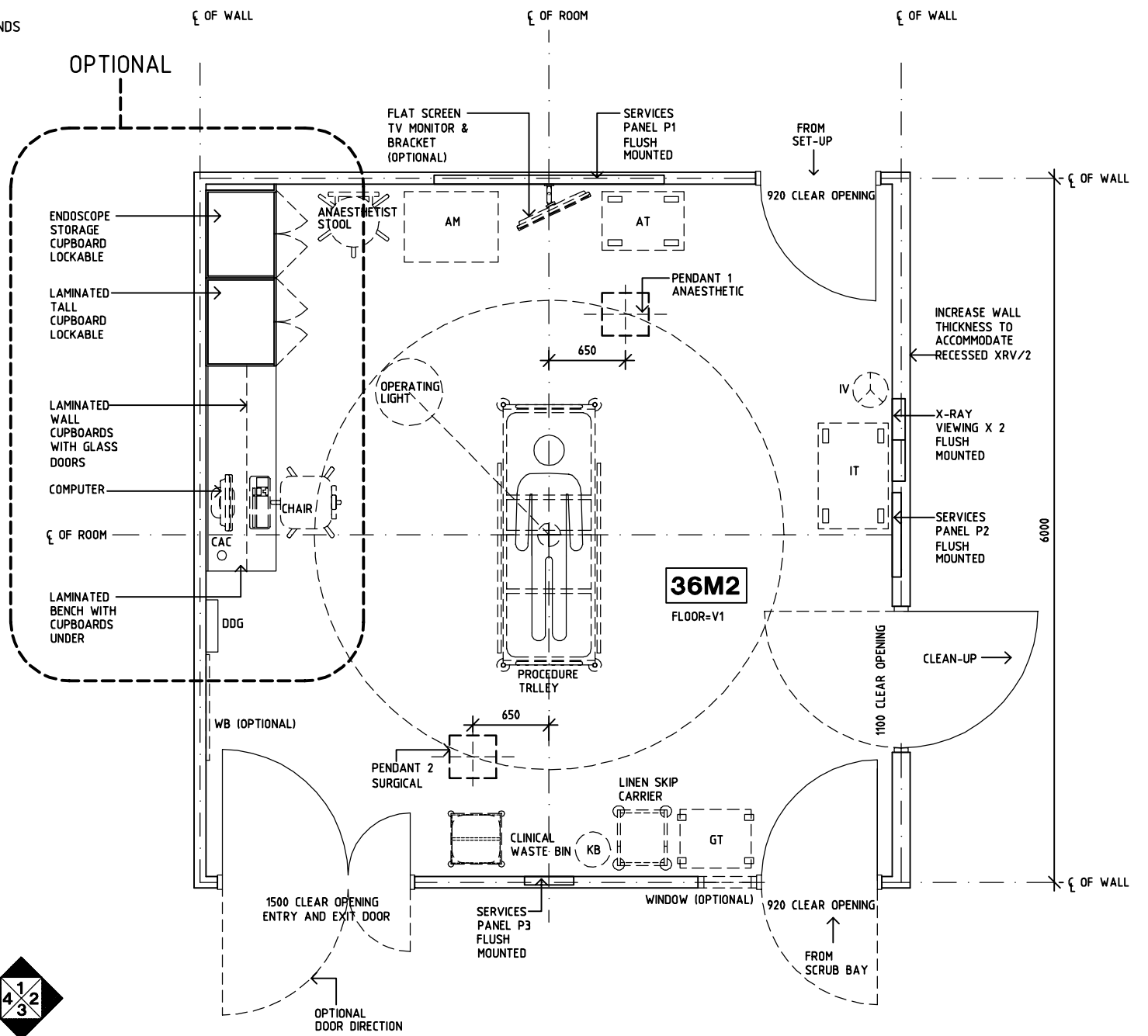
SHARJAH HEALTHCARE CITY STANDARD COMPONENTS

Room Layout Sheet

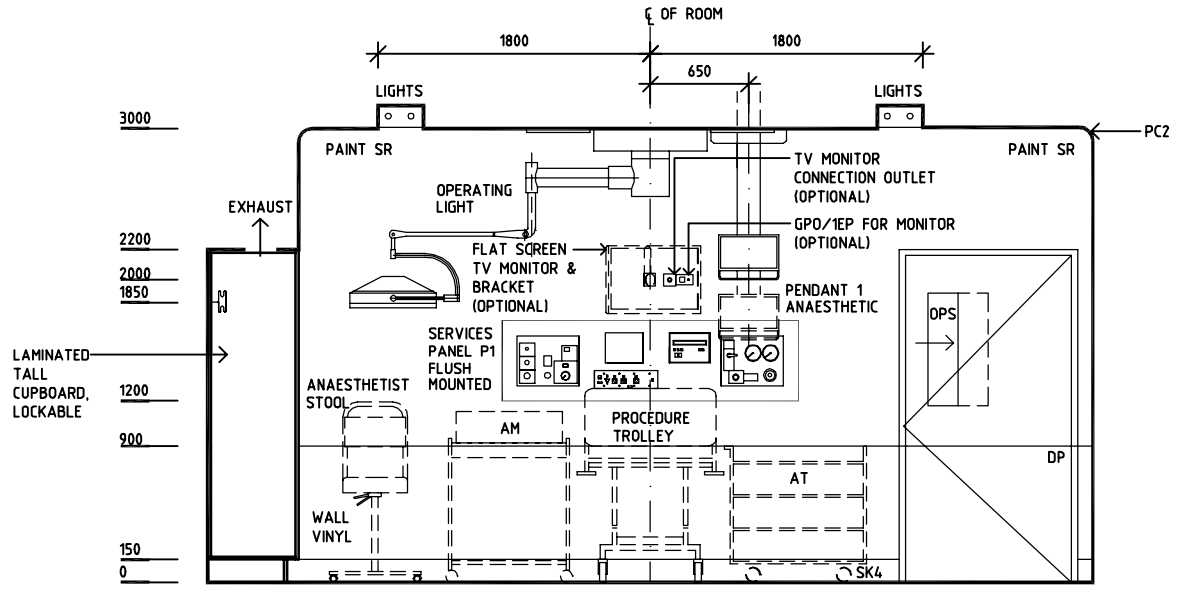
Room Name **Operating Room - Minor**

RLS Room Code **ORMS-SJ**
RDS Room Code **ORMS-SJ**

- AM ANAESTHETIC MACHINE
 - AT ANAESTHETIC TROLLEY
 - AS ADJUSTABLE SHELF
 - COM/2 COMMUNICATION OUTLET - DOUBLE
 - CAC CABLE ACCESS CAP
 - DGL DOUBLE GLAZED WITH INTEGRAL VENETIAN BLINDS
 - DDG DISPENSER - DISPOSABLE GLOVE
 - DP DOOR AND FRAME PROTECTION
 - ELCB'S EARTH LEAKAGE CIRCUIT BREAKERS
 - EPJ EQUIPOTENTIAL JUNCTION BOX
 - GPO/1 GENERAL POWER OUTLET - SINGLE
 - GPO/1 EP EMERGENCY POWER - SINGLE
 - GPO/2 GENERAL POWER OUTLET - DOUBLE
 - GPO/C GENERAL POWER OUTLET - CLEANER'S
 - GT GOWNING TROLLEY
 - IV INTRAVENOUS STAND
 - IT INSTRUMENT TROLLEY
 - KB KICK BUCKET
 - OPS OBSERVATION PANEL WITH SLIDING PANEL
 - PC2 PLASTERBOARD CORNICE, FLUSH COVERED
 - RCD RESIDUAL CURRENT DEVICE
 - SK4 FLOOR VINYL COVERED SKIRTING
 - SR SCRUB RESISTANT
 - TV TELEVISION
 - V1 VINYL FLOORING, STANDARD SLIP RESISTANT
 - WB WHITEBOARD
-
- SERVICES PANEL P1 GPO/1 EP X 4
RCD
SURGICAL TOOL AIR & CONTROL PANEL
TOURNIQUET AIR AND CONTROL PANEL
GAS ALARM MONITOR
EPJ PANEL
 - SERVICES PANEL P2 CLOCKS CONTROLS
GPO/1 X 2
RCD
LIGHT SWITCHES
OPERATING LIGHT CONTROLS
 - SERVICES PANEL P3 NURSE/STAFF ASSIST CALL
PORTER CALL (OPTIONAL)
EMERGENCY CALL
LASER-IN-USE INDICATOR
GPO/1 X 1
RCD
 - PENDANT 1 ANAESTHETIC COM/2
GPO/1 X 4
GPO/1 EP X 4
OXYGEN x 2
RCD
NITROUS OXIDE x 1
MEDICAL AIR x 1
SUCTION X 2
SCAVENGE x 1
 - PENDANT 2 SURGICAL COM/2
GPO/1 X 4
GPO/1 EP X 4
RCD
OXYGEN x 2
NITROUS OXIDE x 1
MEDICAL AIR x 1
SUCTION X 2
SCAVENGE x 1



PLAN



ELEVATION 1

| REV | DESCRIPTION | DATE | BY | REV | DESCRIPTION | DATE | BY | REV | DESCRIPTION | DATE | BY |
|-----|-------------|------------|----|-----|-------------|------|----|-----|-------------|------|----|
| 1 | FIRST ISSUE | 14.03.2014 | AA | | | | | | | | |



Sharjah Health Facility Guidelines at:
www.healthdesign.com.au/shccfg
Editable version of Standard Components on
Health Facility Briefing System (HFBS) at:
www.healthdesign.com.au
Provided by TAHPI

| DESIGNED | APPROVED | DATE | SCALE(S) | SHEET |
|---------------|----------|------------------|------------|--------|
| CC | DB | 30.12.13 | 1:50 in A3 | 1 of 2 |
| CAD FILE NAME | | PAPER DRAWING ID | | ISSUE |
| ORMS-SJ | | ORMS-SJa | | 1 |

This document is for advisory purpose only

SHARJAH HEALTHCARE CITY STANDARD COMPONENTS

Room Layout Sheet

Room Name **Operating Room - Minor**

RLS Room Code **ORMS-SJ**
RDS Room Code **ORMS-SJ**

- AM ANAESTHETIC MACHINE
- AT ANAESTHETIC TROLLEY
- AS ADJUSTABLE SHELF
- COM/2 COMMUNICATION OUTLET - DOUBLE
- CAC CABLE ACCESS CAP
- DGL DOUBLE GLAZED WITH INTEGRAL VENETIAN BLINDS
- DDG DISPENSER - DISPOSABLE GLOVE
- DP DOOR AND FRAME PROTECTION
- ELCB'S EARTH LEAKAGE CIRCUIT BREAKERS
- EPJ EQUIPOTENTIAL JUNCTION BOX
- GPO/1 GENERAL POWER OUTLET - SINGLE
- GPO/1 EP EMERGENCY POWER - SINGLE
- GPO/2 GENERAL POWER OUTLET - DOUBLE
- GPO/C GENERAL POWER OUTLET - CLEANER'S
- GT GOWNING TROLLEY
- IV INTRAVENOUS STAND
- IT INSTRUMENT TROLLEY
- KB KICK BUCKET
- OPS OBSERVATION PANEL WITH SLIDING PANEL
- PC2 PLASTERBOARD CORNICE, FLUSH COVERED
- RCD RESIDUAL CURRENT DEVICE
- SK4 FLOOR VINYL COVERED SKIRTING
- SR SCRUB RESISTANT
- TV TELEVISION
- V1 VINYL FLOORING, STANDARD SLIP RESISTANT
- WB WHITEBOARD

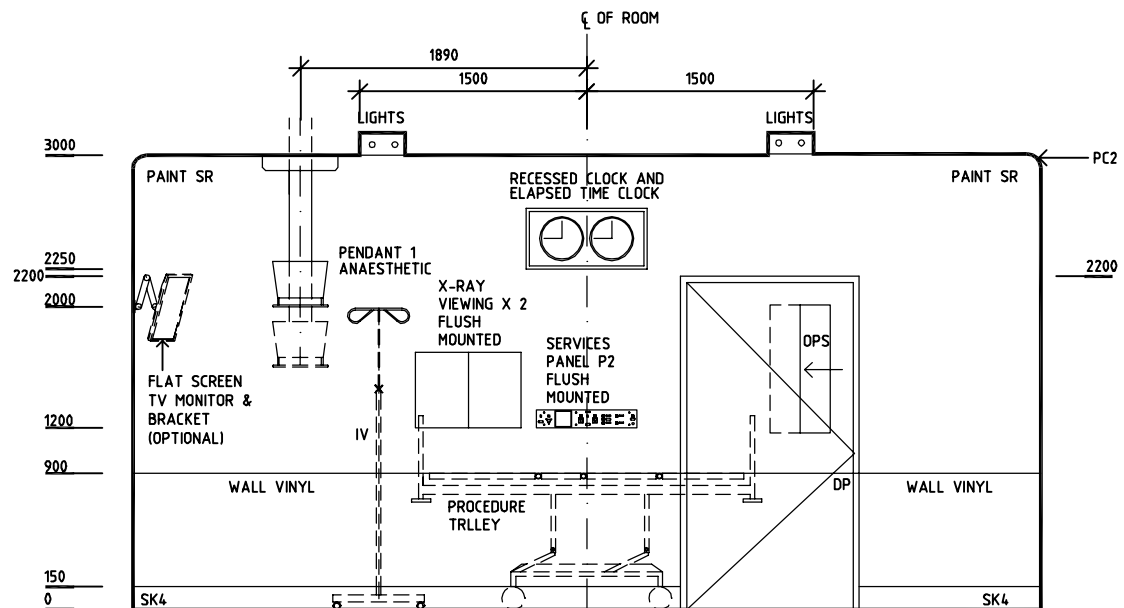
- SERVICES PANEL P1
- GPO/1 EP X 4
 - RCD
 - SURGICAL TOOL AIR & CONTROL PANEL
 - TOURNIQUET AIR AND CONTROL PANEL
 - GAS ALARM MONITOR
 - EPJ PANEL

- SERVICES PANEL P2
- CLOCKS CONTROLS
 - GPO/1 X 2
 - RCD
 - LIGHT SWITCHES
 - OPERATING LIGHT CONTROLS

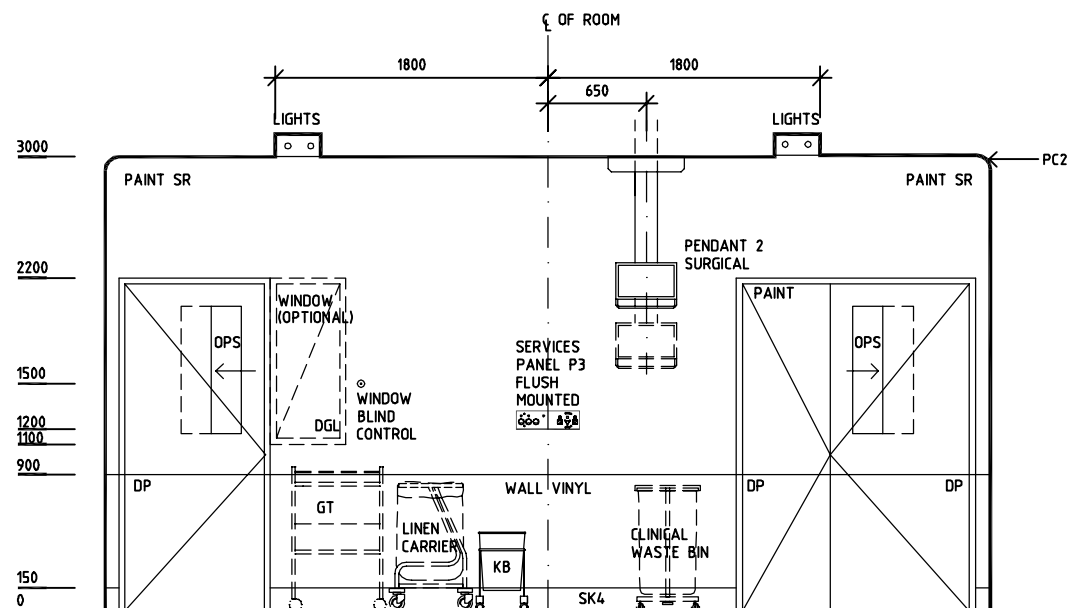
- SERVICES PANEL P3
- NURSE/STAFF ASSIST CALL
 - PORTER CALL (OPTIONAL)
 - EMERGENCY CALL
 - LASER-IN-USE INDICATOR
 - GPO/1 X 1
 - RCD

- PENDANT 1 ANAESTHETIC
- COM/2
 - GPO/1 X 4
 - GPO/1 EP X 4
 - OXYGEN x 2
 - RCD
 - NITROUS OXIDE x 1
 - MEDICAL AIR x 1
 - SUCTION X 2
 - SCAVENGE x 1

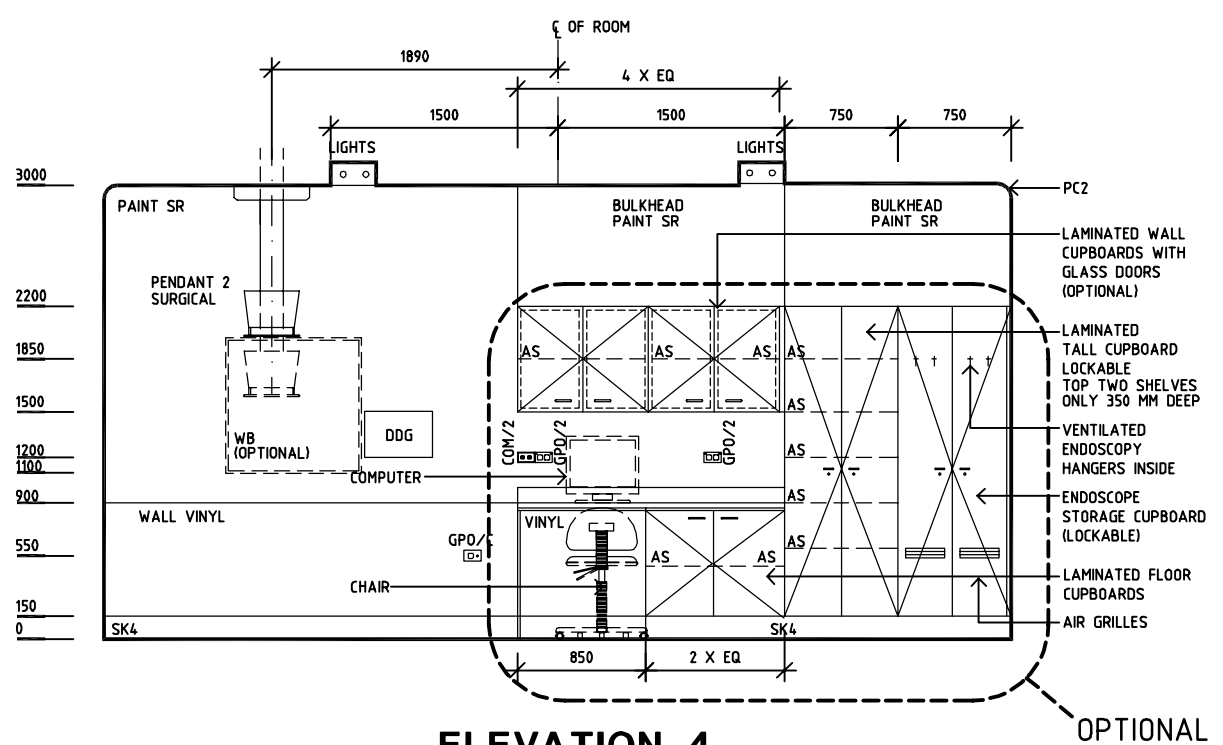
- PENDANT 2 SURGICAL
- COM/2
 - GPO/1 X 4
 - GPO/1 EP X 4
 - RCD
 - OXYGEN x 2
 - NITROUS OXIDE x 1
 - MEDICAL AIR x 1
 - SUCTION X 2
 - SCAVENGE x 1



ELEVATION 2



ELEVATION 3



ELEVATION 4

OPTIONAL

| REV | DESCRIPTION | DATE | BY | REV | DESCRIPTION | DATE | BY | REV | DESCRIPTION | DATE | BY |
|-----|-------------|------------|----|-----|-------------|------|----|-----|-------------|------|----|
| 1 | FIRST ISSUE | 14.03.2014 | AA | | | | | | | | |



Sharjah Health Facility Guidelines at:
www.healthdesign.com.au/shccfg
Editable version of Standard Components on
Health Facility Briefing System (HFBS) at:
www.healthdesign.com.au
Provided by TAHPI

| DESIGNED | APPROVED | DATE | SCALE(S) | SHEET |
|---------------|----------|------------------|------------|--------|
| CC | DB | 30.12.13 | 1:50 in A3 | 2 of 2 |
| CAD FILE NAME | | PAPER DRAWING ID | | ISSUE |
| ORMS-SJ | | ORMS-SJb | | 1 |

This document is for advisory purpose only