

SHARJAH HEALTHCARE CITY STANDARD COMPONENTS

Room Layout Sheet

Room Name **Operating Room - Vascular / Cardiac - Imaging**

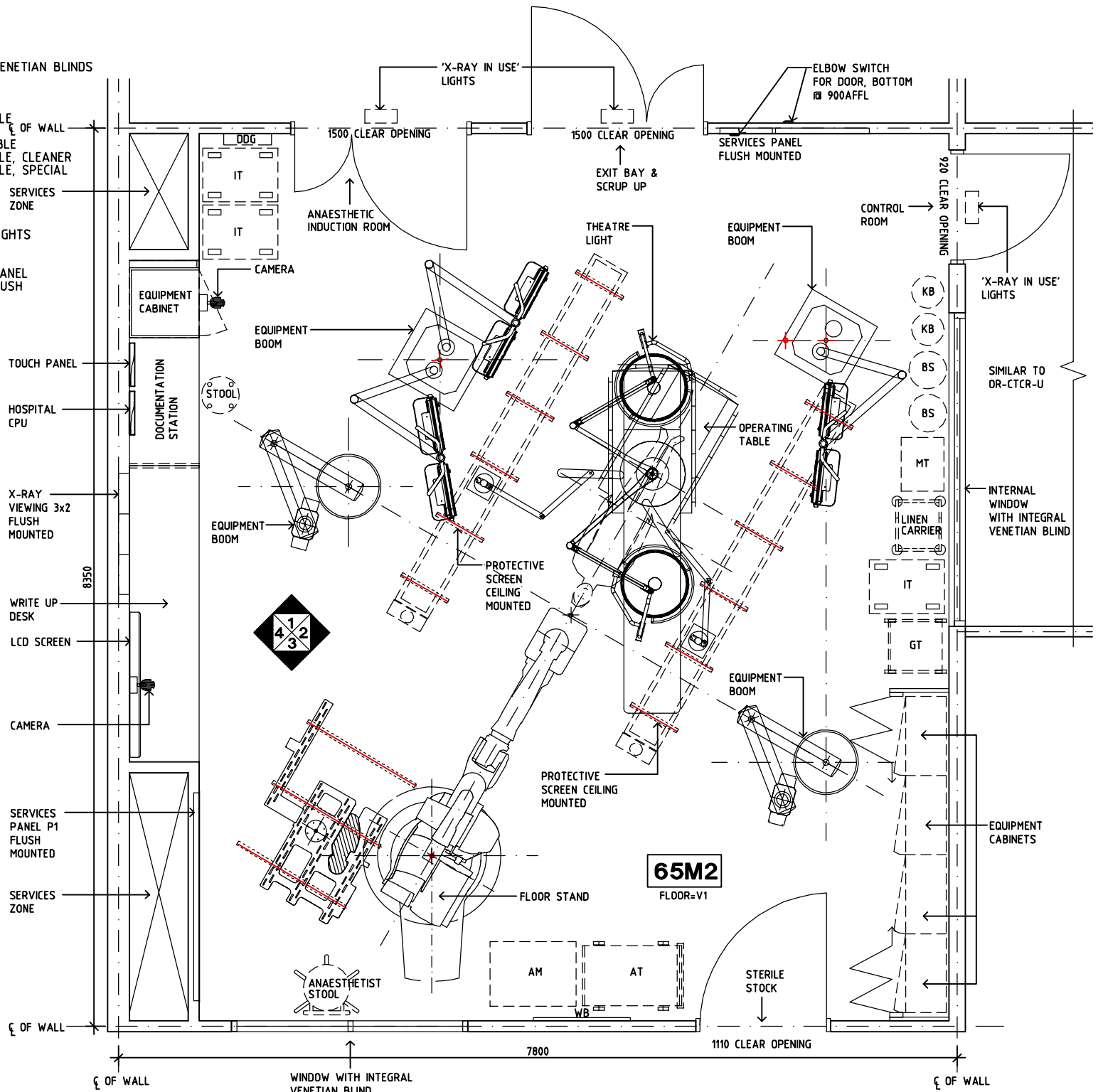
RLS Room Code **OR-VC-SJ**
RDS Room Code **OR-VC-SJ**

- AM
- AT
- BS
- COM/2
- DIA
- DGL
- DDG
- DP
- EPJ
- GPO/1
- GPO/1 EP
- GPO/2
- GPO/C
- GPO/S
- GT
- IT
- IV
- KB
- LS/DD
- LS/R
- MT
- OPS
- PC2
- RA
- RCD
- SK4
- SR
- V1
- WB

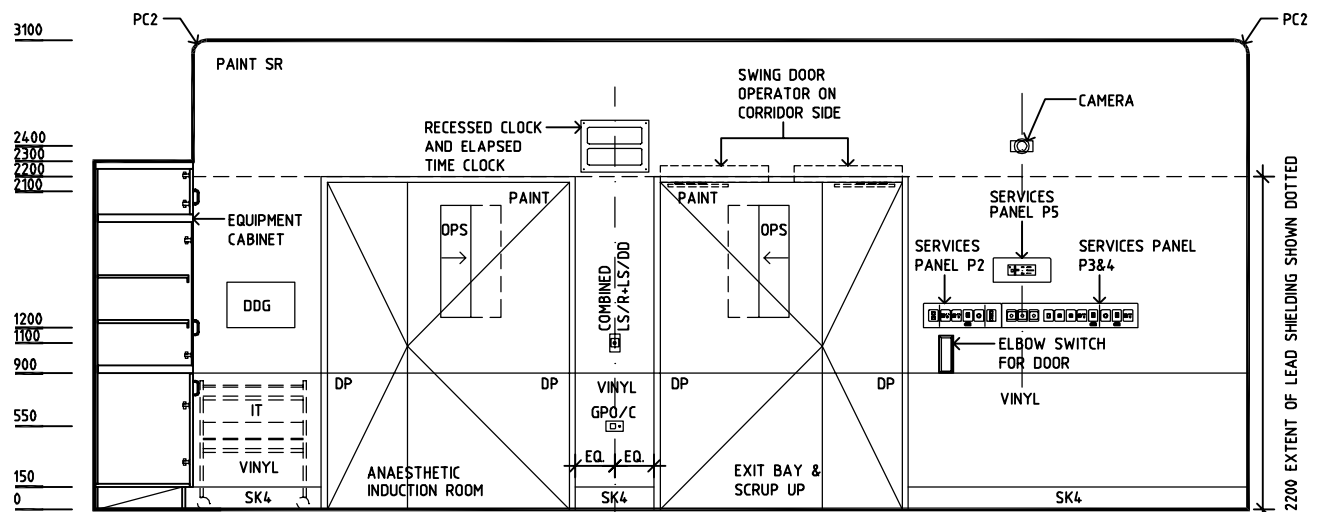
- ANAESTHETIC MACHINE
- ANAESTHETIC TROLLEY
- BOWL STAND
- COMMUNICATION OUTLET - DOUBLE
- DIATHERMY
- DOUBLE GLAZED WITH INTEGRAL VENETIAN BLINDS
- DISPENSER - DISPOSABLE GLOVE
- DOOR AND FRAME PROTECTION
- EQUIPOTENTIAL JUNCTION BOX
- GENERAL PURPOSE OUTLET - SINGLE
- EMERGENCY POWER - SINGLE
- GENERAL PURPOSE OUTLET - DOUBLE
- GENERAL PURPOSE OUTLET - SINGLE, CLEANER
- GENERAL PURPOSE OUTLET - SINGLE, SPECIAL
- GOWNING TROLLEY
- INSTRUMENT TROLLEY
- INTRAVENOUS STAND
- KICK BUCKET
- LIGHT SWITCH+DIMMER FOR DOWNLIGHTS
- LIGHT SWITCH -ROOM
- MAYO TABLE
- OBSERVATION PANEL W/SLIDING PANEL
- 90 mm PLASTERBOARD CORNICE-FLUSH
- RETURN AIR
- RESIDUAL CURRENT DEVICE
- FLOOR VINYL COVERED SKIRTING
- SCRUB RESISTANT
- VINYL FLOORING, STANDARD
- WHITEBOARD

- SERVICES PANEL P1**
GPO/1 EP x 3
RCD
SURGICAL TOOL AIR CONTROL PANEL
TOURNIQUET AIR & CONTROL PANEL
GAS ALARM MONITOR
EPJ PANEL
- SERVICES PANEL P2**
CLOCKS CONTROLS
GPO/1 x 2
RCD
LIGHT SWITCHES
- SERVICES PANEL P3**
GPO/1 x 1
GPO 20AMP (OPTIONAL)
RCD
RCD XRAY IN USE SWITCH
- SERVICES PANEL P4**
NURSE/STAFF ASSIST CALL
PORTER CALL
EMERGENCY CALL
LASER-IN-USE INDICATOR SWITCH
X-RAY-IN-USE INDICATOR SWITCH
3RD SERVICES BOOM MOTOR BUTTON
- SERVICES PANEL P5**
LINE ISOLATION MONITOR
OVERLOAD MONITOR
- SERVICES BOOM**
AUDIO/VIDEO x 1
BOOM MOTOR POWER 10A x 1
COM/2 x 1
EARTH STUD x 2
GPO/2 EP x 3
GPO/2 UPS x 3
GPO/S UPS 15A x 1
GPO/S UPS 20A x 1
MEDICAL AIR x 1
NITROUS OXIDE x 1
OXYGEN x 2
SCAVENGE x 1
SUCTION x 2
TOOL AIR x 1
- ANAESTHESIA BOOM**
AUDIO/VIDEO x 1
BOOM MOTOR POWER 10A x 1
COM/2 x 1
EARTH STUD x 2
GPO/2 EP x 3
GPO/2 UPS x 3
GPO/S UPS 15A x 1
GPO/S UPS 20A x 1
MEDICAL AIR x 1
NITROUS OXIDE x 1
OXYGEN x 2
SCAVENGE x 1
SUCTION x 2

- DOCUMENTATION STATION SERVICES:**
- A (x5) GPO/2 EP-RCD
 - B (x4) GPO/2 UPS-RCD
 - C (x1) ANALOGUE TELEPHONE COM/1
 - D (x3) HOSPITAL LAN COM/1
 - F (x1) AV INPUT PLATE
- NOTE:**
PROVIDE 1 x UNREGULATED TOOL AIR TO EACH PENDANT FOR PENDANT PNEUMATIC BRAKE



PLAN



ELEVATION 1

REV	DESCRIPTION	DATE	BY	REV	DESCRIPTION	DATE	BY	REV	DESCRIPTION	DATE	BY
1	FIRST ISSUE	14.03.2014	AA								



Sharjah Health Facility Guidelines at:
www.healthdesign.com.au/shccfg
Editable version of Standard Components on
Health Facility Briefing System (HFBS) at:
www.healthdesign.com.au
Provided by TAHPI

DESIGNED	APPROVED	DATE	SCALE(S)	SHEET
CC	DB	30.12.13	1:50 in A3	1 of 2
CAD FILE NAME		PAPER DRAWING ID		ISSUE
OR-VC-SJ		OR-VC-SJa		1

This document is for advisory purpose only

SHARJAH HEALTHCARE CITY STANDARD COMPONENTS

Room Layout Sheet

Room Name **Operating Room - Vascular / Cardiac - Imaging**

RLS Room Code **OR-VC-SJ**
RDS Room Code **OR-VC-SJ**

- AM ANAESTHETIC MACHINE
- AT ANAESTHETIC TROLLEY
- BS BOWL STAND
- COM/2 COMMUNICATION OUTLET - DOUBLE
- DIA DIATHERMY
- DGL DOUBLE GLAZED WITH INTEGRAL VENETIAN BLINDS
- DDG DISPENSER - DISPOSABLE GLOVE
- DP DOOR AND FRAME PROTECTION
- EPJ EQUIPOTENTIAL JUNCTION BOX
- GPO/1 GENERAL PURPOSE OUTLET - SINGLE
- GPO/1 EP EMERGENCY POWER - SINGLE
- GPO/2 GENERAL PURPOSE OUTLET - DOUBLE
- GPO/C GENERAL PURPOSE OUTLET - SINGLE, CLEANER
- GPO/S GENERAL PURPOSE OUTLET - SINGLE, SPECIAL
- GT GOWNING TROLLEY
- IT INSTRUMENT TROLLEY
- IV INTRAVENOUS STAND
- KB KICK BUCKET
- LS/DD LIGHT SWITCH + DIMMER FOR DOWNLIGHTS
- LS/R LIGHT SWITCH - ROOM
- MT MAYO TABLE
- OPS OBSERVATION PANEL WITH SLIDING PANEL
- PC2 90 mm PLASTERBOARD CORNICE - FLUSH
- RA RETURN AIR
- RCD RESIDUAL CURRENT DEVICE
- SK4 FLOOR VINYL COVERED SKIRTING
- SR SCRUB RESISTANT
- V1 VINYL FLOORING, STANDARD
- WB WHITEBOARD

- SERVICES PANEL P1**
- GPO/1 EP x 3
 - RCD
 - SURGICAL TOOL AIR CONTROL PANEL
 - TOURNIQUET AIR & CONTROL PANEL
 - GAS ALARM MONITOR
 - EPJ PANEL

- SERVICES PANEL P2**
- CLOCKS CONTROLS
 - GPO/1 x 2
 - RCD
 - LIGHT SWITCHES

- SERVICES PANEL P3**
- GPO/1 x 1
 - GPO 20AMP (OPTIONAL)
 - RCD
 - RCD XRAY IN USE SWITCH

- SERVICES PANEL P4**
- NURSE/STAFF ASSIST CALL
 - PORTER CALL
 - EMERGENCY CALL
 - LASER-IN-USE INDICATOR SWITCH
 - X-RAY-IN-USE INDICATOR SWITCH
 - 3RD SERVICES BOOM MOTOR BUTTON

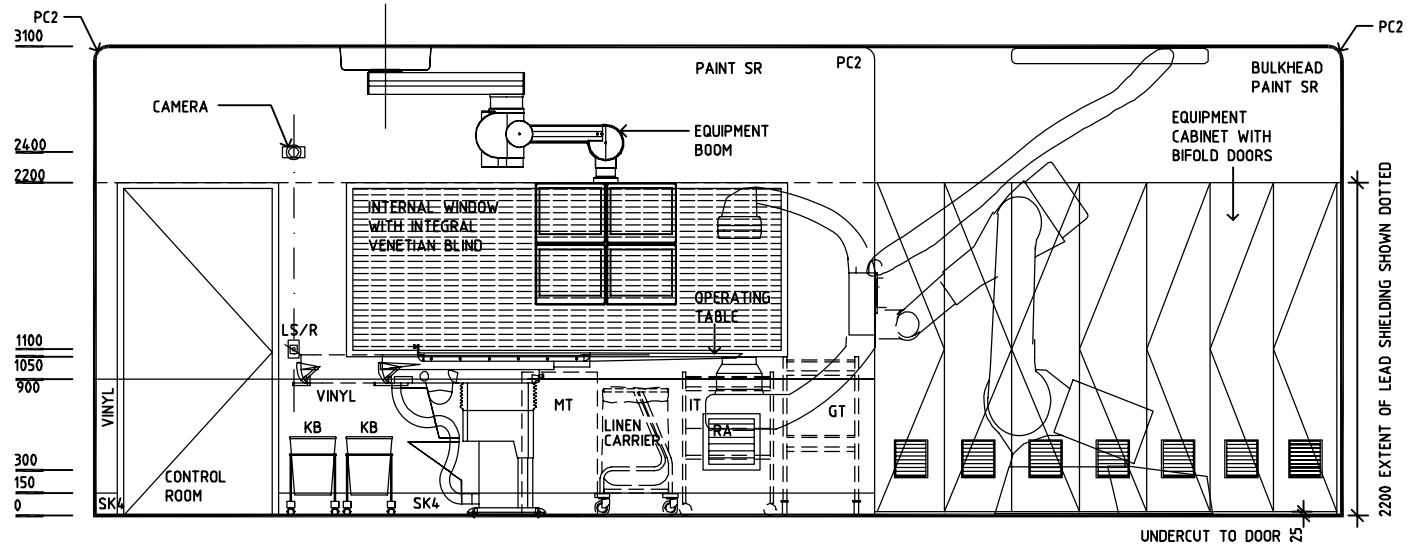
- SERVICES PANEL P5**
- LINE ISOLATION MONITOR
 - OVERLOAD MONITOR

- SERVICES BOOM**
- AUDIO/VIDEO x 1
 - BOOM MOTOR POWER 10A x 1
 - COM/2 x 1
 - EARTH STUD x 2
 - GPO/2 EP x 3
 - GPO/2 UPS x 3
 - GPO/S UPS 15A x 1
 - GPO/S UPS 20A x 1
 - MEDICAL AIR x 1
 - NITROUS OXIDE x 1
 - OXYGEN x 2
 - SCAVENGE x 1
 - SUCTION x 2
 - TOOL AIR x 1

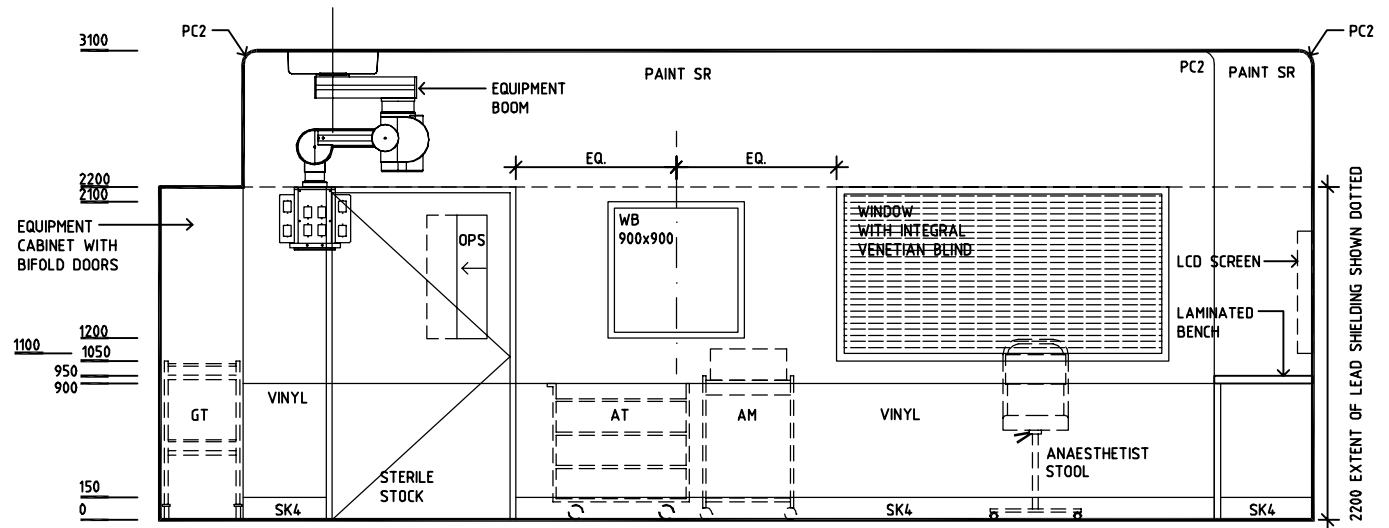
- ANAESTHESIA BOOM**
- AUDIO/VIDEO x 1
 - BOOM MOTOR POWER 10A x 1
 - COM/2 x 1
 - EARTH STUD x 2
 - GPO/2 EP x 3
 - GPO/2 UPS x 3
 - GPO/S UPS 15A x 1
 - GPO/S UPS 20A x 1
 - MEDICAL AIR x 1
 - NITROUS OXIDE x 1
 - OXYGEN x 2
 - SCAVENGE x 1
 - SUCTION x 2

- DOCUMENTATION STATION SERVICES:**
- A (x5) GPO/2 EP-RCD
 - B (x4) GPO/2 UPS-RCD
 - C (x1) ANALOGUE TELEPHONE COM/1
 - D (x3) HOSPITAL LAN COM/1
 - F (x1) AV INPUT PLATE

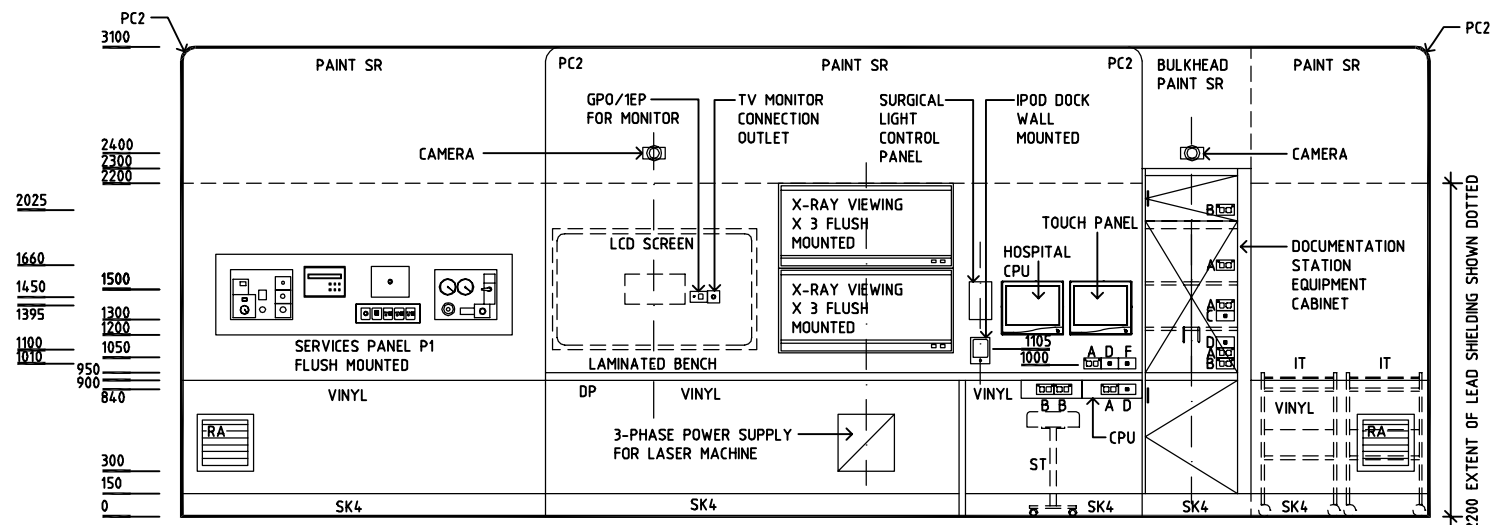
NOTE:
PROVIDE 1 x UNREGULATED TOOL AIR TO EACH PENDANT FOR PENDANT PNEUMATIC BRAKE



ELEVATION 2



ELEVATION 3



ELEVATION 4

REV	DESCRIPTION	DATE	BY	REV	DESCRIPTION	DATE	BY	REV	DESCRIPTION	DATE	BY
1	FIRST ISSUE	14.03.2014	AA								



Sharjah Health Facility Guidelines at:
www.healthdesign.com.au/shccfg
Editable version of Standard Components on
Health Facility Briefing System (HFBS) at:
www.healthdesign.com.au
Provided by TAHPI

DESIGNED	APPROVED	DATE	SCALE(S)	SHEET
CC	DB	30.12.13	1:50 in A3	2 of 2
CAD FILE NAME		PAPER DRAWING ID		ISSUE
OR-VC-SJ		OR-VC-SJb		1

This document is for advisory purpose only