

# SHARJAH HEALTHCARE CITY STANDARD COMPONENTS

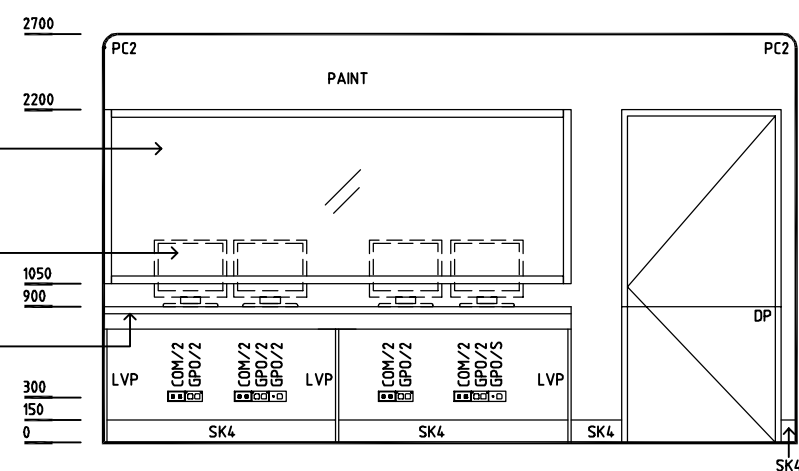
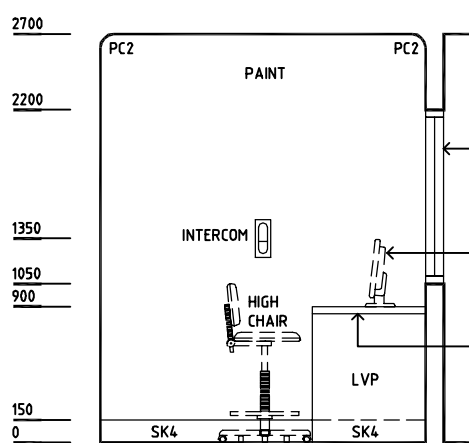
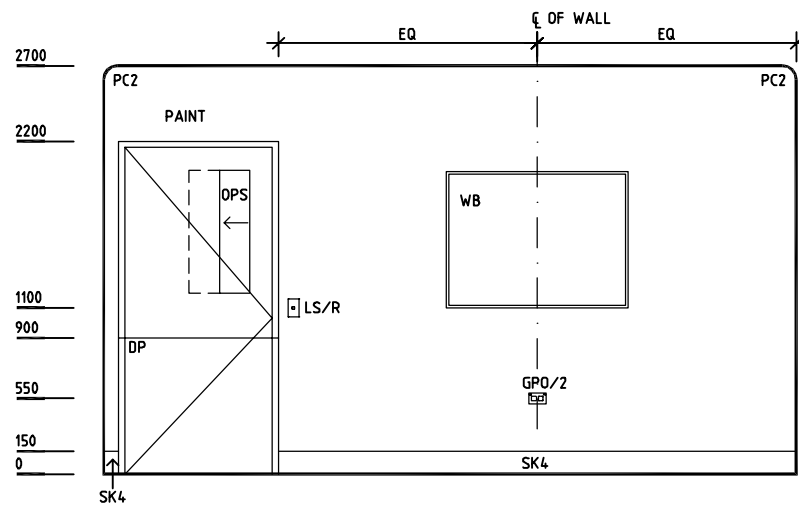
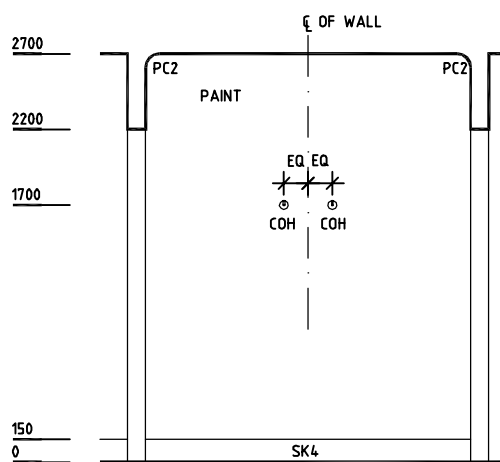
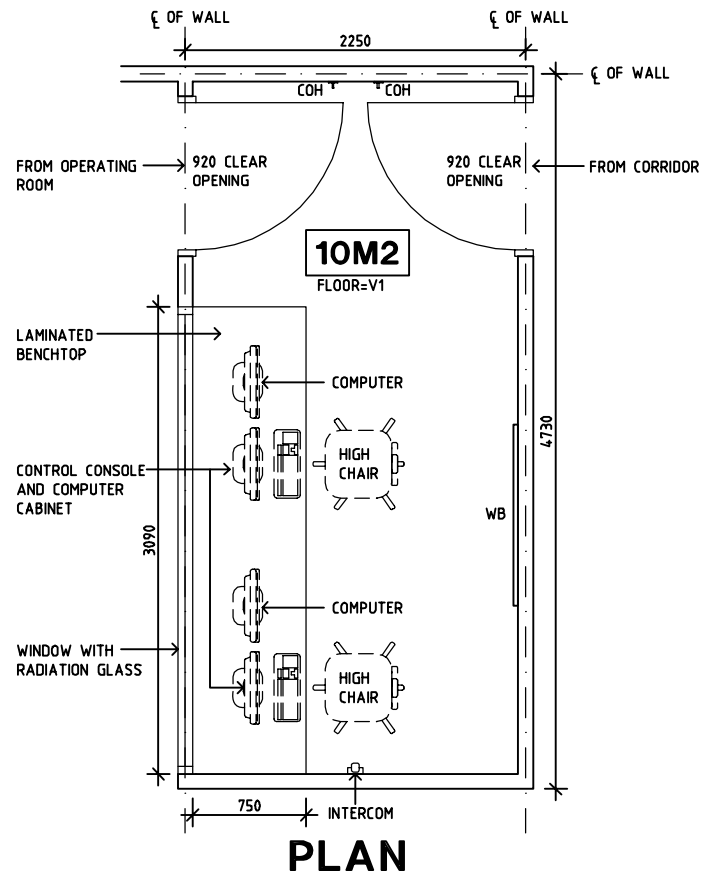
Room Layout Sheet

Room Name **Operating Room - CT Control**

RLS Room Code **OR-CTCR-SJ**

RDS Room Code **OR-CTCR-SJ**

- COH COAT HOOK
- COM/2 COMMUNICATION OUTLET - DOUBLE
- DP DOOR AND FRAME PROTECTION
- GP0/2 GENERAL POWER OUTLET - DOUBLE
- GP0/S GENERAL POWER OUTLET - SPECIAL
- LS/R LIGHT SWITCH - ROOM
- OPS OBSERVATION PANEL WITH SLIDING PANEL
- SK4 FLOOR FINISH COVERED SKIRTING
- V1 VINYL FLOORING STANDARD SLIP RESISTANT
- WB WHITE BOARD



| REV | DESCRIPTION | DATE       | BY | REV | DESCRIPTION | DATE | BY | REV | DESCRIPTION | DATE | BY |
|-----|-------------|------------|----|-----|-------------|------|----|-----|-------------|------|----|
| 1   | FIRST ISSUE | 14.03.2014 | AA |     |             |      |    |     |             |      |    |



Sharjah Health Facility Guidelines at:  
[www.healthdesign.com.au/shcc/hfg](http://www.healthdesign.com.au/shcc/hfg)  
 Editable version of Standard Components on  
 Health Facility Briefing System (HFBS) at:  
[www.healthdesign.com.au](http://www.healthdesign.com.au)  
 Provided by TAHPI

| DESIGNED      | APPROVED | DATE             | SCALE(S)   | SHEET  |
|---------------|----------|------------------|------------|--------|
| CC            | DB       | 30.12.13         | 1:50 in A3 | 1 of 1 |
| CAD FILE NAME |          | PAPER DRAWING ID |            | ISSUE  |
| OR-CTCR-SJ    |          | OR-CTCR-SJ       |            | 1      |

This document is for advisory purpose only