

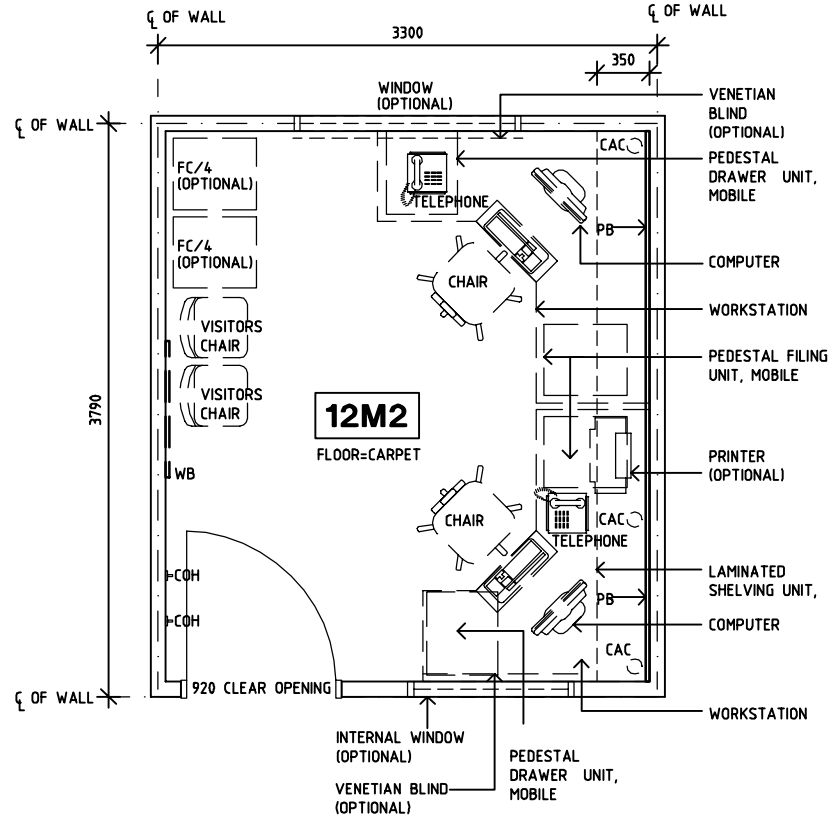
# SHARJAH HEALTHCARE CITY STANDARD COMPONENTS

Room Layout Sheet

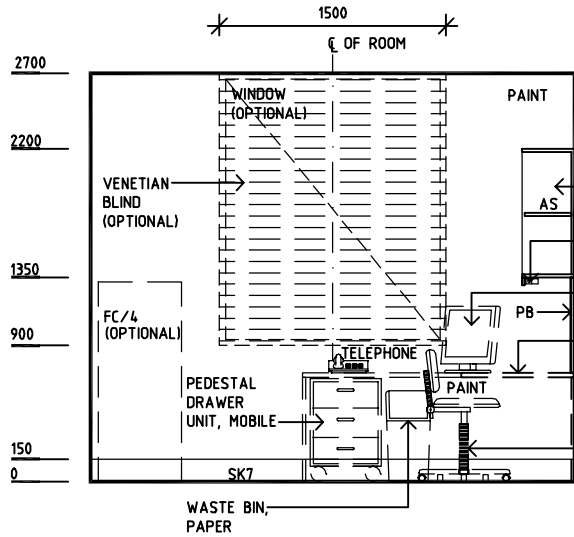
Room Name **Office - 2 Person Shared**

RLS Room Code **OFF-2P-SJ**  
RDS Room Code **OFF-2P-SJ**

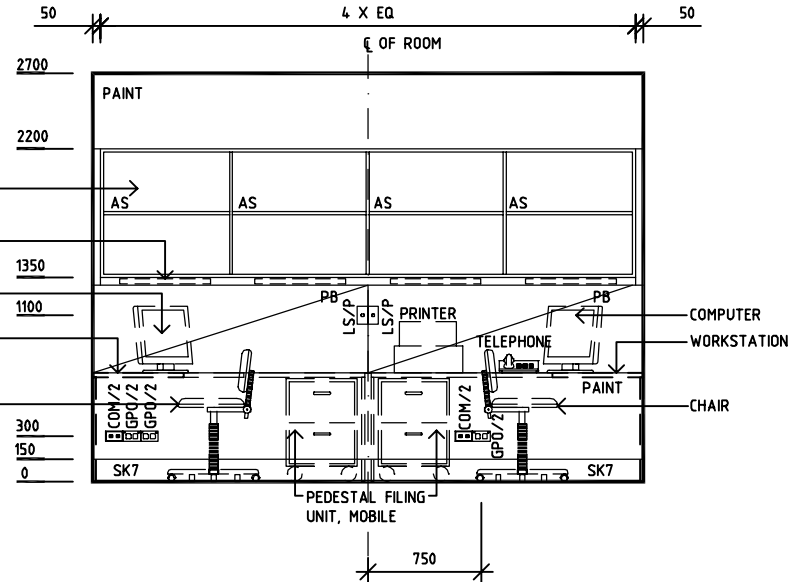
- AS ADJUSTABLE SHELF
- CAC CABLE ACCESS CAP
- COH COAT HOOK
- COM/2 COMMUNICATION OUTLET - DOUBLE
- FC/4 FILING CABINET - 4 DRAWERS
- GPO/2 GENERAL PURPOSE OUTLET - DOUBLE
- LS/P LIGHT SWITCH - PELMET TASK LIGHT
- LS/R LIGHT SWITCH - ROOM
- PB PINBOARD
- SK7 TIMBER SKIRTING
- WB WHITEBOARD



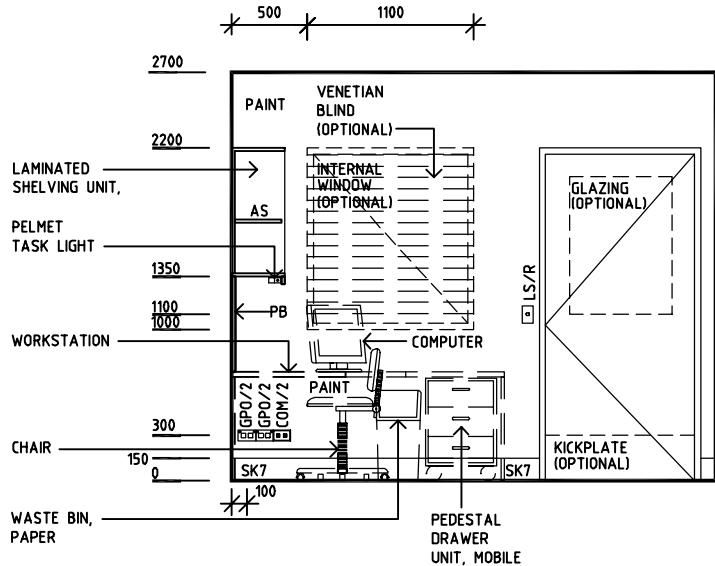
**PLAN**



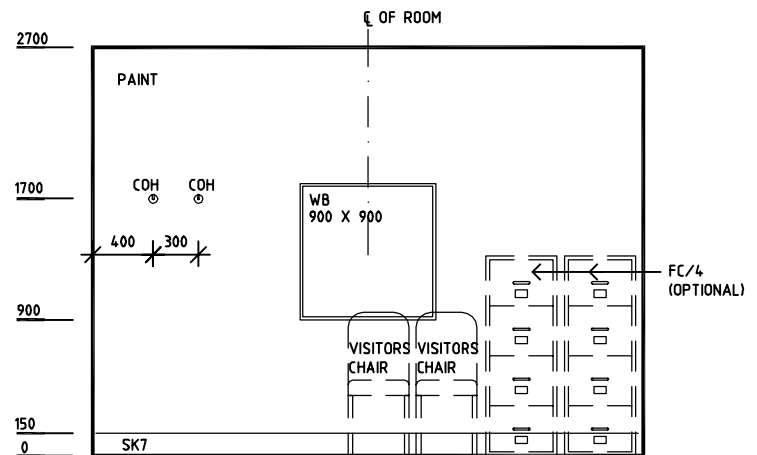
**ELEVATION 1**



**ELEVATION 2**



**ELEVATION 3**



**ELEVATION 4**

REV	DESCRIPTION	DATE	BY	REV	DESCRIPTION	DATE	BY	REV	DESCRIPTION	DATE	BY
1	FIRST ISSUE	14.03.2014	AA								



Sharjah Health Facility Guidelines at:  
www.healthdesign.com.au/shcc/hfg  
Editable version of Standard Components on  
Health Facility Briefing System (HFBS) at:  
www.healthdesign.com.au  
Provided by TAHPI

DESIGNED	APPROVED	DATE	SCALE(S)	SHEET
CC	DB	30.12.13	1:50 in A3	1 of 1
CAD FILE NAME		PAPER DRAWING ID		ISSUE
OFF-2P-SJ		OFF-2P-SJ		1

This document is for advisory purpose only