

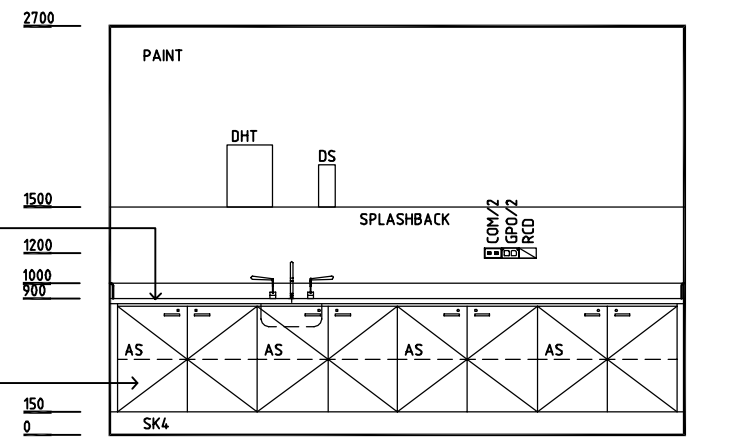
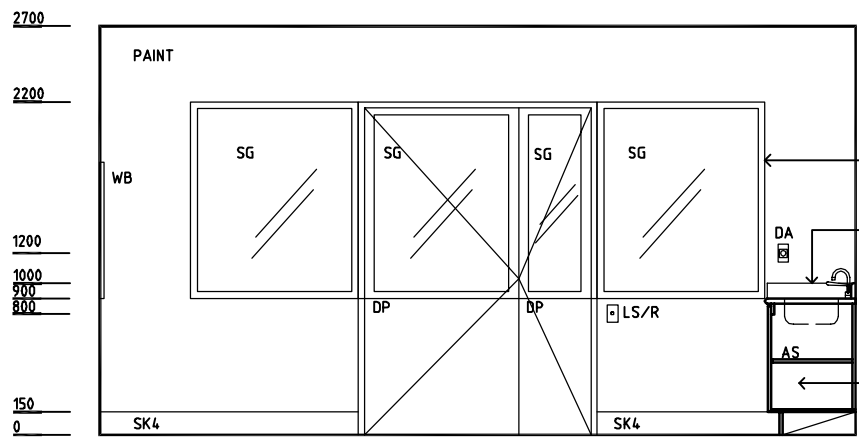
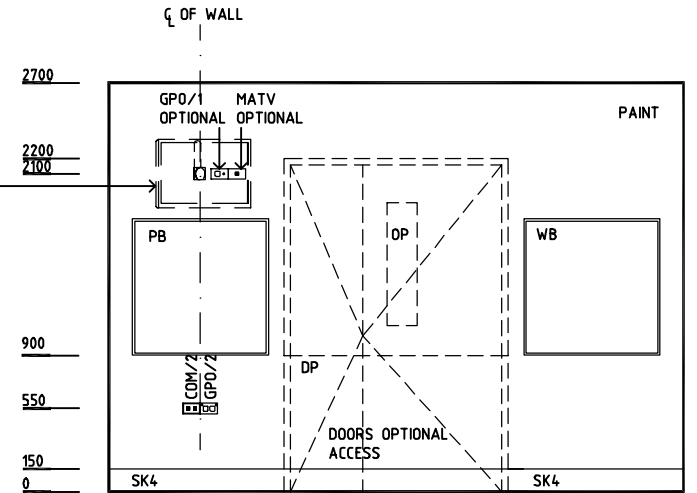
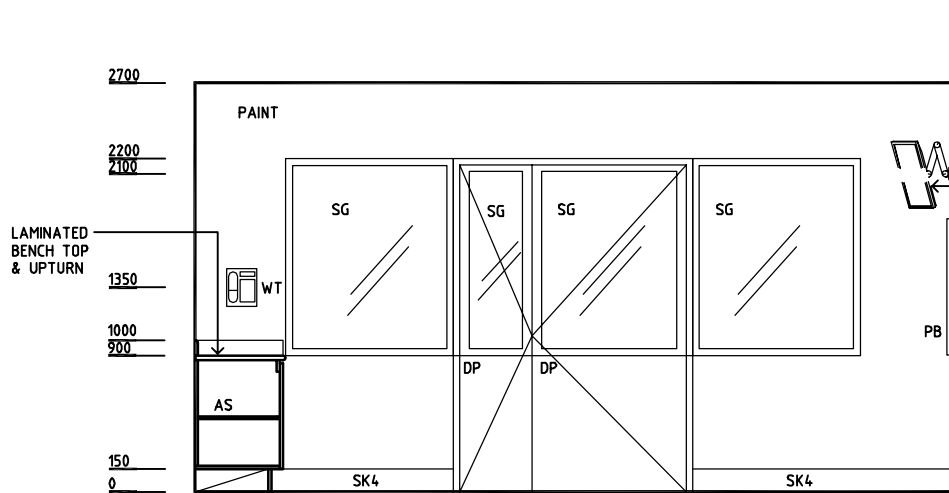
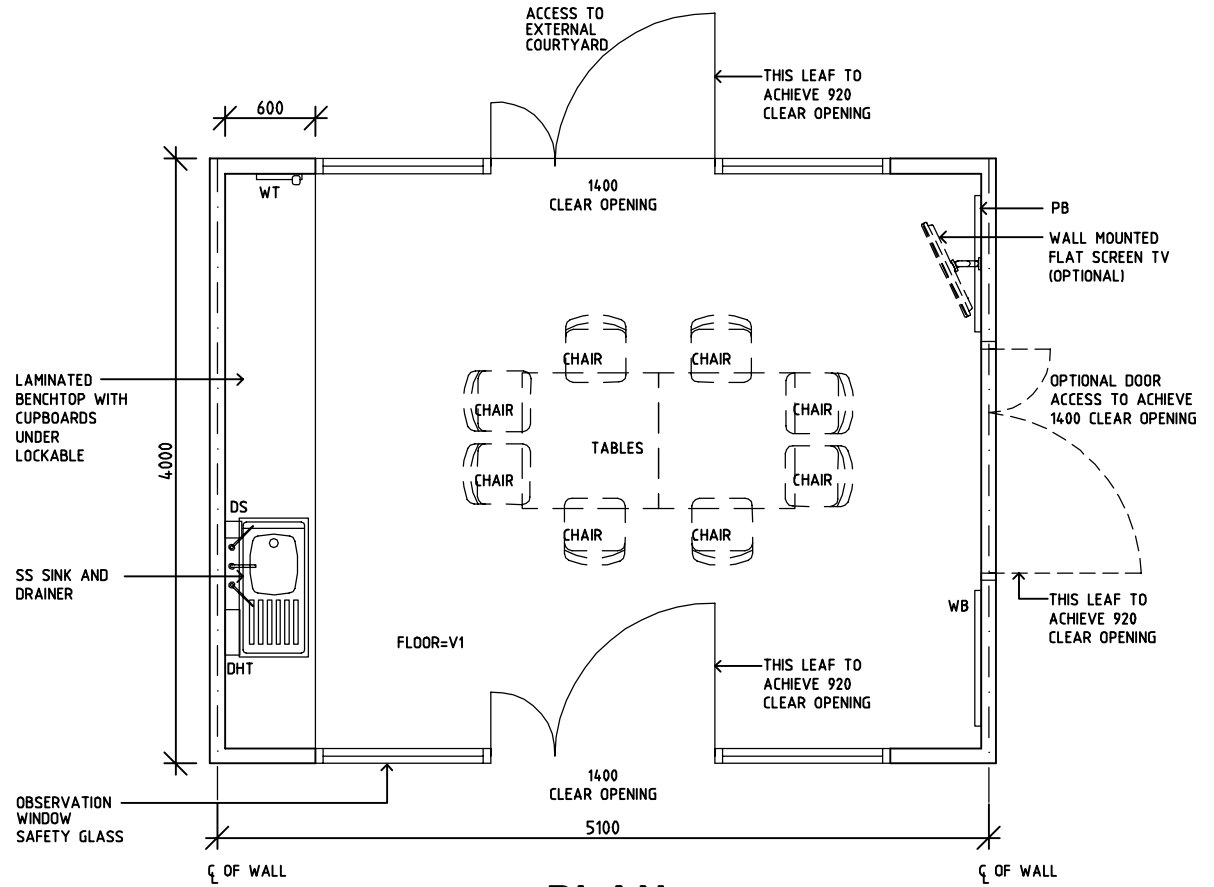
# SHARJAH HEALTHCARE CITY STANDARD COMPONENTS

Room Layout Sheet

Room Name **Multi-functional Activities Room (Mental Health), 20m2**

RLS Room Code **MAC-20-SJ**  
RDS Room Code **MAC-20-SJ**

- AS ADJUSTABLE SHELF
- COM/2 COMMUNICATION OUTLET - DOUBLE
- DA DURESS ALARM
- DP DOOR AND DOOR FRAME PROTECTION
- DS DISPENSER - SOAP
- DHT DISPENSER - HAND TOWEL
- GPO/1 GENERAL POWER OUTLET-SINGLE
- GPO/2 GENERAL POWER OUTLET-DOUBLE
- LS/R LIGHT SWITCH - ROOM
- MATV MASTER ANTENNA TV OUTLET
- OP OBSERVATION PANEL
- PB PINBOARD
- RCD RESIDUAL CURRENT DEVICE
- SG SAFETY GLASS
- SK4 FLOOR VINYL COVERED SKIRTING
- V1 VINYL FLOORING STANDARD SLIP RESISTANT
- WB WHITEBOARD
- WT WALL TELEPHONE



REV	DESCRIPTION	DATE	BY	REV	DESCRIPTION	DATE	BY	REV	DESCRIPTION	DATE	BY
1	FIRST ISSUE	14.03.2014	AA								

**SHCC Guidelines**

Sharjah Health Facility Guidelines at:  
www.healthdesign.com.au/shccfg  
Editable version of Standard Components on  
Health Facility Briefing System (HFBS) at:  
www.healthdesign.com.au  
Provided by TAHPI

DESIGNED	APPROVED	DATE	SCALE(S)	SHEET
CC	DB	30.12.13	1:50 in A3	1 of 1
CAD FILE NAME		PAPER DRAWING ID		ISSUE
MAC-20-SJ		MAC-20-SJ		1

This document is for advisory purpose only