

Room Layout Sheet

Room Name

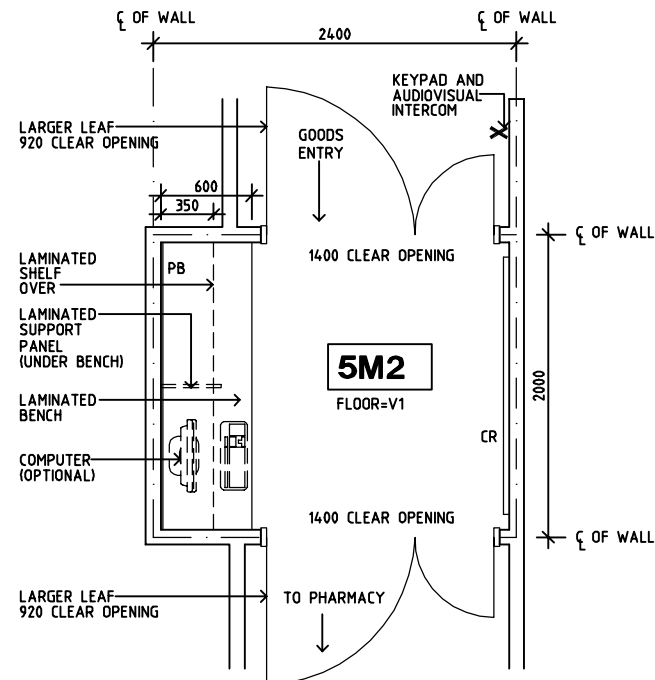
RLS Room Code

GRE-SJ

RDS Room Code

GRE-SJ

COMMUNICATION OUTLET - DOUBLE
CRASH RAIL
DOOR AND DOOR FRAME PROTECTION
GENERAL POWER OUTLET - DOUBLE
LIGHT SWITCH - ROOM
OBSERVATION PANEL
PINBOARD FLOOR
VINYL COVED SKIRTING VINYL
FLOORING, STANDARD SLIP RESISTANT



2700

DOOR SECURITY 'PEEPHOLE'

2200

PAINT

LAMINATED SHELF

1500

PB

LAMINATED BENCHTOP

1000

900

DP

DP

CR

GOO ENT DOO

SK4

150

0

LAMINATED SUPPORT PANEL

Diagram description: This is a technical elevation drawing of a door assembly. On the left, a vertical section shows a door with a 'DOOR SECURITY PEEPHOLE' at 2200 units. Below it, a 'LAMINATED SHELF' is at 1500 units, and a 'LAMINATED BENCHTOP' is at 1000 units. A 'LAMINATED SUPPORT PANEL' is shown at the bottom left. The door itself is labeled 'PAINT' at the top. The main door panel is divided into four quadrants by a horizontal and vertical line, with 'DP' (Double Panel) labels in the bottom-left and bottom-right quadrants. A 'CR' (Crimper) is indicated on the right side of the door. A 'GOO ENT DOO' (Glass Entry Door) is shown on the right. A 'SK4' (Sill) is at the bottom. Dimensions are given in units: 2700 (total height), 2200 (peephole), 1500 (shelf), 1000 (benchtop), 900 (support panel), 150 (sill), and 0 (bottom). A 'PB' (Pencil) is also indicated near the shelf.

2700

1100

900

150

0

PAINT

LS/R

CR

PAINT

SK4

2700

2200

1500

1000

500

150

0

PAINT

DP

OP

CR

SK4

DOOR TO PHARMACY

LAMINATED SHELF

COMPUTER (OPTIONAL)

LAMINATED BENCHTOP

LAMINATED VERTICAL SUPPORT PANEL

2700

1500

1200

1000

150

0

PAINT

COM/2 GPO/2 x2

PB

PAINT

SK4

SK4

EQ

EQ

[illegible]

SHCC Guidelines

Sharjah Health Facility Guidelines at:
www.healthdesign.com.au/shcfcfg
 Editable version of Standard Components on
 Health Facility Briefing System (HFBS) at:
www.healthdesign.com.au
 Provided by TAHPI

DESIGNED	APPROVED	DATE	SCALE(S)	SHEET
CC	DB	30.12.13	1:50 in A3	1 of 1
CAD FILE NAME GRE-SJ		PAPER DRAWING ID GRE-SJ		ISSUE 1

This document is for advisory purpose only