

SHARJAH HEALTHCARE CITY STANDARD COMPONENTS

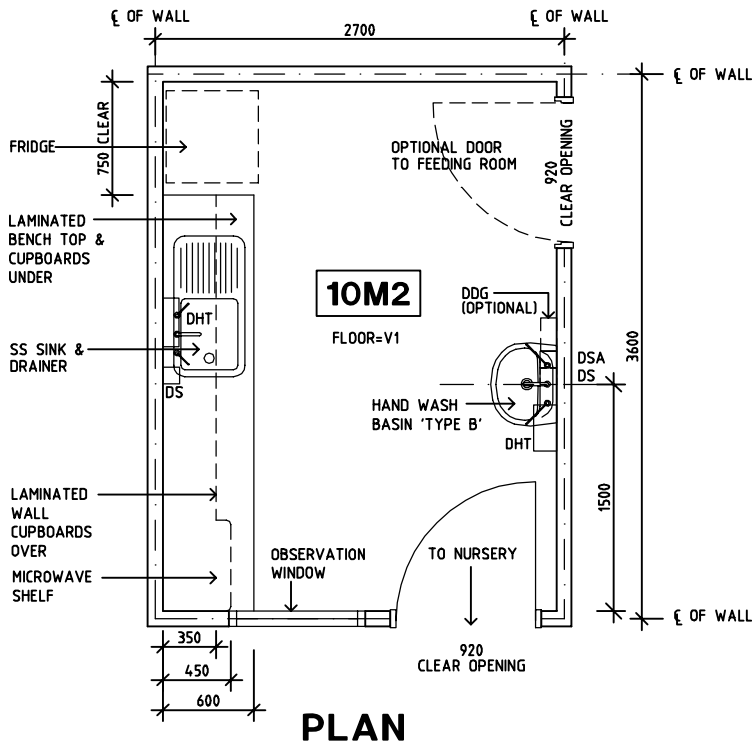
Room Layout Sheet

Room Name

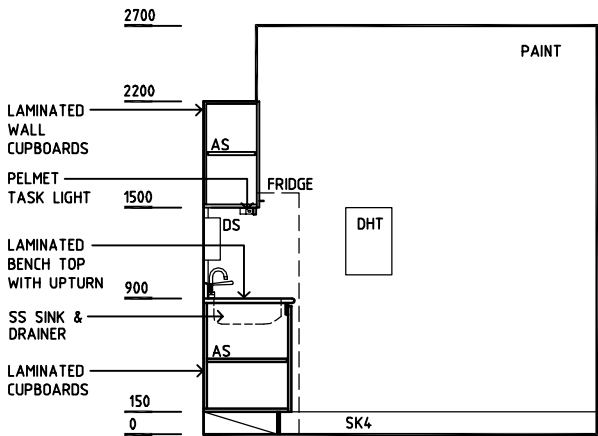
Formula Room

RLS Room Code FORM-SJ
RDS Room Code FORM-SJ

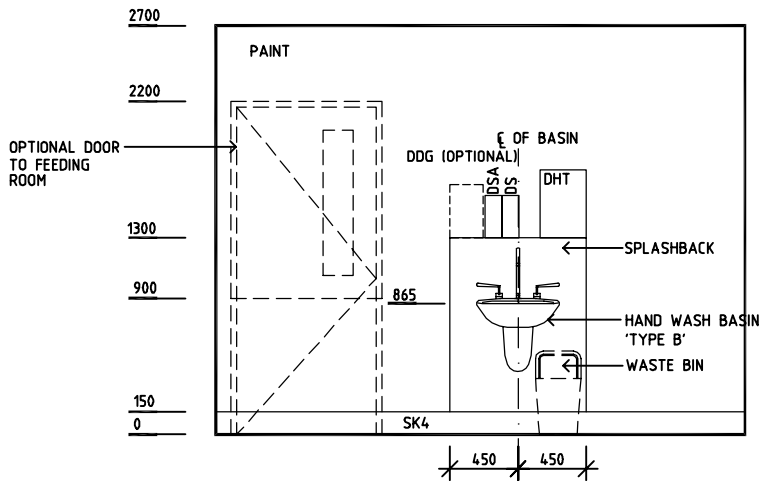
- AS ADJUSTABLE SHELF
- DHT DISPENSER - HAND TOWEL
- DP DOOR & DOOR FRAME PROTECTION
- DS DISPENSER - SOAP
- GP0/1 GENERAL POWER OUTLET - SINGLE
- GP0/S GENERAL POWER OUTLET - SPECIAL, SINGLE
- LS/P LIGHT SWITCH - PELMET TASK LIGHT
- LS/R LIGHT SWITCH - ROOM
- RCD RESIDUAL CURRENT DEVICE
- SK4 FLOOR VINYL COVED
- SS STAINLESS STEEL
- V1 VINYL FLOORING, STANDARD SLIP RESISTANT



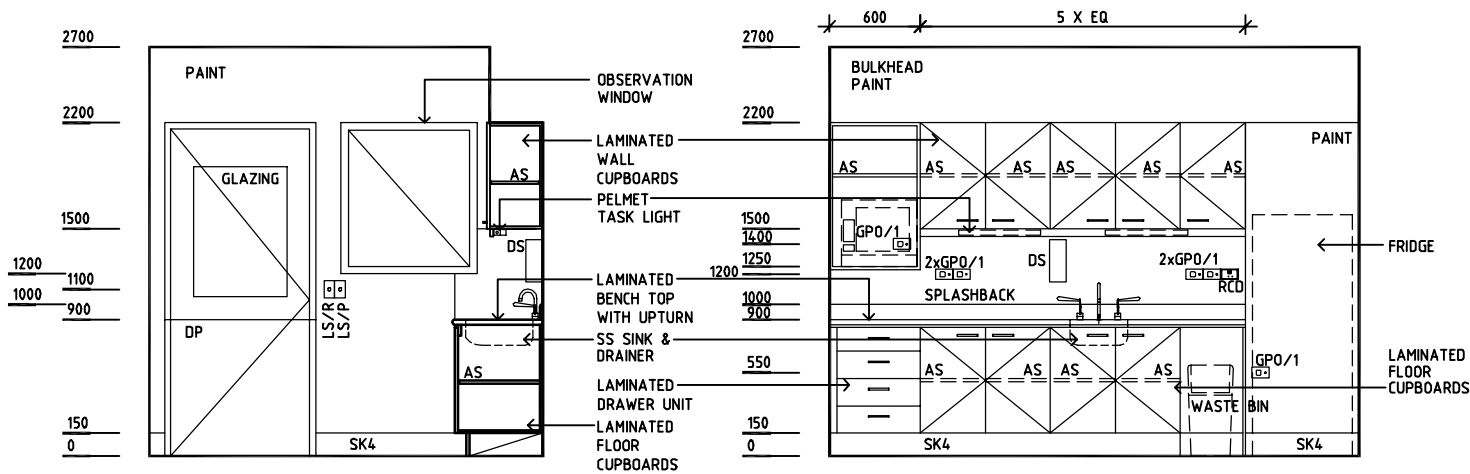
PLAN



ELEVATION 1



ELEVATION 2



ELEVATION 3

ELEVATION 4

REV	DESCRIPTION	DATE	BY	REV	DESCRIPTION	DATE	BY	REV	DESCRIPTION	DATE	BY
1	FIRST ISSUE	14.03.2014	AA								

	<h1>SHCC Guidelines</h1>	<p>Sharjah Health Facility Guidelines at: www.healthdesign.com.au/shccfig Editable version of Standard Components on Health Facility Briefing System (HFBS) at: www.healthdesign.com.au Provided by TAHPI</p>	DESIGNED	APPROVED	DATE	SCALE(S)	SHEET
			CC	DB	30.12.13	1:50 in A3	1 of 1
			CAD FILE NAME FORM-SJ		PAPER DRAWING ID FORM-SJ		ISSUE 1