

SHARJAH HEALTHCARE CITY STANDARD COMPONENTS

Room Layout Sheet

Room Name

Ensuite - Standard, Additional Access

RLS Room Code ENS-ST-C-SJ
RDS Room Code ENS-ST-C-SJ

- CH

COH

CP

DDG

DHT

DP

DS

DTP

EC

FW

GPO/1

GPO/2

GR

IV

LS/E

NA

NC

RCD

S/SH

SS

TR

WBS

WC
- CATHETER HOOK

COAT HOOK

CHROME PLATED

DISPENSER - DISPOSABLE GLOVE

DISPENSER - HAND TOWEL

DOOR AND DOOR FRAME PROTECTION

DISPENSER - SOAP

DISPENSER - TOILET PAPER

EMERGENCY CALL

FLOOR WASTE

GENERAL POWER OUTLET - SINGLE

GENERAL POWER OUTLET - DOUBLE

GRAB RAIL

IV HOOK

LIGHT SWITCH - ENSUITE

NURSE ASSIST CALL

PATIENT/NURSE CALL

RESIDUAL CURRENT DEVICE

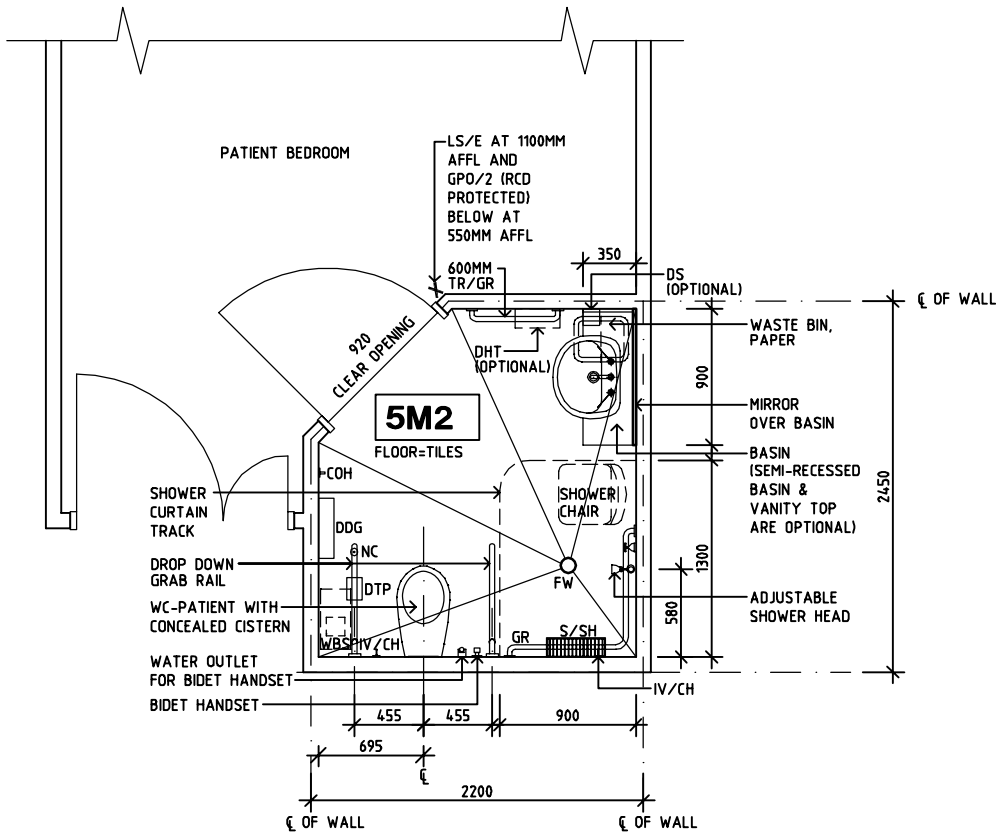
SOAP AND SHAMPOO HOLDER

STAINLESS STEEL

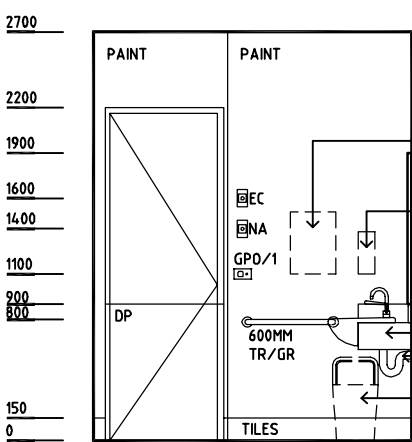
TOWEL RAIL

WASTE BIN, SANITARY

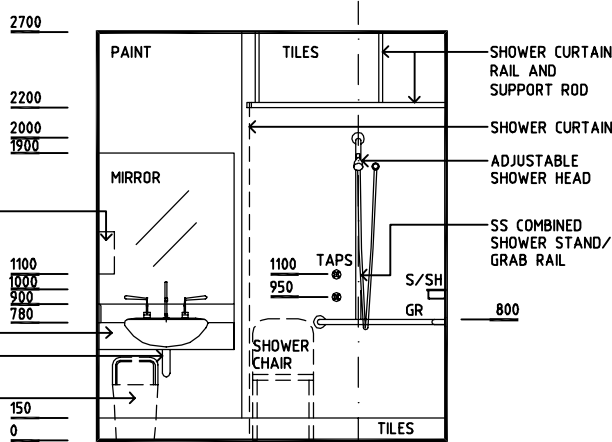
WATER CLOSET



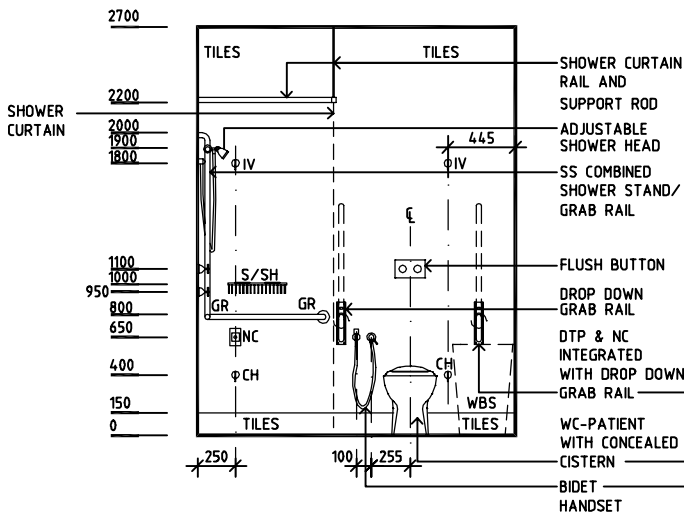
PLAN



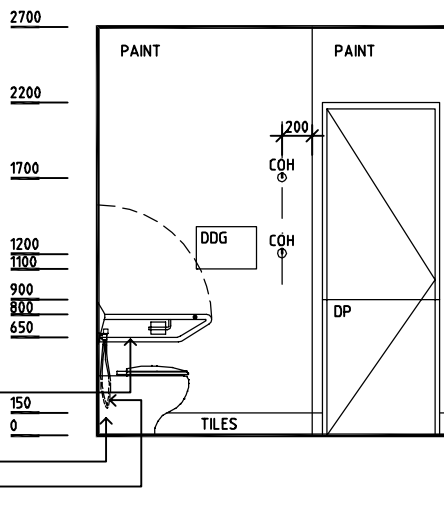
ELEVATION 1



ELEVATION 2



ELEVATION 3



ELEVATION 4

REV	DESCRIPTION	DATE	BY	REV	DESCRIPTION	DATE	BY	REV	DESCRIPTION	DATE	BY
1	FIRST ISSUE	14.03.2014	AA								

	<h1>SHCC Guidelines</h1>	<p>Sharjah Health Facility Guidelines at: www.healthdesign.com.au/shccfg Editable version of Standard Components on Health Facility Briefing System (HFBS) at: www.healthdesign.com.au Provided by TAHPI</p>	DESIGNED	APPROVED	DATE	SCALE(S)	SHEET
			CC	DB	30.12.13	1:50 in A3	1 of 1
			CAD FILE NAME ENS-ST-C-SJ		PAPER DRAWING ID ENS-ST-C-SJ		ISSUE 1