

SHARJAH HEALTHCARE CITY STANDARD COMPONENTS

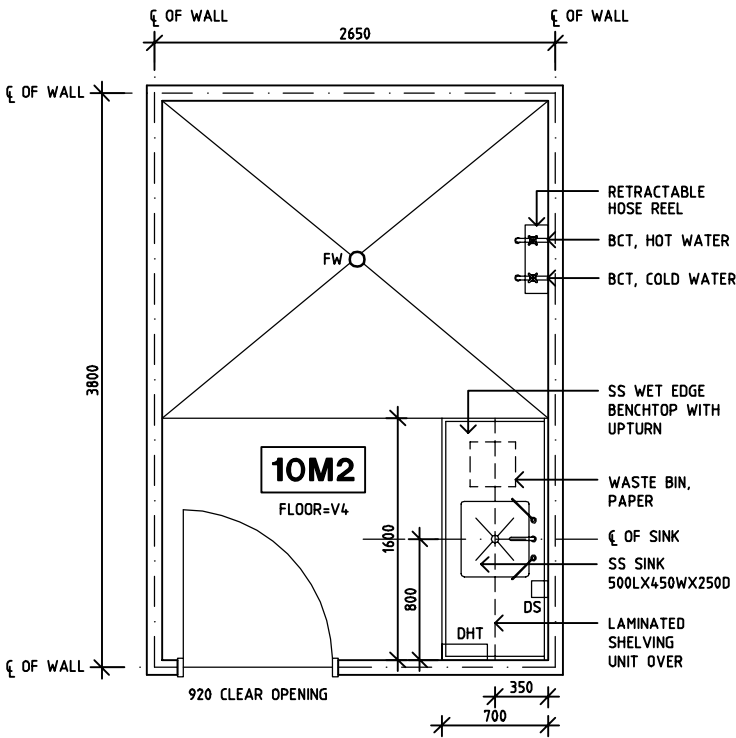
Room Layout Sheet

Room Name

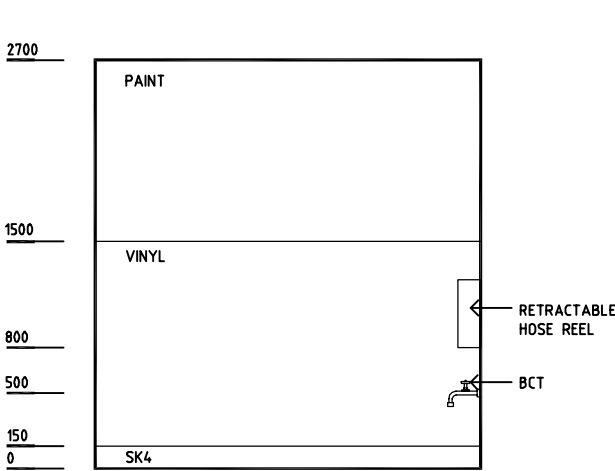
Equipment Clean-Up, Load Equipment, 10m2

RLS Room Code ECL-LE-10-SJ  
RDS Room Code ECL-LE-10-SJ

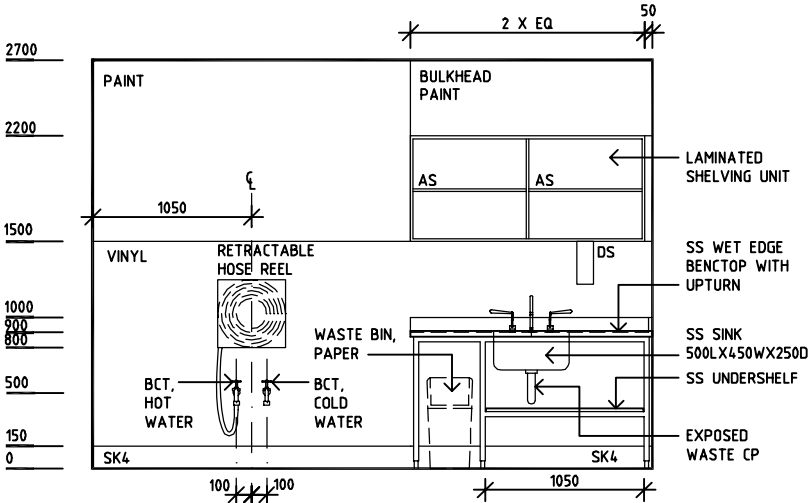
- AS  
BCT  
CP  
DHT  
DP  
DS  
FW  
LS/R  
OP  
SK4  
SS  
V4
- ADJUSTABLE SHELF  
BIBCOCK HOSE TAP  
CHROMED PLATED  
DISPENSER - HAND TOWEL  
DOOR AND DOOR FRAME PROTECTION  
DISPENSER - SOAP  
FLOOR WASTE  
LIGHT SWITCH - ROOM  
OBSERVATION PANEL  
FLOOR VINYL COVERED SKIRTING  
STAINLESS STEEL  
VINYL FLOORING - NON SLIP SAFETY



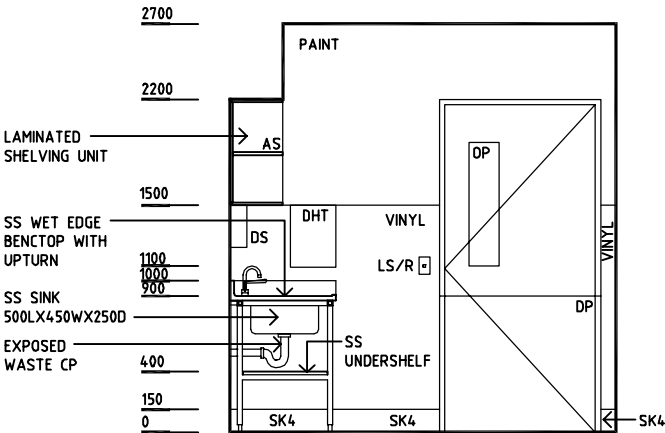
PLAN



ELEVATION 1



ELEVATION 2



ELEVATION 3

REV	DESCRIPTION	DATE	BY	REV	DESCRIPTION	DATE	BY	REV	DESCRIPTION	DATE	BY
1	FIRST ISSUE	14.03.2014	AA								

	SHCC Guidelines				Sharjah Health Facility Guidelines at: www.healthdesign.com.au/shcc/hfg Editable version of Standard Components on Health Facility Briefing System (HFBS) at: www.healthdesign.com.au Provided by TAHPI				DESIGNED	APPROVED	DATE	SCALE(S)	SHEET
									CC	DB	30.12.13	1:50 in A3	1 of 1
									CAD FILE NAME ECL-LE-10-SJ	PAPER DRAWING ID ECL-LE-10-SJ		ISSUE 1	