

SHARJAH HEALTHCARE CITY STANDARD COMPONENTS

Room Layout Sheet

Room Name

Drug Information

RLS Room Code DRI-SJ
RDS Room Code DRI-SJ

- AS

CAC

COM/2

GPO/2

LS/P

PB

SK4

V1
- ADJUSTABLE SHELF

CABLE ACCESS CAP

COMMUNICATION OUTLET-DOUBLE

GENERAL POWER OUTLET - DOUBLE

LIGHT SWITCH - PELMET TASK LIGHT

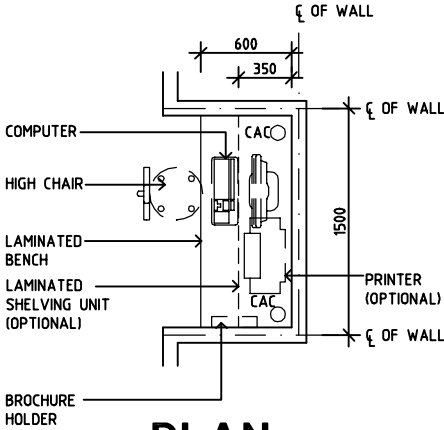
PINBOARD

FLOOR VINYL COVED SKIRTING

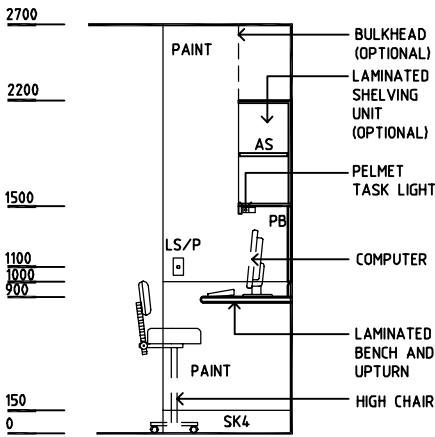
VINYL FLOORING, STANDARD SLIP RESISTANT



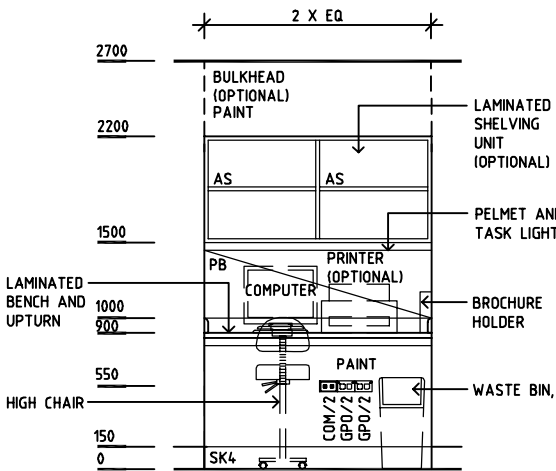
1M2
FLOOR = V1
(CARPET OPTIONAL)



PLAN



ELEVATION 1



ELEVATION 2

REV	DESCRIPTION	DATE	BY	REV	DESCRIPTION	DATE	BY	REV	DESCRIPTION	DATE	BY
1	FIRST ISSUE	14.03.2014	AA								

	<div>Sharjah Health Facility Guidelines at: www.healthdesign.com.au/shccfig Editable version of Standard Components on Health Facility Briefing System (HFBS) at: www.healthdesign.com.au Provided by TAHPI</div>							DESIGNED	APPROVED	DATE	SCALE(S)	SHEET
								CC	DB	30.12.13	1:50 in A3	1 of 1
								CAD FILE NAME DRI-SJ		PAPER DRAWING ID DRI-SJ		ISSUE 1