

SHARJAH HEALTHCARE CITY STANDARD COMPONENTS

Room Layout Sheet

Room Name Dental Workroom

RLS Room Code DENW-SJ
RDS Room Code DENW-SJ

- AS

CA

COM/2

CW

DDG

DHT

DM

DP

DS

DSA

FW

GPO/2

LS/R

NG

SK4

SS

V1
- ADJUSTABLE SHELF

COMPRESSED AIR

COMMUNICATION OUTLET- DOUBLE

COLD WATER OUTLET

DISPENSER - DISPOSABLE GLOVE

DISPENSER - HAND TOWEL

DISPENSER - MASK

DOOR AND DOOR FRAME PROTECTION

DISPENSER - SOAP

DISPENSER - SOAP ANTISEPTIC

FLOOR WASTE

GENERAL POWER OUTLET- DOUBLE

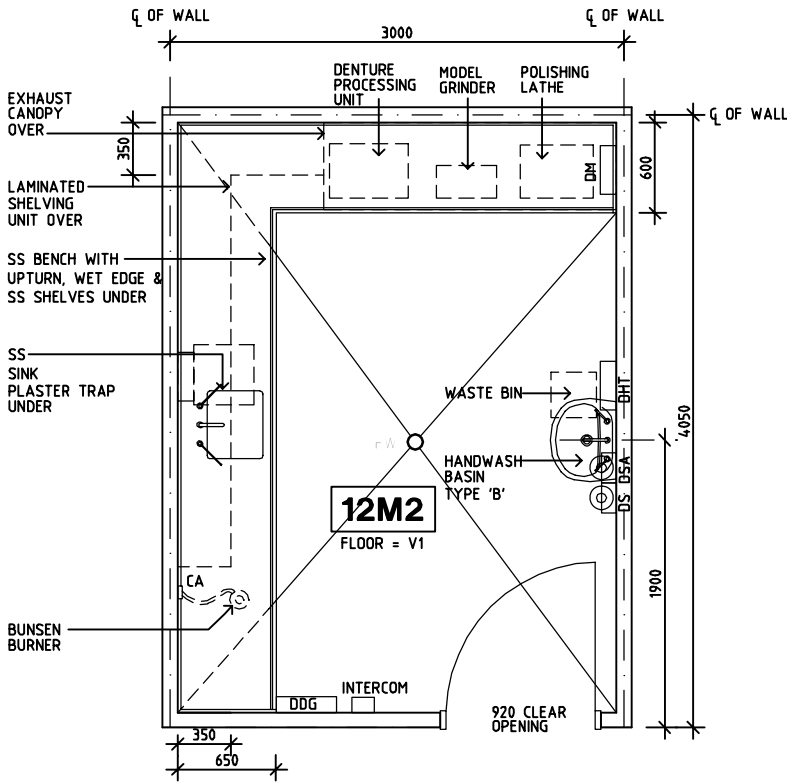
LIGHT SWITCH - ROOM

NATURAL GAS

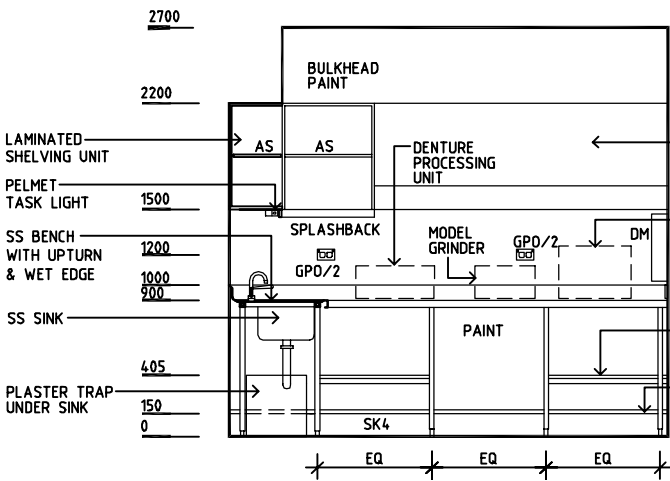
FLOOR VINYL COVED SKIRTING

STAINLESS STEEL

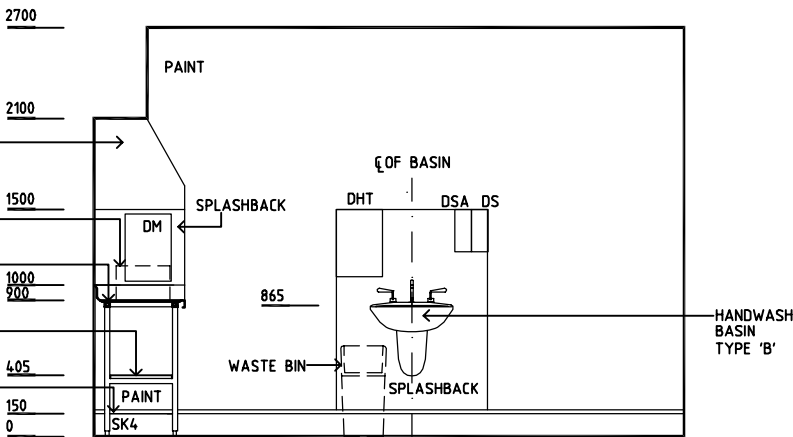
VINYL FLOORING, STANDARD SLIP RESISTANT



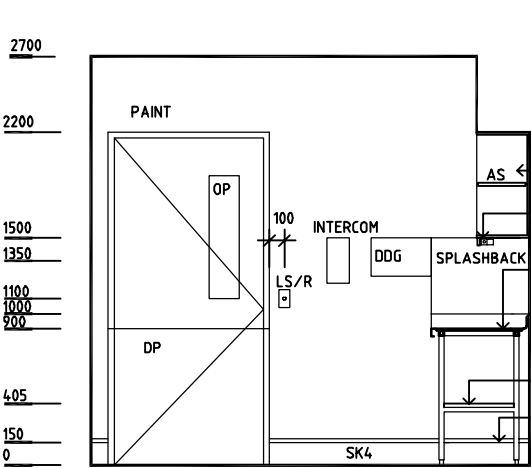
PLAN



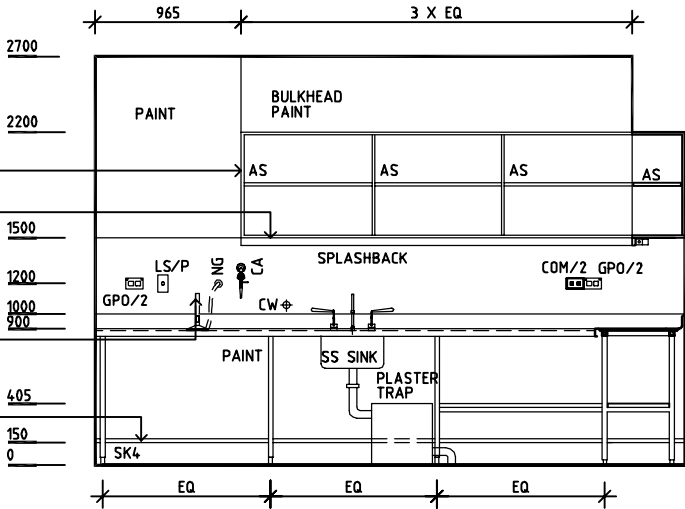
ELEVATION 1



ELEVATION 2



ELEVATION 3



ELEVATION 4

REV	DESCRIPTION	DATE	BY	REV	DESCRIPTION	DATE	BY	REV	DESCRIPTION	DATE	BY
1	FIRST ISSUE	14.03.2014	AA								

	<div>Sharjah Health Facility Guidelines at: www.healthdesign.com.au/shcc/fig Editable version of Standard Components on Health Facility Briefing System (HFBS) at: www.healthdesign.com.au Provided by TAHPI</div>										DESIGNED	APPROVED	DATE	SCALE(S)	SHEET
											CC	DB	30.12.13	1:50 in A3	1 of 1
											CAD FILE NAME DENW-SJ		PAPER DRAWING ID DENW-SJ		ISSUE 1