

SHARJAH HEALTHCARE CITY STANDARD COMPONENTS

Room Layout Sheet

Room Name Clean Utility - Sub, 8m2

RLS Room Code CLUR-8-SJ
RDS Room Code CLUR-8-SJ

- AS

COM/2

DDG

DHT

DMG

DP

DS

DSA

FS

GPO/1

LS/R

LS/P

OP

SK4

V1
- ADJUSTABLE SHELF

COMMUNICATION OUTLET-DOUBLE

DISPENSER - DISPOSABLE GLOVES

DISPENSER - HAND TOWEL

DISPENSER - MEDICATED HAND GEL

DOOR AND FRAME PROTECTION

DISPENSER - SOAP

DISPENSER - SOAP ANTISEPTIC

FIXED SHELF

GENERAL POWER OUTLET-SINGLE

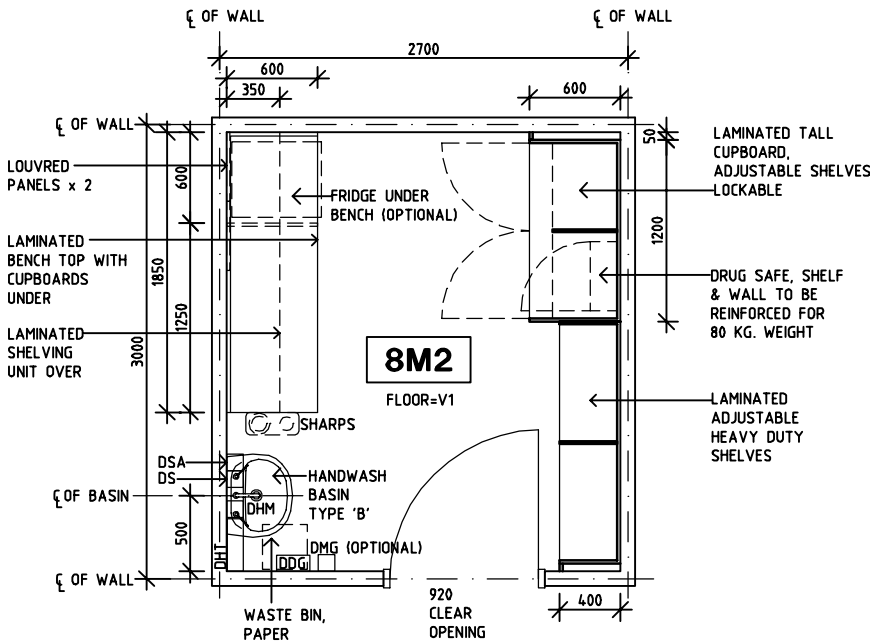
LIGHT SWITCH - ROOM

LIGHT SWITCH- PELMET LIGHT

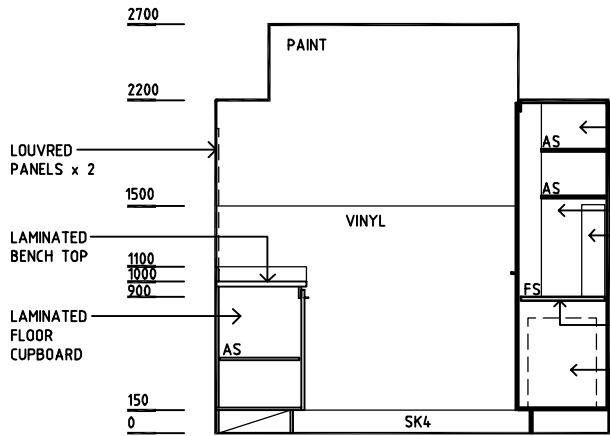
OBSERVATION PANEL

FLOOR VINYL COVED SKIRTING

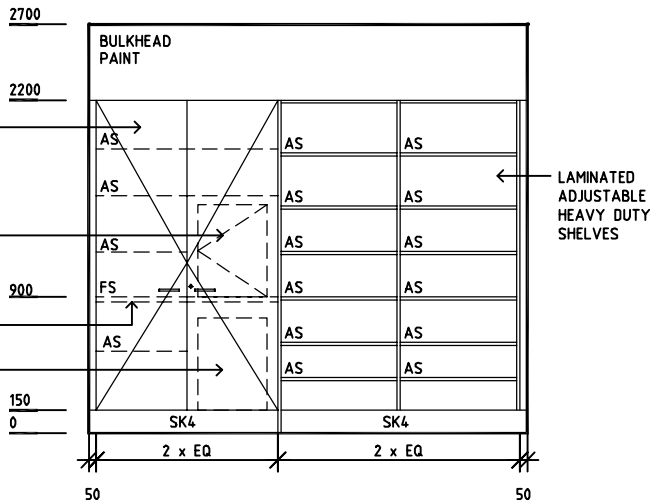
VINYL FLOORING, STANDARD SLIP RESISTANT



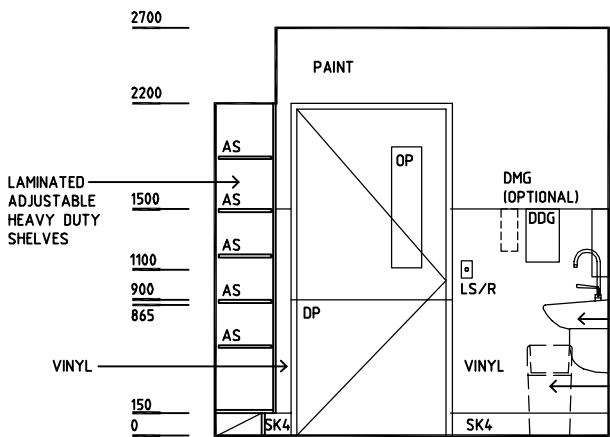
PLAN



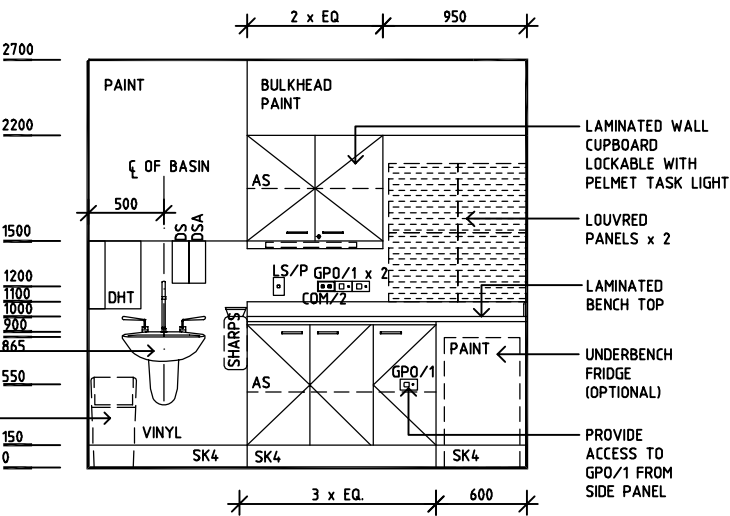
ELEVATION 1



ELEVATION 2



ELEVATION 3



ELEVATION 4

REV	DESCRIPTION	DATE	BY	REV	DESCRIPTION	DATE	BY	REV	DESCRIPTION	DATE	BY
1	FIRST ISSUE	14.03.2014	AA								

	Sharjah Health Facility Guidelines at: www.healthdesign.com.au/shccfg Editable version of Standard Components on Health Facility Briefing System (HFBS) at: www.healthdesign.com.au Provided by TAHPI				DESIGNED	APPROVED	DATE	SCALE(S)	SHEET
					CC	DB	30.12.13	1:50 in A3	1 of 1
					CAD FILE NAME CLUR-8-SJ	PAPER DRAWING ID CLUR-8-SJ		ISSUE 1	