

SHARJAH HEALTHCARE CITY STANDARD COMPONENTS

Room Layout Sheet

Room Name

Clean Utility, 12m2

RLS Room Code

CLUR-12-SJ

RDS Room Code

CLUR-12-SJ

- AS

COM/2

DHT

DMG

DP

DS

DSA

FS

GPO/1

LS/P

LS/R

OP

SK4

SS

V1
- ADJUSTABLE SHELF

COMMUNICATION OUTLET - DOUBLE

DISPENSER - HAND TOWEL

DISPENSER - MEDICATED HAND GEL

DOOR AND DOOR FRAME PROTECTION

DISPENSER - SOAP

DISPENSER - SOAP ANTISEPTIC

FIXED SHELF

GENERAL POWER OUTLET - SINGLE

LIGHT SWITCH - PELMET TASK LIGHT

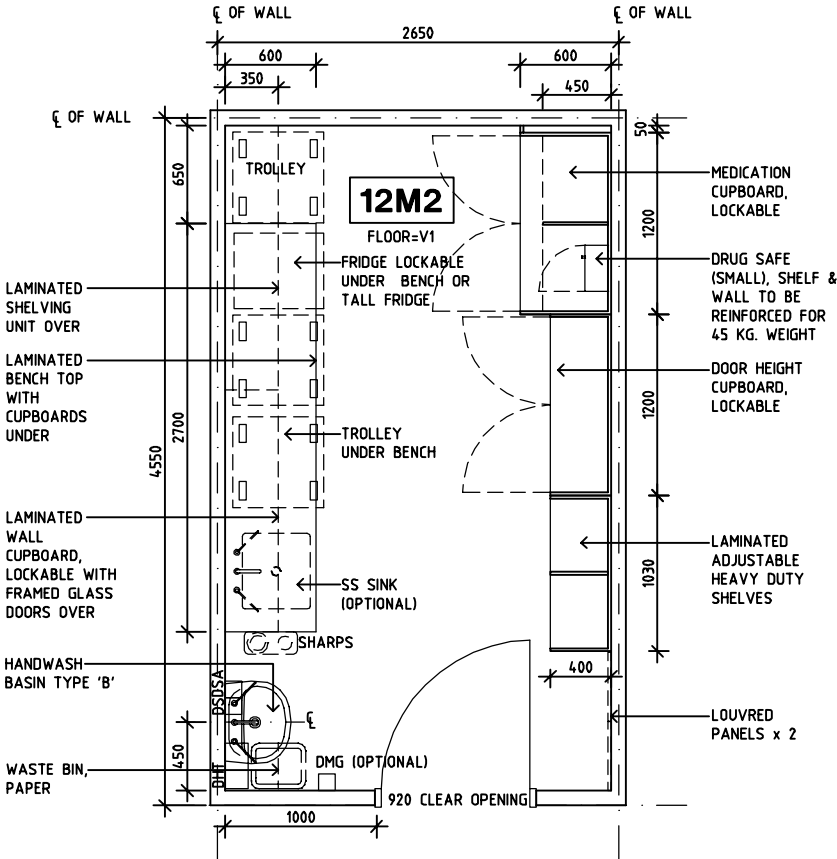
LIGHT SWITCH - ROOM

OBSERVATION PANEL

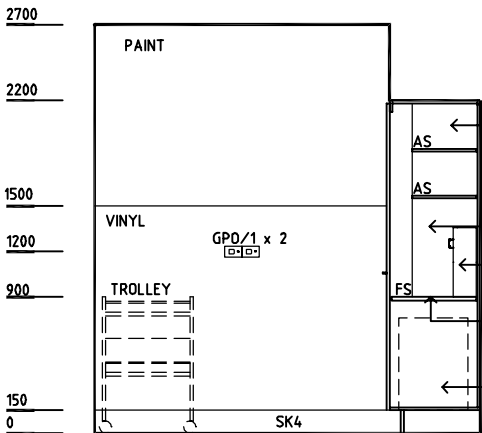
FLOOR VINYL COVED SKIRTING

STAINLESS STEEL

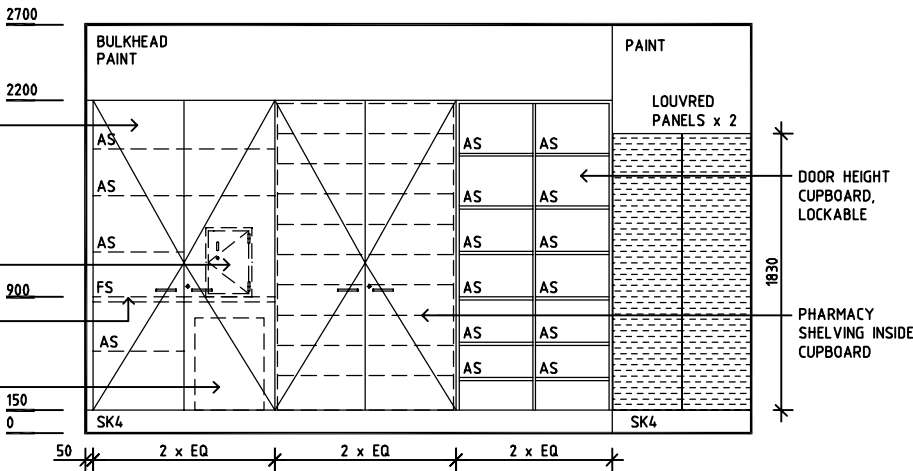
VINYL FLOORING, STANDARD SLIP RESISTANT



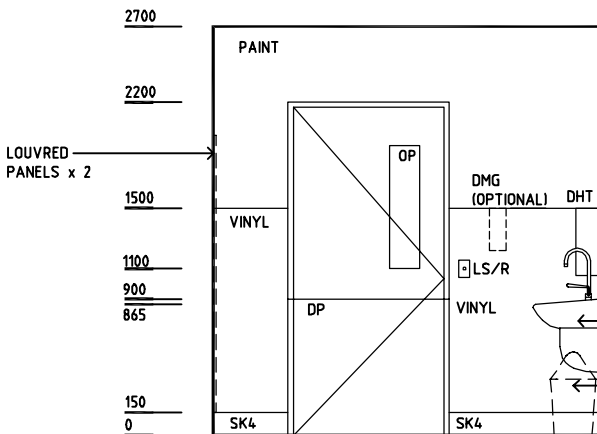
PLAN



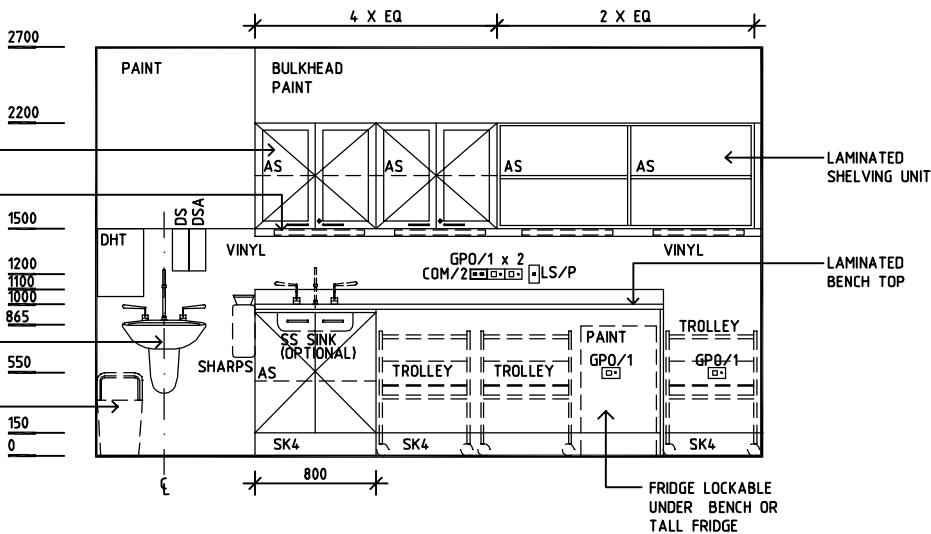
ELEVATION 1



ELEVATION 2



ELEVATION 3



ELEVATION 4

REV	DESCRIPTION	DATE	BY	REV	DESCRIPTION	DATE	BY	REV	DESCRIPTION	DATE	BY
1	FIRST ISSUE	14.03.2014	AA								

	<h1>SHCC Guidelines</h1>	<p>Sharjah Health Facility Guidelines at: www.healthdesign.com.au/shccfg Editable version of Standard Components on Health Facility Briefing System (HFBS) at: www.healthdesign.com.au Provided by TAHPI</p>	DESIGNED	APPROVED	DATE	SCALE(S)	SHEET
			CC	DB	30.12.13	1:50 in A3	1 of 1
			CAD FILE NAME CLUR-12-SJ		PAPER DRAWING ID CLUR-12-SJ		ISSUE 1