

SHARJAH HEALTHCARE CITY STANDARD COMPONENTS

Room Layout Sheet

Room Name Cashier

RLS Room Code CASH-SJ  
RDS Room Code CASH-SJ

- AS

CAC

COH

COM/2

COM/EFTPOS

DA

GPO/2

LS/R

LVP

PB

SK7
- ADJUSTABLE SHELF

CABLE ACCESS CAP

COAT HOOK

COMMUNICATION OUTLET - DOUBLE

COMMUNICATION OUTLET - FOR EFTPOS CONNECTION

DURESS ALARM

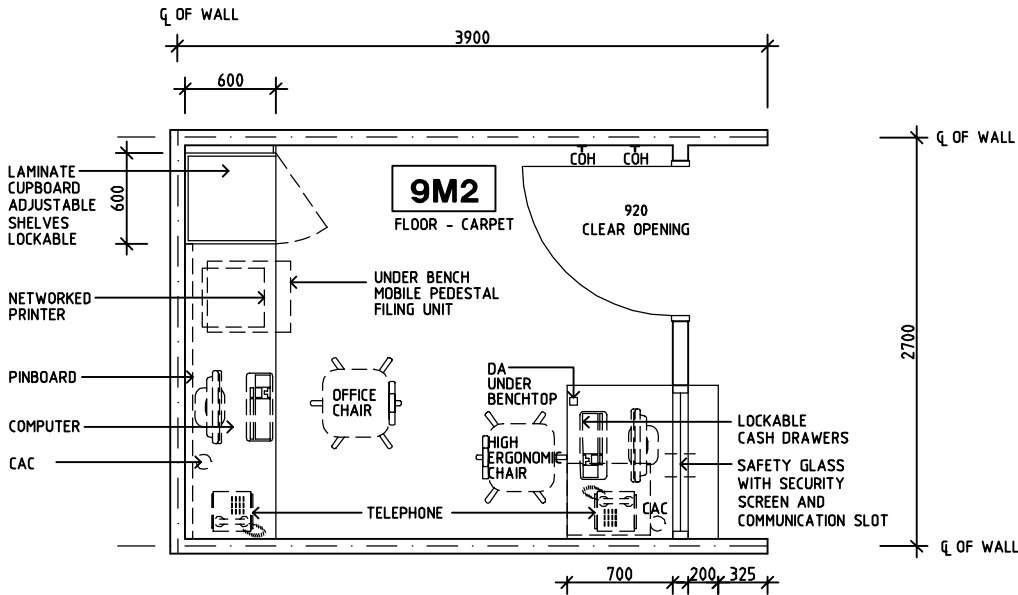
GENERAL POWER OUTLET - DOUBLE

LIGHT SWITCH - ROOM

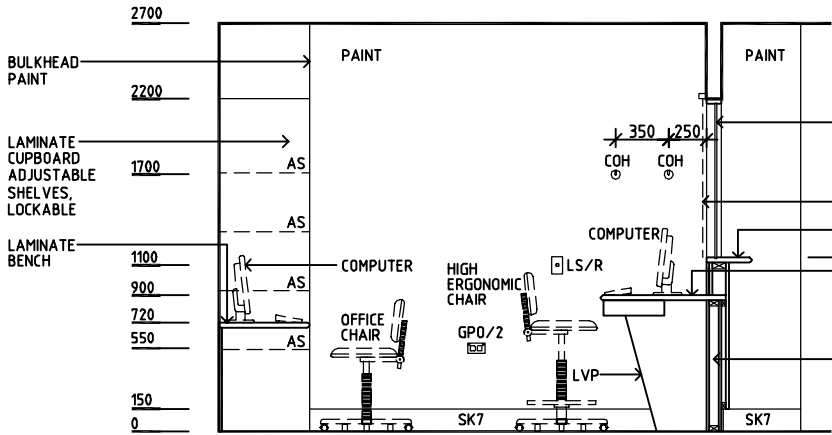
LAMINATE VERTICAL SUPPORT PANEL

PINBOARD

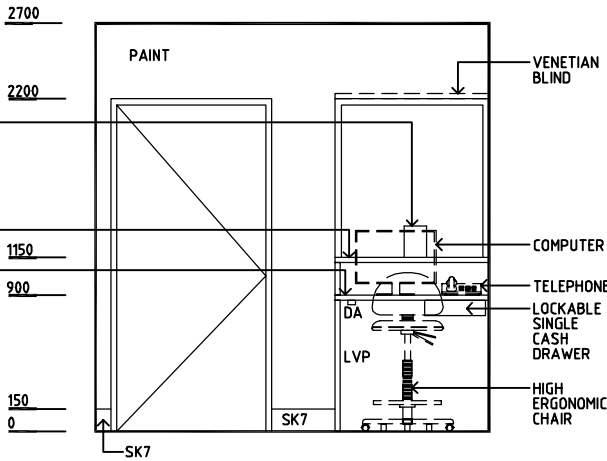
TIMBER SKIRTING



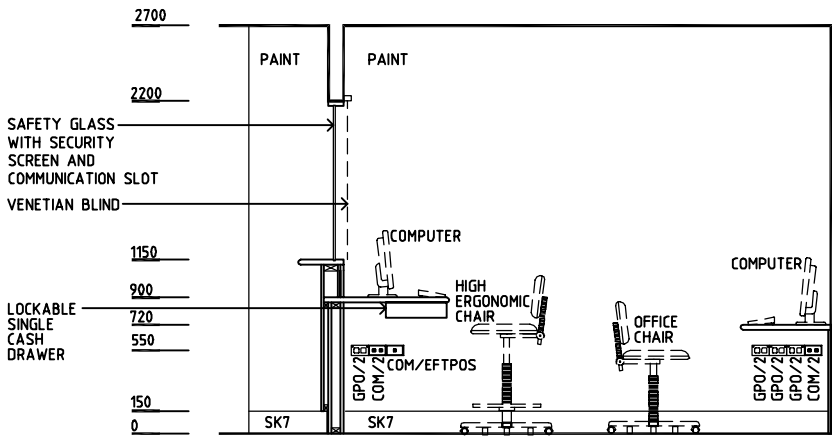
PLAN



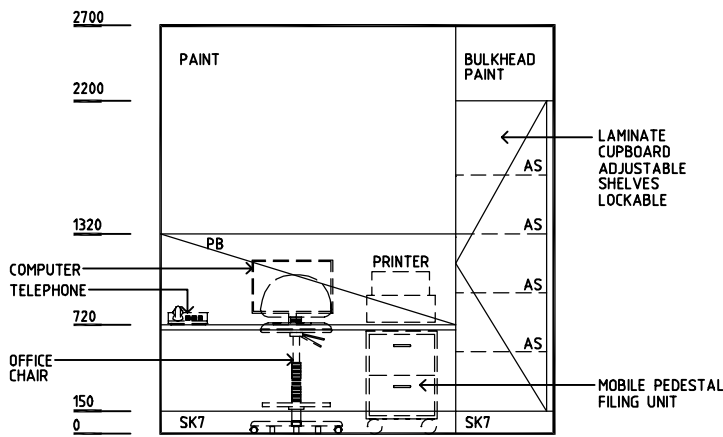
ELEVATION 1



ELEVATION 2




ELEVATION 3



ELEVATION 4

REV	DESCRIPTION	DATE	BY	REV	DESCRIPTION	DATE	BY	REV	DESCRIPTION	DATE	BY
1	FIRST ISSUE	14.03.2014	AA								

 <b>SHCC</b> Guidelines	Sharjah Health Facility Guidelines at: www.healthdesign.com.au/shccfig Editable version of Standard Components on Health Facility Briefing System (HFBS) at: www.healthdesign.com.au Provided by TAHPI				
	DESIGNED	APPROVED	DATE	SCALE(S)	SHEET
	CC	DB	30.12.13	1:50 in A3	1 of 1
	CAD FILE NAME CASH-SJ		PAPER DRAWING ID CASH-SJ		ISSUE 1