

SHARJAH HEALTHCARE CITY STANDARD COMPONENTS

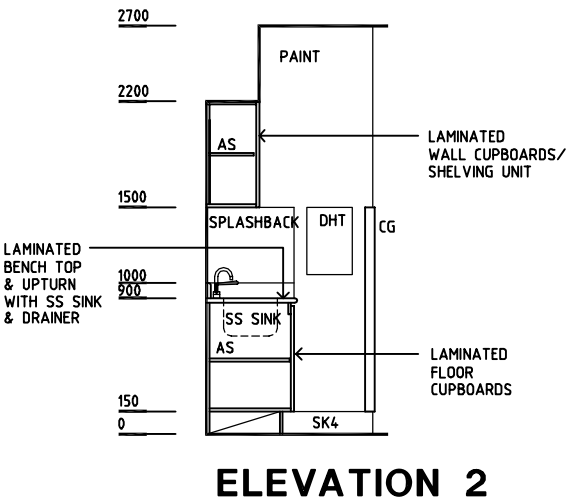
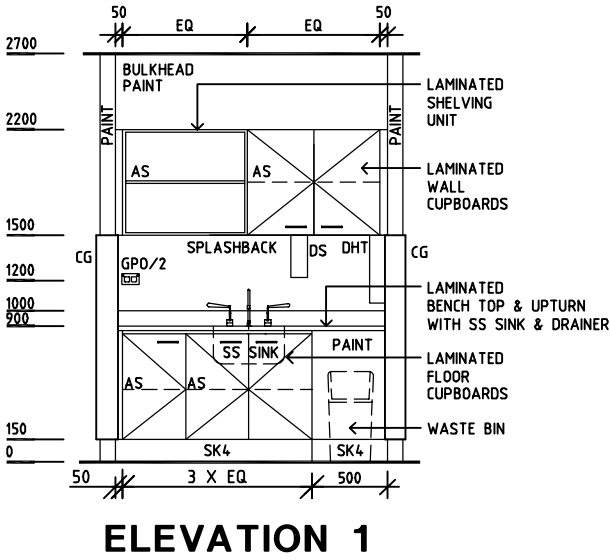
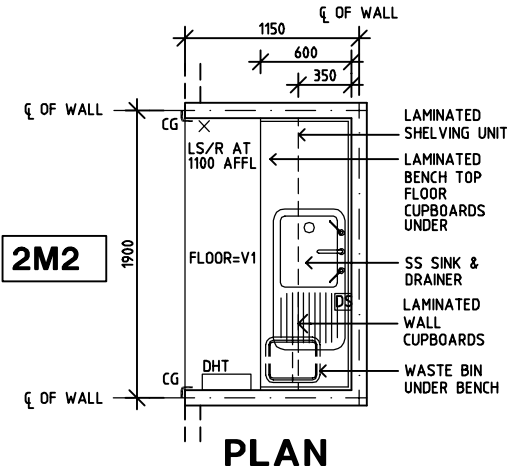
Room Layout Sheet

Room Name

Bay - Flowers, Open Plan

RLS Room Code BFLW-OP-SJ  
RDS Room Code BFLW-OP-SJ

- AS
- CG
- DHT
- DP
- DS
- GPO/2
- LS/R
- SK4
- SS
- V1
- ADJUSTABLE SHELF
- CORNER GUARD
- DISPENSER - HAND TOWEL
- DOOR AND FRAME PROTECTION
- DISPENSER - SOAP
- GENERAL POWER OUTLET-DOUBLE
- LIGHT SWITCH - ROOM
- FLOOR VINYL COVERED
- STAINLESS STEEL
- VINYL FLOORING, STANDARD SLIP RESISTANT



REV	DESCRIPTION	DATE	BY	REV	DESCRIPTION	DATE	BY	REV	DESCRIPTION	DATE	BY
1	FIRST ISSUE	14.03.2014	AA								

	Sharjah Health Facility Guidelines at: www.healthdesign.com.au/shccfig Editable version of Standard Components on Health Facility Briefing System (HFBS) at: www.healthdesign.com.au Provided by TAHPI							DESIGNED	APPROVED	DATE	SCALE(S)	SHEET
								CC	DB	30.12.13	1:50 in A3	1 of 1
								CAD FILE NAME	PAPER DRAWING ID	ISSUE		
								BFLW-OP-SJ	BFLW-OP-SJ	1		