

SHARJAH HEALTHCARE CITY STANDARD COMPONENTS

Room Layout Sheet

Room Name Bay - Flowers, Enclosed

RLS Room Code BFLW-ENC-SJ  
RDS Room Code BFLW-ENC-SJ

- AS

DHT

DP

DS

GPO/2

LS/R

OP

SK4

SS

V1
- ADJUSTABLE SHELF

DISPENSER - HAND TOWEL

DOOR AND FRAME PROTECTION

DISPENSER - SOAP

GENERAL POWER OUTLET-DOUBLE

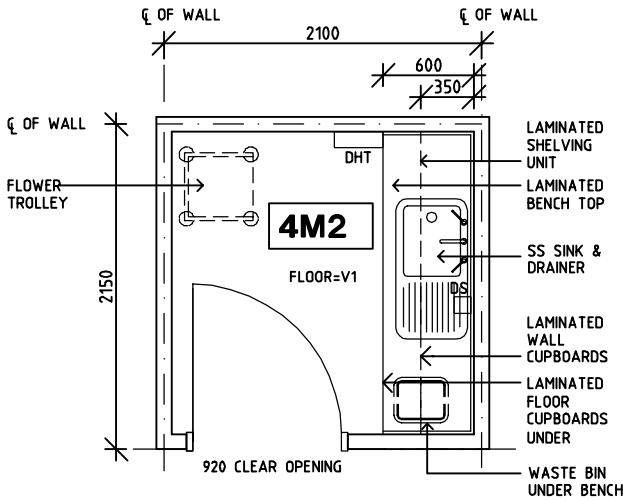
LIGHT SWITCH - ROOM

OBSERVATION PANEL

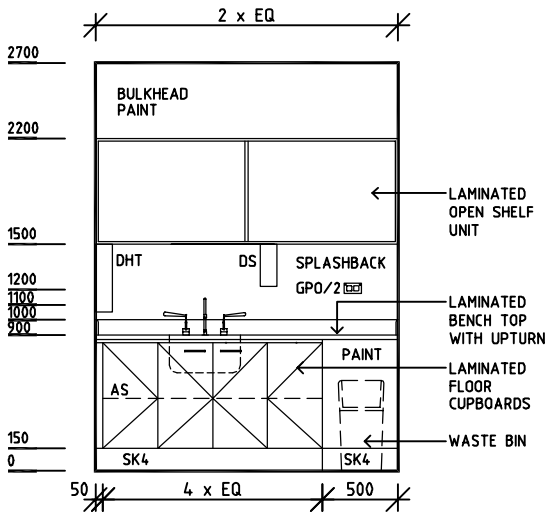
FLOOR VINYL COVED

STAINLESS STEEL

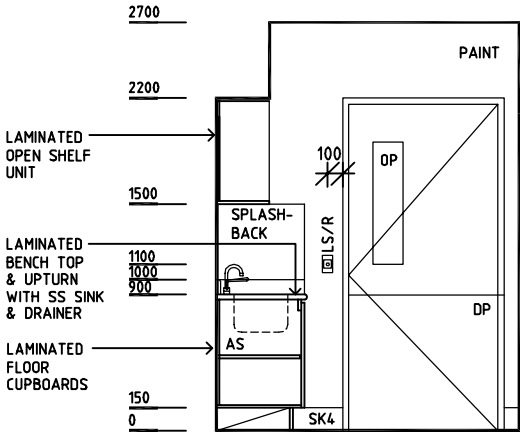
VINYL FLOORING, STANDARD



PLAN



ELEVATION 1



ELEVATION 2

REV	DESCRIPTION	DATE	BY	REV	DESCRIPTION	DATE	BY	REV	DESCRIPTION	DATE	BY
1	FIRST ISSUE	14.03.2014	AA								

 <b>SHCC</b> Guidelines	Sharjah Health Facility Guidelines at: <a href="http://www.healthdesign.com.au/shccfg">www.healthdesign.com.au/shccfg</a> Editable version of Standard Components on Health Facility Briefing System (HFBS) at: <a href="http://www.healthdesign.com.au">www.healthdesign.com.au</a> Provided by TAHPI			DESIGNED	APPROVED	DATE	SCALE(S)	SHEET
	CC	DB	30.12.13	1:50 in A3	1 of 1			
	CAD FILE NAME BFLW-ENC-SJ		PAPER DRAWING ID BFLW-ENC-SJ		ISSUE 1			