

SHARJAH HEALTHCARE CITY STANDARD COMPONENTS

Room Layout Sheet

Room Name

Assembly / Preparation (Pharmacy), 20m2

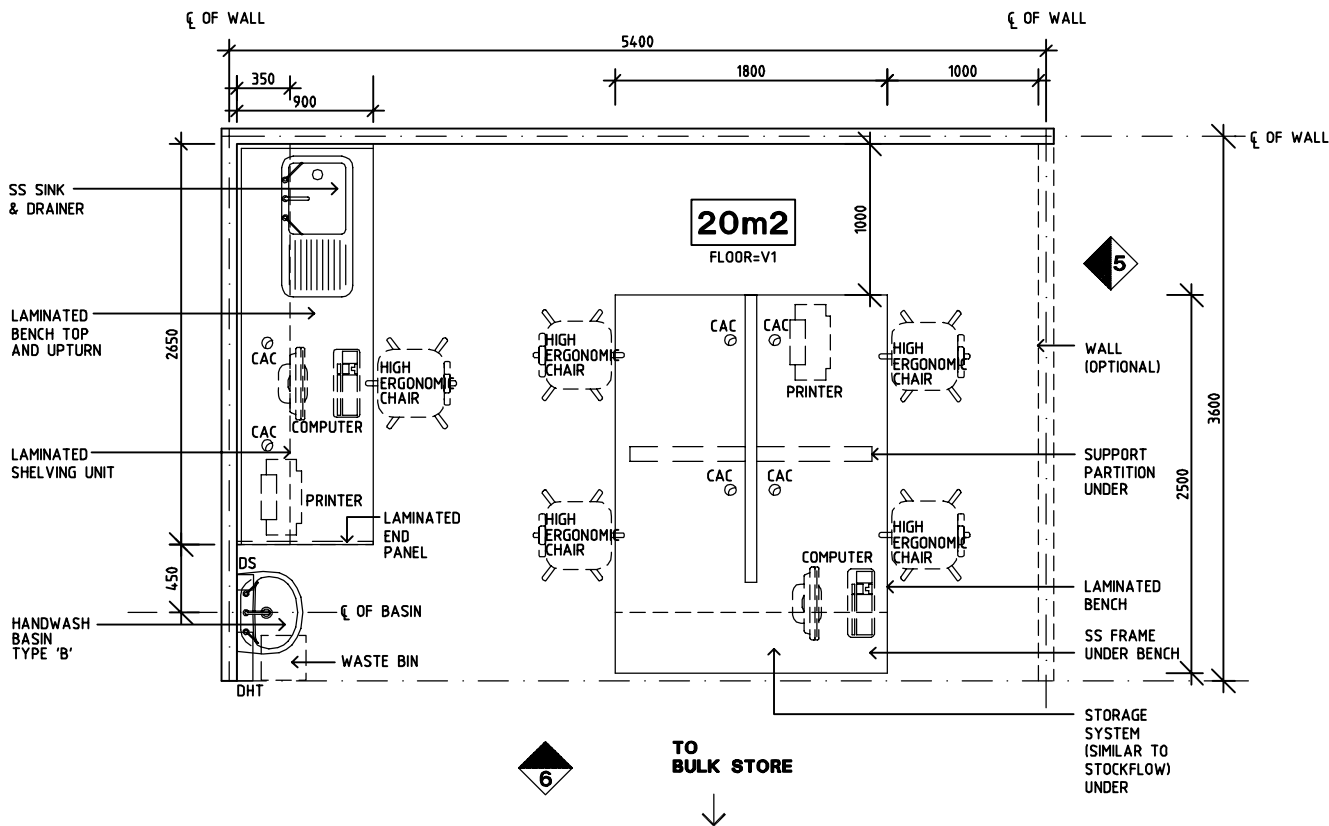
RLS Room Code

ASPR-20-SJ

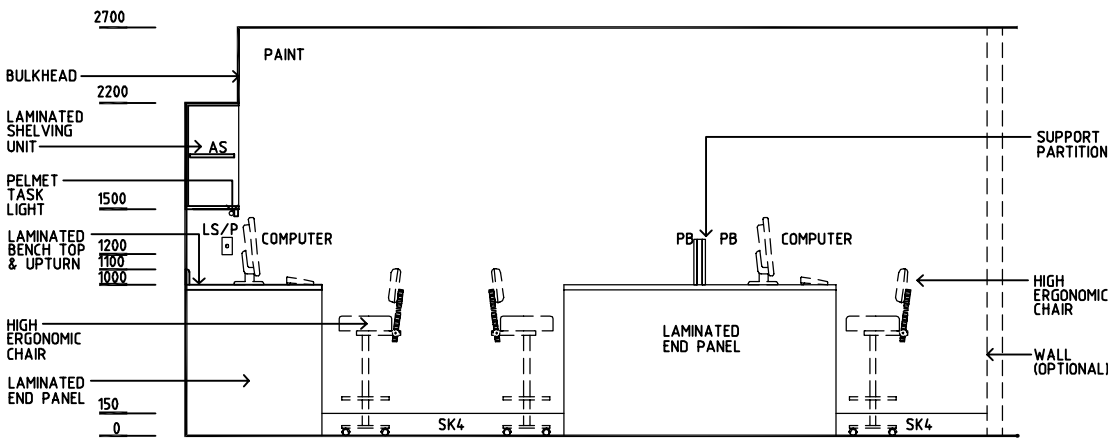
RDS Room Code

ASPR-20-SJ

AS	ADJUSTABLE SHELVES
CAC	CABLE ACCESS CAP
COM/2	COMMUNICATION OUTLET - DOUBLE
DHT	DISPENSER - HAND TOWEL
DS	DISPENSER - SOAP
GPO/2	GENERAL POWER OUTLET - DOUBLE
LS/P	LIGHT SWITCH - PELMET TASK LIGHT
LVP	LAMINATED VERTICAL SUPPORT PANEL
PB	PINBOARD
SK4	FLOOR VINYL COVERED SKIRTING
SS	STAINLESS STEEL
V1	VINYL FLOORING, STANDARD SLIP RESISTANT




PLAN



ELEVATION 1

REV	DESCRIPTION	DATE	BY	REV	DESCRIPTION	DATE	BY	REV	DESCRIPTION	DATE	BY
1	FIRST ISSUE	14.03.2014	AA								

	<h1>SHCC Guidelines</h1>	Sharjah Health Facility Guidelines at: <a href="http://www.healthdesign.com.au/shcc/hfg">www.healthdesign.com.au/shcc/hfg</a> Editable version of Standard Components on Health Facility Briefing System (HFBS) at: <a href="http://www.healthdesign.com.au">www.healthdesign.com.au</a> Provided by TAHPI	DESIGNED	APPROVED	DATE	SCALE(S)	SHEET
			CC	DB	30.12.13	1:50 in A3	1 of 2
			CAD FILE NAME ASPR-20-SJ		PAPER DRAWING ID ASPR-20-SJa		ISSUE 1

SHARJAH HEALTHCARE CITY STANDARD COMPONENTS

Room Layout Sheet

Room Name

Assembly / Preparation (Pharmacy), 20m2

RLS Room Code

ASPR-20-SJ

RDS Room Code

ASPR-20-SJ

- AS

CAC

COM/2

DHT

DS

GPO/2

LS/P

LVP

PB

SK4

SS

V1
- ADJUSTABLE SHELVES

CABLE ACCESS CAP

COMMUNICATION OUTLET - DOUBLE

DISPENSER - HAND TOWEL

DISPENSER - SOAP

GENERAL POWER OUTLET - DOUBLE

LIGHT SWITCH - PELMET TASK LIGHT

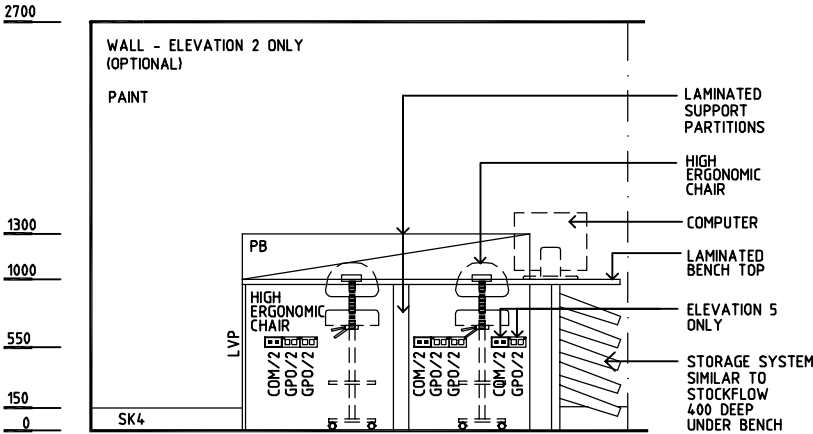
LAMINATED VERTICAL SUPPORT PANEL

PINBOARD

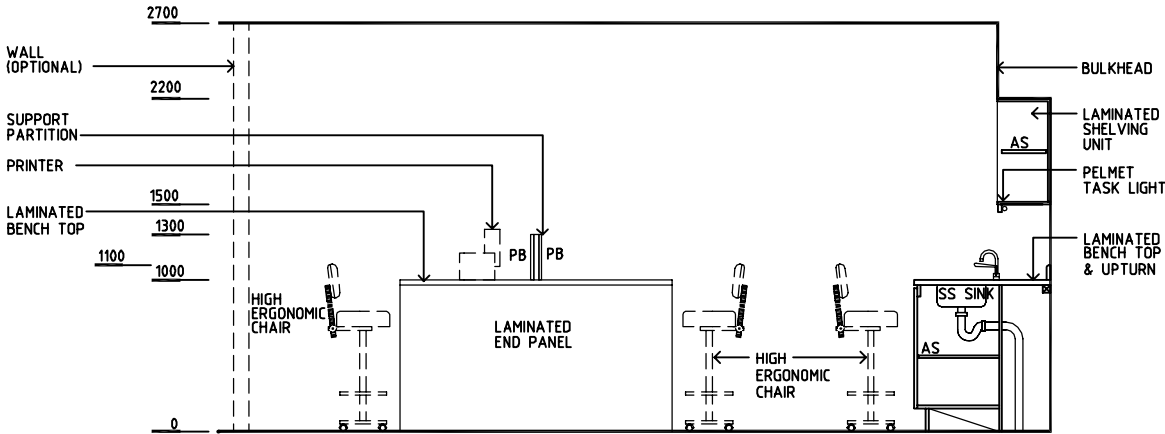
FLOOR VINYL COVED SKIRTING

STAINLESS STEEL

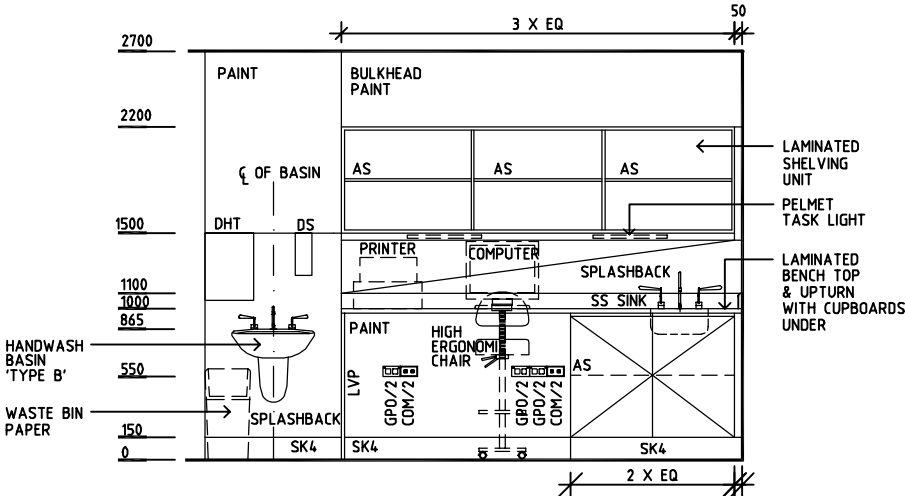
VINYL FLOORING, STANDARD SLIP RESISTANT



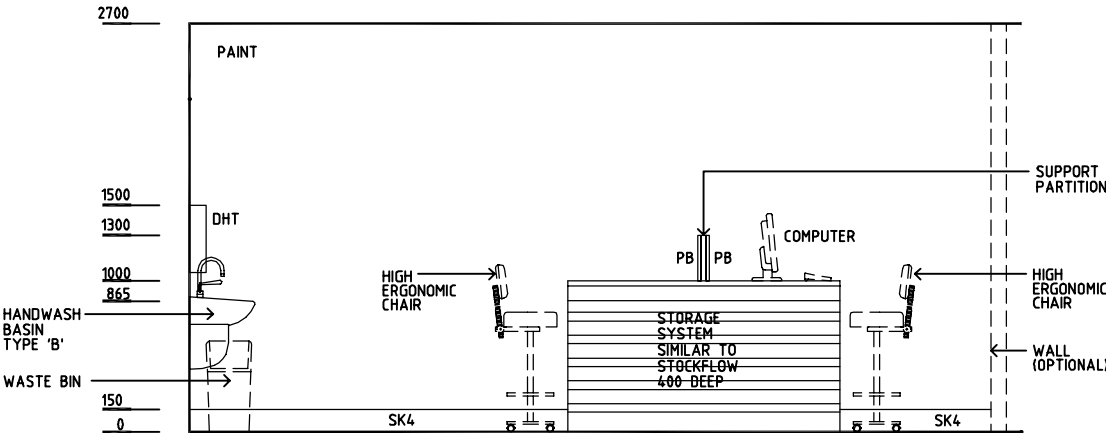
ELEVATION 2 + 5 SIMILAR (MIRRORED)



ELEVATION 3



ELEVATION 4



ELEVATION 6

REV	DESCRIPTION	DATE	BY	REV	DESCRIPTION	DATE	BY	REV	DESCRIPTION	DATE	BY
1	FIRST ISSUE	14.03.2014	AA								

	<div>Sharjah Health Facility Guidelines at: www.healthdesign.com.au/shccfg Editable version of Standard Components on Health Facility Briefing System (HFBS) at: www.healthdesign.com.au Provided by TAHPI</div>					DESIGNED	APPROVED	DATE	SCALE(S)	SHEET
						CC	DB	30.12.13	1:50 in A3	2 of 2
						CAD FILE NAME ASPR-20-SJ		PAPER DRAWING ID ASPR-20-SJb		ISSUE 1