

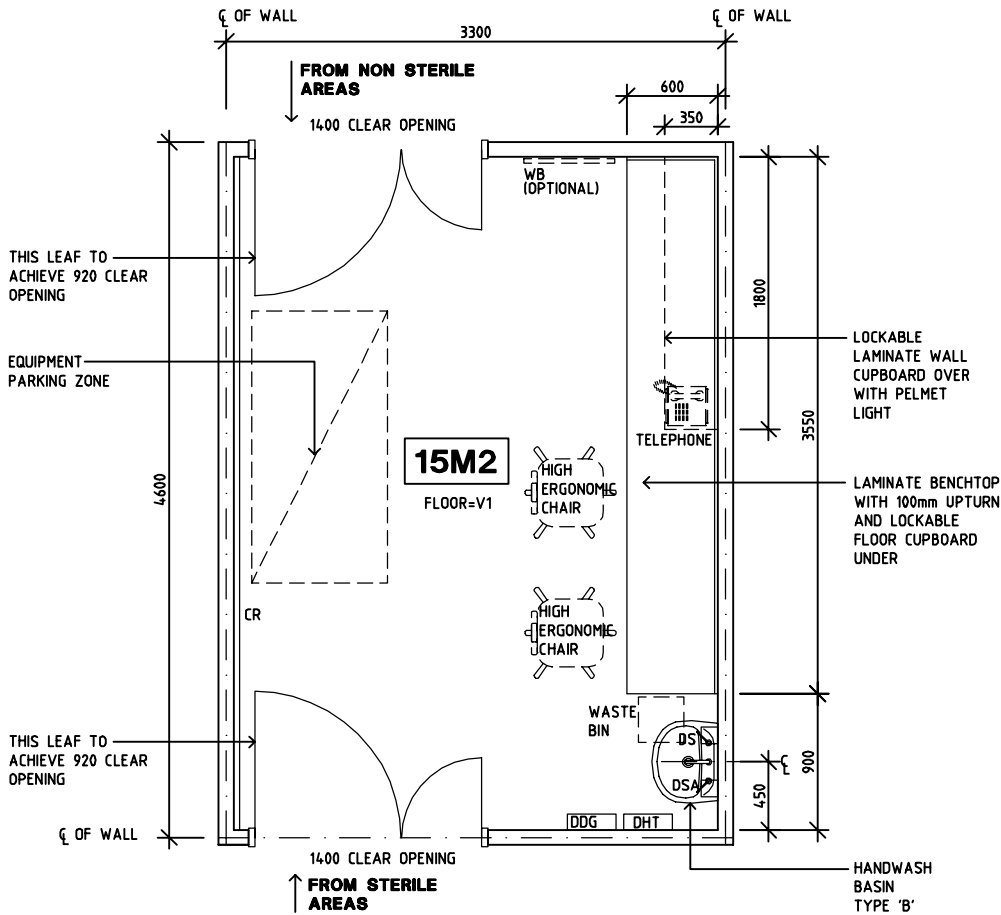
SHARJAH HEALTHCARE CITY STANDARD COMPONENTS

Room Layout Sheet

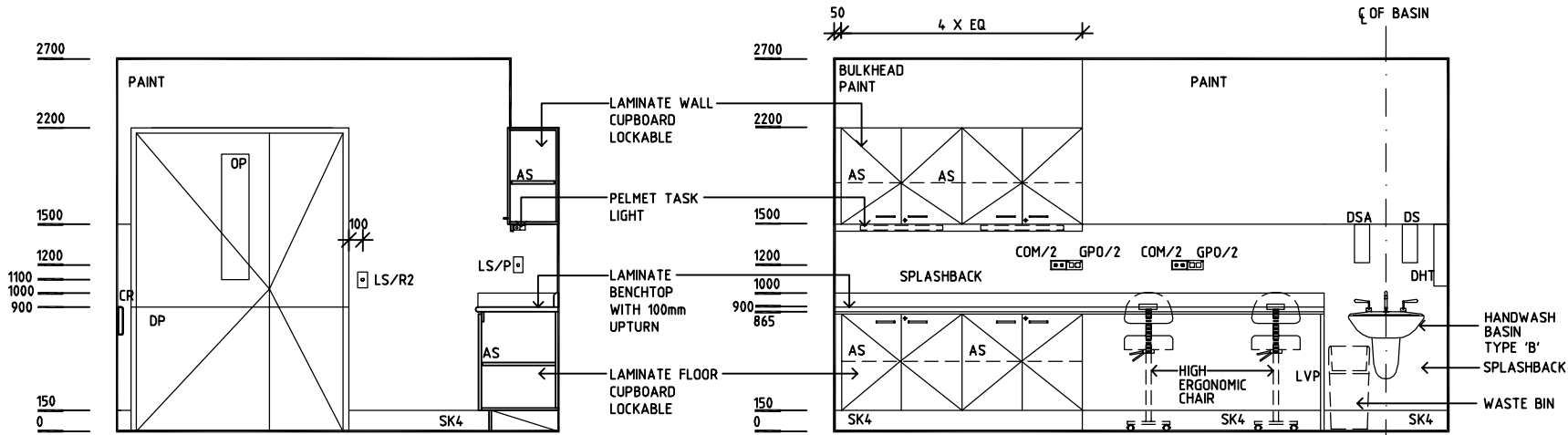
Room Name Anaesthetic Workroom

RLS Room Code ANWM-SJ  
RDS Room Code ANWM-SJ

- AS
- COM/2
- CR
- DDG
- DHT
- DP
- DS
- DSA
- GP0/2
- LS/R2
- LS/P
- LVP
- MA
- N2O
- O2
- OP
- S
- SC
- SK4
- V1
- WB
- ADJUSTABLE SHELF
- COMMUNICATION OUTLET-DOUBLE
- CRASH RAIL
- DISPENSER - DISPOSABLE GLOVE
- DISPENSER - HAND TOWEL
- DOOR AND DOOR FRAME PROTECTION
- DISPENSER - SOAP
- DISPENSER - SOAP ANTISEPTIC
- GENERAL PURPOSE OUTLET- DOUBLE
- LIGHT SWITCH - ROOM, 2 WAY
- LIGHT SWITCH, PELMET
- LAMINATE VERTICAL SUPPORT PANEL
- MEDICAL AIR
- NITROUS OXIDE
- OXYGEN
- OBSERVATION PANEL
- SUCTION
- SCAVENGE
- FLOOR VINYL COVERED SKIRTING
- VINYL FLOORING, STANDARD
- WHITE BOARD

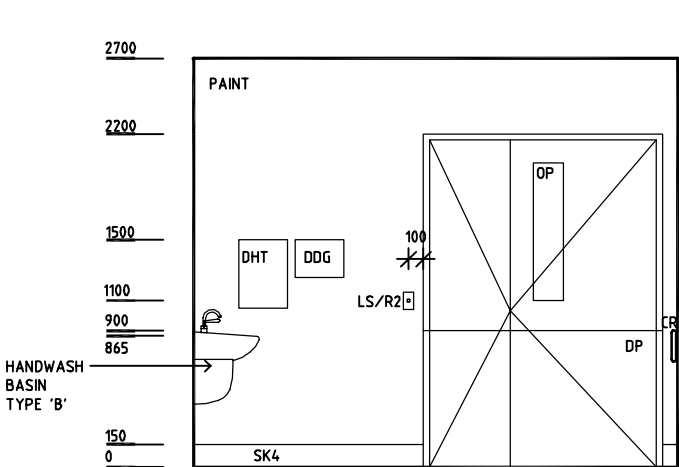


PLAN

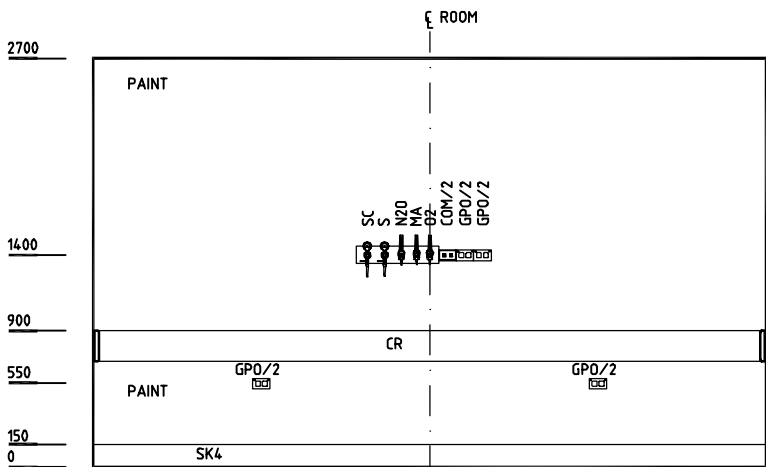


ELEVATION 1

ELEVATION 2



ELEVATION 3



ELEVATION 4

REV	DESCRIPTION	DATE	BY	REV	DESCRIPTION	DATE	BY	REV	DESCRIPTION	DATE	BY
1	FIRST ISSUE	14.03.2014	AA								

 <b>SHCC</b> Guidelines	Sharjah Health Facility Guidelines at: www.healthdesign.com.au/shccfg Editable version of Standard Components on Health Facility Briefing System (HFBS) at: www.healthdesign.com.au Provided by TAHPI		DESIGNED	APPROVED	DATE	SCALE(S)	SHEET
	CC	DB	30.12.13	1:50 in A3	1 of 1		
	CAD FILE NAME ANWM-SJ		PAPER DRAWING ID ANWM-SJ		ISSUE 1		