

SHARJAH HEALTHCARE CITY STANDARD COMPONENTS

Room Layout Sheet

Room Name

Angiography Sterile Store/ Set-up

RLS Room Code

ANSS-SJ

RDS Room Code

ANSS-SJ

- AS

COM/2

DDG

DHT

DP

DS

DSA

FS

GPO/1

GPO/2

LS/R

LS/P

OP

SK4

V1
- ADJUSTABLE SHELF

COMMUNICATION OUTLET-DOUBLE

DISPENSER - DISPOSABLE GLOVES

DISPENSER - HAND TOWEL

DISPENSER - SOAP

DISPENSER - SOAP ANTISEPTIC

FIXED SHELF

GENERAL POWER OUTLET- SINGLE

GENERAL POWER OUTLET- DOUBLE

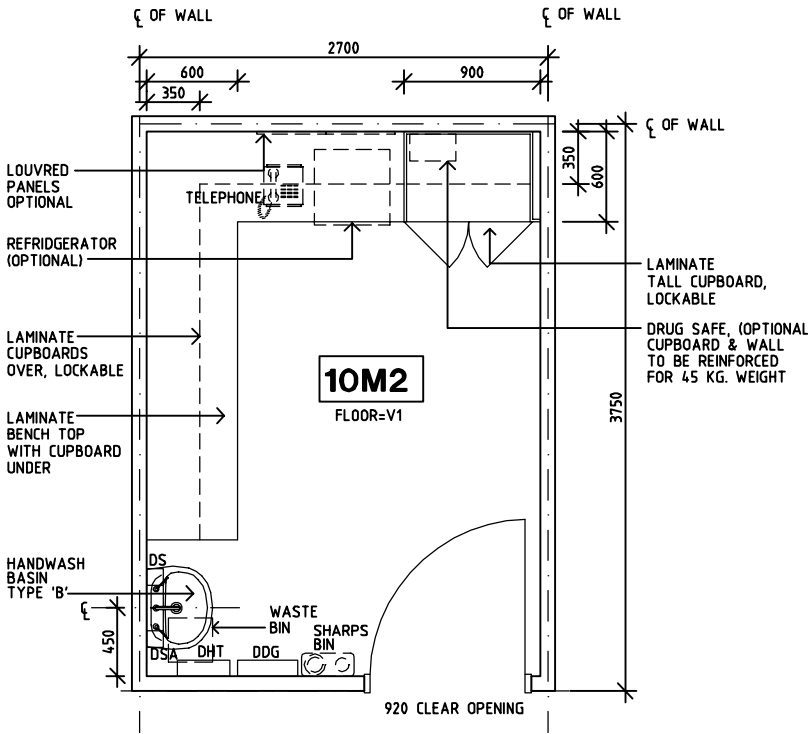
LIGHT SWITCH - ROOM

LIGHT SWITCH - PELMET TASK LIGHT

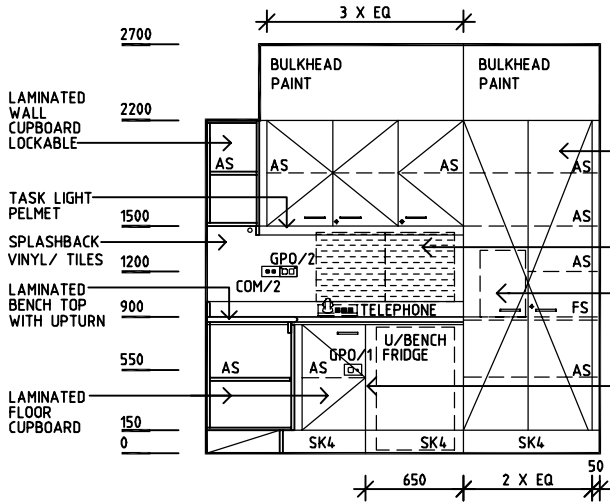
OBSERVATION PANEL

FLOOR VINYL COVED SKIRTING

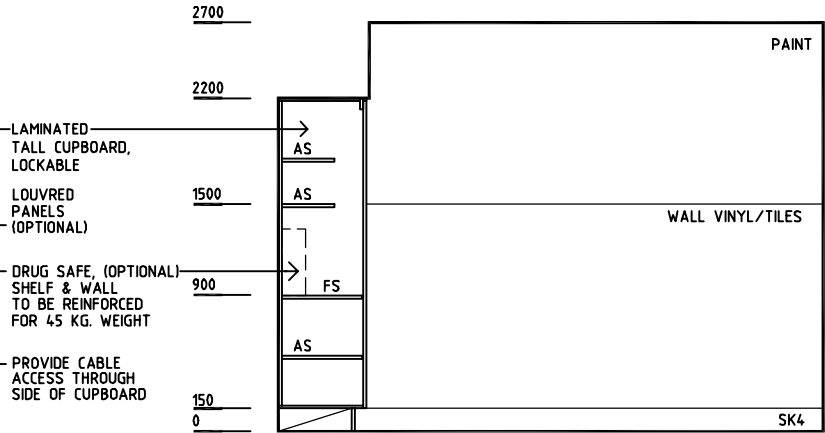
VINYL FLOORING, STANDARD SLIP RESISTANT



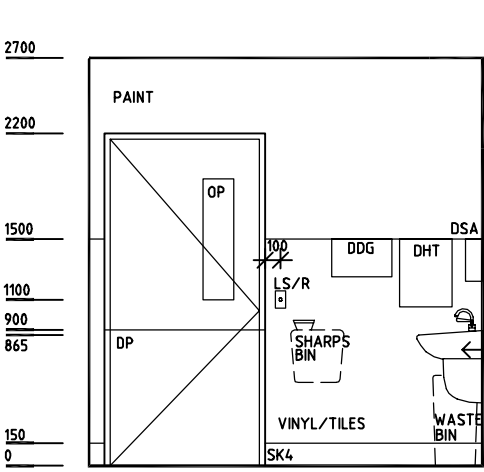
PLAN



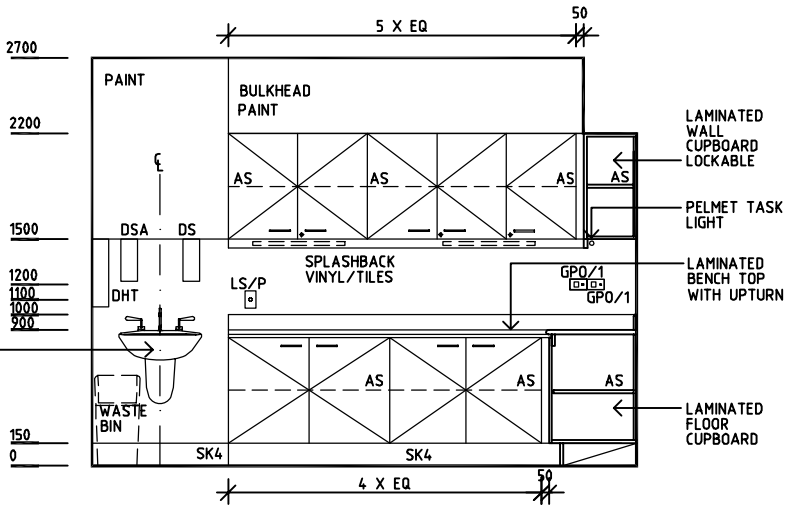
ELEVATION 1



ELEVATION 2



ELEVATION 3



ELEVATION 4

REV	DESCRIPTION	DATE	BY	REV	DESCRIPTION	DATE	BY	REV	DESCRIPTION	DATE	BY
1	FIRST ISSUE	14.03.2014	AA								

	<h1>SHCC Guidelines</h1>	<p>Sharjah Health Facility Guidelines at: www.healthdesign.com.au/shccfg Editable version of Standard Components on Health Facility Briefing System (HFBS) at: www.healthdesign.com.au Provided by TAHPI</p>	DESIGNED	APPROVED	DATE	SCALE(S)	SHEET
			CC	DB	30.12.13	1:50 in A3	1 of 1
			CAD FILE NAME ANSS-SJ		PAPER DRAWING ID ANSS-SJ		ISSUE 1