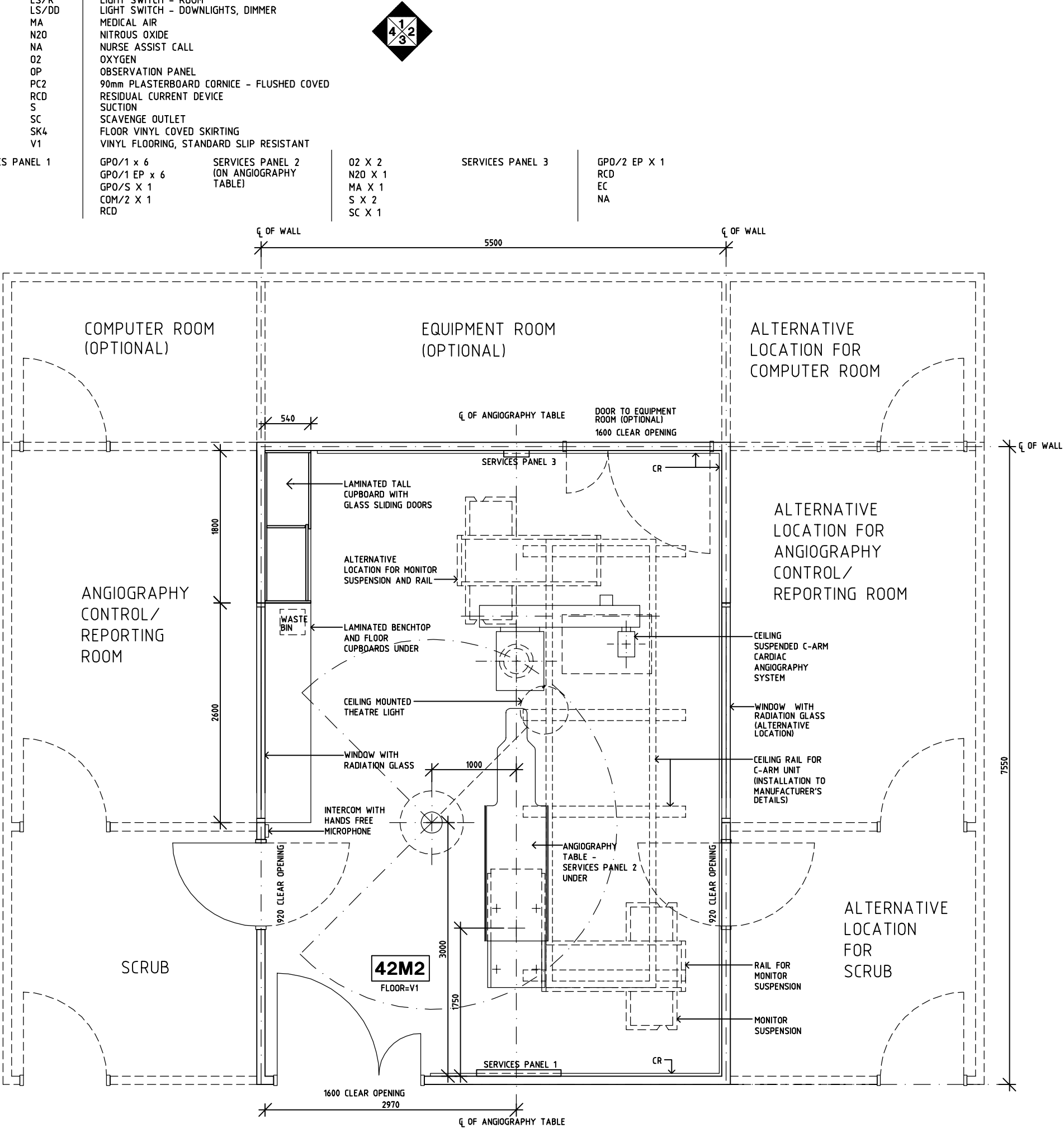


SHARJAH HEALTHCARE CITY STANDARD COMPONENTS

Room Layout Sheet


Room Name	Angiography Procedure Room	RLS Room Code	ANPR-SJ
		RDS Room Code	ANPR-SJ

AS	ADJUSTABLE SHELF
COM/2	COMMUNICATION OUTLET - DOUBLE
CR	CRASH RAIL
DP	DOOR AND DOOR FRAME PROTECTION
EC	EMERGENCY CALL
FS	FIXED SHELF
GP0/1	GENERAL POWER OUTLET - SINGLE
GP0/1 EP	EMERGENCY POWER OUTLET - SINGLE
GP0/2 EP	EMERGENCY POWER OUTLET - DOUBLE
GP0/C	GENERAL POWER OUTLET - CLEANER'S
GP0/S	GENERAL POWER OUTLET - SPECIAL SINGLE
LS/R	LIGHT SWITCH - ROOM
LS/DD	LIGHT SWITCH - DOWNLIGHTS, DIMMER
MA	MEDICAL AIR
N2O	NITROUS OXIDE
NA	NURSE ASSIST CALL
O2	OXYGEN
OP	OBSERVATION PANEL
PC2	90mm PLASTERBOARD CORNICE - FLUSHED COVERED
RCD	RESIDUAL CURRENT DEVICE
S	SUCTION
SC	SCAVENGE OUTLET
SK4	FLOOR VINYL COVERED SKIRTING
V1	VINYL FLOORING, STANDARD SLIP RESISTANT
SERVICES PANEL 1	GP0/1 x 6 GP0/1 EP x 6 GP0/S x 1 COM/2 x 1 RCD
SERVICES PANEL 2 (ON ANGIOGRAPHY TABLE)	GP0/1 x 6 GP0/1 EP x 6 GP0/S x 1 COM/2 x 1 RCD
	O2 X 2 N2O X 1 MA X 1 S X 2 SC X 1
SERVICES PANEL 3	
	GP0/2 EP X 1 RCD EC NA



PLAN

REV	DESCRIPTION	DATE	BY	REV	DESCRIPTION	DATE	BY	REV	DESCRIPTION	DATE	BY
1	FIRST ISSUE	14.03.2014	AA								

 SHCC Guidelines	Sharjah Health Facility Guidelines at: www.healthdesign.com.au/shccfig Editable version of Standard Components on Health Facility Briefing System (HFBS) at: www.healthdesign.com.au Provided by TAHPI		DESIGNED	APPROVED	DATE	SCALE(S)	SHEET
			CC	DB	30.12.13	1:50 in A3	1 of 3
	CAD FILE NAME ANPR-SJ		PAPER DRAWING ID ANPR-SJa		ISSUE 1		

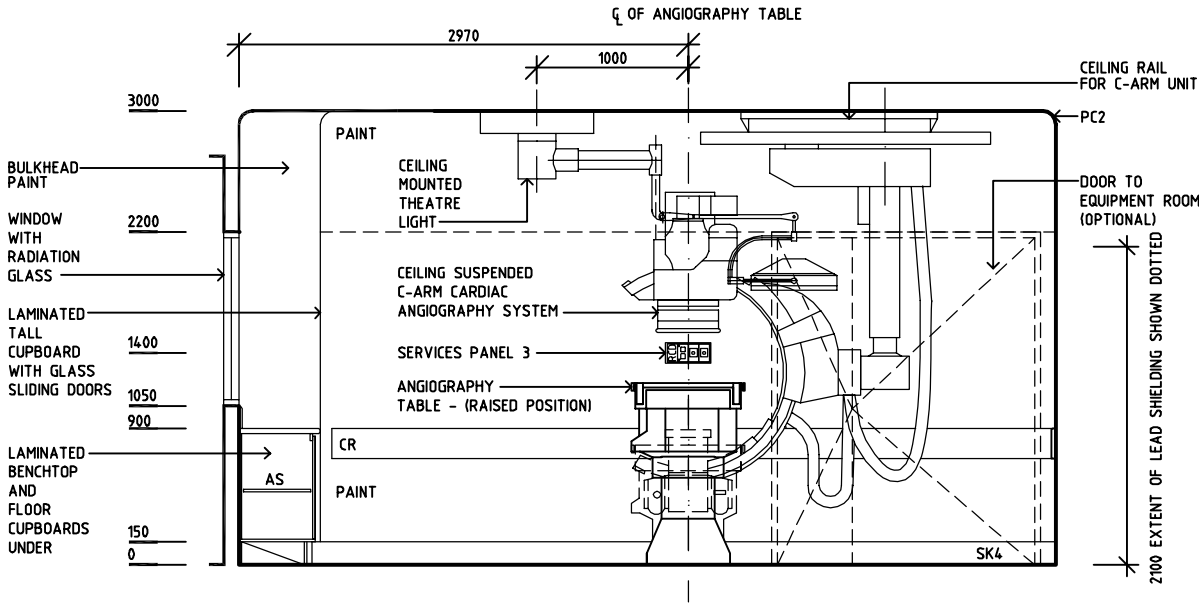
SHARJAH HEALTHCARE CITY STANDARD COMPONENTS

Room Layout Sheet

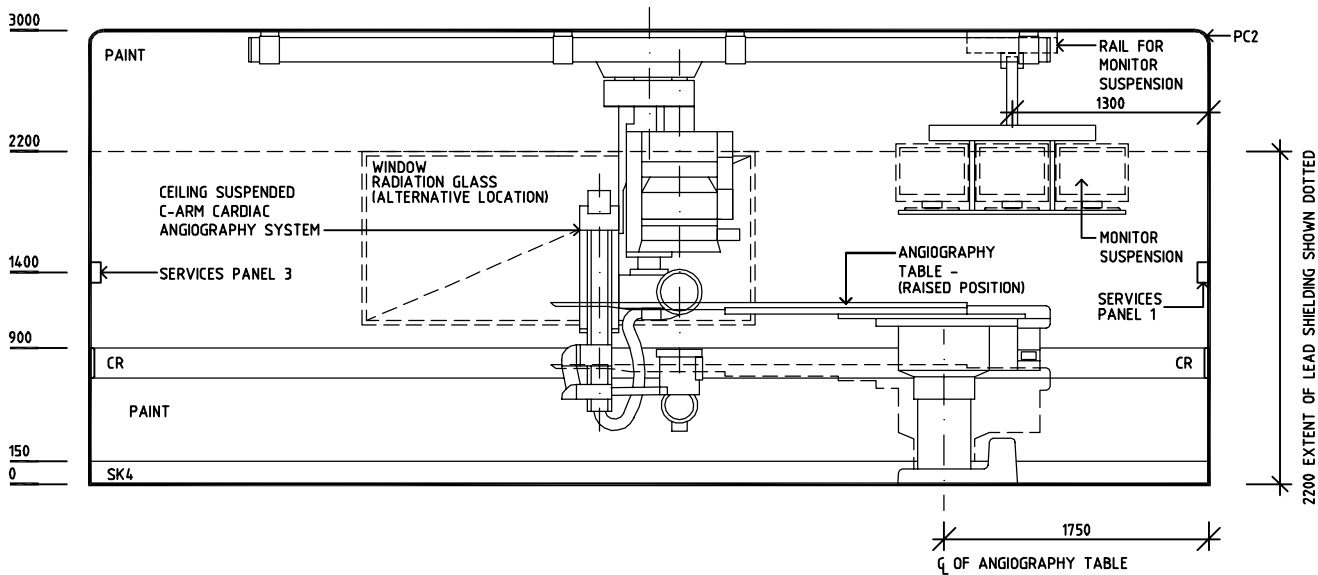
Room Name	Angiography Procedure Room	RLS Room Code	ANPR-SJ
		RDS Room Code	ANPR-SJ

AS	ADJUSTABLE SHELF
COM/2	COMMUNICATION OUTLET - DOUBLE
CR	CRASH RAIL
DP	DOOR AND DOOR FRAME PROTECTION
EC	EMERGENCY CALL
FS	FIXED SHELF
GP0/1	GENERAL POWER OUTLET - SINGLE
GP0/1 EP	EMERGENCY POWER OUTLET - SINGLE
GP0/2 EP	EMERGENCY POWER OUTLET - DOUBLE
GP0/C	GENERAL POWER OUTLET - CLEANER'S
GP0/S	GENERAL POWER OUTLET - SPECIAL SINGLE
LS/R	LIGHT SWITCH - ROOM
LS/DD	LIGHT SWITCH - DOWNLIGHTS, DIMMER
MA	MEDICAL AIR
N2O	NITROUS OXIDE
NA	NURSE ASSIST CALL
O2	OXYGEN
OP	OBSERVATION PANEL
PC2	90mm PLASTERBOARD CORNICE - FLUSHED COVERED
RCD	RESIDUAL CURRENT DEVICE
S	SUCTION
SC	SCAVENGE OUTLET
SK4	FLOOR VINYL COVERED SKIRTING
V1	VINYL FLOORING, STANDARD SLIP RESISTANT

SERVICES PANEL 1	GP0/1 x 6 GP0/1 EP x 6 GP0/S x 1 COM/2 x 1 RCD
SERVICES PANEL 2 (ON ANGIOGRAPHY TABLE)	O2 x 2 N2O x 1 MA x 1 S x 2 SC x 1
SERVICES PANEL 3	GP0/2 EP x 1 RCD EC NA



ELEVATION 1



ELEVATION 2

REV	DESCRIPTION	DATE	BY	REV	DESCRIPTION	DATE	BY	REV	DESCRIPTION	DATE	BY
1	FIRST ISSUE	14.03.2014	AA								

	<p>Sharjah Health Facility Guidelines at: www.healthdesign.com.au/shccfg Editable version of Standard Components on Health Facility Briefing System (HFBS) at: www.healthdesign.com.au Provided by TAHPI</p>							DESIGNED	APPROVED	DATE	SCALE(S)	SHEET
								CC	DB	30.12.13	1:50 in A3	2 of 3
								CAD FILE NAME ANPR-SJ		PAPER DRAWING ID ANPR-SJb		ISSUE 1

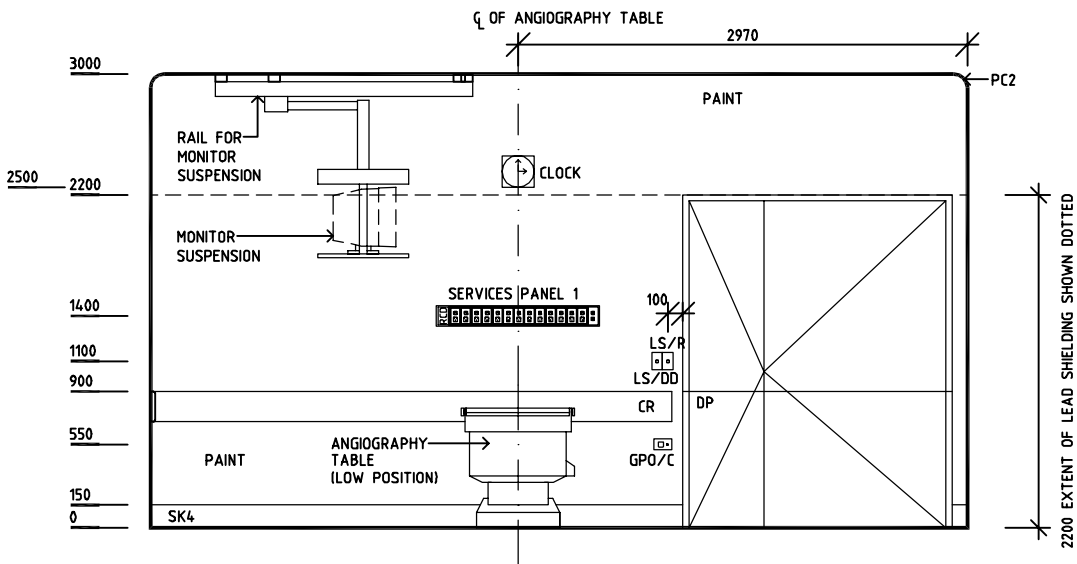
SHARJAH HEALTHCARE CITY STANDARD COMPONENTS

Room Layout Sheet

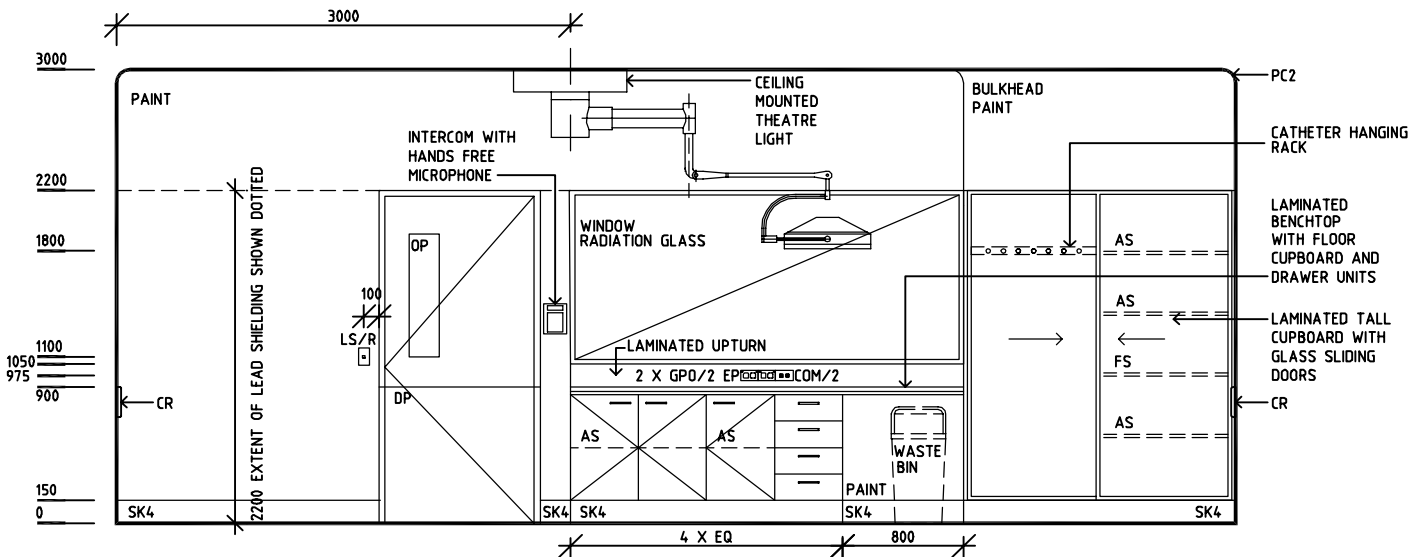
Room Name	Angiography Procedure Room	RLS Room Code	ANPR-SJ
		RDS Room Code	ANPR-SJ

AS	ADJUSTABLE SHELF
COM/2	COMMUNICATION OUTLET - DOUBLE
CR	CRASH RAIL
DP	DOOR AND DOOR FRAME PROTECTION
EC	EMERGENCY CALL
FS	FIXED SHELF
GPO/1	GENERAL POWER OUTLET - SINGLE
GPO/1 EP	EMERGENCY POWER OUTLET - SINGLE
GPO/2 EP	EMERGENCY POWER OUTLET - DOUBLE
GPO/C	GENERAL POWER OUTLET - CLEANER'S
GPO/S	GENERAL POWER OUTLET - SPECIAL SINGLE
LS/R	LIGHT SWITCH - ROOM
LS/DD	LIGHT SWITCH - DOWNLIGHTS, DIMMER
MA	MEDICAL AIR
N2O	NITROUS OXIDE
NA	NURSE ASSIST CALL
O2	OXYGEN
OP	OBSERVATION PANEL
PC2	90mm PLASTERBOARD CORNICE - FLUSHED COVERED
RCD	RESIDUAL CURRENT DEVICE
S	SUCTION
SC	SCAVENGE OUTLET
SK4	FLOOR VINYL COVERED SKIRTING
V1	VINYL FLOORING, STANDARD SLIP RESISTANT

SERVICES PANEL 1	GPO/1 x 6 GPO/1 EP x 6 GPO/S x 1 COM/2 x 1 RCD
SERVICES PANEL 2 (ON ANGIOGRAPHY TABLE)	O2 x 2 N2O x 1 MA x 1 S x 2 SC x 1
SERVICES PANEL 3	GPO/2 EP x 1 RCD EC NA



ELEVATION 3



ELEVATION 4

REV	DESCRIPTION	DATE	BY	REV	DESCRIPTION	DATE	BY	REV	DESCRIPTION	DATE	BY
1	FIRST ISSUE	14.03.2014	AA								

	Sharjah Health Facility Guidelines at: www.healthdesign.com.au/shccfg Editable version of Standard Components on Health Facility Briefing System (HFBS) at: www.healthdesign.com.au Provided by TAHPI							DESIGNED	APPROVED	DATE	SCALE(S)	SHEET
								CC	DB	30.12.13	1:50 in A3	3 of 3
								CAD FILE NAME ANPR-SJ	PAPER DRAWING ID ANPR-SJc		ISSUE 1	