

SHARJAH HEALTHCARE CITY STANDARD COMPONENTS

Room Layout Sheet

Room Name

Anaesthetic Induction Room

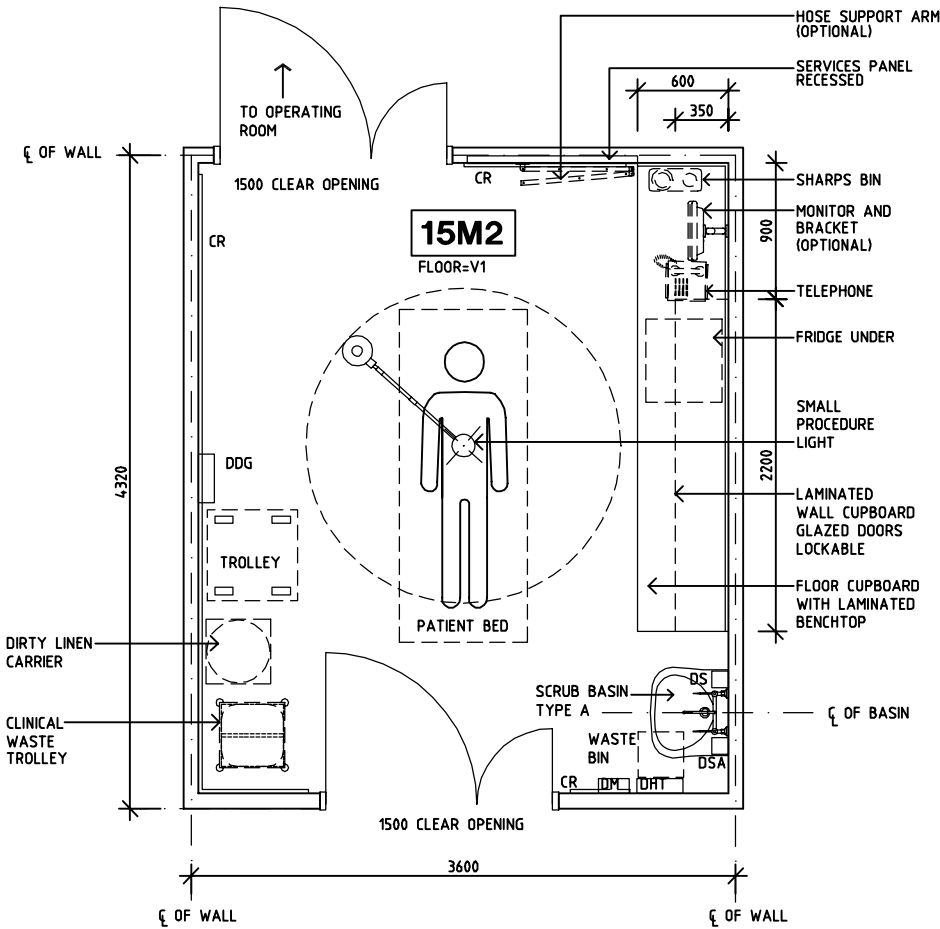
RLS Room Code

ANIN-SJ

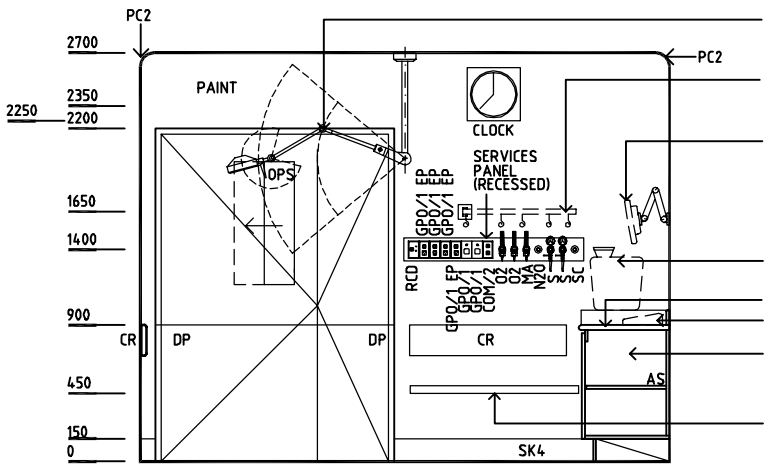
RDS Room Code

ANIN-SJ

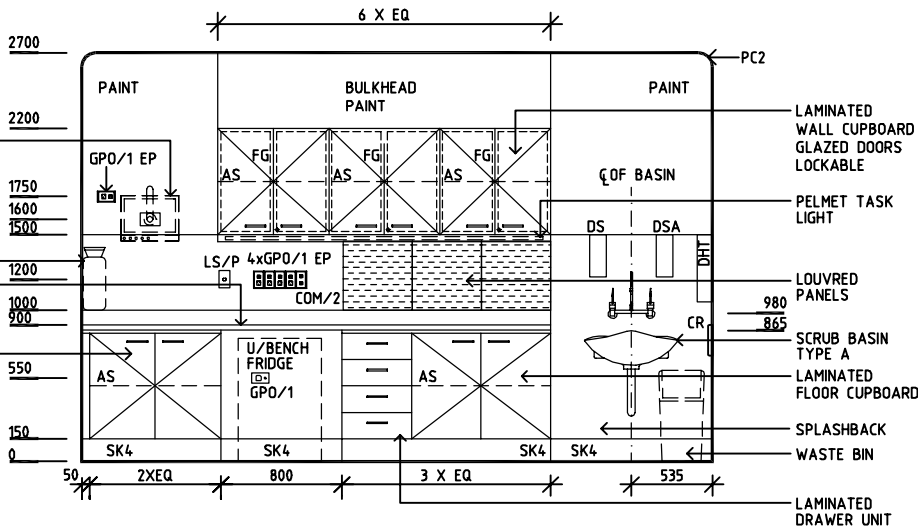
- AS
CR
COM/2
DDG
DHT
DM
DP
DS
DSA
DSA
EC
FG
GPO/1 EP
GPO/1
LS/P
LS/R
MA
NA
NC
N2O
O2
OC
OPS
PC2
RCD
S
SC
SK4
V1
- ADJUSTABLE SHELF
CRASH RAIL
COMMUNICATION OUTLET - DOUBLE
DISPENSER - DISPOSABLE GLOVES
DISPENSER - HAND TOWEL
DISPENSER - MASK
DOOR AND DOOR FRAME PROTECTION
DISPENSER - SOAP
DISPENSER - SOAP ANTISEPTIC
EMERGENCY CALL
FIXED GLASS
EMERGENCY POWER - SINGLE
GENERAL POWER OUTLET - SINGLE
LIGHT SWITCH - PELMET LIGHT
LIGHT SWITCH - ROOM
MEDICAL AIR
NURSE ASSIST CALL
PATIENT/NURSE CALL
NITROUS OXIDE
OXYGEN
ORDERLY/ PORTER CALL
OBSERVATION PANEL WITH SLIDING PANEL
PLASTERBOARD CORNICE FLUSH SET
RESIDUAL CURRENT DEVICE
SUCTION
SCAVENGE
FLOOR VINYL COVERED SKIRTING
VINYL FLOORING, STANDARD



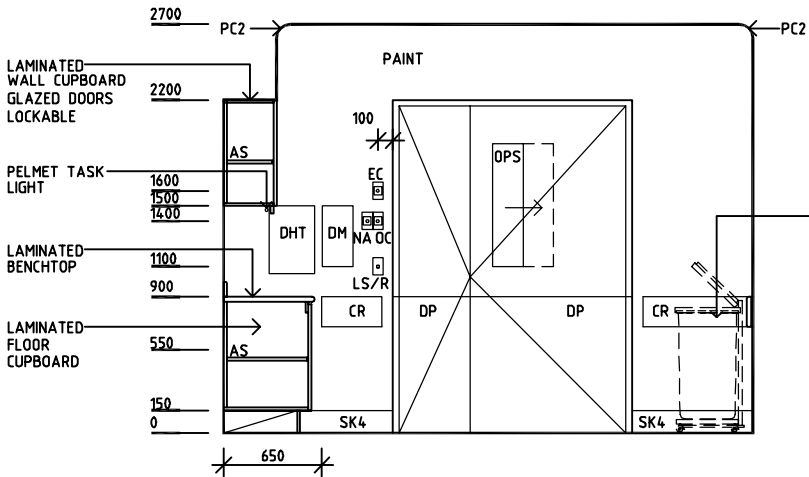
PLAN



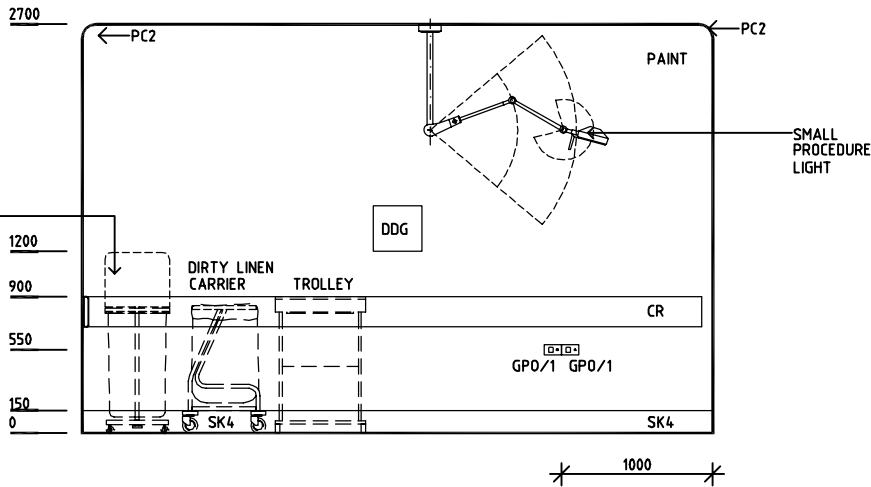
ELEVATION 1



ELEVATION 2



ELEVATION 3



ELEVATION 4

REV	DESCRIPTION	DATE	BY	REV	DESCRIPTION	DATE	BY	REV	DESCRIPTION	DATE	BY
1	FIRST ISSUE	14.03.2014	AA								

	<h1>SHCC Guidelines</h1>	<p>Sharjah Health Facility Guidelines at: www.healthdesign.com.au/shccfg Editable version of Standard Components on Health Facility Briefing System (HFBS) at: www.healthdesign.com.au Provided by TAHPI</p>	DESIGNED	APPROVED	DATE	SCALE(S)	SHEET
			CC	DB	30.12.13	1:50 in A3	1 of 1
			CAD FILE NAME ANIN-SJ		PAPER DRAWING ID ANIN-SJ		ISSUE 1