

SHARJAH HEALTHCARE CITY STANDARD COMPONENTS

Room Layout Sheet

Room Name	ADL Bathroom	RLS Room Code	ADLB-SJ
		RDS Room Code	ADLB-SJ

- COH

DDG

DHT

DP

DS

DTP

EC

FW

GPO/1

GPO/2

GR

LS/R

NA

NC

RCD

S/SH

SK4

V3

WC
- COAT HOOK

DISPENSER - DISPOSABLE GLOVE

DISPENSER - HAND TOWEL

DOOR AND DOOR FRAME PROTECTION

DISPENSER - SOAP

DISPENSER - TOILET PAPER

EMERGENCY CALL

FLOOR WASTE

GENERAL POWER OUTLET - SINGLE

GENERAL POWER OUTLET - DOUBLE

GRAB RAIL

LIGHT SWITCH - ROOM

NURSE ASSIST CALL

PATIENT/NURSE CALL

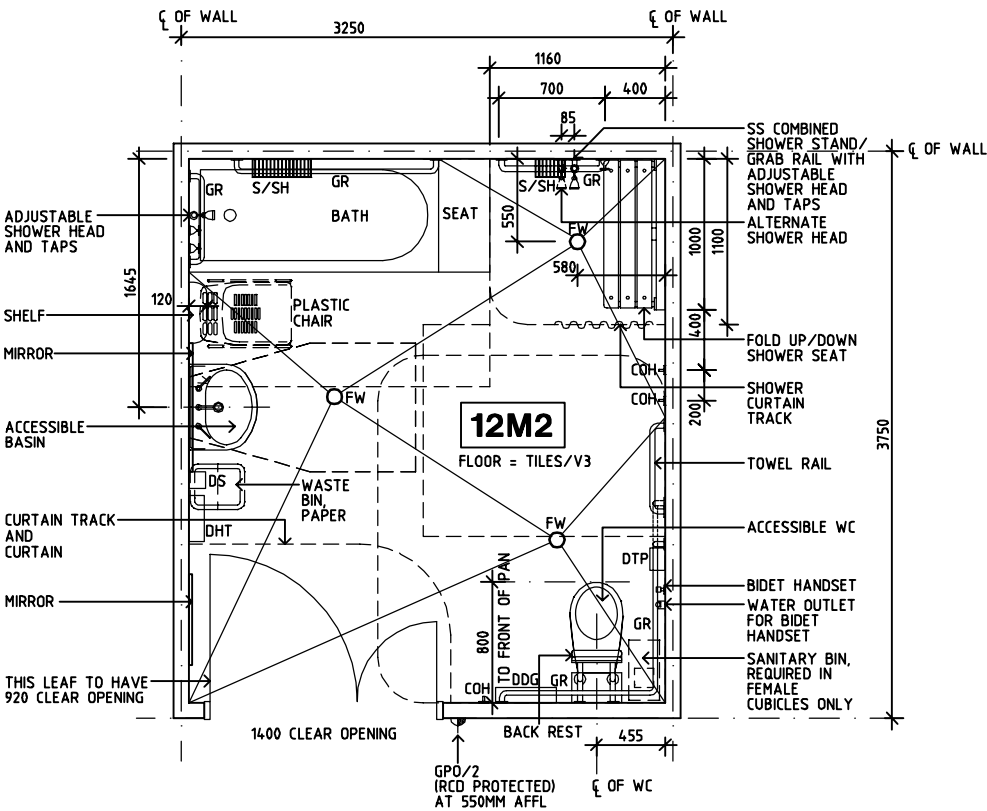
RESIDUAL CURRENT DEVICE

SOAP/SHAMPOO HOLDER

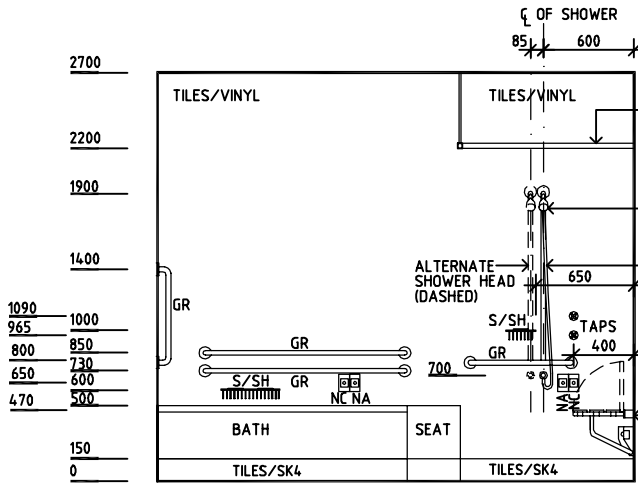
FLOOR VINYL COVERED SKIRTING

FLOOR VINYL, NON SLIP - STUDDED

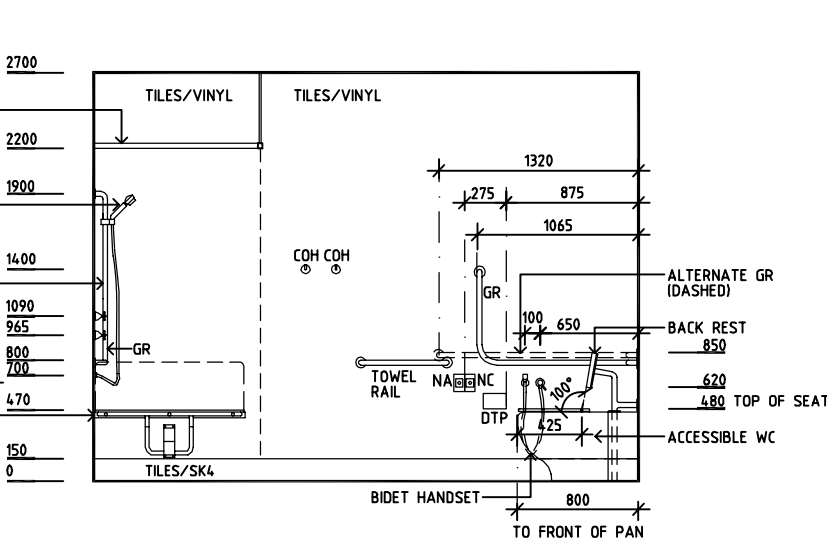
WATER CLOSET



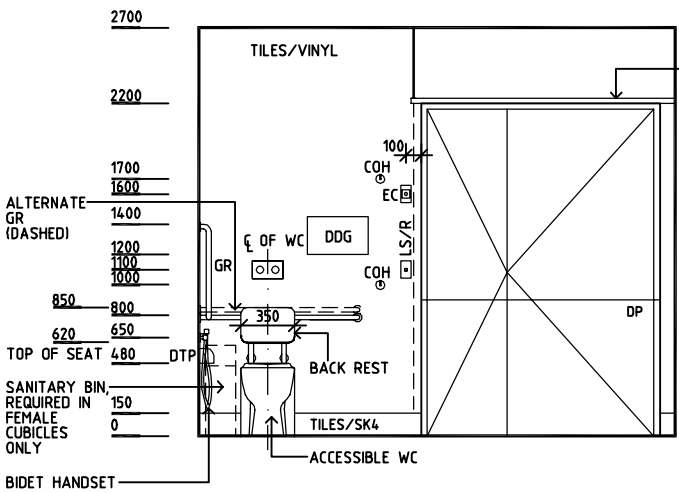
PLAN



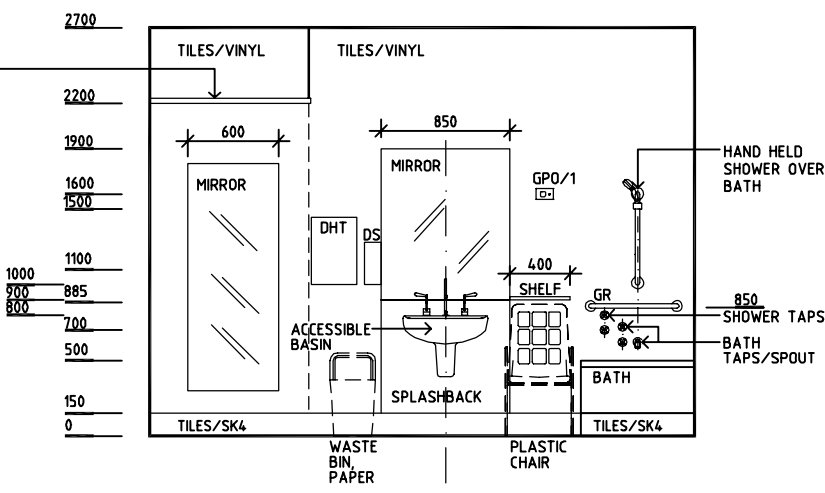
ELEVATION 1



ELEVATION 2



ELEVATION 3



ELEVATION 4

REV	DESCRIPTION	DATE	BY	REV	DESCRIPTION	DATE	BY	REV	DESCRIPTION	DATE	BY
1	FIRST ISSUE	14.03.2014	AA								

	SHCC Guidelines	Sharjah Health Facility Guidelines at: www.healthdesign.com.au/shcc/hfg Editable version of Standard Components on Health Facility Briefing System (HFBS) at: www.healthdesign.com.au Provided by TAHPI	DESIGNED	APPROVED	DATE	SCALE(S)	SHEET
			CC	DB	30.12.13	1:50 in A3	1 of 1
			CAD FILE NAME	PAPER DRAWING ID	ADLB-SJ	ADLB-SJ	ISSUE

This document is for advisory purpose only