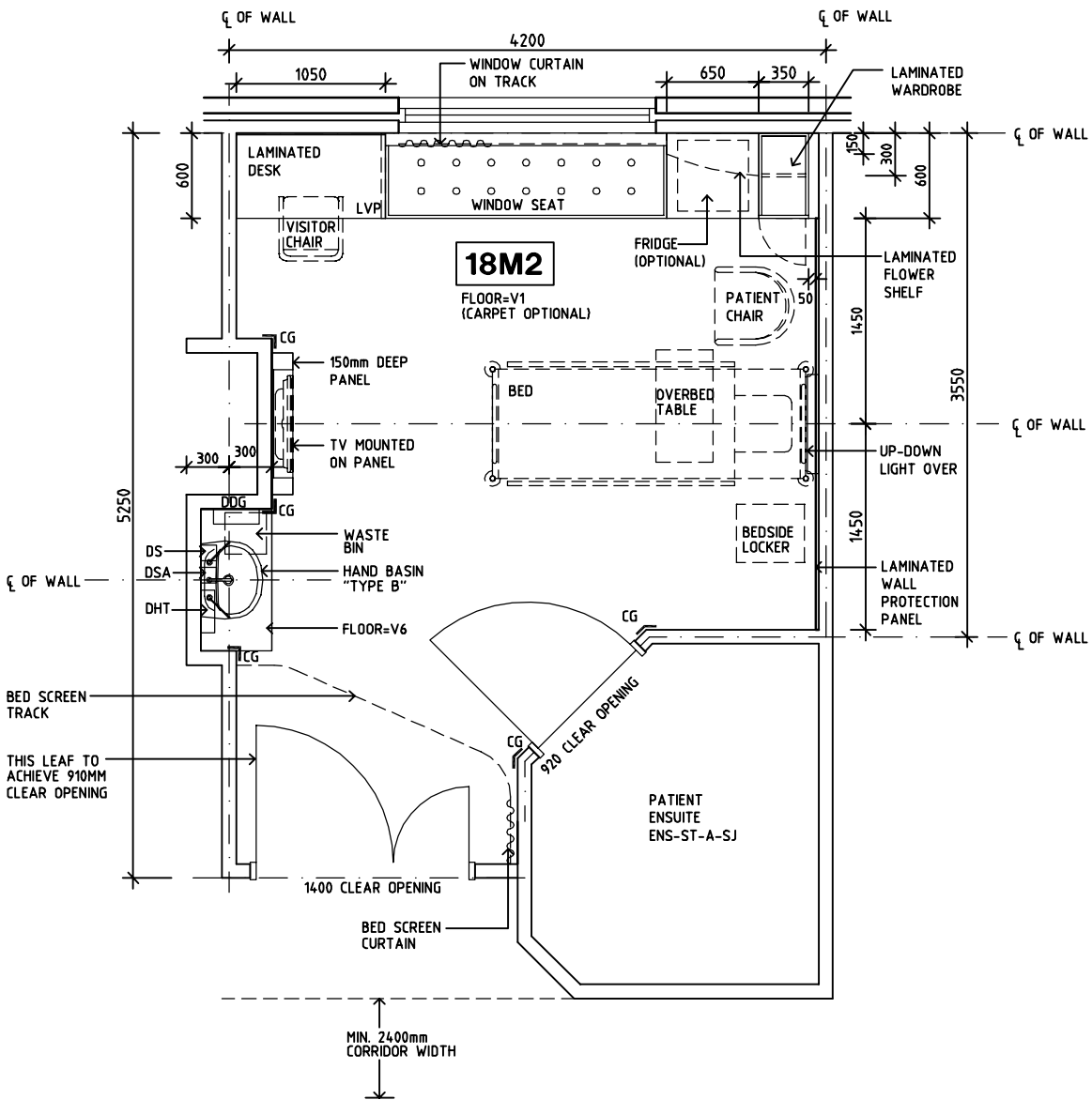


SHARJAH HEALTHCARE CITY STANDARD COMPONENTS

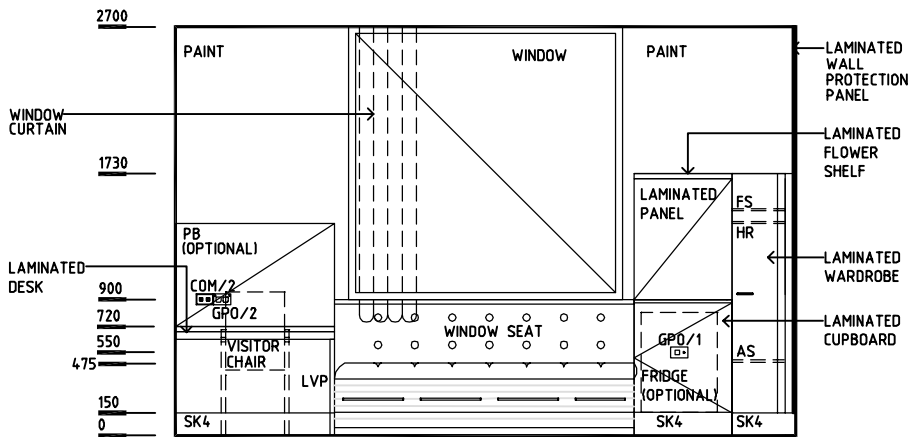
Room Layout Sheet

Room Name	1 Bed Room - Inboard Ensuite	RLS Room Code	1BR-ST-SJ-A1
		RDS Room Code	1BR-ST-SJ

AS	ADJUSTABLE SHELF
CG	CORNER GUARD
COM/2	COMMUNICATION OUTLET - DOUBLE
DDG	DISPENSER - DISPOSABLE GLOVES
DHT	DISPENSER - HAND TOWEL
DS	DISPENSER - SOAP
DSA	DISPENSER - SOAP ANTISEPTIC
DP	DOOR AND DOOR FRAME PROTECTION
EC	EMERGENCY CALL
FS	FIXED SHELF
GPO/1	GENERAL POWER OUTLET-SINGLE
GPO/1EP	EMERGENCY POWER OUTLET- SINGLE
GPO/C	GENERAL POWER OUTLET - CLEANER'S
HR	HANGING RAIL
LS/B	LIGHT SWITCH - BED
LS/E	LIGHT SWITCH - ENSUITE
LS/R	LIGHT SWITCH - ROOM
LS/UDL	LIGHT SWITCH - UP-DOWN LIGHT
LVP	LAMINATE VERTICAL SUPPORT PANEL
MA	MEDICAL AIR
MATV	MASTER ANTENNA TV
NA	NURSE ASSIST CALL
NC	PATIENT NURSE CALL
O2	OXYGEN
RCD	RESIDUAL CURRENT DEVICE
S	SUCTION
SBB	SUCTION BOTTLE BRACKET
SK4	FLOOR VINYL COVED SKIRTING
V1	VINYL FLOORING, STANDARD SLIP RESISTANT
V6	VINYL FLOORING, NON SLIP TEXTURED



PLAN



ELEVATION 1

REV	DESCRIPTION	DATE	BY	REV	DESCRIPTION	DATE	BY	REV	DESCRIPTION	DATE	BY
1	FIRST ISSUE	14.03.2014	AA								

	SHCC Guidelines	Sharjah Health Facility Guidelines at: www.healthdesign.com.au/shcc/hfg Editable version of Standard Components on Health Facility Briefing System (HFBS) at: www.healthdesign.com.au Provided by TAHPI				DESIGNED	APPROVED	DATE	SCALE(S)	SHEET
						CC/SYH	DB	30.12.13	1:50 in A3	1 of 2
						CAD FILE NAME 1BR-ST-SJ-A1		PAPER DRAWING ID 1BR-ST-SJ-A1a		ISSUE 1

SHARJAH HEALTHCARE CITY STANDARD COMPONENTS

Room Layout Sheet

Room Name	1 Bed Room - Inboard Ensuite	RLS Room Code	1BR-ST-SJ-A1
		RDS Room Code	1BR-ST-SJ

- AS

CG

COM/2

DDG

DHT

DS

DSA

DP

EC

FS

GPO/1

GPO/1EP

GPO/C

HR

LS/B

LS/E

LS/R

LS/UDL

LVP

MA

MATV

NA

NC

O2

RCD

S

SBB

SK4

V1

V6
- ADJUSTABLE SHELF

CORNER GUARD

COMMUNICATION OUTLET - DOUBLE

DISPENSER - DISPOSABLE GLOVES

DISPENSER - HAND TOWEL

DISPENSER - SOAP

DISPENSER - SOAP ANTISEPTIC

DOOR AND DOOR FRAME PROTECTION

EMERGENCY CALL

FIXED SHELF

GENERAL POWER OUTLET-SINGLE

EMERGENCY POWER OUTLET- SINGLE

GENERAL POWER OUTLET - CLEANER'S

HANGING RAIL

LIGHT SWITCH - BED

LIGHT SWITCH - ENSUITE

LIGHT SWITCH - ROOM

LIGHT SWITCH - UP-DOWN LIGHT

LAMINATE VERTICAL SUPPORT PANEL

MEDICAL AIR

MASTER ANTENNA TV

NURSE ASSIST CALL

PATIENT NURSE CALL

OXYGEN

RESIDUAL CURRENT DEVICE

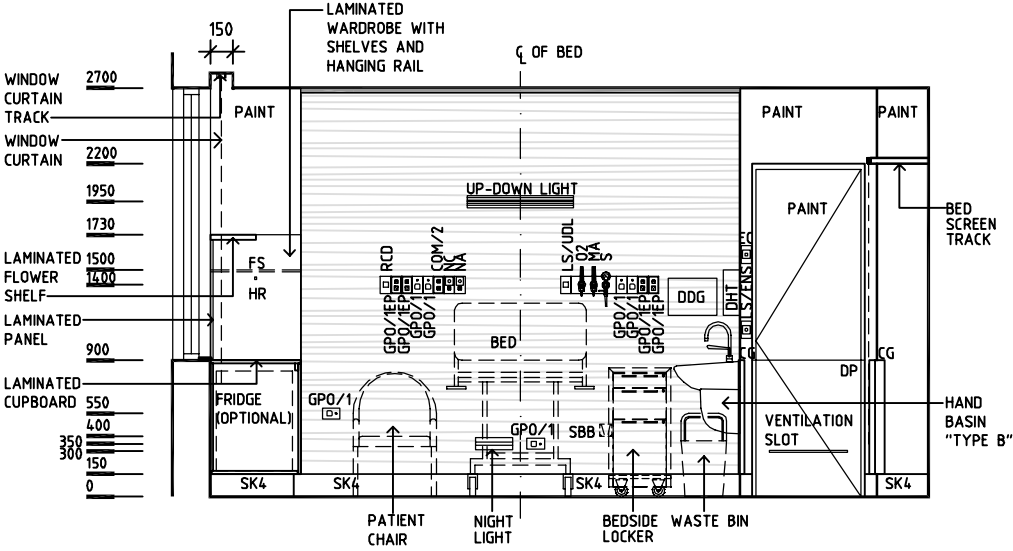
SUCTION

SUCTION BOTTLE BRACKET

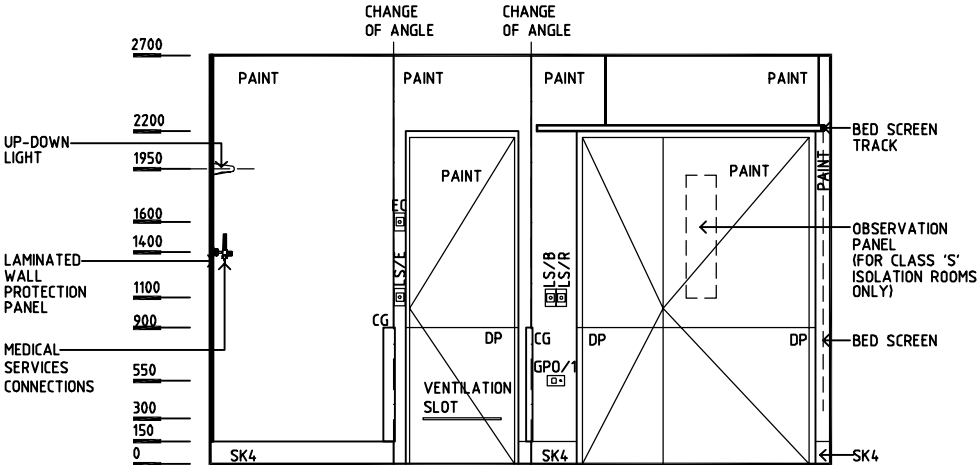
FLOOR VINYL COVED SKIRTING

VINYL FLOORING, STANDARD SLIP RESISTANT

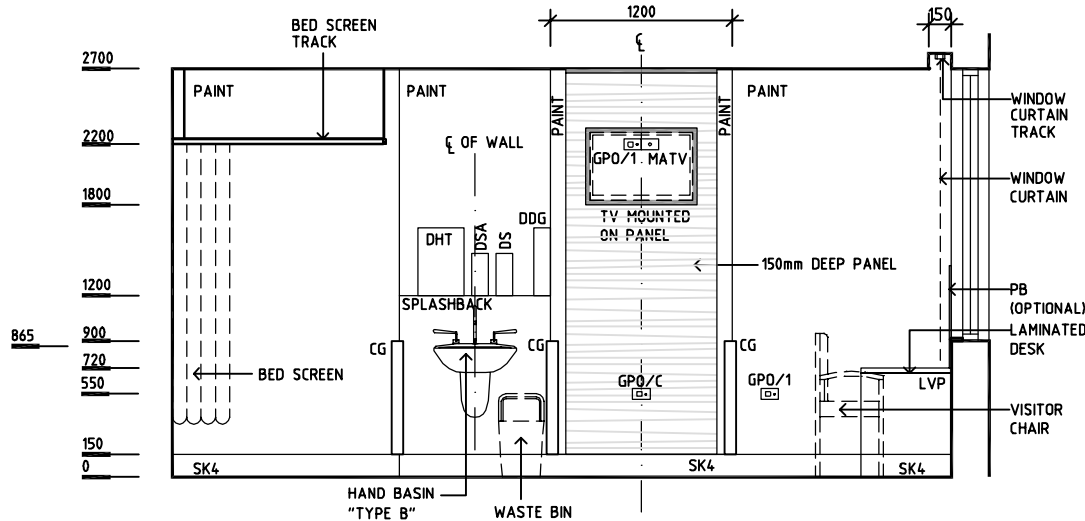
VINYL FLOORING, NON SLIP TEXTURED



ELEVATION 2



ELEVATION 3



ELEVATION 4

REV	DESCRIPTION	DATE	BY	REV	DESCRIPTION	DATE	BY	REV	DESCRIPTION	DATE	BY
1	FIRST ISSUE	14.03.2014	AA								

	Sharjah Health Facility Guidelines at: www.healthdesign.com.au/shccfg Editable version of Standard Components on Health Facility Briefing System (HFBS) at: www.healthdesign.com.au Provided by TAHPI	DESIGNED	APPROVED	DATE	SCALE(S)	SHEET
		CC/SYH	DB	30.12.13	1:50 in A3	2 of 2
		CAD FILE NAME 1BR-ST-SJ-A1		PAPER DRAWING ID 1BR-ST-SJ-A1b		ISSUE 1