

# NSW HFG STANDARD COMPONENTS

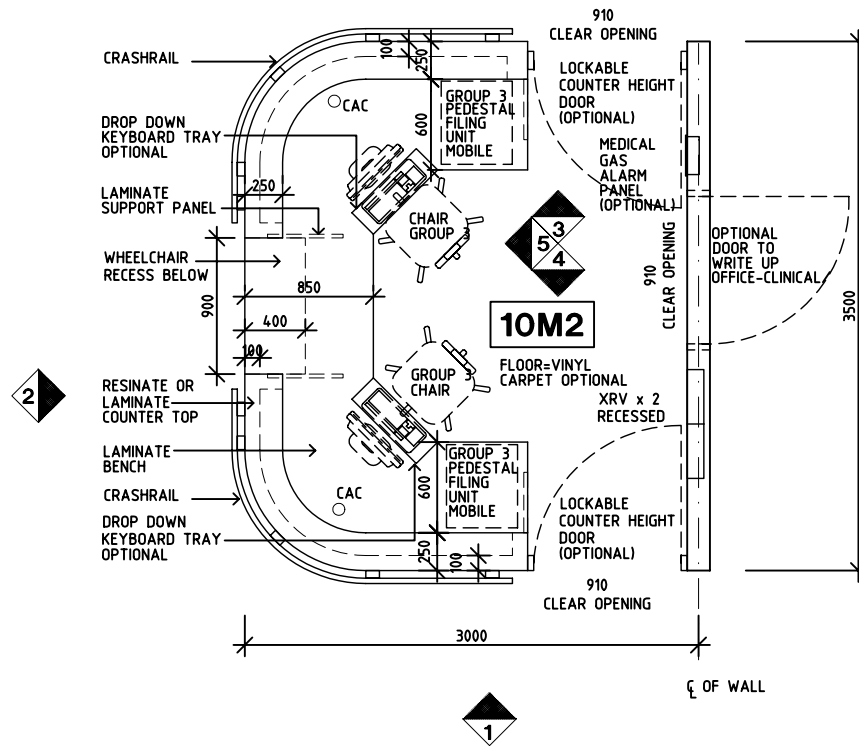
Room Layout Sheet

Room Name **Staff Station, 10m2**

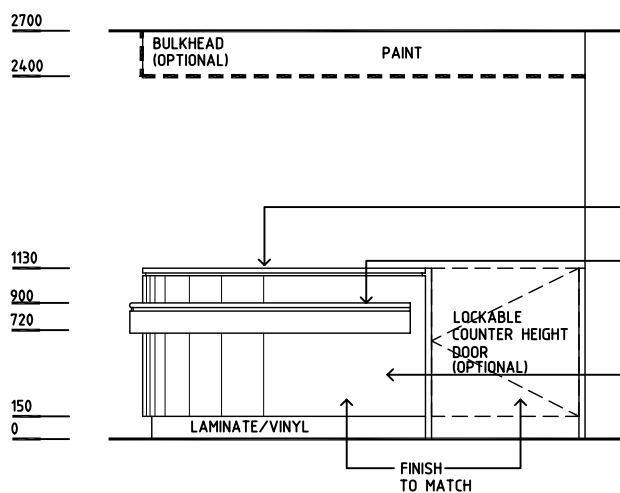
RLS Room Code **SSTN-10**

RDS Room Code **SSTN-10**

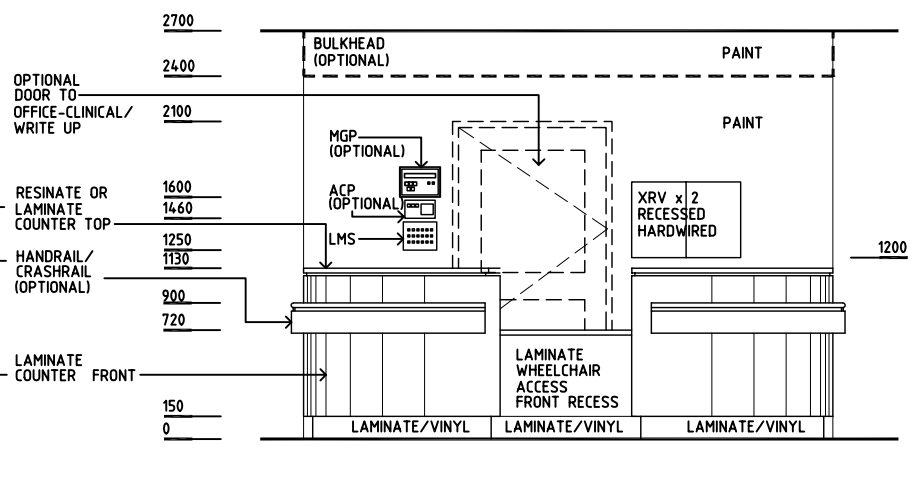
- ACP AIR CONDITIONING PANEL
- CAC CABLE ACCESS CAP
- COM/2 COMMUNICATION OUTLET, DOUBLE
- GPO/2 GENERAL PURPOSE OUTLET-DOUBLE
- LMS LIGHTS MULTIGANG SWITCHPLATE
- LS/P LIGHT SWITCH - PELMET TASK LIGHT
- MGP MEDICAL GAS PANEL
- PB PINBOARD
- SK4 FLOOR VINYL COVERED SKIRTING
- XRV X-RAY VIEWER



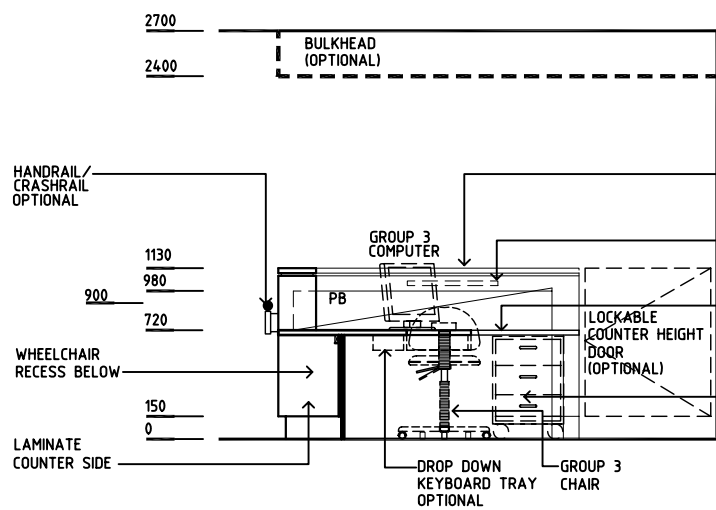
**PLAN**



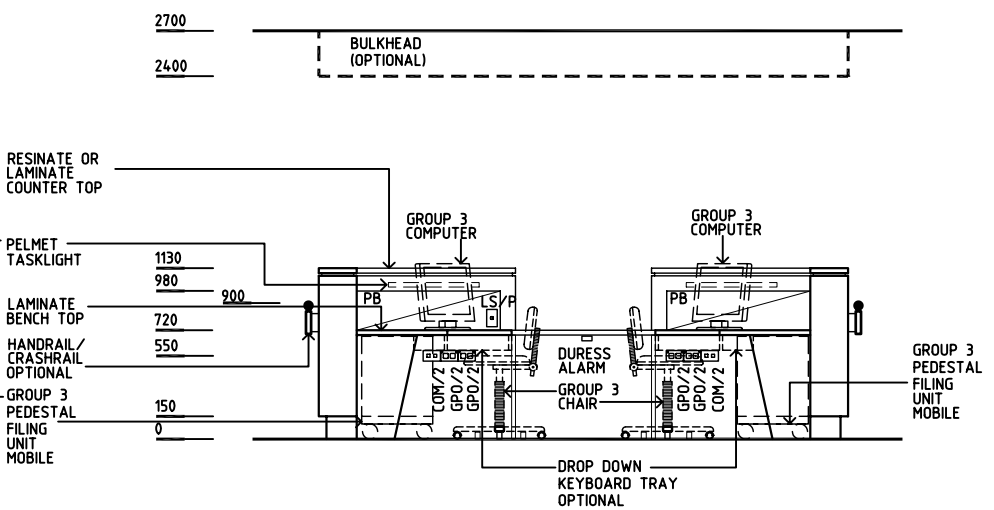
**ELEVATION 1**



**ELEVATION 2**



**ELEVATION 3  
ELEVATION 4 (similar)**



**ELEVATION 5**

REV	DESCRIPTION	DATE	BY	REV	DESCRIPTION	DATE	BY	REV	DESCRIPTION	DATE	BY
1	FIRST ISSUE	1.7.05	HS								