

# NSW HFG STANDARD COMPONENTS

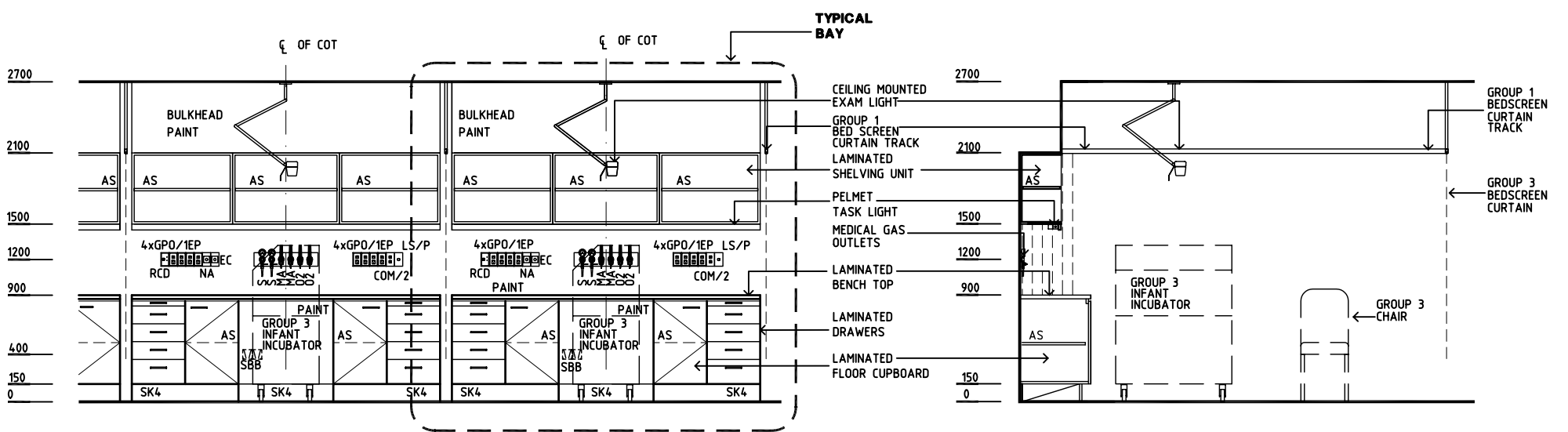
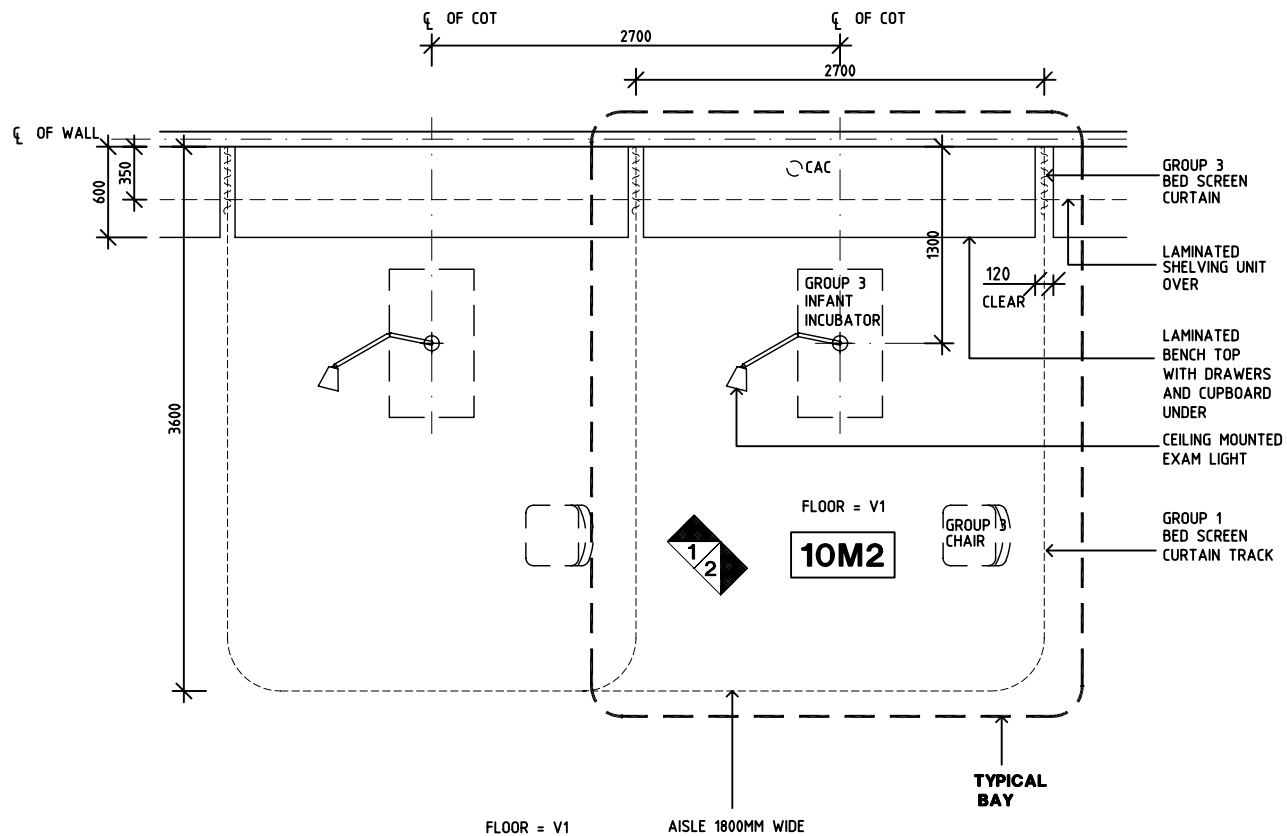
Room Layout Sheet

Room Name **Neonatal Bay - Special Care**

RLS Room Code **NBSC**

RDS Room Code **NBSC**

- AS ADJUSTABLE SHELF
- CAC CABLE ACCESS CAP
- COM/2 COMMUNICATION OUTLET - DOUBLE
- EC EMERGENCY CALL
- GPO/1EP EMERGENCY POWER - SINGLE
- LS/P LIGHT SWITCH - PELMET LIGHT
- MA MEDICAL AIR
- NA NURSE ASSIST CALL
- O2 OXYGEN
- S SUCTION
- SBB SUCTION BOTTLE BRACKET
- SK4 FLOOR VINYL COVERED SKIRTING
- V1 VINYL FLOORING STANDARD



REV	DESCRIPTION	DATE	BY	REV	DESCRIPTION	DATE	BY	REV	DESCRIPTION	DATE	BY
1	FIRST ISSUE	1.7.05	HS								