

NSW HFG STANDARD COMPONENTS

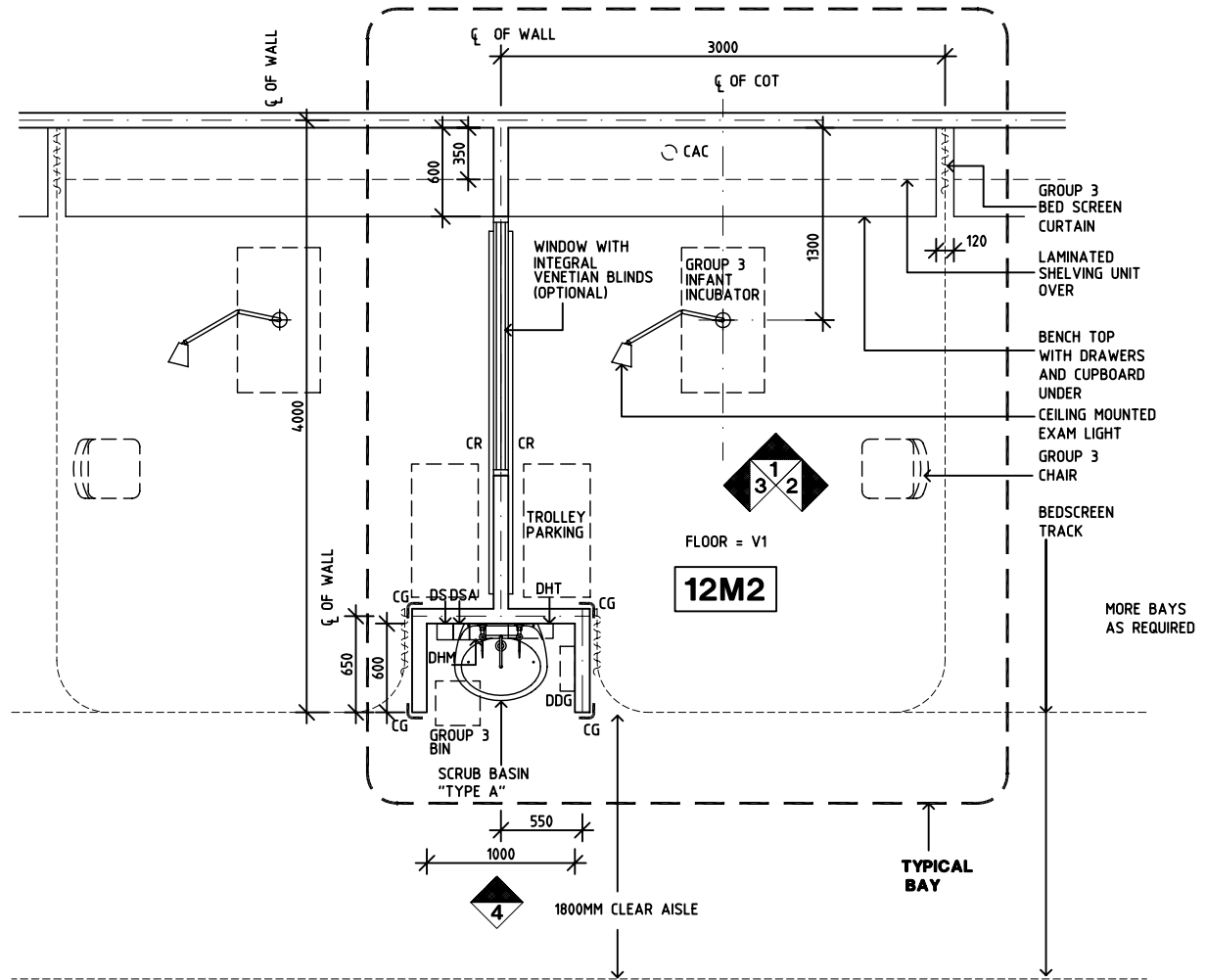
Room Layout Sheet

Room Name **Neonatal Bay - Intensive Care**

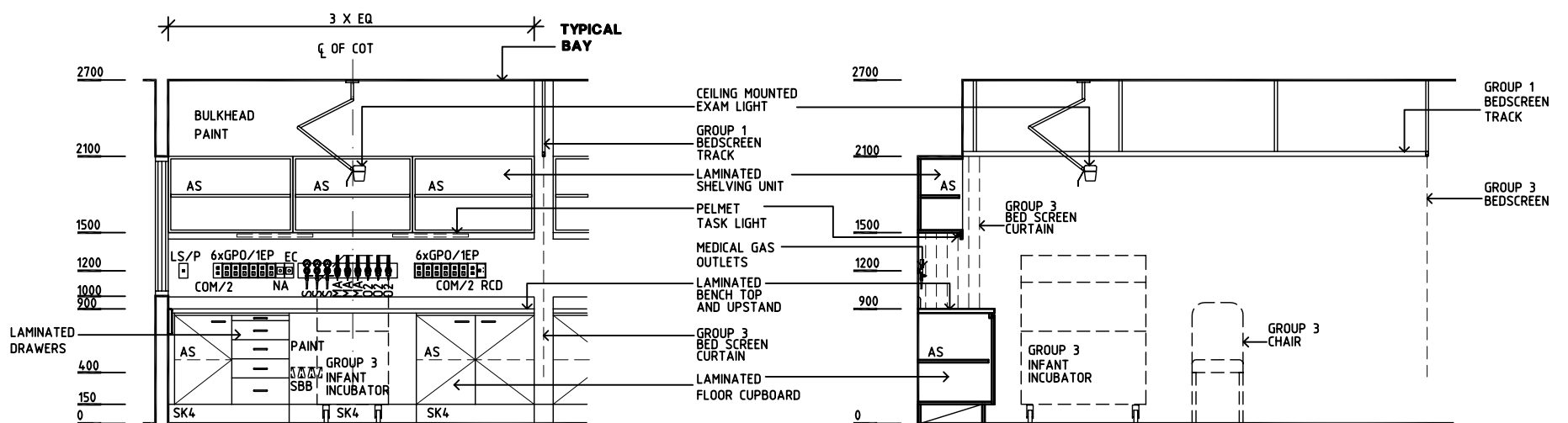
RLS Room Code **NBICU**

RDS Room Code **NBICU**

- AS ADJUSTABLE SHELF
- CG CORNER GUARD
- CAC CABLE ACCESS CAP
- CR CRASH RAIL
- COM/2 COMMUNICATION OUTLET - DOUBLE
- DS DISPENSER - SOAP
- DSA DISPENSER - SOAP ANTISEPTIC
- DDG DISPENSER - DISPOSABLE GLOVES
- DHT DISPENSER - HAND TOWEL
- EC EMERGENCY CALL
- GPO/1EP EMERGENCY POWER - SINGLE
- GPO/C GENERAL POWER OUTLET - CLEANER'S
- LS/P LIGHT SWITCH - PELMET
- MA MEDICAL AIR
- NA NURSE ASSIST CALL
- O2 OXYGEN
- S SUCTION
- SBB SUCTION BOTTLE BRACKET
- SK4 FLOOR VINYL COVERED SKIRTING
- V1 VINYL FLOORING STANDARD

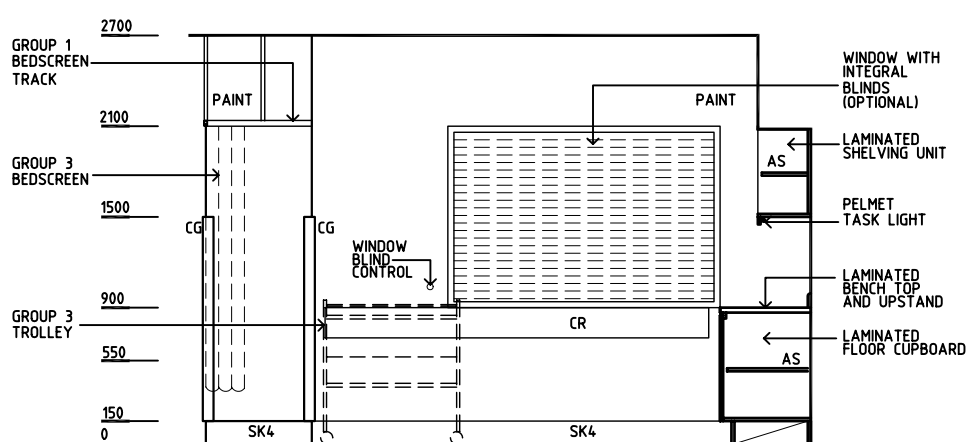


PLAN

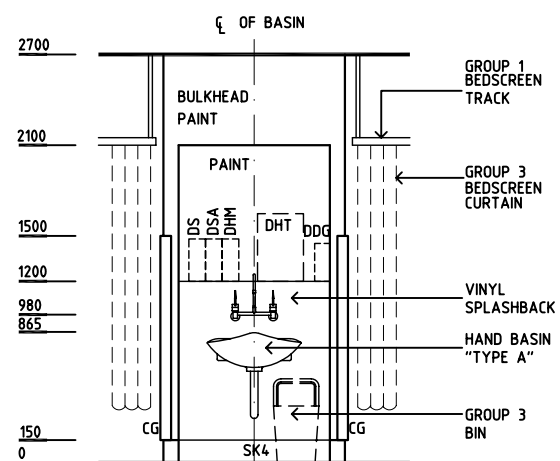


ELEVATION 1

ELEVATION 2



ELEVATION 3



ELEVATION 4

REV	DESCRIPTION	DATE	BY	REV	DESCRIPTION	DATE	BY	REV	DESCRIPTION	DATE	BY
1	FIRST ISSUE	17.05	HS								