

NSW HFG STANDARD COMPONENTS

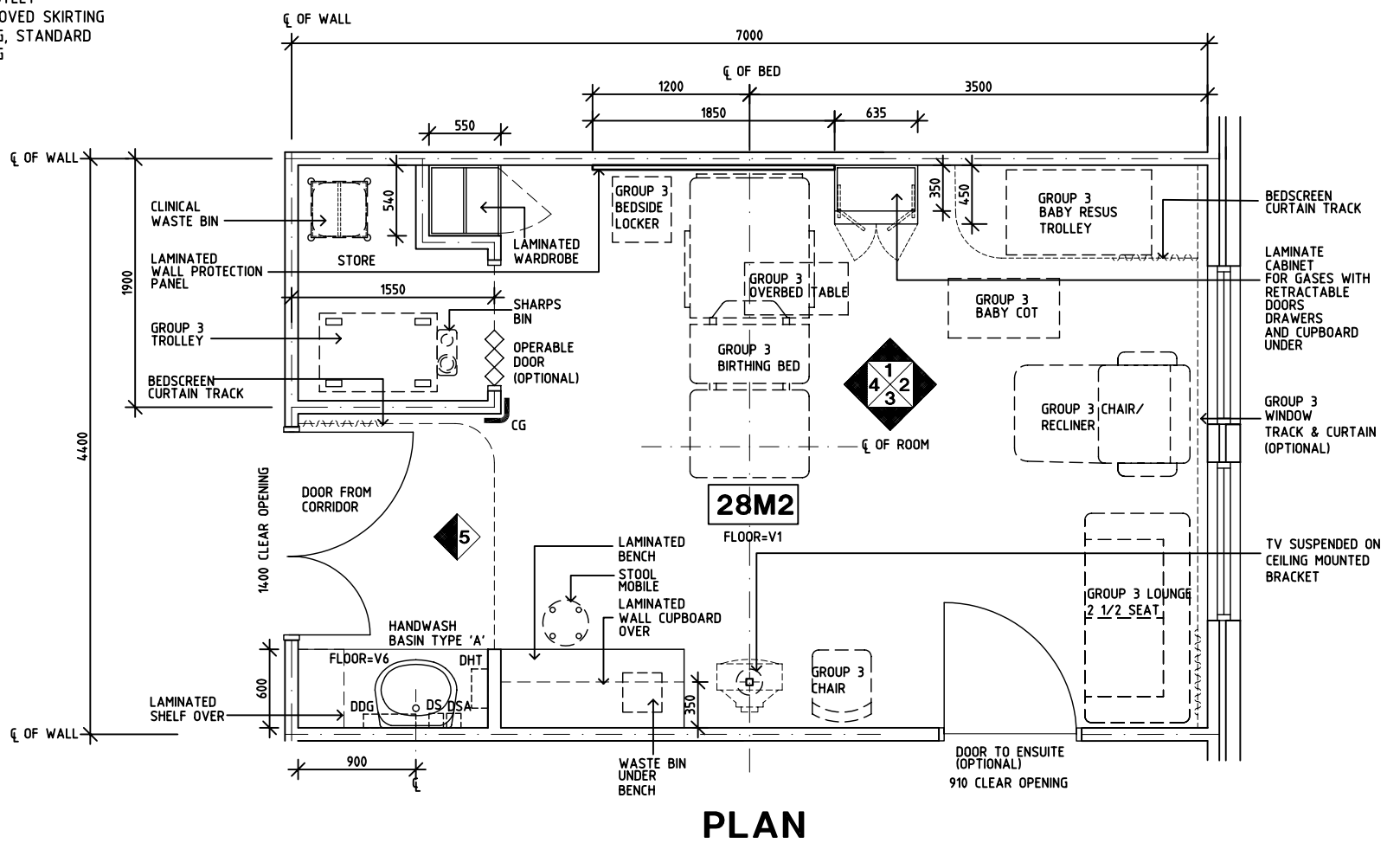
Room Layout Sheet

Room Name **Birthing Room - LDR**

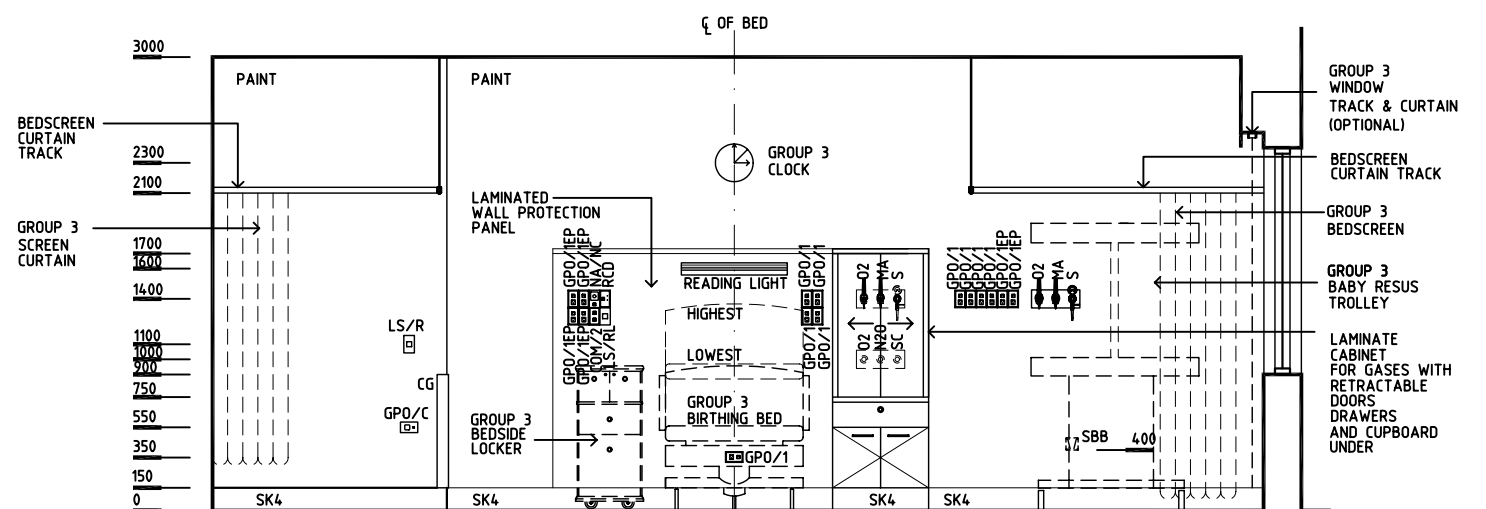
RLS Room Code **BIRM**

RDS Room Code **BIRM**

- AS ADJUSTABLE SHELF
- CG CORNER GUARD
- COM/2 COMMUNICATION OUTLET - DOUBLE
- DDG DISPENSER - DISPOSABLE GLOVES
- DHT DISPENSER - HAND TOWEL
- DS DISPENSER - SOAP
- DSA DISPENSER - SOAP ANTISEPTIC
- DP DOOR AND DOOR FRAME PROTECTION
- EC EMERGENCY CALL
- EC EMERGENCY CALL
- FS FIXED SHELF
- GPO/1 GENERAL PURPOSE OUTLET- SINGLE
- GPO/2 GENERAL PURPOSE OUTLET- DOUBLE
- GPO/1EP EMERGENCY POWER - SINGLE
- GPO/C GENERAL PURPOSE OUTLET- CLEANER'S
- LS/ENS LIGHT SWITCH - ENSUITE
- LS/R LIGHT SWITCH - ROOM
- LS/RL LIGHT SWITCH - READING LIGHT
- MA MEDICAL AIR
- NA NURSE CALL ASSIST
- NC PATIENT/ NURSE CALL
- N2O NITROUS OXIDE
- O2 OXYGEN
- RCD RESIDUAL CURRENT DEVICE
- S SUCTION
- SC SCAVENGING OUTLET
- SK4 FLOOR VINYL COVERED SKIRTING
- V1 VINYL FLOORING, STANDARD
- V6 VINYL FLOORING



PLAN



ELEVATION 1

REV	DESCRIPTION	DATE	BY	REV	DESCRIPTION	DATE	BY	REV	DESCRIPTION	DATE	BY
1	FIRST ISSUE	14.7.05	BJ								

NSW HFG STANDARD COMPONENTS

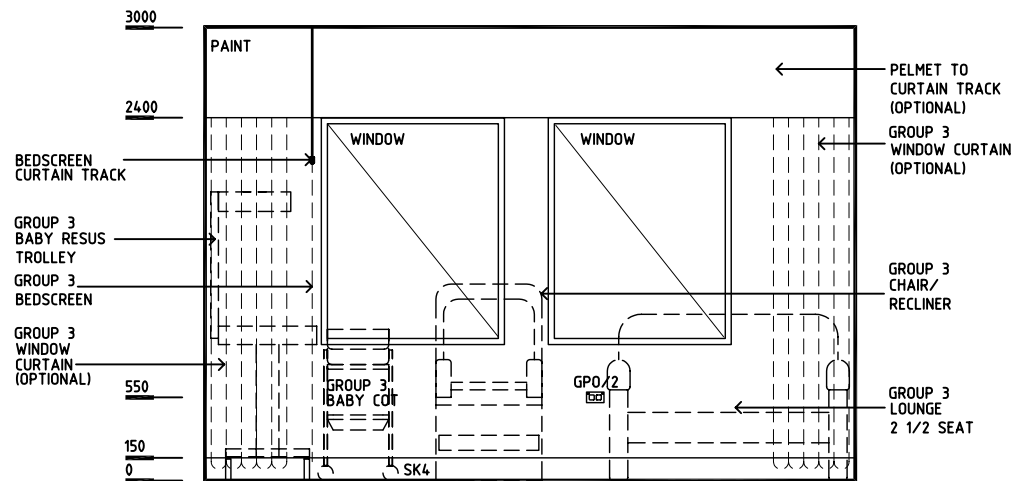
Room Layout Sheet

Room Name **Birth Room - LDR**

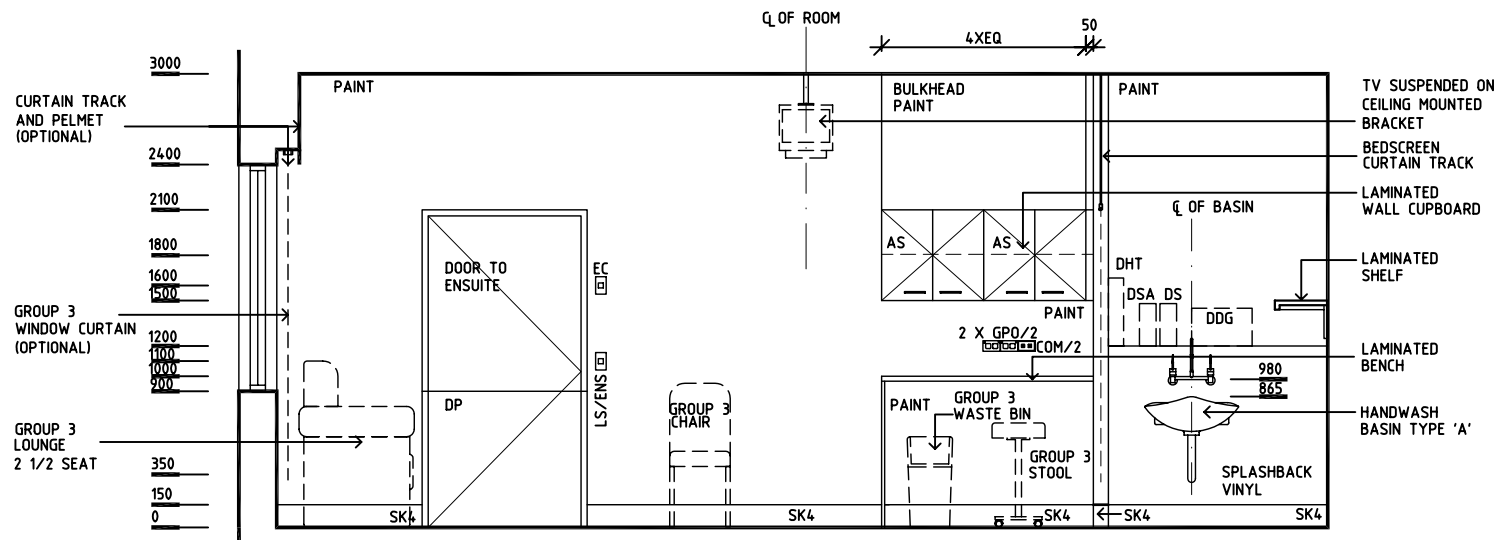
RLS Room Code **BIRM**

RDS Room Code **BIRM**

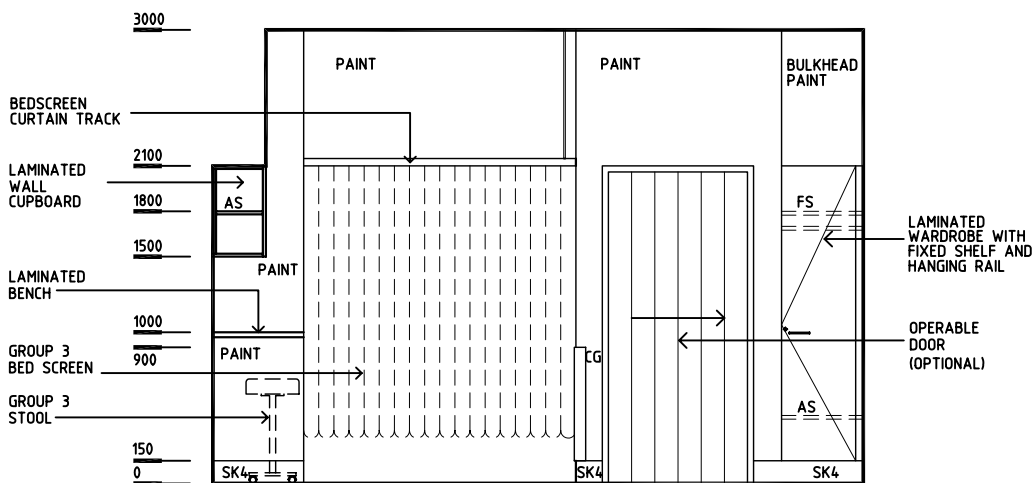
- AS ADJUSTABLE SHELF
- CG CORNER GUARD
- COM/2 COMMUNICATION OUTLET - DOUBLE
- DDG DISPENSER - DISPOSABLE GLOVES
- DHT DISPENSER - HAND TOWEL
- DS DISPENSER - SOAP
- DSA DISPENSER - SOAP ANTISEPTIC
- DP DOOR AND DOOR FRAME PROTECTION
- EC EMERGENCY CALL
- FS FIXED SHELF
- GPO/1 GENERAL PURPOSE OUTLET - SINGLE
- GPO/2 GENERAL PURPOSE OUTLET - DOUBLE
- GPO/1EP EMERGENCY POWER - SINGLE
- GPO/C GENERAL PURPOSE OUTLET - CLEANER'S
- LS/ENS LIGHT SWITCH - ENSUITE
- LS/R LIGHT SWITCH - ROOM
- LS/RL LIGHT SWITCH - READING LIGHT
- MA MEDICAL AIR
- NA NURSE CALL ASSIST
- NC PATIENT/ NURSE CALL
- N2O NITROUS OXIDE
- O2 OXYGEN
- RCD RESIDUAL CURRENT DEVICE
- S SUCTION
- SC SCAVENGING OUTLET
- SK4 FLOOR VINYL COVERED SKIRTING
- V1 VINYL FLOORING, STANDARD
- V6 VINYL FLOORING



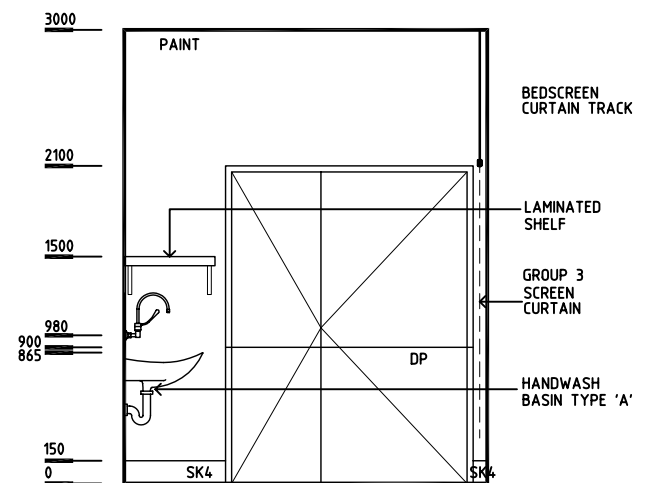
ELEVATION 2



ELEVATION 3



ELEVATION 4



ELEVATION 5

REV	DESCRIPTION	DATE	BY	REV	DESCRIPTION	DATE	BY	REV	DESCRIPTION	DATE	BY
1	FIRST ISSUE	14.7.05	BJ								