

NSW HFG STANDARD COMPONENTS

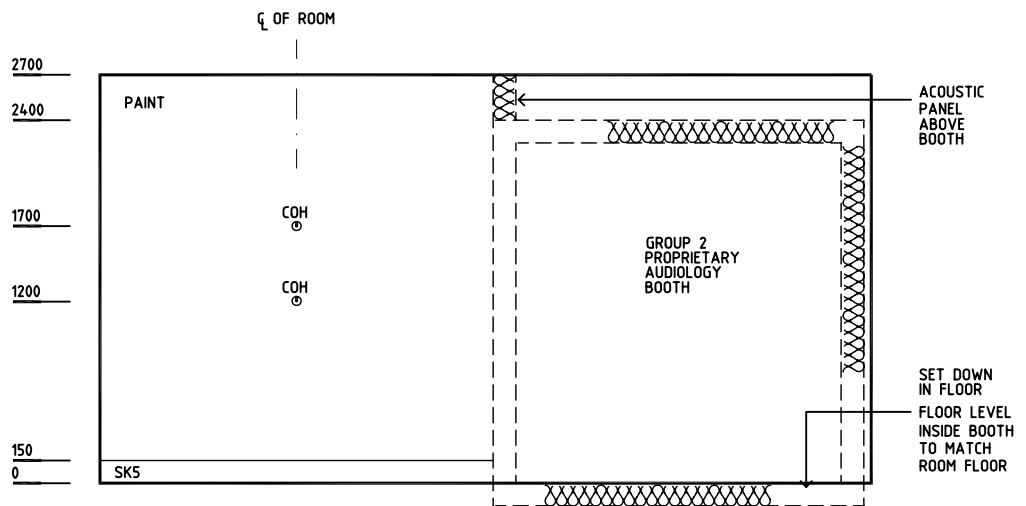
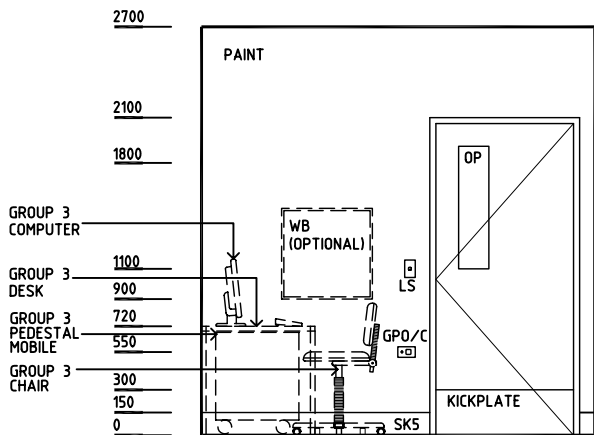
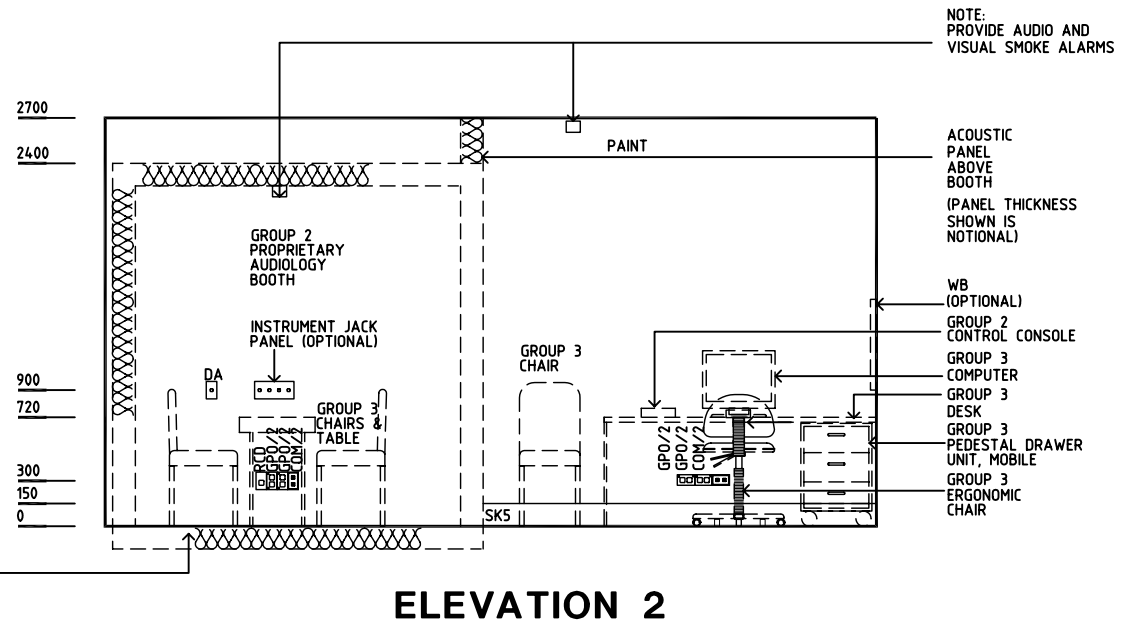
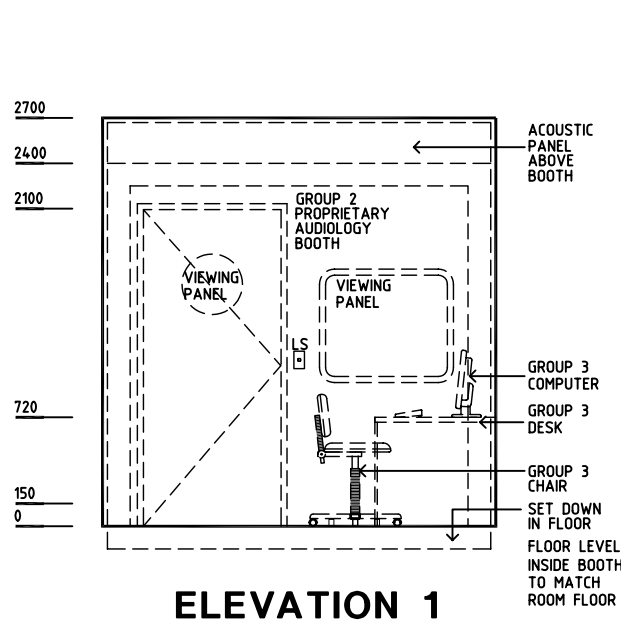
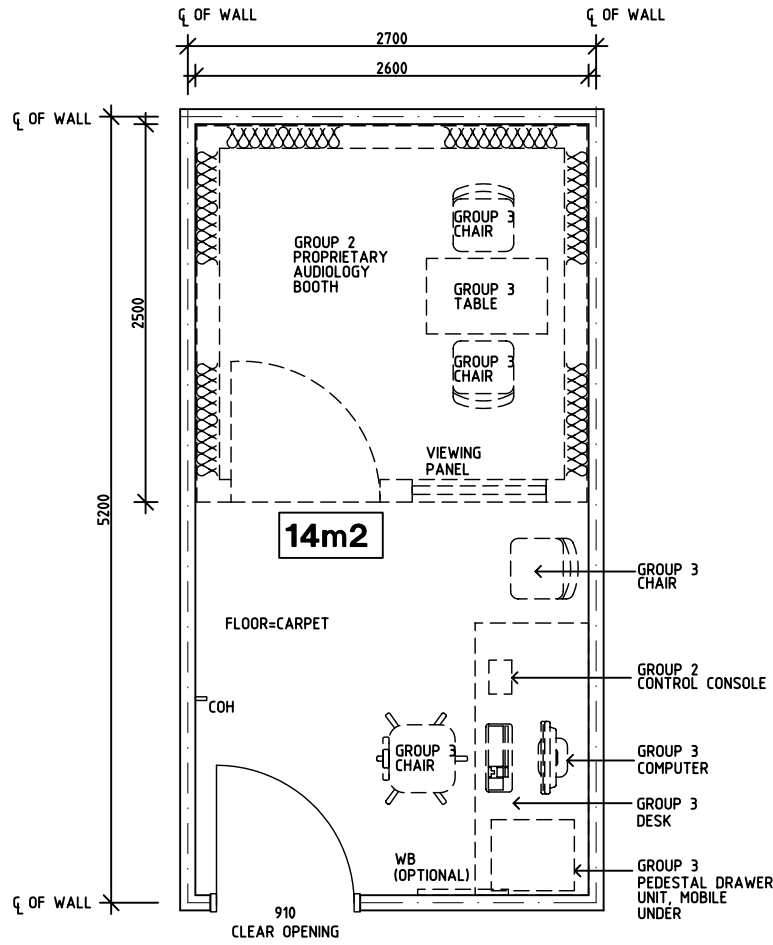
Room Layout Sheet

Room Name **Audiology Testing Room**

RLS Room Code **AUDIO**

RDS Room Code **AUDIO**

- COH COAT HOOK
- COM/2 COMMUNICATION OUTLET-DOUBLE
- DA DURESS ALARM
- GPO/1 GENERAL PURPOSE OUTLET - SINGLE
- GPO/2 GENERAL PURPOSE OUTLET - DOUBLE
- GPO/C GENERAL PURPOSE OUTLET - CLEANER'S
- LS LIGHT SWITCH
- OP OBSERVATION PANEL
- RCD RESIDUAL CURRENT DEVICE
- SK5 VINYL FEATHER EDGE SKIRTING
- WB WHITEBOARD



REV	DESCRIPTION	DATE	BY	REV	DESCRIPTION	DATE	BY	REV	DESCRIPTION	DATE	BY
1	FIRST ISSUE	13.7.05	BJ								