

NSW HFG STANDARD COMPONENTS

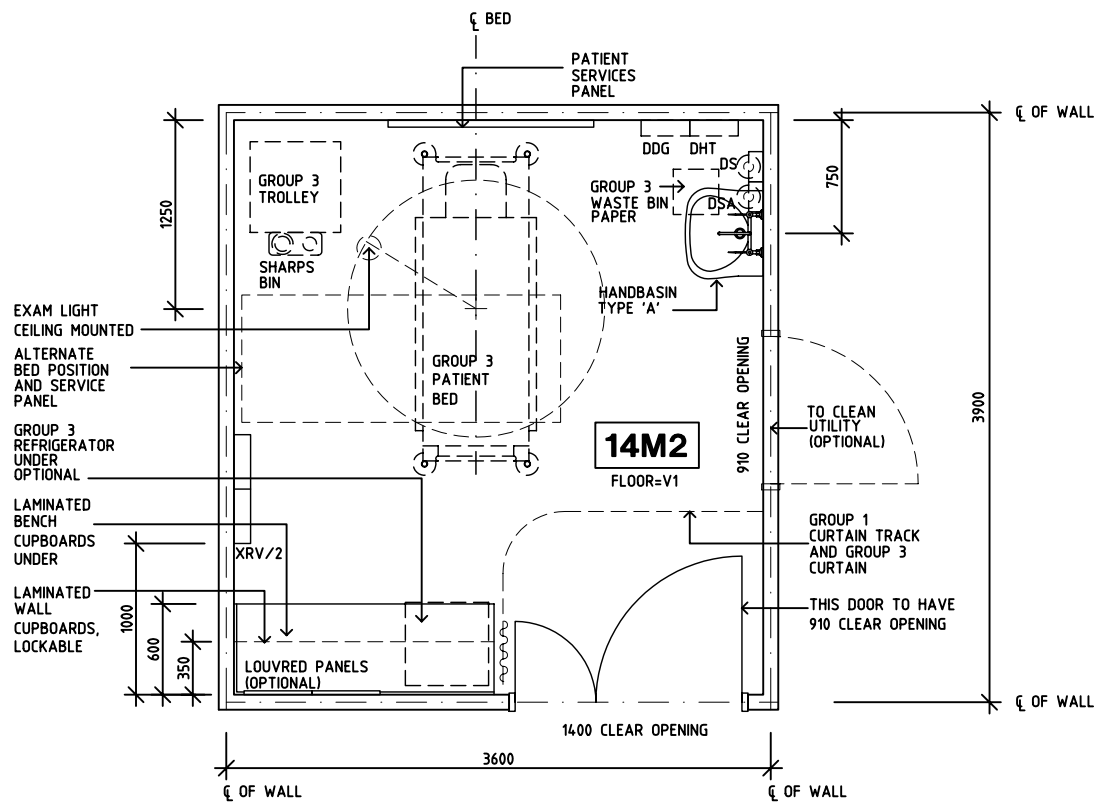
Room Layout Sheet

Room Name **Treatment Room**

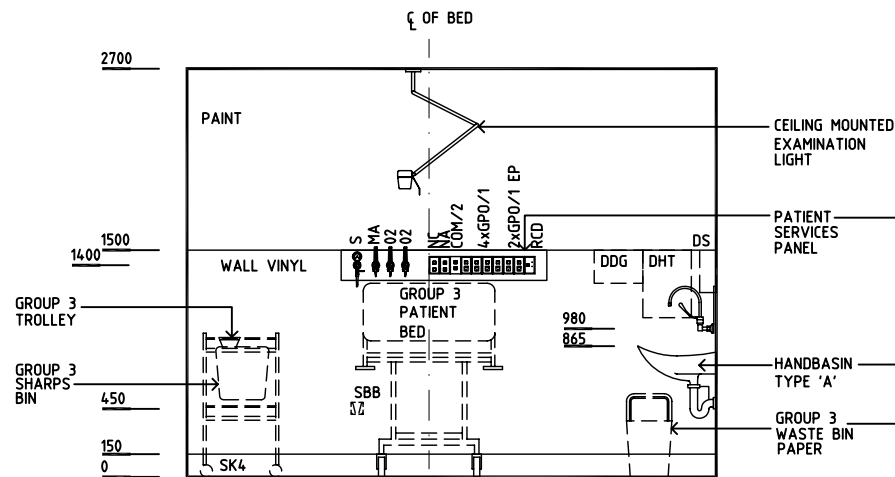
RLS Room Code **TRMT**

RDS Room Code **TRMT**

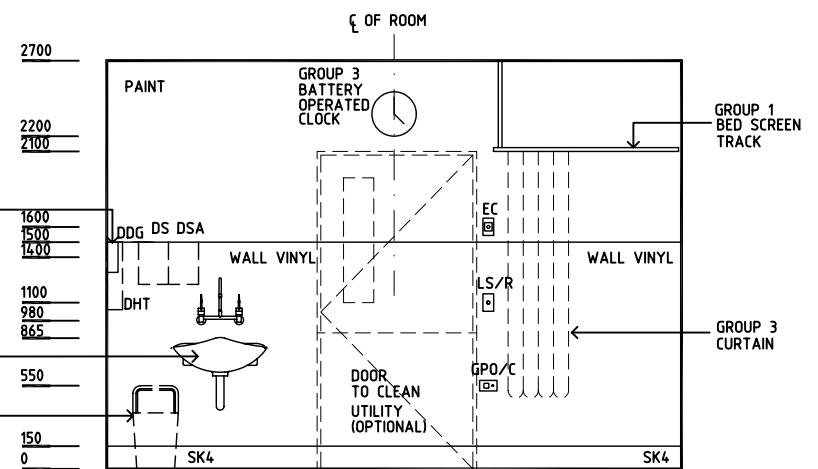
- AS ADJUSTABLE SHELF
- COM/2 COMMUNICATIONS OUTLET, DOUBLE
- DDG DISPENSER - DISPOSABLE GLOVE
- DHT DISPENSER - HAND TOWEL
- DS DISPENSER - SOAP
- DSA DISPENSER - SOAP ANTISEPTIC
- DP DOOR AND DOOR FRAME PROTECTION
- EC EMERGENCY CALL
- GPO/1 GENERAL PURPOSE OUTLET - SINGLE
- GPO/2 GENERAL PURPOSE OUTLET - DOUBLE
- GPO/1 EP GENERAL PURPOSE OUTLET - EMERGENCY POWER
- GPO/C GENERAL PURPOSE OUTLET - CLEANER'S
- LS/R LIGHT SWITCH-ROOM
- LS/P LIGHT SWITCH-PELMET TASK LIGHT
- MA MEDICAL AIR
- NA NURSE ASSIST CALL
- NC PATIENT/ NURSE CALL
- O2 OXYGEN
- OP OBSERVATION PANEL
- RCD RESIDUAL CURRENT DEVICE
- S SUCTION
- SBB SUCTION BOTTLE BRACKET
- SK4 FLOOR VINYL COVERED SKIRTING
- V1 VINYL FLOORING, STANDARD
- XRV/2 X-RAY VIEWER, 2 SCREEN



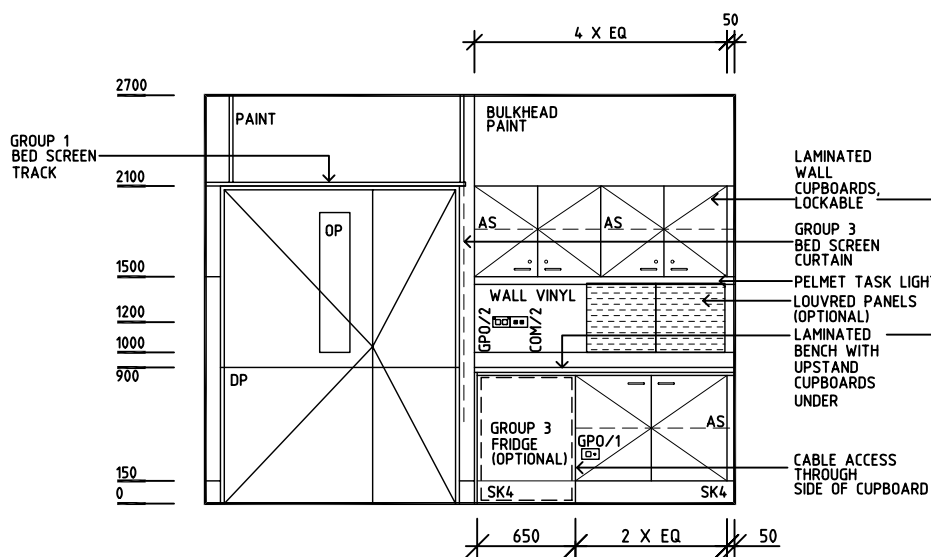
PLAN



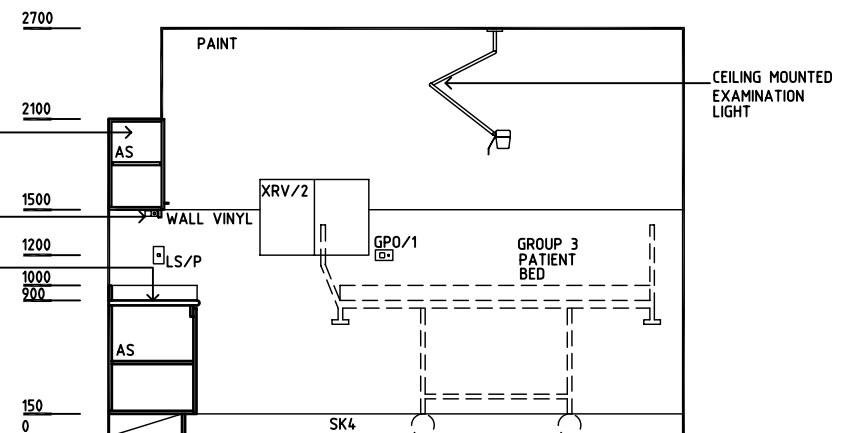
ELEVATION 1



ELEVATION 2



ELEVATION 3



ELEVATION 4

REV	DESCRIPTION	DATE	BY	REV	DESCRIPTION	DATE	BY	REV	DESCRIPTION	DATE	BY
1	FIRST ISSUE	8.12.03	AA								
2	GENERAL REVISIONS	6.6.05	AL								