

NSW HFG STANDARD COMPONENTS

Room Layout Sheet

Room Name | **Store - Sterile Stock, 24m2**

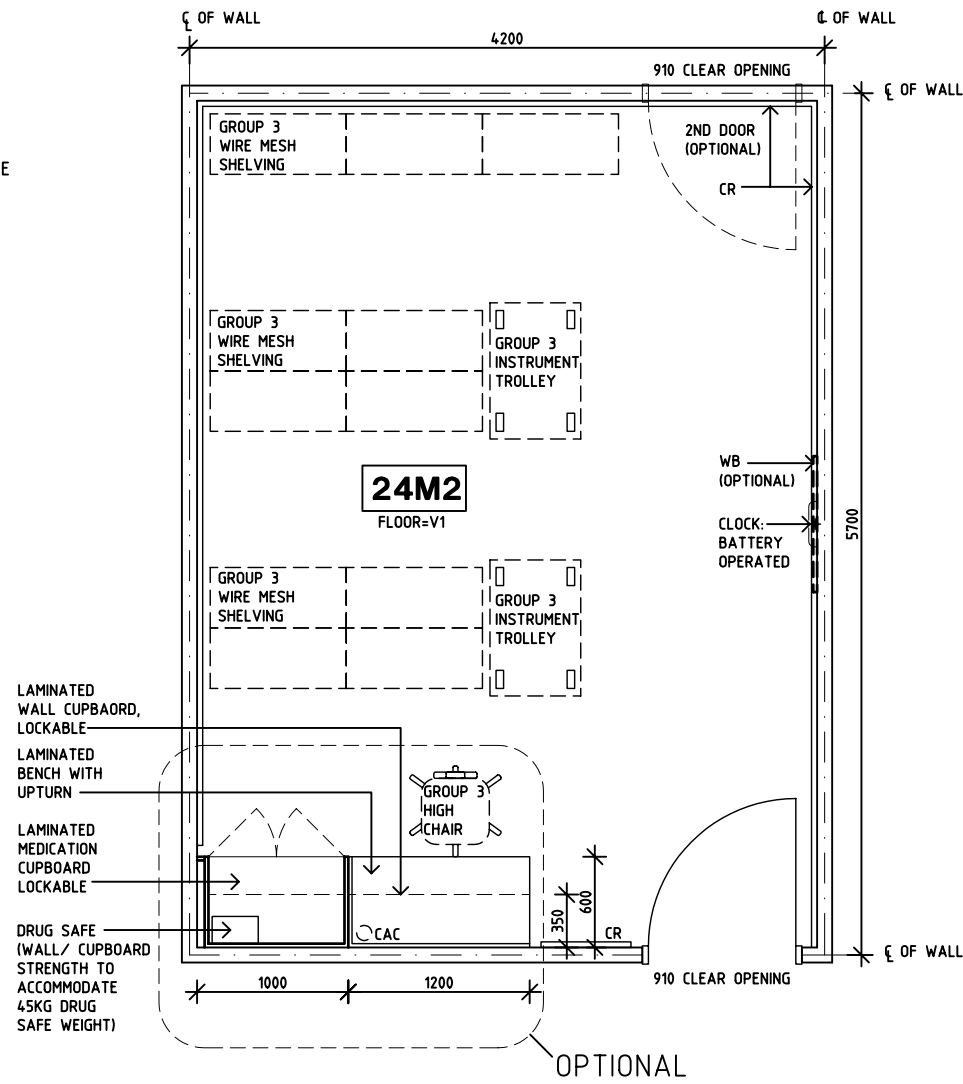
RLS Room Code **STSS-24**

RDS Room Code **STSS-24**

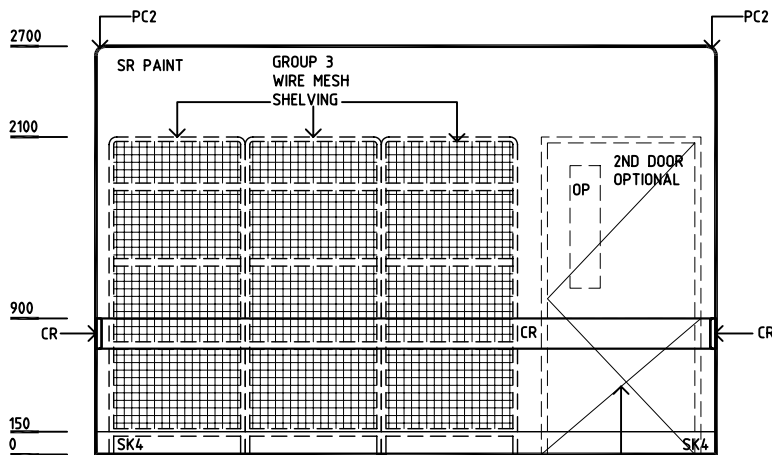
- AS ADJUSTABLE SHELF
- CAC CABLE ACCESS CAP
- COM/2 COMMUNICATIONS OUTLET - DOUBLE
- CR CRASH RAIL
- DP DOOR & DOOR FRAME PROTECTION
- FS FIXED SHELF
- GP0/2 GENERAL PURPOSE OUTLET - DOUBLE
- LS LIGHT SWITCH
- LS/P LIGHT SWITCH - PELMET
- LVP LAMINATED VERTICAL PANEL
- OP OBSERVATION PANEL
- PC2 60MM FLUSH SET COVERED CORNICE
- SK4 FLOOR VINYL COVERED SKIRTING
- SR SCRUB RESISTANT
- V1 FLOOR VINYL, STANDARD
- WB WHITEBOARD



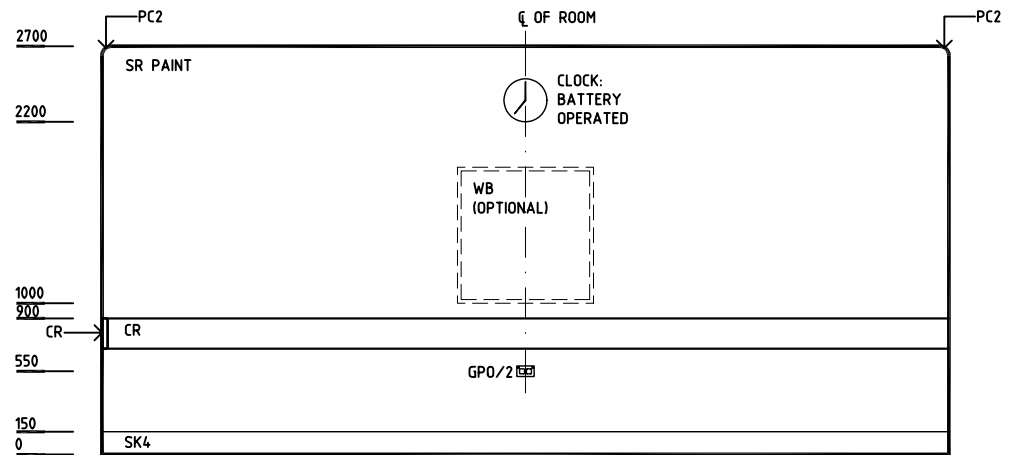
PLAN



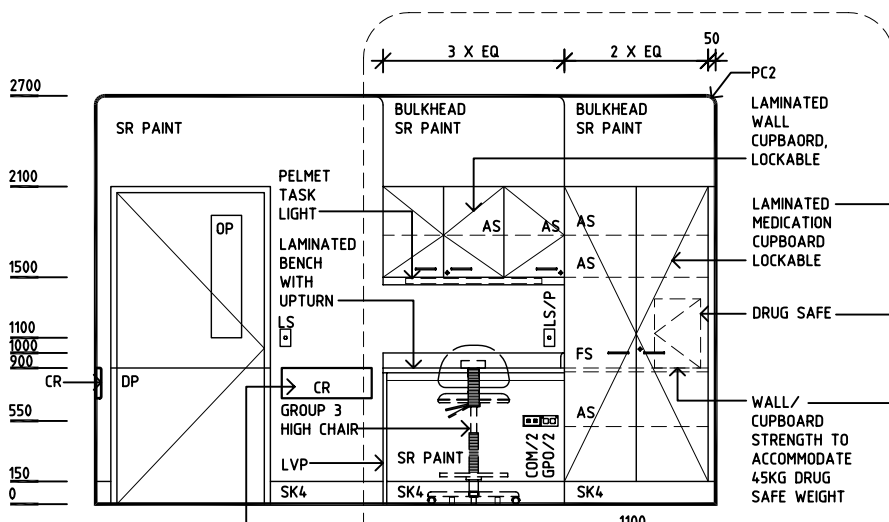
OPTIONAL



ELEVATION 1

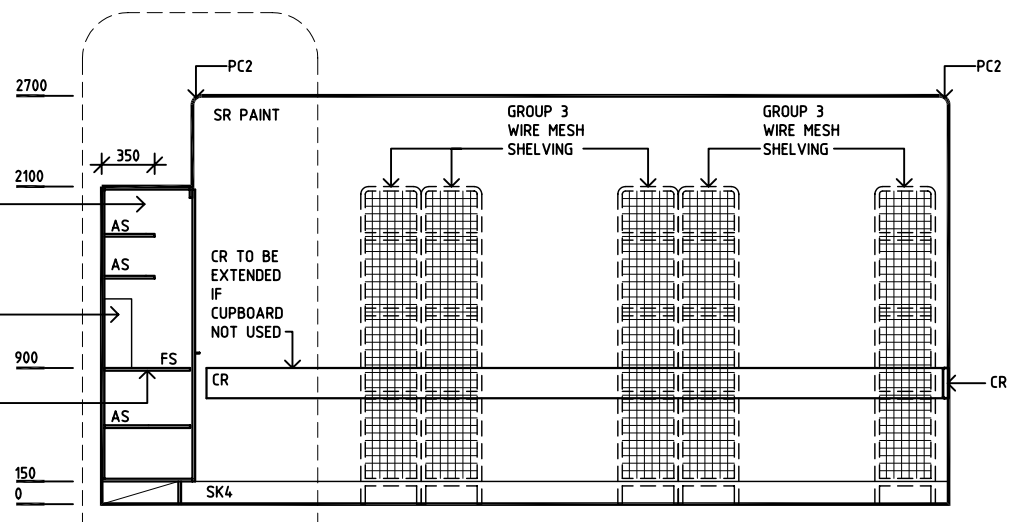


ELEVATION 2



ELEVATION 3

OPTIONAL
(NOT APPLICABLE TO SERVICES OUTLETS)



ELEVATION 4

REV	DESCRIPTION	DATE	BY	REV	DESCRIPTION	DATE	BY	REV	DESCRIPTION	DATE	BY
1	FIRST ISSUE	30.5.05	HS								