

NSW HFG STANDARD COMPONENTS

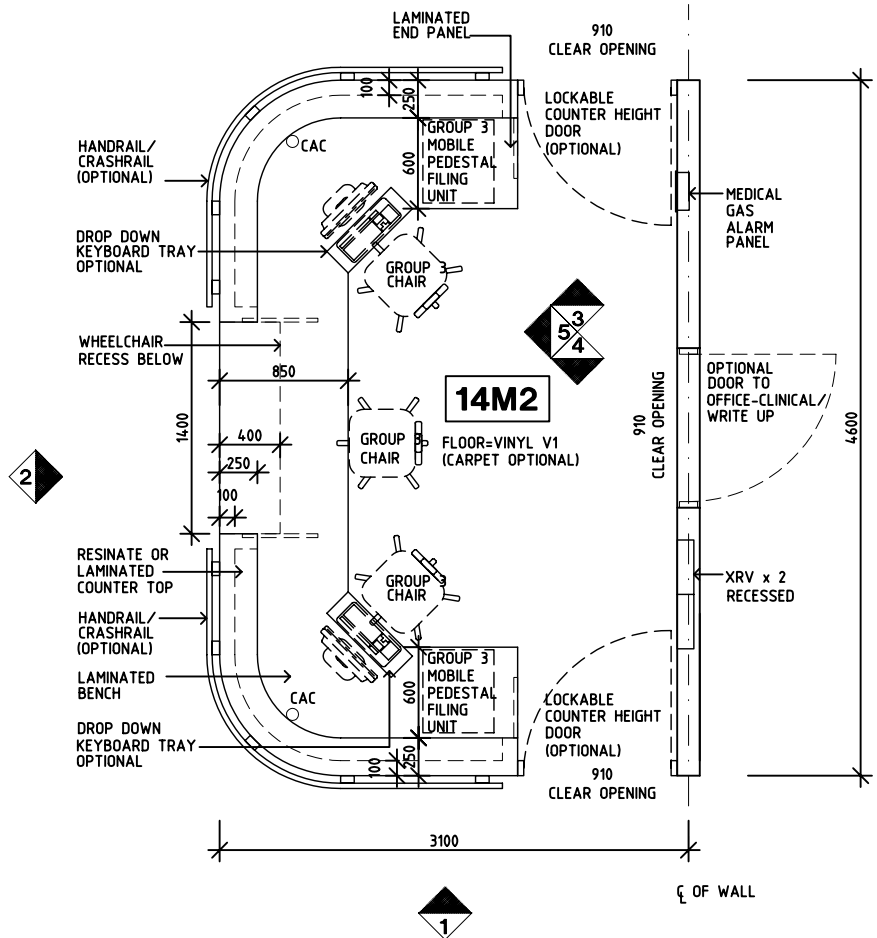
Room Layout Sheet

Room Name **Staff Station, 14m²**

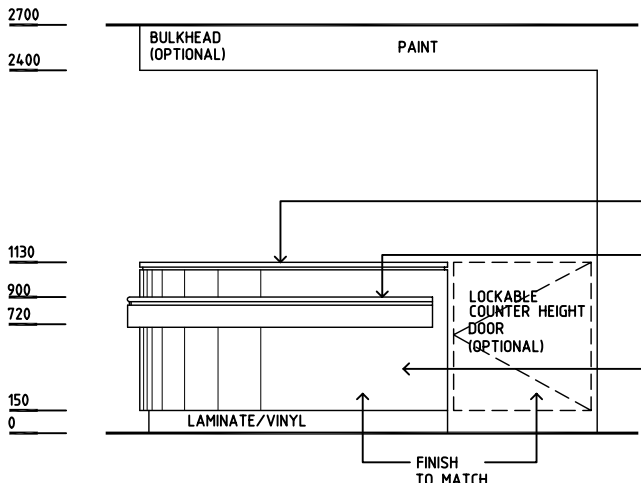
RLS Room Code **SSTN-14**

RDS Room Code **SSTN-14**

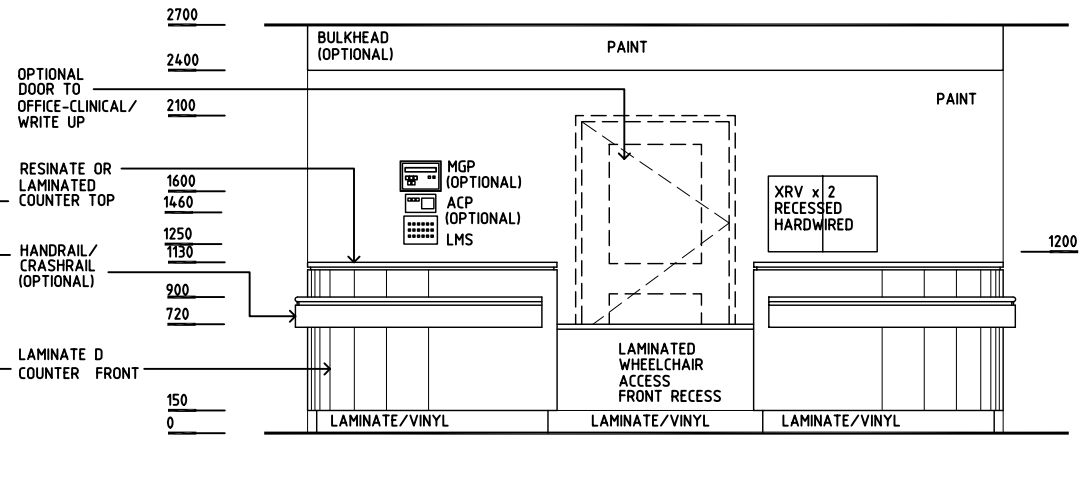
- ACP AIR CONDITIONING PANEL
- CAC CABLE ACCESS CAP
- COM/2 COMMUNICATION OUTLET, DOUBLE
- CR HANDRAIL/ CRASHRAIL (OPTIONAL)
- GP0/2 GENERAL PURPOSE OUTLET-DOUBLE
- LMS LIGHTS MULTIGANG SWITCHPLATE
- LS/P LIGHT SWITCH - PELMET TASK LIGHT
- LVP LAMINATED VERTICAL SUPPORT PANEL
- MGP MEDICAL GAS ALARM PANEL
- PB PINBOARD
- V1 FLOOR VINYL, STANDARD
- XRV X-RAY VIEWER



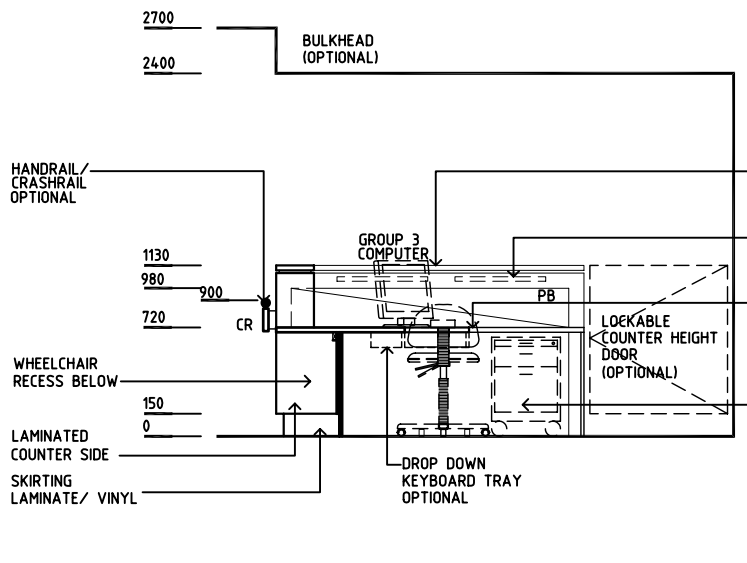
PLAN



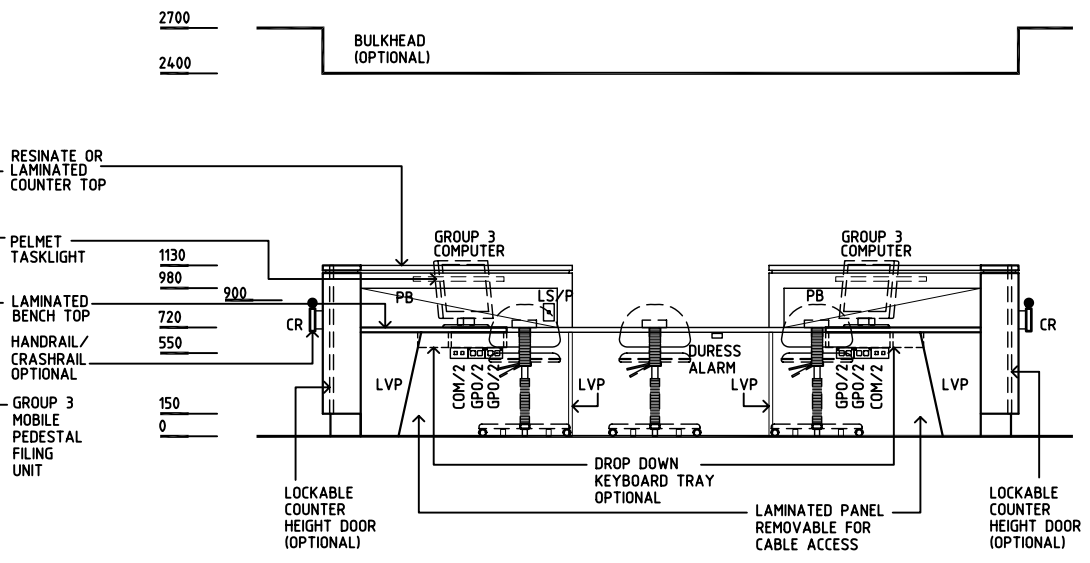
ELEVATION 1



ELEVATION 2



**ELEVATION 3
ELEVATION 4 (similar)**



ELEVATION 4

REV	DESCRIPTION	DATE	BY	REV	DESCRIPTION	DATE	BY	REV	DESCRIPTION	DATE	BY
1	FIRST ISSUE	1.6.05	JMH								



HPI

DESIGNED	APPROVED	SCALE(S)	ZONE(S)
CC	DB	1:50 in A3	
CAD FILE NAME		PAPER DRAWING ID	
SSTN-14		SSTN-14	