

NSW HFG STANDARD COMPONENTS

Room Layout Sheet

Room Name **Operating Room - Minor**

RLS Room Code **ORMS**

RDS Room Code **ORMS**

- AM ANAESTHETIC MACHINE
- AT ANAESTHETIC TROLLEY
- AS ADJUSTABLE SHELF
- COM/2 COMMUNICATION OUTLET - DOUBLE
- CAC CABLE ACCESS CAP
- DGL DOUBLE GLAZED WITH INTEGRAL VENETIAN BLINDS
- DDG DISPENSER - DISPOSABLE GLOVE
- DP DOOR AND FRAME PROTECTION
- ELCB'S EARTH LEAKAGE CIRCUIT BREAKERS
- EPJ EQUIPOTENTIAL JUNCTION BOX
- GPO/1 GENERAL PURPOSE OUTLET - SINGLE
- GPO/1 EP EMERGENCY POWER - SINGLE
- GPO/2 GENERAL PURPOSE OUTLET - DOUBLE
- GPO/C GENERAL PURPOSE OUTLET - SINGLE, CLEANER
- GT GOWNING TROLLEY
- IV INTRAVENOUS STAND
- IT INSTRUMENT TROLLEY
- KB KICK BUCKET
- OPS OBSERVATION PANEL WITH SLIDING PANEL
- PC2 90 mm PLASTERBOARD CORNICE FLUSH
- RCD RESIDUAL CURRENT DEVICE
- SK4 FLOOR VINYL COVED SKIRTING
- SR SCRUB RESISTANT
- TV TELEVISION
- V1 VINYL FLOORING, STANDARD
- WB WHITEBOARD

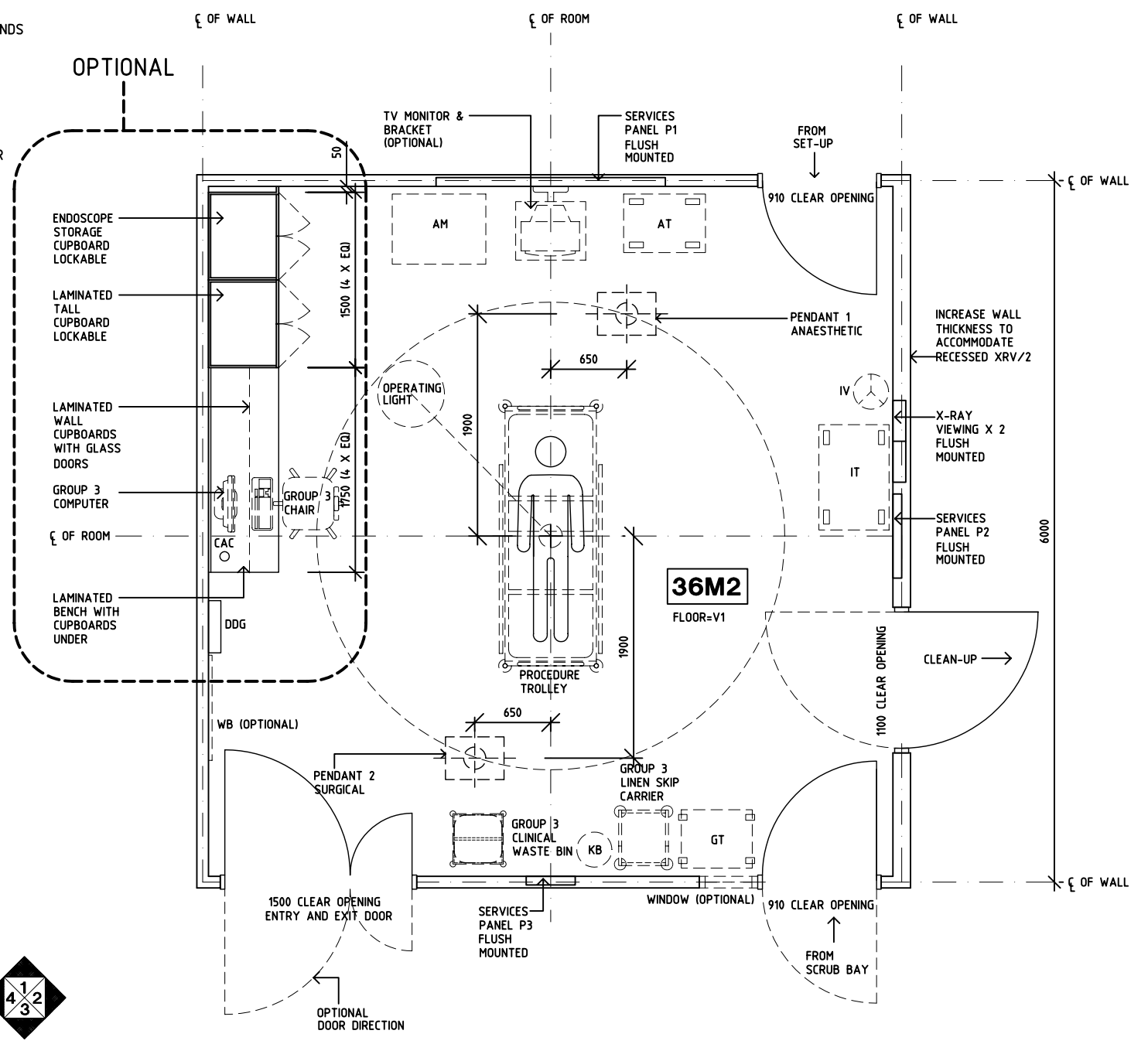
- SERVICES PANEL P1
- GPO/1 EP X 4
 - RCD
 - SURGICAL TOOL AIR & CONTROL PANEL
 - TOURNIQUET AIR AND CONTROL PANEL
 - GAS ALARM MONITOR
 - EPJ PANEL

- SERVICES PANEL P2
- CLOCKS CONTROLS
 - GPO/1 X 2
 - RCD
 - LIGHT SWITCHES
 - OPERATING LIGHT CONTROLS

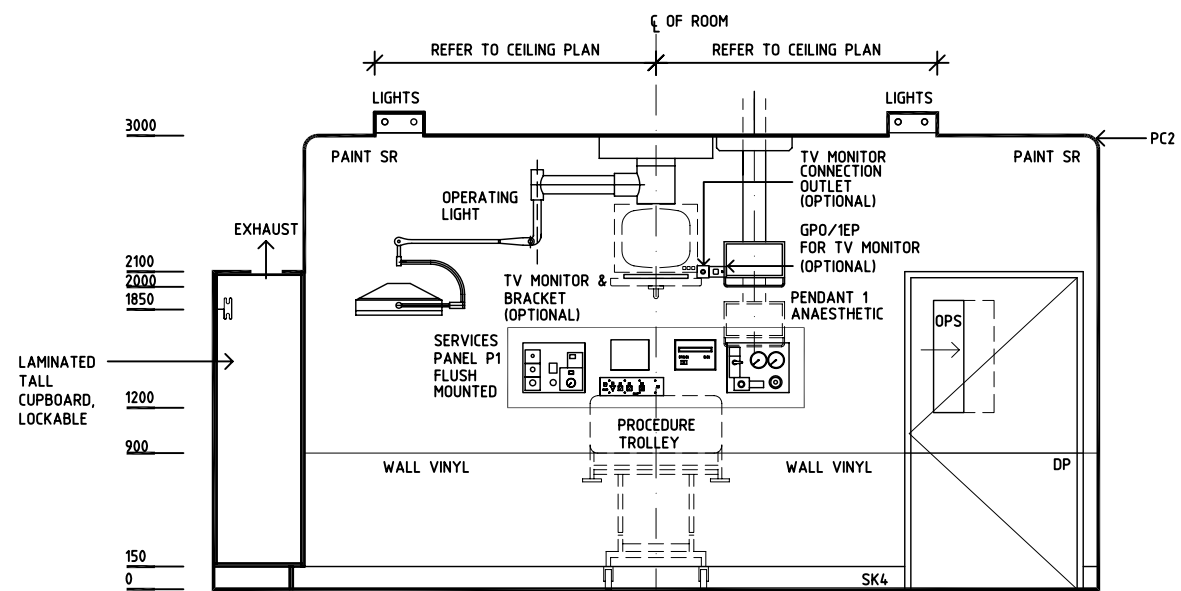
- SERVICES PANEL P3
- NURSE/STAFF ASSIST CALL
 - PORTER CALL (OPTIONAL)
 - EMERGENCY CALL
 - LASER-IN-USE INDICATOR
 - GPO/1 X 1
 - RCD

- PENDANT 1 ANAESTHETIC
- COM/2
 - GPO/1 X 4
 - GPO/1 EP X 4
 - OXYGEN x 2
 - RCD
 - NITROUS OXIDE x 1
 - MEDICAL AIR x 1
 - SUCTION X 2
 - SCAVENGE x 1

- PENDANT 2 SURGICAL
- COM/2
 - GPO/1 X 4
 - GPO/1 EP X 4
 - RCD
 - OXYGEN x 2
 - NITROUS OXIDE x 1
 - MEDICAL AIR x 1
 - SUCTION X 2
 - SCAVENGE x 1



PLAN



ELEVATION 1

REV	DESCRIPTION	DATE	BY	REV	DESCRIPTION	DATE	BY	REV	DESCRIPTION	DATE	BY
1	FIRST ISSUE	1.12.03	CC								
2	DRAWING REVISED	27.5.05	AL								
3	LIGHTING & PENDANT POSITIONS REVISED	20.03.06	BST								



THE UNIVERSITY OF
NEW SOUTH WALES

HPI

DESIGNED	APPROVED	SCALE(S)	ZONE(S)
CC	DB	1:50 in A3	
CAD FILE NAME ORMS		PAPER DRAWING ID ORMSa	

NSW HFG STANDARD COMPONENTS

Room Layout Sheet

Room Name **Operating Room - Minor**

RLS Room Code **ORMS**

RDS Room Code **ORMS**

- AM ANAESTHETIC MACHINE
- AT ANAESTHETIC TROLLEY
- AS ADJUSTABLE SHELF
- COM/2 COMMUNICATION OUTLET - DOUBLE
- CAC CABLE ACCESS CAP
- DGL DOUBLE GLAZED WITH INTEGRAL VENETIAN BLINDS
- DDG DISPENSER - DISPOSABLE GLOVE
- DP DOOR AND FRAME PROTECTION
- ELCB'S EARTH LEAKAGE CIRCUIT BREAKERS
- EPJ EQUIPOTENTIAL JUNCTION BOX
- GPO/1 GENERAL PURPOSE OUTLET - SINGLE
- GPO/1 EP EMERGENCY POWER - SINGLE
- GPO/2 GENERAL PURPOSE OUTLET - DOUBLE
- GPO/C GENERAL PURPOSE OUTLET - SINGLE, CLEANER
- GT GOWNING TROLLEY
- IV INTRAVENOUS STAND
- IT INSTRUMENT TROLLEY
- KB KICK BUCKET
- OPS OBSERVATION PANEL WITH SLIDING PANEL
- PC2 90 mm PLASTERBOARD CORNICE FLUSH
- RCD RESIDUAL CURRENT DEVICE
- SK4 FLOOR VINYL COVERED SKIRTING
- SR SCRUB RESISTANT
- TV TELEVISION
- V1 VINYL FLOORING, STANDARD
- WB WHITEBOARD

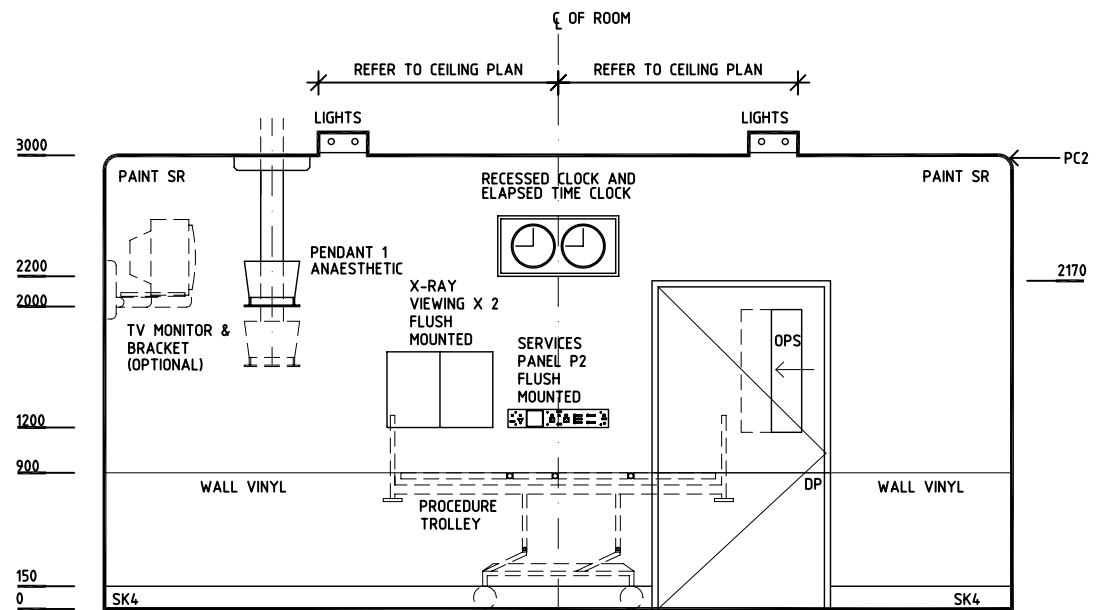
- SERVICES PANEL P1
- GPO/1 EP X 4
 - RCD
 - SURGICAL TOOL AIR & CONTROL PANEL
 - TOURNIQUET AIR AND CONTROL PANEL
 - GAS ALARM MONITOR
 - EPJ PANEL

- SERVICES PANEL P2
- CLOCKS CONTROLS
 - GPO/1 X 2
 - RCD
 - LIGHT SWITCHES
 - OPERATING LIGHT CONTROLS

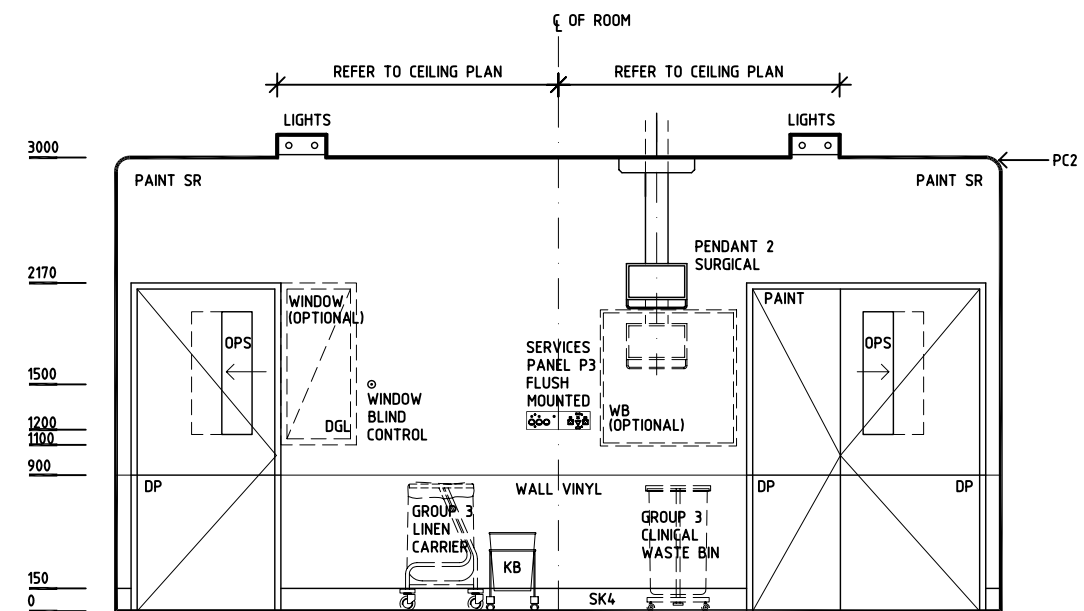
- SERVICES PANEL P3
- NURSE/STAFF ASSIST CALL
 - PORTER CALL (OPTIONAL)
 - EMERGENCY CALL
 - LASER-IN-USE INDICATOR
 - GPO/1 X 1
 - RCD

- PENDANT 1 ANAESTHETIC
- COM/2
 - GPO/1 X 4
 - GPO/1 EP X 4
 - OXYGEN x 2
 - RCD
 - NITROUS OXIDE x 1
 - MEDICAL AIR x 1
 - SUCTION X 2
 - SCAVENGE x 1

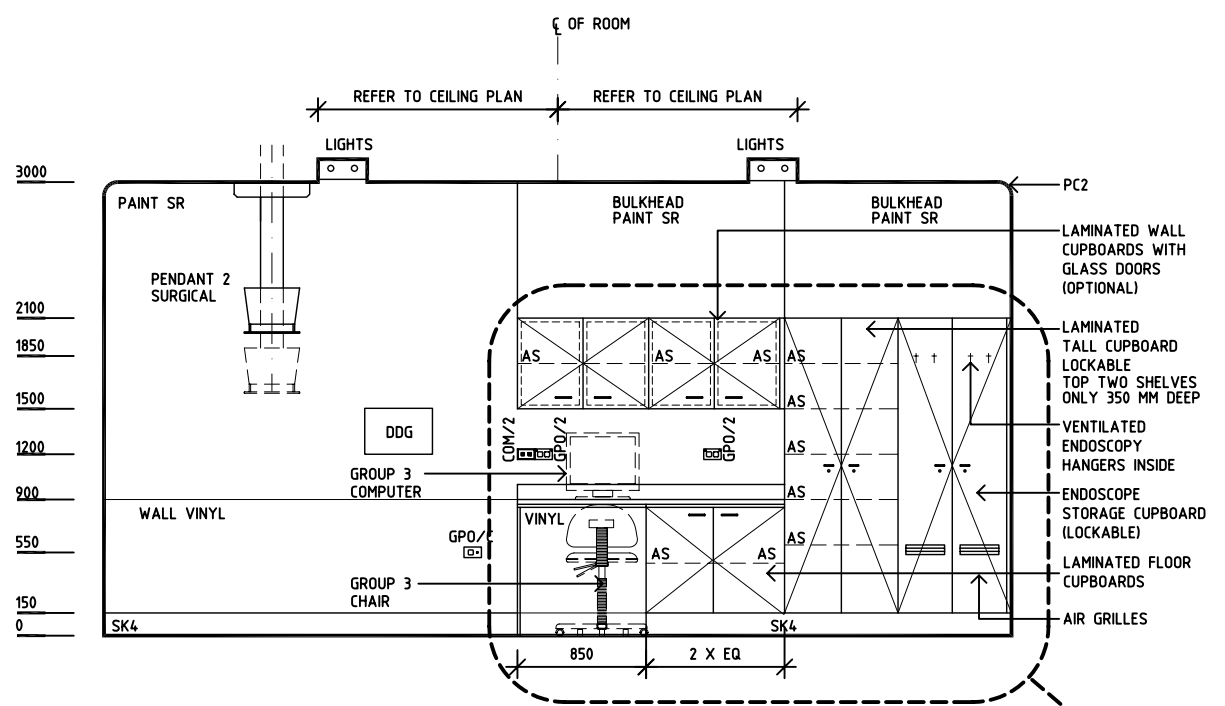
- PENDANT 2 SURGICAL
- COM/2
 - GPO/1 X 4
 - GPO/1 EP X 4
 - RCD
 - OXYGEN x 2
 - NITROUS OXIDE x 1
 - MEDICAL AIR x 1
 - SUCTION X 2
 - SCAVENGE x 1



ELEVATION 2



ELEVATION 3



ELEVATION 4

OPTIONAL

REV	DESCRIPTION	DATE	BY	REV	DESCRIPTION	DATE	BY	REV	DESCRIPTION	DATE	BY
1	FIRST ISSUE	1.12.03	CC								
2	DRAWING REVISED	27.5.05	AL								
3	LIGHTING & PENDANT POSITIONS REVISED	20.03.06	BST								