

# NSW HFG STANDARD COMPONENTS

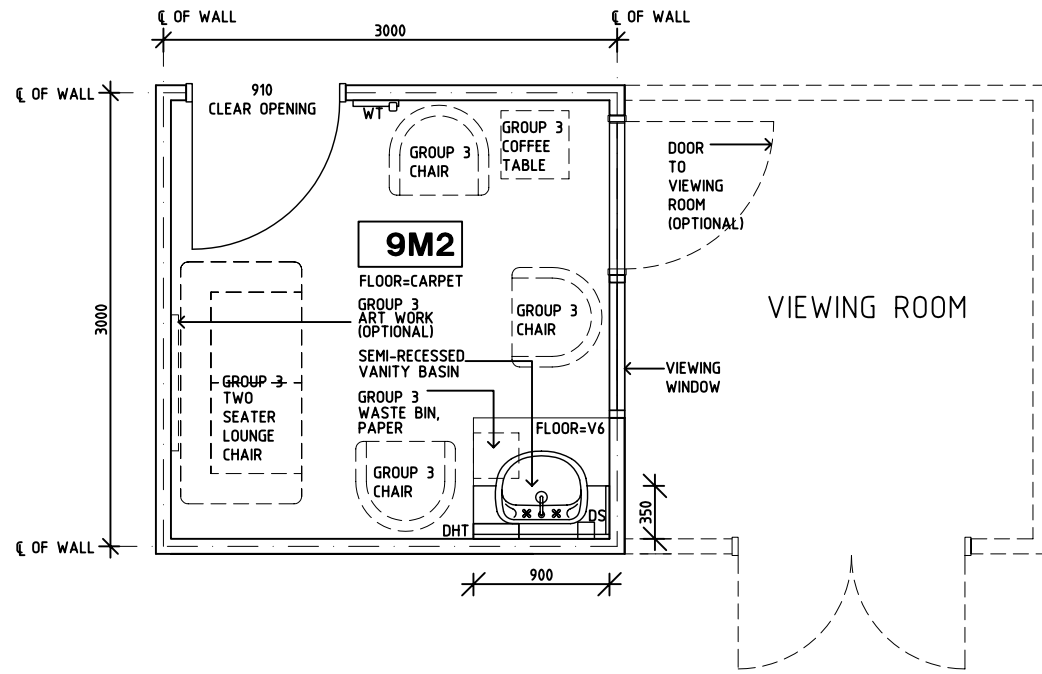
Room Layout Sheet

Room Name **Mortuary - Waiting**

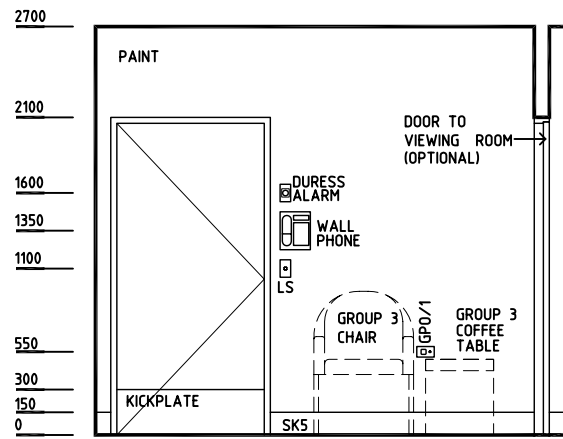
RLS Room Code **MOR-W**

RDS Room Code **MOR-W**

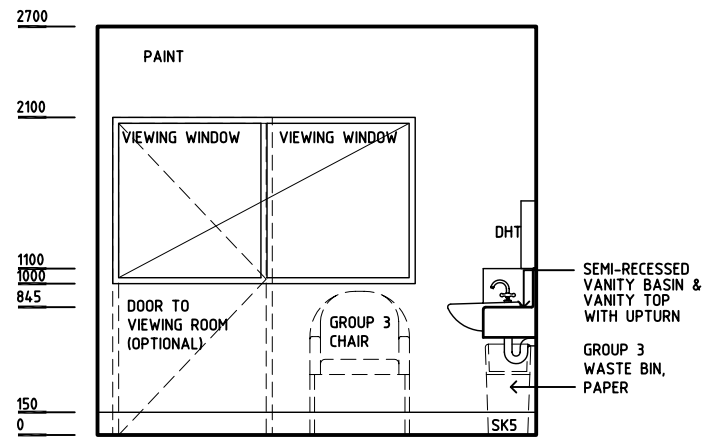
- DHT DISPENSER - HAND TOWEL
- DS DISPENSER - SOAP
- GPO/1 GENERAL PURPOSE OUTLET - SINGLE
- LS LIGHT SWITCH
- SK5 FEATHER EDGE VINYL SKIRTING
- V6 VINYL FLOORING, TEXTURED
- WT WALL TELEPHONE



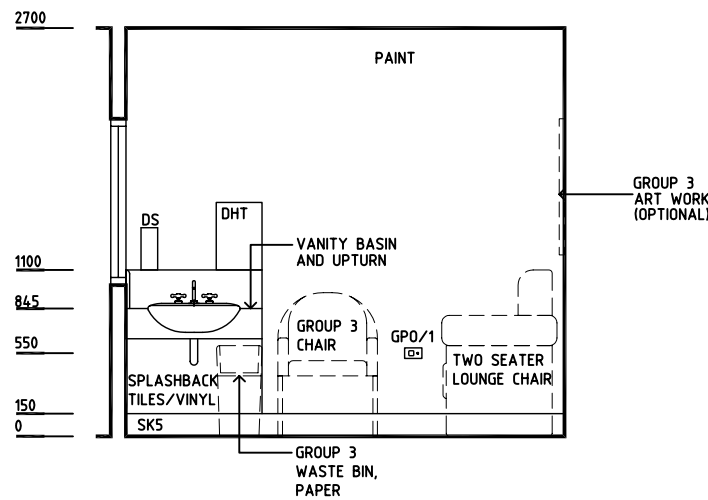
**PLAN**



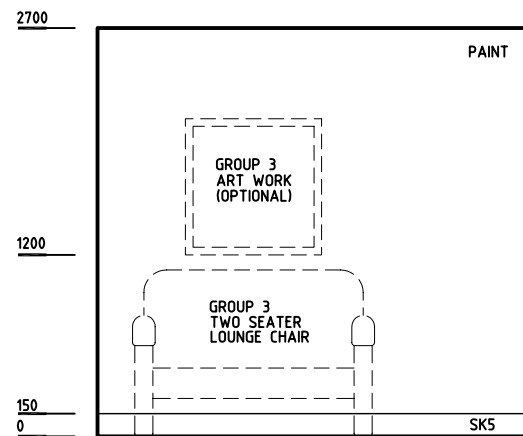
**ELEVATION 1**



**ELEVATION 2**



**ELEVATION 3**



**ELEVATION 4**

REV	DESCRIPTION	DATE	BY	REV	DESCRIPTION	DATE	BY	REV	DESCRIPTION	DATE	BY
1	FIRST ISSUE	15.5.05	HS								
2	SECOND ISSUE	24.4.06	ADS								