

# NSW HFG STANDARD COMPONENTS

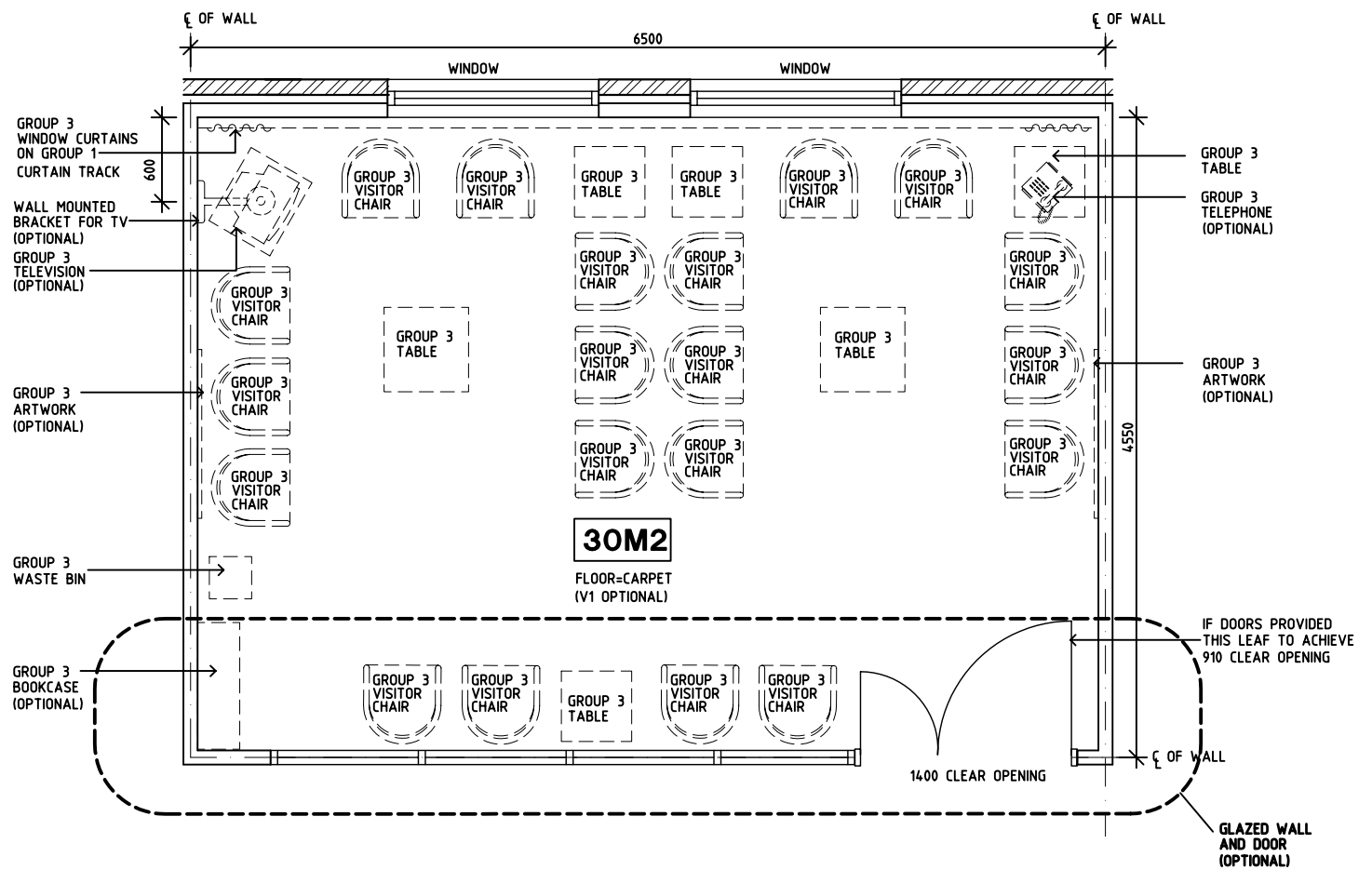
Room Layout Sheet

Room Name **Lounge - Patient, 30m2**

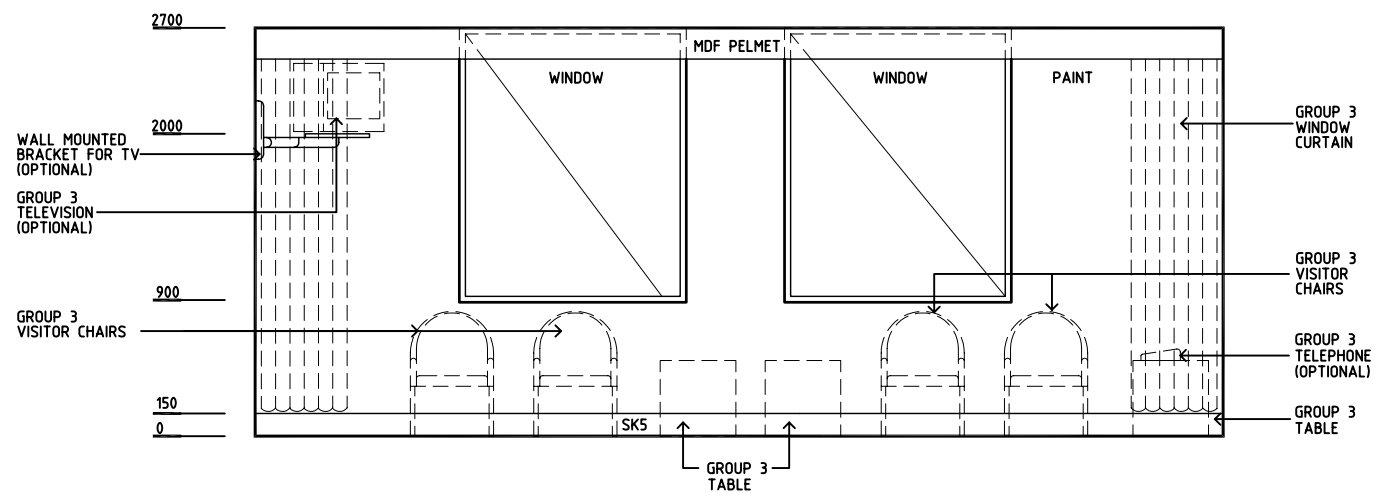
RLS Room Code **LNPT-30**

RDS Room Code **LNPT-30**

- COM/2 COMMUNICATIONS OUTLET - DOUBLE
- DP DOOR AND DOOR FRAME PROTECTION
- EC EMERGENCY CALL
- GPO/1 GENERAL PURPOSE OUTLET - SINGLE
- GPO/C GENERAL PURPOSE OUTLET - CLEANER'S
- LS LIGHT SWITCH
- MATV TV CONNECTION
- NA NURSE ASSIST CALL
- NC PATIENT NURSE CALL
- RCD RESIDUAL CURRENT DEVICE
- SK5 VINYL FEATHER EDGE SKIRTING
- V1 FLOOR VINYL - STANDARD



**PLAN**



**ELEVATION 1**

REV	DESCRIPTION	DATE	BY	REV	DESCRIPTION	DATE	BY	REV	DESCRIPTION	DATE	BY
1	FIRST ISSUE	11.7.05	BJ								
2	SECOND ISSUE	18.4.06	ADS								

DESIGNED	APPROVED	SCALE(S)	ZONE(S)
AL/HS/JH	DB	1:50 in A3	
CAD FILE NAME LNPT-30		PAPER DRAWING ID LNPT-30a	

# NSW HFG STANDARD COMPONENTS

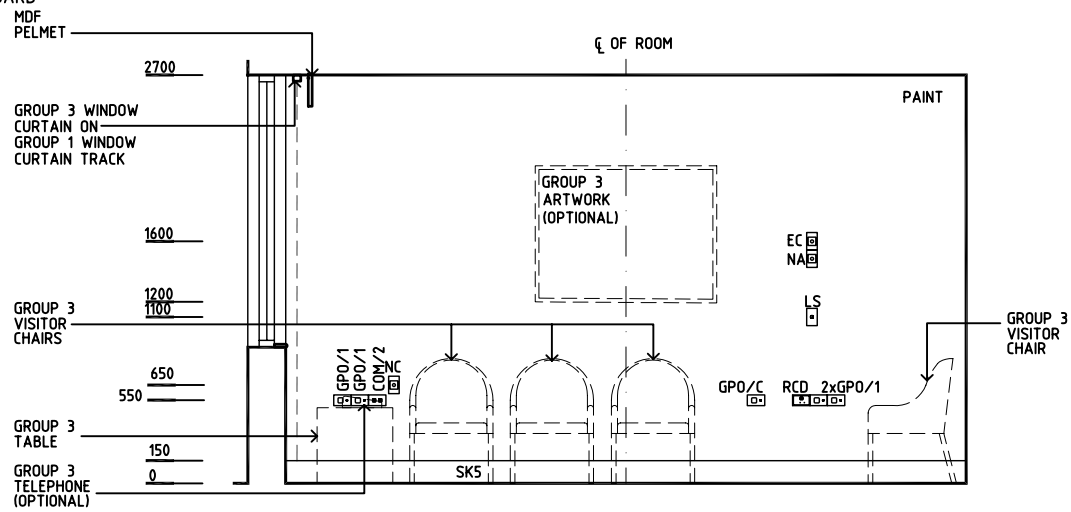
Room Layout Sheet

Room Name **Lounge - Patient, 30m2**

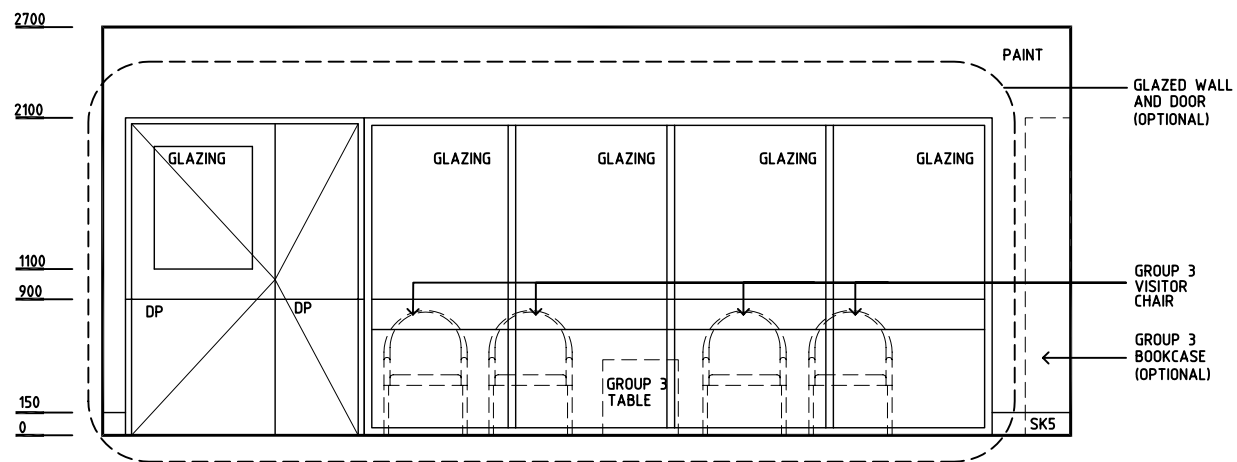
RLS Room Code **LNPT-30**

RDS Room Code **LNPT-30**

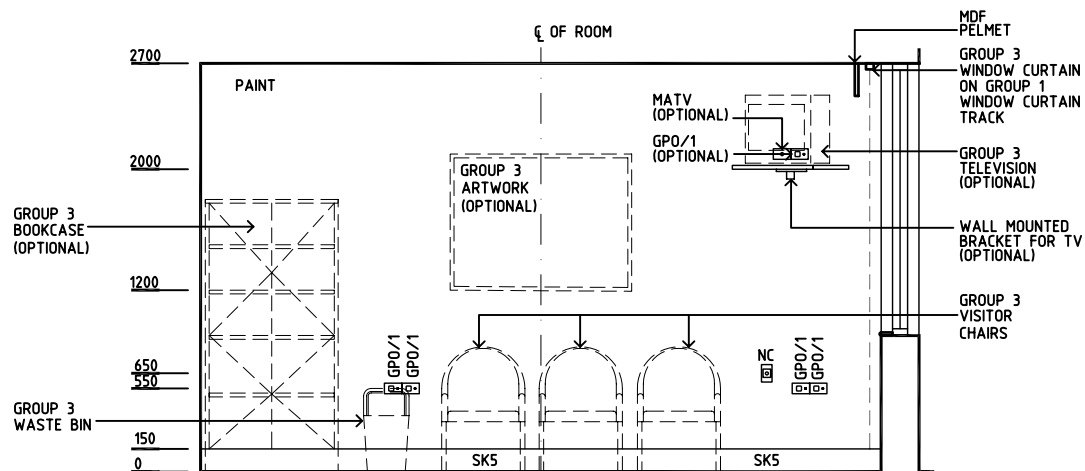
- COM/2 COMMUNICATIONS OUTLET - DOUBLE
- DP DOOR AND DOOR FRAME PROTECTION
- EC EMERGENCY CALL
- GPO/1 GENERAL PURPOSE OUTLET - SINGLE
- GPO/C GENERAL PURPOSE OUTLET - CLEANER'S
- LS LIGHT SWITCH
- MATV TV CONNECTION
- NA NURSE ASSIST CALL
- NC PATIENT NURSE CALL
- RCD RESIDUAL CURRENT DEVICE
- SK5 VINYL FEATHER EDGE SKIRTING
- V1 FLOOR VINYL - STANDARD



**ELEVATION 2**



**ELEVATION 3**



**ELEVATION 4**

REV	DESCRIPTION	DATE	BY	REV	DESCRIPTION	DATE	BY	REV	DESCRIPTION	DATE	BY
1	FIRST ISSUE	11.7.05	BJ								
2	SECOND ISSUE	18.4.06	ADS								