

### INDEX

	Description
502346 540 .0.10	INTRODUCTION
	Preamble
	Introduction
	Policy Statement
	Description of Unit
	PLANNING
	Operational Models
	Models of Care
	Operational Policies
	Planning Models
	Functional Areas
	Functional Relationships
	DESIGN
	Access
	Car Parking Requirements
	Disaster Planning
	Infection Control
	Environmental Considerations
	Space Standards and Components
	Safety and Security
	Finishes
	Fixtures and Fittings
	Building Services Requirements
	COMPONENTS OF THE UNIT
	General
	Standard Components
	Non-Standard Components
	APPENDICES
	Schedule of Accommodation
	Functional Relationships Diagram
	Checklists
	Referenses and Further Reading

## INTRODUCTION

### Preamble

---

502347 540 .1.00 In the Guide to the Role Delineation of Health Care Facilities, (Third Edition 2002), Paediatric Medicine and Paediatric Surgery are separately defined services under Maternal and Child Health Services.

6 levels of service are defined for each and planners should use this to assist in determining facility needs in conjunction with the approved Service Plan. Staff establishment and in accordance with the Process of Facility Planning.

It is essential to be aware of the impact of:

- Operational Policies
- Changes in clinical practice and models of care
- Change in role delineation or role delineation "creep" – usually upwards
- New technologies.

502348 540 .1.05 The trend towards more ambulatory care, less hospitalisation and shorter hospital stays for children has impacted on the design of paediatric units. Paediatric inpatients are generally sicker and more dependent, requiring higher levels of nurse staffing and observation than in the past.

There has been increasing recognition of the special physical and psychological needs of children in hospital and more concern to provide for them an environment which, as far as possible, normalises their stay. Even sick children can be quite active and need continuing opportunities for play and education. In addition, the needs of children with disabilities must be addressed.

Ideally children should not be admitted to an adult ward and in small units it may be appropriate to provide "swing" beds as a means of overcoming such an eventuality.

Provision for participation by parents in the care of their children is now regarded as an important principle of paediatric inpatient care.

Special facilities for children elsewhere in a hospital should be considered under individual departments, e.g.:

- Emergency Unit
- Medical Imaging Unit
- Operating Suite Unit

Paediatric Intensive Care services are only provided in Level 6 centres and are not addressed in this Guideline.

It is assumed that every unit will have formal intra-Area links as well as a formal relationship with a Children's Hospital within the network. Refer to the Service Plans for the Area Health Service and the Service Plan for the facility.

### Introduction

---

502349 540 .2.00 This Health Planning Unit (HPU) is a resource to assist project teams with the planning, design and construction of Paediatric and / or Adolescent Inpatient Units at any level of service. It should be read in conjunction with generic requirements and Standard Components (Room Data & Room Layout Sheets (RDS/RLS) in Parts A, B, C, D and E of these Guidelines.

All relevant information identified in the NSW Health Post Occupancy Evaluation Program 2, Paediatric Units dated February 2005 has been incorporated into this Guideline.

Facility design, must, where appropriate, also meet all necessary criteria to reach

accreditation standards with regard to design and equipment.

### Policy Statement

---

502350 540 .3.00 Guidelines for Networking of Paediatric Services in NSW, NSW Health Department, 2002.

Protecting People and Property – NSW Health Policy and Guidelines for Security Risk Management in Health Facilities, Chapters 9-14, Core Security Risk Controls and Chapter 15 – Security in the Clinical Environment.

PD2005\_576: Office Accommodation Policy – Public Health Organisations and Ambulance Service.

### Description of the Unit

---

502351 540 .4.00 DEFINITION OF HPU

The Paediatric/ Adolescent Unit is an Inpatient Unit with special provisions for babies, toddlers, and children and adolescents up to 16 years, specifically designed to reflect the varying physical and psychological needs of these age groups.

This Guideline addresses only those Paediatric / Adolescent Units that are part of a General Hospital and not facilities in dedicated Children's Hospitals. However, the components of the Inpatient Unit as described in the Schedule of Accommodation may be used as the building blocks for major centres.

In Paediatric / Adolescent Inpatient Units generally, bed occupancy levels and the age / diagnosis mix of patients will vary considerably according to the Service Plan. The design of accommodation in these units must therefore be flexible in provision of beds, cots and bassinets and in the mix of single and multiple occupancy rooms.

A mix of one, two and four bed rooms provides for flexible use of accommodation.

- one-bed rooms provide accommodation for the multiple functions of isolation nursing, parent live-in and high dependency care provided there is the necessary monitoring equipment.
- two-bed rooms provide suitable accommodation for older children.
- four bed rooms may be used for high dependency care, short term acute assessment and day care depending on the individual hospital's operational policies. They must be sized to allow for parent privacy (breastfeeding), and confidentiality.

The unit should be designed to achieve the maximum possible level of observation of patient areas. The staff station should be the focal point of the Unit and should overlook any high dependency beds.

502352 540 .4.05 GENERAL ARRANGEMENT

The arrangement of facilities will / may depend on the level of service but where the Hospital only has one or two inpatient units, facilities for adolescents may profitably be designed as a special "wing" of the Unit.

### Operational Models

---

#### 502353 540 .5.00 HOURS OF OPERATION

The Paediatric/Adolescent Unit provides in-patient care 24 hours per day, 7 days per week.

Activities between 7a.m. and 8p.m. (i.e. supervised play, treatments, nursing care, visiting, elective surgery) means an increase in utilisation of the Unit's facilities in these hours.

#### 502354 540 .5.05 NEEDS OF THE POPULATION

The needs of children and adolescents in hospital differ from those for adults.

It is a misconception to presume that because children are smaller they will need less space. In fact, a greater amount of space is required to accommodate such activities as parent participation in care, play by and between children, ambulation and family support.

Factors specific to paediatric care which will influence space utilisation and design features include:

- The mix of beds, cots and bassinets varies constantly. All rooms therefore must be of flexible use and sized to accommodate a bed. There must be adequate and easily accessible storage of the alternative beds, cots and bassinets..
- Rooms should be large enough to allow ambulation / play space for the child, space for parents to remain with the child and to allow some privacy for the family.
- Patients' special belongings, toys and drawings should be readily accessible and visible from the child's bed.
- More isolation facilities are required than in adult wards due to a higher incidence of contagious disease among children.
- Recreational playroom and facilities for continuation of education will be required for the developmental needs of differing age groups.
- Strollers, playpens and mobile toys such as tricycles are part of the everyday environment of children and storage space will be needed for this equipment.
- The need for observation of patients by nursing staff is greater in paediatric care, especially of infants and toddlers. However, the modesty of all patients and parents should be respected and adolescents will require more privacy.
- The need for parent/patient education activities and parent counselling means that an Interview Room is required.
- There is an increased need for attention to safety precautions and accident prevention.
- Patients should have an area which is "safe" i.e. where they know they will be free from treatments and distressing procedures.
- Areas which are likely to be occupied for any length of time by staff or patients should have windows.

## Part B - Health Facility Briefing and Planning

### Operational Models

---

503265 540 .5.06 MANAGEMENT OF BARIATRIC (SEVERELY OBESE) PATIENTS

Obesity in children and adolescents is becoming an increasing problem. It is important to ensure that at least one bedroom and en suite can accommodate a larger bed if necessary and easy use of lifting equipment. It may also be necessary to consider provision of a larger-than-usual examination couch in at least one Consult / Exam Room. (Also need to consider that the parent of a child may be very obese.

Refer to NSW Health Guideline - GL2005\_070, September 2005: Guidelines for the Management of OHS Issues Associated with the Management of Bariatric (Severely Obese) Patients.

503256 540 .5.07 ACCOMMODATION FOR MENTAL HEALTH PATIENTS

There is an increasing trend to “mainstream” pre-pubescent children with mental health conditions alongside a paediatric service to allow children access to all available paediatric facilities and mix with other children their own age as appropriate. Design requirements are addressed in the HFG 132 Child and Adolescent Unit.

502355 540 .5.10 ASSESSMENT BEDS

In hospitals where Emergency Units have no dedicated facilities for those children who, after initial treatment, either need a period of observation prior to discharge or where the decision to admit is as yet uncertain, an appropriately staffed Assessment Unit in the Paediatric Ward may be an option, rather than mixing children with adults. This places the child in the appropriate environment, reduces pressure on Emergency staff and is a more user-friendly option for children and their families.

502356 540 .5.15 PAEDIATRIC “PRECINCT”

Depending on the size of the Paediatric service, consideration should be given to creating a “Paediatric Precinct” that incorporates facilities for inpatient care, emergency assessment / observation, day care and outpatient clinics.

Depending on the Service Plan, facilities for day care could be a 4 bed room a little removed from the main ward but with access to all necessary support facilities.

Similarly, depending on volumes and utilisation, it may also be appropriate to operate dedicated paediatric clinics through the Unit via a small number of Consulting Rooms.

### Operational Policies

---

502357 540 .6.00 GENERAL

Detailed guidelines for the preparation of internal Operational Policies based on the overall Operational Policies of the Area Health Service are provided in Part B of these Guidelines and will vary between Paediatric/Adolescent Units according to local circumstances. These policies will cover such areas as:

- care by parents
- patient security
- age and other admission criteria
- the use of the unit for day only patients, outpatient clinics and assessment

## Part B - Health Facility Briefing and Planning

- meals and formula preparation and storage.

An example of an internal Operational Policy may be:

Rate-minders are to be used for all intravenous infusions on all paediatric patients. (This policy requires a large number of rate-minders, mobile IV poles on which to site them, wheelchairs able to accommodate IV poles and storage space for these items when not in use).

### 502358 540 .6.05 FORMULA PREPARATION

The individual Hospital and Area Health Service will determine whether formula preparation will be carried out in the Unit or in the Neonatal Nursery.

It is assumed that sterilisation of bottles and teats will be carried out in the Central Sterile Supply Unit.

A Formula Room may be used for teaching parents.

### 502359 540 .6.10 INTENSIVE AND HIGH DEPENDENCY CARE

Children requiring intensive care will be stabilised and transferred to a major Children's Hospital – either by ambulance or helicopter. Whether or not they need to be temporarily transferred to the adult ICU will be a clinical decision.

However, there will be occasions when a child needs a greater than normal level of treatment and observation but is not sick enough to need intensive care. Each facility must determine its policy on how these children will be managed. Options include:

- treating the child in their own room
- establishing an HDU within the Unit itself
- transferring to a hospital with a higher delineation for paediatric services
- temporary transfer to an adult HDU in consultation with the Neonatal Emergency Transport Service (NETS) when there is no other option.

The final decision may depend on staffing levels and available expertise.

### 502360 540 .6.15 STAFFING

The staffing assumptions made in this guideline are that there will be:

- a designated Director of Paediatric Services
- a Nurse Unit Manager (NUM) with at least three years experience in paediatrics (with no combined adult/paediatric roles)
- access to a Paediatric CNC
- majority of registered nursing staff who have paediatric qualifications or equivalent experience
- service provided by a specialist paediatrician on 24 hour call supported by a designated resident medical officer. There may also be a Paediatric Registrar.

Also refer to the Service Plan.

### 502361 540 .6.20 SCHOOLING

The average age of the unit's occupants and average length of stay should be carefully assessed when determining the need – if any – of facilities for education – whether a dedicated space or bedside laptops etc.

## Planning Models

---

502362 540 .7.00 LOCATION

Where possible, the Unit should be located on the ground floor to achieve direct access to an Outside Play Area, and to reduce the use of lifts and staircases

Where ground floor location is not possible, every attempt should be made to provide a secure open play area.

503257 540 .7.05 FLEXIBILITY

It is perhaps worth considering possible future use for adults with regard to room sizes etc.

## Functional Areas

---

502363 540 .8.00 - FUNCTIONAL ZONES

- The Paediatric/ Adolescent Unit will comprise the following functional areas:
- Inpatient areas including Bedrooms, Isolation Rooms, Play Areas, Multipurpose Activities area, Nursery and Feeding areas, En Suites and Bathrooms
- Day Stay / Assessment and Clinic Areas – if required by the Service Plan
- Parent / carer facilities
- Support areas including Staff Station, Utilities, Formula, Store, Pantry, Cleaner's and Disposal Rooms. Support rooms may be shared with adjacent units if appropriate
- Staff Areas including Offices, Meeting Rooms, Staff Change and Toilets may also be shared with adjacent units if design permits.

502411 540 .8.01 RECEPTION

Provision of a Reception if separate from the Staff Station and not intended for the Ward Clerk is not recommended as there is rarely the recurrent funding to staff and these spaces remain either inhospitably vacant or converted to other uses.

502364 540 .8.05 SANITARY ARRANGEMENTS

- En-suites are recommended for every 1-bed room, with hand basin, shower and toilet to provide total flexibility in the use of each room for isolation, very ill (high dependency) patients or care-by-parent patients
- A general bathroom containing a bath, shower, 2 toilets (1 low set), hand basin (low set) and baby bathing facilities provides for the babies, toddlers and younger children. The bath may be used for regular or burns (to Level 4 management) bathing. The low set toilet and hand basin are to encourage the independence of small children. However, such a multiple occupancy space may be problematic and should to be carefully considered. There needs to be space for a wheelchair and to operate a hoist.
- Separate unisex shower and toilet are recommended for older children / adolescents

## Part B - Health Facility Briefing and Planning

- All toilets must allow sanichair access and one toilet should provide for wheelchair access

The use of mobile baby baths is not recommended for occupational health and safety reasons.

### 502365 540 .8.10 HANDBASINS

Hand basins are provided to facilitate the frequent handwashing required to minimise cross infection in the ward. They are located in all single bedrooms, at the entry to the 1-bed rooms (at a ratio of 1 hand basin to 2 rooms), and between each pair of 2-bed rooms, in the Staff Station, in the treatment room and in the clean and dirty utility rooms.

### 502366 540 .8.15 TREATMENT ROOM

Where children share a room or even if in a single bedroom, it is preferable to carry out more complex and potentially painful treatments / procedures away from the bedside so that the child does not a) associate their bedroom with distressing activities and b) crying does not disturb other children. A parent often accompanies the child.

A Treatment Room should be provided in a zone away from the bed rooms and may be designed in conjunction with the Clean Utility Room where the supplies will be located.

The child may be brought into the room on the treatment room trolley but if transferred on their bed/cot, extra space will be required in the room for transfer to the treatment trolley and space to park the bed/cot outside the room.

Decor should help to distract the child and allay fears - ceiling and wall graphics may be considered.

### 502367 540 .8.20 CLEAN UTILITY ROOM

In addition to its normal functions, for safety's sake, it may be appropriate to locate the resuscitation trolley and the blanket warmer if provided in this room. In the latter instance, care should be taken to ensure the cabinet is not installed near the drug storage area where heat may adversely affect the drugs. The resuscitation trolley must however be readily accessible.

If this is the decision, an additional 1-2m<sup>2</sup> will need to be added to the size of the room.

### 502368 540 .8.25 STORAGE

Storage will be required for toys and educational and recreational equipment. TVs where provided at the bedside should be ceiling-mounted.

Storage space shall be provided to permit exchange of cribs, cots and adult beds.

Provisions shall also be made for storage of equipment and supplies such as patient cots and recliners for parents and extra linen for parents who stay with the patient overnight.

## Part B - Health Facility Briefing and Planning

### Functional Relationships

---

502369 540 .9.00 The Paediatric/ Adolescent Unit should be located with ready access to the Emergency Unit, Operating Unit, Critical Care areas and Medical Imaging. It should be located to avoid the need for through traffic.

In small units, collocation with an adult ward with swing beds may facilitate management in times of high occupancy.

## DESIGN

### Access

---

502370 540 .10.00 EXTERNAL

Entrances to the hospital and routes to the Paediatric/Adolescent Unit should ensure minimal contact with sick or injured adult patients

502371 540 .10.05 INTERNAL

Internal access to the Unit needs to be controlled by either human or physical means at all times to prevent unauthorised access or patient egress. This may be by appropriate location of Staff Station or Reception or by video surveillance and electronic door controls, particularly after hours. However the Staff Station is not always occupied and in the absence of a ward clerk, the impact of monitoring video monitors on staffing levels needs to be considered.

### Car Parking Requirements

---

502372 540 .11.00 For staff parking, refer to Part C, Clause 790 of these Guidelines for further information.

### Disaster Planning

---

502373 540 .12.00 Refer to Part B Clause 80 and Part C of these Guidelines for further information.

### Infection Control

---

502374 540 .13.00 The infectious status of many patients admitted to the Unit may be unknown. All body fluids should be treated as potentially infectious and adequate precautions should be taken particularly with small children.

Linen trolley bays must have doors to prevent contamination.

Refer to Part D of these Guidelines for further information.

### Environmental Considerations

---

502375 540 .14.00 ACOUSTICS

Babies, toddlers and children are naturally boisterous at play and noisy when distressed. The sounds of children crying or in pain, the noise of unfamiliar equipment or, conversely, extreme quiet are all anxiety-provoking.

Ceiling acoustic tiles, absorbent panels, curtains, upholstered furniture and carpets can be used to absorb and soften sounds in all patient and most other areas.

## Part B - Health Facility Briefing and Planning

The treatment room will require maximum acoustic containment to prevent the sounds of distressed children reaching those in the other patient areas. (In paediatric units, painful procedures are performed in the treatment room rather than at the bedside).

Auditory privacy will be required in the interview room and NUM office.

### 502376 540 .14.05 NATURAL LIGHT

Natural light to all bedrooms and to rooms such as playrooms, parent lounge.

### 502377 540 .14.10 PRIVACY VERSUS OBSERVATION

Design should allow nursing staff to have optimal observation of all patient areas and for the children to be able to see the staff in order to feel reassured and safe.

The need for observation and the safety of children must, however, be balanced against the need to protect the privacy, personal dignity of patients and their parents.. This can be achieved by curtains on windows and other glazed panels and the use of bed screens.

There is a particular need for privacy for children and adolescents during:

- examinations
- treatment
- bathing
- dressing
- times of distress

### 502378 540 .14.15 INTERIOR DESIGN

In the Paediatric/Adolescent Unit it is important to use decor to positively create an environment which is as non-institutional as possible.

Psychological reassurance will be provided by scaling the environment to the size of the child as far as possible.

Graphics provide distraction for children and visitors and can make areas more interesting and inviting. They can be used in all patient and common areas including corridors, treatment rooms, play room (inside) bed rooms and lounges.

Wall decorations should be at a height visible by children lying supine in bed and also some low enough for toddlers to see. Ceiling decoration should also be considered.

Display panels should be provided in bedrooms for the child to decorate in his/her own way. However, swallowed pins is a real issue with children so boards that do not need pins should be provided (velcrose-type material).

Also refer to Part C of these Guidelines.

## Space Standards and Components

### 502379 540 .15.00 ERGONOMICS

Refer Part C of these Guidelines for information.

### 502380 540 .15.05 HUMAN ENGINEERING

Refer Part C of these Guidelines for information.

502381 540 . 15.10 ACCESS AND MOBILITY

Refer Part C of these Guidelines for information.

502382 540 . 15.15 WINDOWS

- The height of the windows should enable children in their cots/beds to see outside.
- Natural ventilation to all patient bed rooms (with means of restricted opening for patient safety) provides fresh air, cross-ventilation and enables the children to hear and smell the outdoors. However, insect screen must be provided to all external doors and openable windows and glass must comply with AS/NZS 2208: 1996 - Safety glazing material in buildings.
- A low and wide internal window ledge will be well used by children.
- The Treatment and Tutorial Rooms will require provision for blackout.

Also refer to Part C of these Guidelines for further information.

502383 540 . 15.20 DOORS

Door swings must be planned and arranged so that there is no danger of hitting a small child on other side.

Refer Part C of these Guidelines for information.

## Safety and Security

502384 540 . 16.00 SAFETY

The design of the unit environment should be such that all possible risks to the safety of the children are minimised including risks of abduction, and take into account the natural curiosity of children.

Design and layout must prevent access by children to areas containing equipment or material likely to be harmful to them, including:

- beverage pantry and heated food trolleys
- utility rooms, cleaners rooms, storage rooms, linen bay
- resuscitation trolley
- disposal room
- treatment room
- medication room
- ward exits.

In order to prevent injury whilst patients undertake their normal daily activities in the ward area, surface finishes, furniture and glazing must be of design and material appropriate to their use (e.g. rounded edges on furniture at low levels, safety glass in patient areas)

Provision of warm (thermostatically controlled) water to all areas

Fitting of child-proof locks to all cupboards

## Part B - Health Facility Briefing and Planning

Designing barriers and balustrades so they are non-climbable but can be seen through by toddlers

Provision of non-scalable safety fencing of adequate height around external play areas especially where this is not located at ground level

Service panels must be out of reach of small children

Similarly, nurse and emergency call buttons must be sited out of the reach of curious or mischievous hands.

Door handles out of the reach of small children.

Bedrooms to have doors with high and low vision panels and handles.

Power points in child-occupied areas must be above child height and shuttered

Consider the use of convex mirrors to blind corners.

Care with location of main access door so that if not at the ward perimeter, it does not impede access to rooms outside.

Glass observation panels in doors need to be sized so as to enable staff to see in and low enough to be able to see a small child on the other side.

As far as possible, safety measures should not cause avoidable inconvenience nor impair efficiency.

### Space Standards and Components

502385 540 .16.05 SECURITY

Security issues are of increasing importance due to the prevalence of violence and theft in the hospital environment. In designing the unit, consideration should be given to:

- personal security of patients, parents and staff
- security of property of patients, visitors and staff
- security of hospital equipment and stores items
- drug security
- access and egress/unauthorised intrusion
- night staffing conditions
- security lighting

Egress points must be secured and should be monitored wherever possible to minimise and contain the risk of a child's unaccompanied egress or abduction from the unit and prevent interference from unauthorised persons.

Security measures may include

- direct staff observation
- closed circuit TV
- restricted window openings
- high level door latches
- stable doors
- locked doors. And monitoring unit access to

Security and safety issues need to be considered in conjunction to ensure that they do not conflict

Also refer to NSW Health Manual – Protecting People and Property, Section Two, Core Security Risk Controls.

## Finishes

---

502386 540 .17.00 WALL PROTECTION

Refer to Part C of these Guidelines

502387 540 .17.05 FLOOR FINISHES

Carpet in corridors not suitable for children.

Refer to Part C of these Guidelines

502388 540 .17.10 CEILING FINISHES

If patients with mental health conditions such as anorexia are included in the patient population, care should be taken with regard to use of ceiling tiles that can be pushed up by a patient standing on the bed and where food can be secreted.

Refer to Part C of these Guidelines

## Fixtures & Fittings

---

502389 540 .18.00 DOOR HARDWARE

Door hardware must be designed so as not to trap small fingers or be located out of reach.

502390 540 .18.05 Refer to part C of these Guidelines and to the Room Data Sheets (RDS) and Room Layout Sheets (RLS) for further detailed information

## Building Service Requirements

---

502391 540 .19.00 INFORMATION TECHNOLOGY / COMMUNICATIONS

In addition to the usual hospital communication systems, the Paediatric/Adolescent Unit has particular needs. These include the need for close observation of patient areas and meeting the psychological needs of children in maintaining contact with family members and friends.

Communication systems may include:

- staff call and emergency assistance. Operational policy should cover such matters as whether or not a patient call can be cancelled from the staff station.
- closed-circuit television monitoring where this is necessary to ensure adequate observation of patient areas and access/egress points.
- telephone services for staff, patients, parents and visitors. The extent of provision, location, type (i.e. fixed or portable) and charging will need to be addressed by the operational policies.
- television in all single bedrooms, particularly isolation rooms.
- Internet access for older children and adolescents is very important
- alarm systems where necessary (e.g. dangerous drug cupboard opening)

## Part B - Health Facility Briefing and Planning

Also refer to Part A, Section 80.17 of these Guidelines.

**502392** 540 .19.05 DURESS ALARM SYSTEM

Locate at Receptions and Staff Stations.

Refer to NSW Health Manual – Protecting People and Property, Chapter 11 – Alarm Systems and Chapter – Duress Response Arrangements.

**502393** 540 .19.10 CHILD MONITORING / TAGGING

May need to be considered especially for infants and toddlers.

**502394** 540 .19.15 CALL SYSTEMS

Non-scrolling annunciator panels with the ability to display all beds on one panel are preferred and must be easily visible in corridors.

### COMPONENTS OF THE UNIT

#### General

---

**502395** 540 .20.00 GENERAL

The Paediatric/ Adolescent Unit will consist of a combination of Standard Components and Non-Standard Components.

Standard Components must comply with details in Standard Components described in these Guidelines. Refer also to Standard Components Room Data Sheets.

#### Standard Components

---

**502396** 540 .21.00 Provide the Standard Components as identified in the Schedule of Accommodation.

#### Non-Standard Components

---

**502397** 540 .22.00 Provide the Non-Standard Components as identified in this section and in the Schedule of Accommodation, according to the Operational Policy and Functional Brief.

**502398** 540 .22.05 BATHROOM – PAEDIATRIC

##### DESCRIPTION AND FUNCTION

The bathroom has adjustable height paediatric peninsula bath, shower, hand basin and toilet facilities to attend the hygiene and treatment needs of babies, toddlers and older children. (NOT adolescents)

A baby bath is required and should be bench-set, a baby change bench / table and baby and adult scales. Mobile baby baths are not recommended.

Functions include::

- bathing of patients for treatment purposes

## Part B - Health Facility Briefing and Planning

- weighing and height measuring on admission

Unaccompanied patients may not have access to this room (refer Operational Policy).

### LOCATION AND RELATIONSHIPS

Centrally located to the bed rooms, with good visual observation and quick access from the Staff Station.

### CONSIDERATIONS

Storage of

- mobile patient lifter
- baby clothes and nappies
- baby care supplies.
- bath cleaning equipment

Effective ventilation

Warm water

It must be designed for use by more than one child at a time whilst preserving acoustic and visual privacy.

Consideration should be given to providing an extra room for admission procedures

### 502399 540 .22.10 PLAY ROOM – INTERNAL

#### DESCRIPTION AND FUNCTION

The Inside Play Room provides an area where children may go for play, recreation, education and remedial activities. The following designated area may be provided:

- Dining for small children
- Television
- Reading / playing board games

It is envisaged that parents and siblings will accompany their children at times.

Occupancy: Up to 10 – including the Play Therapist - at 3m2 per person plus storage.

Functions and activities will include:

- Structured and unstructured play activities
- Reading
- Watching television
- Drawing (chalkboard, paper)
- Board games
- Meals, snacks, drinks for patients
- Remedial therapy activities
- Education

The patients may be:

- ambulant / crawling
- in bed / cot / bassinet
- in a stroller / pram
- on a tricycle
- on crutches

## Part B - Health Facility Briefing and Planning

- in a wheelchair
- in a playpen
- oxygen-dependent
- on IV therapy
- in traction.

### LOCATION AND RELATIONSHIPS

Access must allow for a bed with orthopaedic fittings.

Direct access to the Outside Play Area

Good observation from Staff Station and general nursing circulation areas required.

### CONSIDERATIONS

The following are required:

- Natural light (northerly aspect where possible)
- Bright and cheerful decor
- Acoustic absorption
- Means of restricted window opening for natural ventilation when required

Corridor wall and door to be glazed to allow observation of patients.

Dividing walls may be glazed to a height suitable to allow observation of patients.

Storage (not necessarily within the Play Area) required for:

- hospital-provided toys and games
- books, education material and CDs / DVDs
- chairs – stacking - several sizes
- high chairs
- tricycles
- playpen (fold-away)
- strollers and prams
- computers

If paints are to be used, a small sink should be fitted.

Consider a toddler-height handbasin for use before and after meals / snacks.

### 502400 540 .22.15 PLAY ROOM – EXTERNAL

#### DESCRIPTION AND FUNCTION

An outdoor area where children may go for play, recreation, remedial activities and family visiting.

Functions and Activities include:

- structured and unstructured play activities
- remedial therapy activities
- family interaction and quiet time

#### LOCATION AND FUNCTIONAL RELATIONSHIPS

Observation from the Staff Station.

Direct access to / from Inside Play Area

Consideration should be given to external access for maintenance purposes.

## Part B - Health Facility Briefing and Planning

### CONSIDERATIONS

Threshold should facilitate ease of manoeuvring for:

- patients in wheelchairs
- patient beds/cots/bassinet
- those who have difficulty in walking

Requires protection from extreme weather conditions.

Ground area may be covered with outdoor carpet or pavers but not loose materials such as gravel or woodchips.

Non-scalable safety fence high enough to prevent removal of children is required for the surrounding area.

Access and egress should only be from the ward area.

## APPENDICES

### Schedule of Accommodation

502401 540 .23.00 A Generic Schedule of Accommodation for a Paediatric and Adolescent Unit at Level 2, 3, 4, 5, and 6 follows.

Note: (o) in Qty/xm2 column = Optional

ROOM/SPACE	Standard Component			Levels 2 / 3	Levels 4 / 5	Level 6	Remarks
				Qty x m2	Qty x m2	Qty x m2	
				See remarks	Stand-Alone Unit	Children's Hospital	For Levels 2 / 3 -Swing bedded zone of adult IPU, eg Maternity

502402 540 .23.10 BEDROOMS

BEDROOMS				10 Beds	30 Beds	30 Beds	Bed numbers are nominal and "mix" may be adjusted
1 BED ROOM	yes			3 x 15	19 x 15	23 x 15	Bed/chair for parent. For mangement of airborne infections such as chickenpox.
BAY - HANDWASHING - TYPE B	yes			1 x 1	2 x 1	2 x 1	Outside 2 pairs of Standard Isolation Rooms
BAY - PERSONAL PROTECTIVE EQUIPMENT	yes			1 x 2	2 x 2	2 x 2	Collocate with Handwash Bays
1 BED ROOM - ISOLATION CLASS N	yes			0	2 x 15	2 x 15	Bed/chair for parent. Class N Isolation Rooms
ANTE ROOM	yes			0	2 x 6	2 x 6	For Class N Isolation Rooms
1 BED ROOM - SPECIAL	yes			1 x 18	1 x 18	1 x 18	For bariatric patients
2 BED ROOM	yes			1 x 25	2 x 25	2 x 25 (o)	For older children
EN SUITE - STANDARD	yes			4 x 5	25 x 5	27 x 5	To 1 & 2 bed rooms
EN SUITE - SPECIAL	yes			1 x 7	1 x 7	1 x 7	For bariatric patients
4 BED ROOM	yes			1 x 42	1 x 42	0	For babies and toddlers. May also be used for high dependency at Levels 4 / 5

## Part B - Health Facility Briefing and Planning

SHOWER - PATIENT	yes			1 x 4 (o)	1 x 4 (o)	0	To 4 Bed Room. If used exclusively for babies, may not be needed
TOILET - PATIENT	yes			1 x 4 (o)	1 x 4 (o)	0	To 4 Bed Room. If used exclusively for babies, may not be needed
BAY - LINEN (& BLANKET WARMER)				1 x 3	2 x 3	2 x 3	

### 502403 540 .23.20 CHILD--SPECIFIC AREAS (At Levels 2 & 3, may be part of a Maternity Unit)

CHILD--SPECIFIC AREAS							
FEEDING ROOM	yes			1 x 9	1 x 9	1 x 9	Also for use of breast pump if necessary. NSW HFG recommended 9m2.
FORMULA ROOM	yes			1 x 7	1 x 7 (o)	1 x 7(o)	May be located in NICU
PLAY ROOM				1 x 12 (o)	1 x 60	1 x 60	4 patients & 20 patients respectively at 3m2 per patient; adjust as required. Also used by Play

### 502404 540 .23.30 OLDER CHILDREN-SPECIFIC AREAS

OLDER CHILDREN-SPECIFIC AREAS							
RECREATION ROOM				1 x 14 (o)	1 x 35 (o)	1 x 35 (o)	4 patients & 10 patients respectively @ 3.5m2 per patient. Computers, TV, music etc. Optional
QUIET STUDY ROOM				1 x 9 (o)	1 x 15 (o)	1 x 15 (o)	2 and 4 patients respectively

### 502405 540 .23.40 ASSESSMENT / DAY STAY / AMBULATORY CARE

ASSESSMENT / DAY STAY / AMBULATORY CARE							Assumes dedicated ED; Day Ward and Clinics @ level 6 Unit
RECEPTION	yes			0	1 x 10	0	
WAITING	yes			Share	1 x 20	0	16 people including 2 wheelchairs at 1.2 sqm and 1.5 sqm per person
CHILD PLAY AREA				Share	1 x 9	0	
TOILET / BABY CHANGE - DISABLED	yes			Share	1 x 5	0	
4 BED ASSESSMENT/DAY STAY ROOM	yes			1 x 42 (o)	42	42 (o)	4 beds. Unless there is a dedicated paediatric area in Emergency Unit, may be used for short
SHOWER - PATIENT	yes			1 x 4 (o)	1 x 4	0	
TOILET - PATIENT	yes			1 x 4 (o)	1 x 4	0	
CONSULT ROOM				1 x 14 (o)	14	0	. Larger size for children. Number of rooms will be dependent on anticipated occasions of service
MEETING (INTERVIEW) ROOM				1 x 9 (o)	1 x 12	0	
BAY - LINEN TROLLEY	yes			Shared with ward	1 x 2	0	
STAFF BASE/CLEAN UTILITY				1 x 4	1 x 10	0	
DIRTY UTILITY - SUB	yes			Shared with ward	1 x 8	0	

# Part B - Health Facility Briefing and Planning

## Schedule of Accommodation

502406 540 .23.50 SHARED SUPPORT AREAS

SHARED SUPPORT AREAS							
MEETING (INTERVIEW) ROOM				Shared	1 x 9	1 x 9	2-3 people
MEETING (INTERVIEW) ROOM				0	0	1 x 12	4-6 people
LOUNGE - PARENT				1 x 9 (o)	1 x 15	1 x 15	May include Beverage Bay & sofa bed
BATHROOM - PAEDIATRIC				1 x 16 (o)	1 x 16	1 x 16	Include a baby bath, change table and low-set toilet for toddlers
STAFF STATION	yes			Shared	1 x 14	1 x 14	
OFFICE - CLINICAL / HANDOVER	yes			Shared	1 x 15	1 x 15	
STORE - PHOTOCOPY / STATIONERY	yes			Shared	1 x 8	1 x 8	May be collocated with offices
BAY - PARKING W/CHAIRS & STROLLERS	yes			1 x 4	2 x 4	2 x 4	
BAY - RESUSCITATION TROLLEY	yes			Shared	2 x 2	2 x 2	Assumes one for infants, one for adolescents
CLEAN UTILITY / MEDICATION ROOM	yes			Shared	1 x 12	1 x 12	
TREATMENT ROOM	yes			Shared	1 x 14	1 x 14	Interconnecting door with Clean Utility if required
DIRTY UTILITY	yes			Shared	1 x 10	1 x 10	May need 2 rooms depending on ward layout
DISPOSAL ROOM	yes			Shared	1 x 8	1 x 8	
PANTRY	yes			Shared	1 x 8	1 x 8	Parent Access
THERAPY / MULTIPURPOSE ROOM				0	1 x 20	1 x 20	
STORE - BEDS / COTS				1 x 12	1 x 25	1 x 25	Total storage at 1.5 sqm per bed
STORE - EQUIPMENT	yes			Shared	1 x 20	1 x 20	Total storage at 1.5 sqm per bed
STORE - GENERAL	yes			Shared	1 x 9	1 x 9	
CLEANER'S ROOM	yes			Shared	1 x 5	1 x 5	
DISCOUNTED CIRCULATION %				32%	35%	35%	

502407 540 .23.60 STAFF OFFICES & AMENITIES

Note : Office/workstation and meeting room sizes are in accordance with NSW Health Policy Directive PD2005-576 - Office Accommodation Policy - Public Health Organisations and Ambulance Service

STAFF OFFICES & AMENITIES							
OFFICE - SINGLE - DIRECTOR	yes			0	1 x 12	1 x 12	

## Part B - Health Facility Briefing and Planning

OFFICE - SINGLE - NUM	yes			1 x 9	1 x 9	1 x 9	
OFFICE - NURSING - SHARED	yes			0	12	12	Refer to staff establishment for numbers. May be mix of offices and open plan
OFFICE - MEDICAL - SHARED	yes			0	12	12	
OFFICE - WORKSTATION - MEDICAL	yes			5.5	5.5	5.5	
OFFICE - WORKSTATION - NURSING	yes			5.5	5.5	5.5	Refer to staff establishment for numbers. May be mix of offices and open plan
OFFICE - WORKSTATION - ALLIED HEALTH	yes			5.5	5.5	5.5	Refer to staff establishment for numbers. May be mix of offices and open plan
MEETING ROOM	yes			Share	1 x 20	1 x 20	
STAFF ROOM	yes			Share	1 x 15	1 x 15	
PROPERTY BAY - STAFF	yes			Share	1 x 2	1 x 2	
TOILET - STAFF	yes			Share	2 x 3	2 x 3	
SHOWER - STAFF	yes			Share	1 x 2 (o)	1 x 2 (o)	
DISCOUNTED CIRCULATION %				20%	30%	30%	

### Functional Relationships

502408 540 .24.00 A diagram of key functional relationships is attached.

### Checklists

502409 540 .25.00 A Security Checklist is appended to this document. Refer also to Part C of these Guidelines for general requirements.

### References and Further Reading

502410 540 .26.00 DS-22 HBG Paediatric / Adolescent Inpatient Unit, NSW Health, Capital Works Branch, August 1992

NH Estates Schedules of Accommodation v2.0 – HBN23 - Hospital Accommodation for Children and Young People, April 2005.

540 Paediatric / Adolescent Unit, Department of Human Services, Victoria, November 2005.

Guidelines for Networking of Paediatric Services in NSW, NSW Health, Department 2002

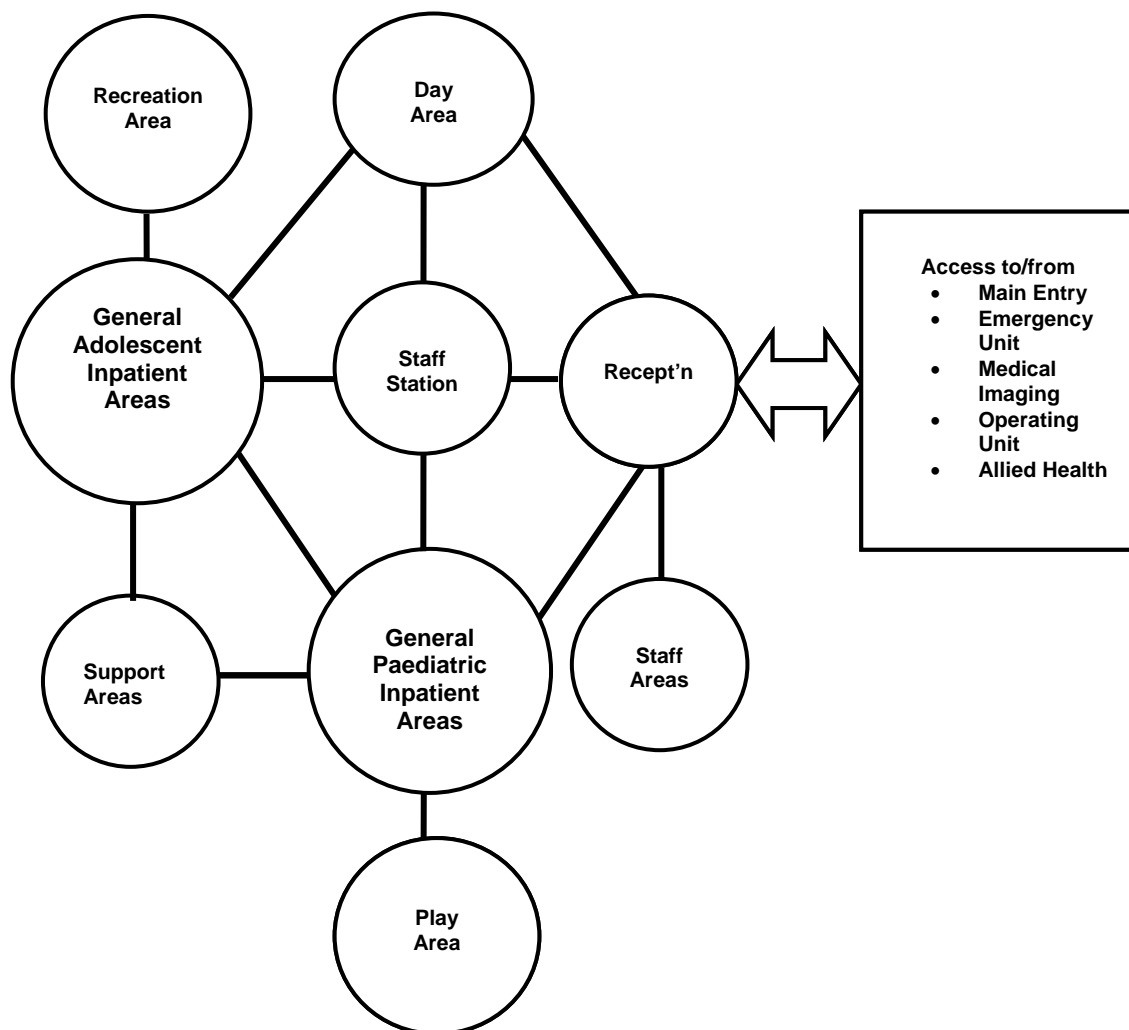
NSW Health Post Occupancy Evaluation Program 2 – Paediatric Units, February 2005

Maud Meates. "Ambulatory Paediatrics – Making A Difference", Archives of Disease in Childhood 1997, 76:468-476.

## Part B - Health Facility Briefing and Planning

### FUNCTIONAL RELATIONSHIP DIAGRAM –PAEDIATRIC AND ADOLESCENT UNIT

The following diagram sets out the relationships between zones in a Paediatric and Adolescent Unit:



### SECURITY ISSUES TO BE CONSIDERED IN PAEDIATRIC AND ADOLESCENT UNIT

GENERIC SAFETY AND/OR SECURITY RISKS	POTENTIAL SOLUTIONS
1. Entry by all relevant personnel visiting or working within the Hospital.	<ol style="list-style-type: none"> <li>1. CCTV monitoring of Ward entry and exit doorways.</li> <li>2. After hours remote switch and intercom on entry doors.</li> <li>3. Use of reed switches on all external doors and entries. Swipe card readers may be required to both sides of internal doors, to allow access for authorized staff.</li> </ol>

SPECIFIC SAFETY AND/OR SECURITY RISKS	POTENTIAL SOLUTIONS
1. Relatives / Visitors	<ol style="list-style-type: none"> <li>1. Good visibility from staff station to ward.</li> <li>2. Manage relatives/visitors admittance in the area by restricting visiting hours and/or number of visitors.</li> </ol>
2. Furniture fittings and equipment including Computers, Office and Medical Equipment	<ol style="list-style-type: none"> <li>1. Non-removable 'Asset No.' on all equipment above a predetermined value.</li> <li>2. Keep equipment in lockable area.</li> </ol>
3. Hospital personnel safety	<ol style="list-style-type: none"> <li>1. Staff working in this area to have knowledge of where the fixed duress system is located and/or use a mobile duress pendant.</li> <li>2. Design shape of interview rooms and location of desks, etc, in such a way that minimises risk to health personnel.</li> <li>3. Provide storage and store items not in constant use that could be used as weapons. (Operational Policy).</li> <li>4. Minimise furniture that can be used as a weapon, ie, picked up and thrown.</li> </ol>
4. Staff personal effects	<ol style="list-style-type: none"> <li>1. Provision for lockers in staff areas and lockable desk drawer to keep small personal effects.</li> </ol>
5. Drugs storage	<ol style="list-style-type: none"> <li>1. Drugs safe to be located in area that can be monitored by staff.</li> </ol>

## Part B - Health Facility Briefing and Planning

### SECURITY CHECKLIST – PAEDIATRIC AND ADOLESCENT UNIT

<b>FACILITY:</b>	<b>DEPARTMENT: Paediatric and Adolescent Unit</b>	
<b>RISK ISSUE</b>	<b>DESIGN RESPONSE</b>	
1. How is 'after hours' access provided for patients and how is this access point monitored?		
2. Do staff have access to both fixed and mobile duress systems?		
3. Is access to patient records restricted to staff entitled to that access?		
4. Is a system implemented to prevent theft of equipment, files, personal possessions, etc ?		
5. Are drug safes installed in accordance with current regulations?		
6. How is after hours access provided for staff?		
7. How are the offices secured during and after hours?		
8. Are there lockable storage areas available for specialised equipment?		
9. Is lockable furniture provided for storage of staff personal effects?		
10. What system has been implemented to prevent the illegal removal of children?		
11. Are interview rooms appropriately designed with specific reference to staff egress, furniture selection, furniture location, provision for storage of equipment, etc.		
12. What surveillance/monitoring system will be implemented to monitor access to rooms/wards?		
<b>DESIGN COMMENTARY /NOTES</b>	<b>DESIGN SIGN-OFF</b>	
	Name: .....	
	Position: .....	
	Signature: .....	
	Date: .....	
	Name: .....	
	Position: .....	
	Signature: .....	
	Date: .....	
	Name: .....	
	Position: .....	
	Signature: .....	
	Date: .....	